

What is the TMaH Model?

TMaH will support participating state Medicaid agencies in developing a whole-person approach to pregnancy, childbirth, and postpartum care.

Model Structure

- ✓ Provides technical assistance and resources to up to 15 state Medicaid agencies
- ✓ Improves access to an expanded and inclusive maternal health care workforce
- ✓ Focuses on pregnant and postpartum women with Medicaid and Children’s Health Insurance Program (CHIP) coverage



Model Goals

- Improve experience of care for pregnant and post partum mothers
- Reduce avoidable adverse outcomes, such as severe maternal morbidity and mortality
- Increase access to midwifery and doula services

Who can participate?

Medicaid agencies in the 50 states, D.C., and U.S. territories are eligible to apply. The model includes three years of technical assistance during the Pre-Implementation Period to prepare participants for model implementation. CMS will issue awards for up to fifteen states.



State Medicaid Agencies (SMAs)

SMAs are the only eligible applicants. Each selected SMAs will be eligible to receive up to \$17 million in funding to support model implementation over the course of 10 years. States must implement certain elements of the model in a substate or statewide region.



Managed Care Entities (MCEs)

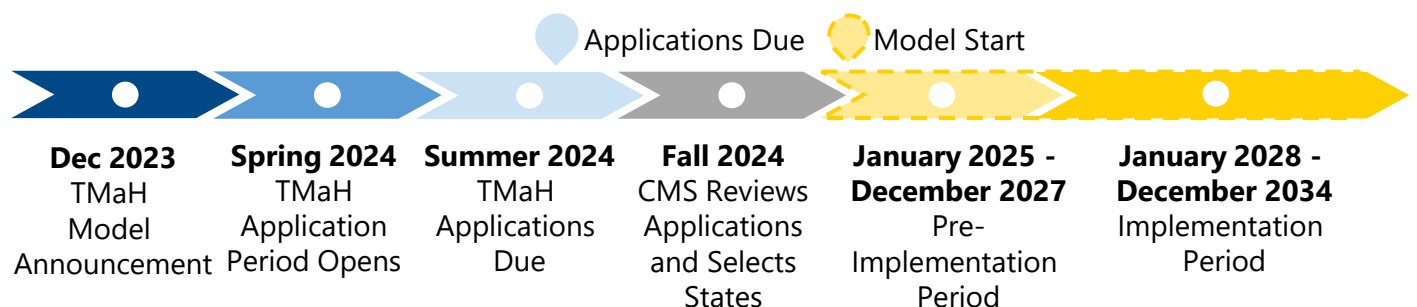
Participating MCEs in selected states will collaborate with SMAs to create and implement a plan to participate.



Maternity Care Providers and Supports

Health systems, hospitals, birth centers, health centers, maternity care providers, maternal quality advocacy organizations, and community-based organizations are invited to coordinate with SMAs and MCEs to participate.

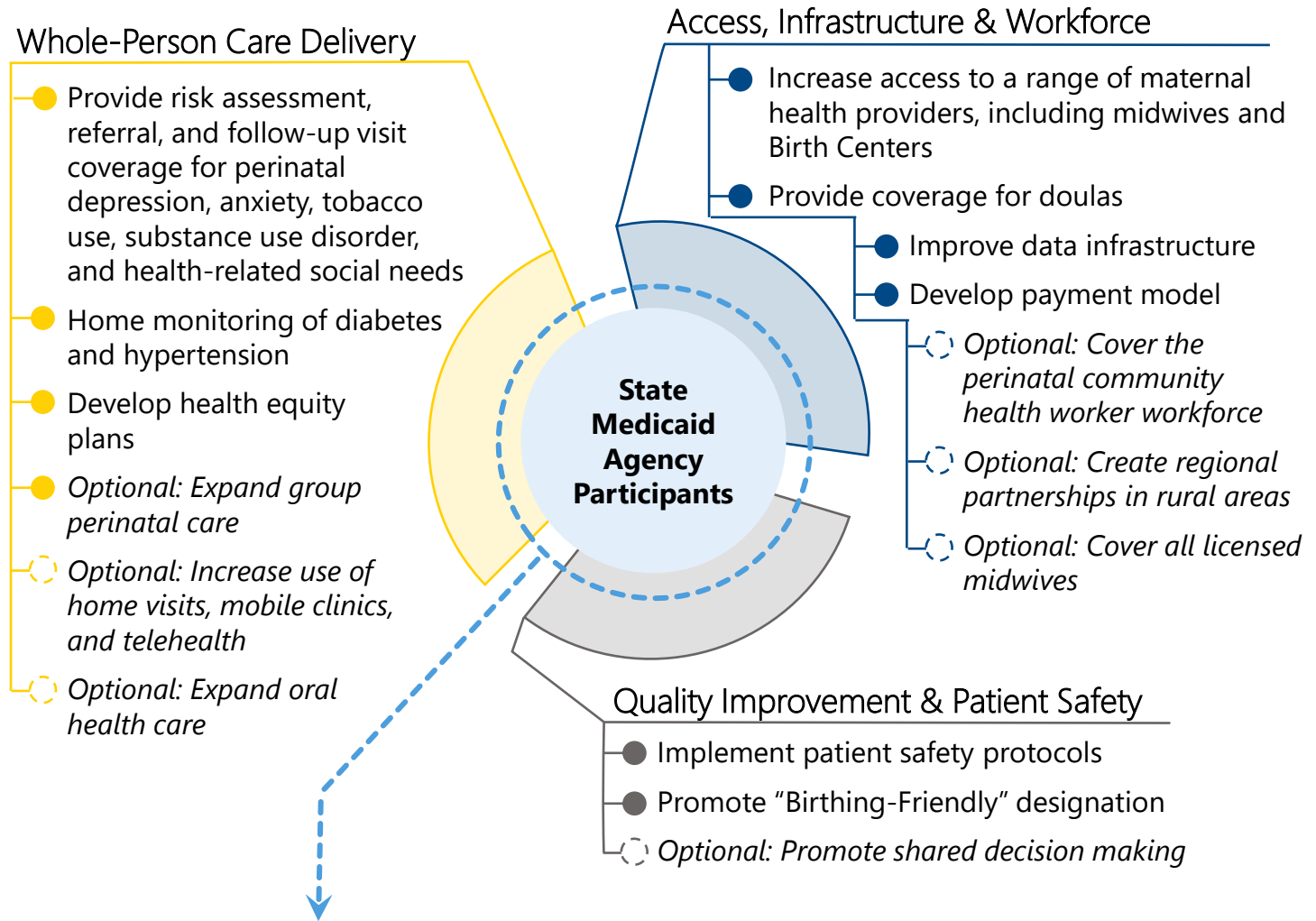
When do SMAs need to apply?



If you are interested in learning about TMaH Model events and resources as they are announced, sign up for the listserv at <https://public.govdelivery.com/accounts/USCMS/subscriber/topics> to receive email updates about the model.

Care Delivery Transformations

The TMaH Model will support SMAs as they implement policy and build their provider capabilities to transform the maternal health care experience under three key areas.



How the Model Supports Health Equity

TMaH is designed to support state Medicaid agencies and providers – as they implement infrastructure and workflows that meet patient needs.



Health Equity Plans. CMS will work with SMAs, managed care organizations, community-based organizations (CBOs) and providers to support review of available data and track progress toward health equity goals.



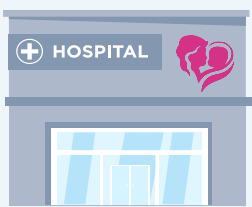
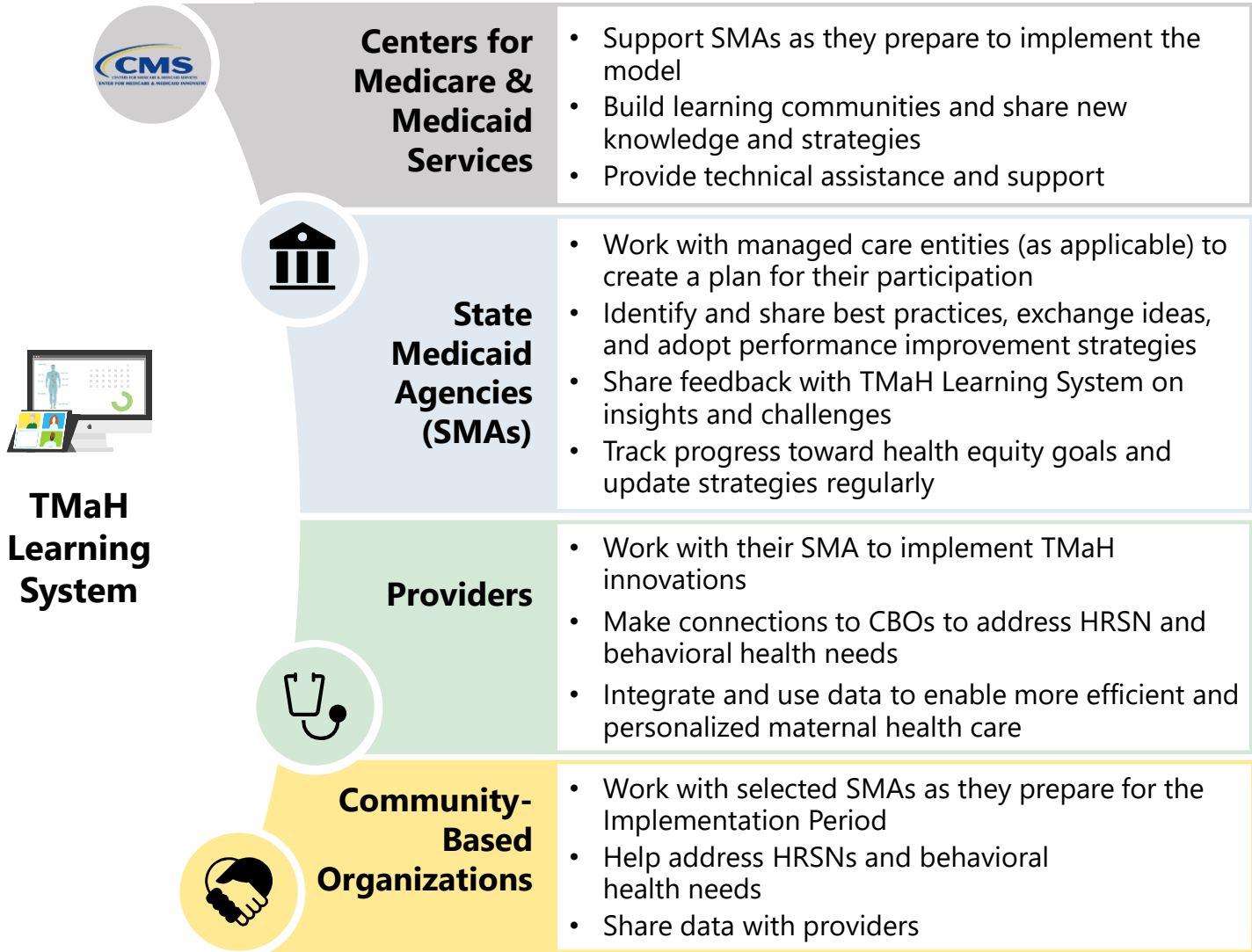
Health Related Social Needs (HRSN) Data Collection and Screening. CMS will work with state participants to develop data infrastructure to support collection of HRSN data and referral to resources.



Patient Safety Improvement. TMaH will provide a learning platform for all participants to share insights on workflows and practices that have demonstrated safer patient outcomes.

Learning System Strategy

CMS will design, implement, and manage a **learning system strategy** that supports SMAs, and their MCE and provider partners in sharing insights and information as they implement requirements and prepare for the Implementation Period.



More information on TMaH's care delivery transformations will be shared in TMaH's Overview Webinar event scheduled for early 2024. Subscribe to the TMaH Model listserv <https://public.govdelivery.com/accounts/USCMS/subscriber/topics> to stay tuned for model announcements, such as this event.

Additional Information on TMaH Website:
<https://www.cms.gov/priorities/innovation/innovation-models/transforming-maternal-health-model>

Help Desk: TMAHModel@cms.hhs.gov

Subscribe to the TMaH Model Listserv <https://public.govdelivery.com/accounts/USCMS/subscriber/topics> for updates, including event announcements and additional resources.