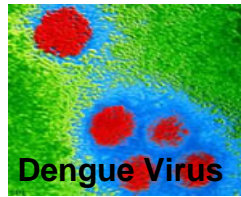


Leptospirosis



Salmonellosis



Dengue Virus



Neisseria Meningitidis

INFECTIOUS DISEASES



HAWAII STATE
DEPARTMENT
OF HEALTH

Unless *YOU* report, we won't know!
**Call 24 hours a day, 7 days a week,
365 days a year.**

Report all Diseases except Tuberculosis, Hansen's Disease, Sexually Transmitted Infections, and HIV/AIDS to the Health Department Office in Your County



O'ahu (808) 586-4586
Hilo (808) 933-0912
Kona (808) 322-4877
Kaua`i (808) 241-3563
Maui (808) 984-8213

After hours: (808) 566-5049
After hours: (800) 360-2575
After hours: (800) 360-2575
After hours: (800) 360-2575
After hours: (800) 360-2575

DISEASES REPORTABLE TO THE HAWAII DEPARTMENT OF HEALTH



STATUTORY REPORTING REQUIREMENTS FOR PHYSICIANS AND LABORATORIES

HAR, Title 11. Chapter 156, Communicable Diseases, Exhibits A, B & C. These rules, along with specific disease isolation and control recommendations by the Department of Health, can be found on the HDOH Website at:

<http://gen.doh.hawaii.gov/sites/har/admrules/default.aspx>.



HAWAII STATE
DEPARTMENT
OF HEALTH

WHAT INFORMATION AM I REQUIRED TO PROVIDE?

Hawaii State Law (§321-29). If requested, every person, organization, association, healthcare provider, medical facility, or any other possible source of information shall provide any or all of the following information about a person with a disease under investigation: patient name, names of minor's parents or guardians, address, telephone number, age, sex, race or ethnicity, clinical signs and symptoms, lab results, interview findings.

WHAT ABOUT HIPAA?

Federal HIPAA "Privacy Rule" (Health Information Portability Accountability Act 45 CFR section 164.512(b)). All healthcare providers, health plans, and clearinghouses are permitted to disclose protected health information without individual authorization for the reporting of disease, injury, and vital events; and conducting public health surveillance, investigations and intervention to the health department.

The list of reportable conditions by reporting category appear inside.

DISEASES REPORTABLE TO THE HAWAII DEPARTMENT OF HEALTH



URGENT

Report by telephone as soon as a provisional diagnosis is established. Follow by a written report submitted by mail or fax within 3 days to the appropriate program.

Agent	Report Type	Report to
Anthrax		Disease Investigation Branch
Botulism, Foodborne		Disease Investigation Branch
Brucellosis		Disease Investigation Branch
Cholera		Disease Investigation Branch
Congenital Rubella Syndrome		Disease Investigation Branch
Dengue		Disease Investigation Branch
Diphtheria		Disease Investigation Branch
Encephalitis, Meningitis, Arboviral (Alpha viruses [e.g., California Serogroup, Eastern equine, Western equine, Venezuelan equine, Chikungunya virus disease], Flavivirus [Powassan, West Nile, Japanese encephalitis])		Disease Investigation Branch
Fish poisoning (ciguatera, scombroid, or hallucinogenic)		Disease Investigation Branch
Foodborne illness: 2 or more ill persons having eaten: (a) a common food, or (b) at a place in common.		Disease Investigation Branch
Glanders		Disease Investigation Branch
Haemophilus influenzae serotype b (meningitis, bacteremia, epiglottitis, pneumonia, or isolation from a normally sterile site)		Disease Investigation Branch
Hantavirus Disease		Disease Investigation Branch
Hepatitis A - Also report liver function tests (AST, ALT) conducted at the same time for all patients who are HAV IgM positive.		Disease Investigation Branch
Influenza (Laboratory confirmed cases and outbreaks)		Disease Investigation Branch
Legionellosis		Disease Investigation Branch
Measles (rubeola)		Disease Investigation Branch
Melioidosis		Disease Investigation Branch
Meningococcal Disease (meningitis, meningococcemia, or isolation from a normally sterile site)		Disease Investigation Branch
Pertussis		Disease Investigation Branch
Plague		Disease Investigation Branch
Poliomyelitis		Disease Investigation Branch
Psittacosis		Disease Investigation Branch
Q fever		Disease Investigation Branch
Rabies		Disease Investigation Branch
Rubella (German Measles)		Disease Investigation Branch
SARS (Severe Acute Respiratory Syndrome)		Disease Investigation Branch
Smallpox		Disease Investigation Branch
Tuberculosis		TB Control Program
Tularemia		Disease Investigation Branch
Typhoid Fever		Disease Investigation Branch
Vancomycin-resistant, Staphylococcus aureus (VRSA)		Disease Investigation Branch
Viral hemorrhagic fevers (Filoviruses [e.g., Ebola, Marburg], and Arena viruses [e.g., Lassa, Machupo])		Disease Investigation Branch
West Nile Virus Fever		Disease Investigation Branch
Yellow Fever		Disease Investigation Branch

URGENT

DISEASES REPORTABLE TO THE HAWAII DEPARTMENT OF HEALTH



ROUTINE, ROUTINE/ENTERIC

Routine: report by mail, telephone, or fax to the Disease Outbreak Control Division on Oahu, or to the District Health Offices on the neighbor islands.

Routine/Enteric: report by telephone as soon as a working diagnosis is established if the individual case is a *food handler, direct care provider, or pre-school aged child*.

Agent	Report Type	Report to
Amebiasis	Routine/Enteric	Disease Investigation Branch
Botulism, wound or infant	Routine	Disease Investigation Branch
Campylobacteriosis	Routine/Enteric	Disease Investigation Branch
Chickenpox - varicella (report individual cases)	Routine	Disease Investigation Branch
Cryptosporidiosis	Routine/Enteric	Disease Investigation Branch
Cyclosporiasis	Routine	Disease Investigation Branch
Enterococcus, Vancomycin-resistant	Routine	Disease Investigation Branch
<i>Escherichia coli</i> O157	Routine/Enteric	Disease Investigation Branch
Filariasis	Routine	Disease Investigation Branch
Giardiasis	Routine/Enteric	Disease Investigation Branch
Hemolytic uremic syndrome (HUS)	Routine/Enteric	Disease Investigation Branch
Hemorrhagic colitis due to <i>E. coli</i> , any strain or serotype	Routine/Enteric	Disease Investigation Branch
Hepatitis B (acute and chronic)- Also report liver function tests (AST, ALT) conducted at the same time for all patients who are HBsAg positive.	Routine	Disease Investigation Branch
Hepatitis C (acute)- Also report liver function tests (AST, ALT) conducted at the same time for all patients who are anti-HCV positive.	Routine	Disease Investigation Branch
Hepatitis E - Also report liver function tests (AST, ALT) conducted at the same time for all patients who are anti-HCV positive.	Routine	Disease Investigation Branch
Influenza virus (Report positive, negative and indeterminate results, and other viral isolates obtained through respiratory culture)	Routine	Disease Investigation Branch
Leptospirosis	Routine	Disease Investigation Branch
Listeriosis	Routine/Enteric	Disease Investigation Branch
Malaria	Routine	Disease Investigation Branch
Mumps	Routine	Disease Investigation Branch
Norovirus (NoV) (Report laboratory confirmed cases and outbreaks)	Routine/Enteric	Disease Investigation Branch
Pneumococcal disease (meningitis, bacteremia, or isolation from a normally sterile site)	Routine	Disease Investigation Branch
Respiratory Syncytial Virus (RSV) {report positive and negative results, and other viral isolates obtained through respiratory culture}	Routine	Disease Investigation Branch
Salmonellosis (other than typhoid)	Routine/Enteric	Disease Investigation Branch
Shigellosis	Routine/Enteric	Disease Investigation Branch
Staphylococcus aureus, Methicillin-Resistant (MRSA) (for laboratories)	Routine	Disease Investigation Branch
Staphylococcus aureus, Vancomycin-intermediate (VISA)	Routine	Disease Investigation Branch
Streptococcal disease, Group A (beta hemolytic, invasive disease including Streptococcal Toxic Shock Syndrome, necrotizing fasciitis, or isolation from a normally sterile site, but not including pharyngitis)	Routine	Disease Investigation Branch

Tetanus	Routine	Disease Investigation Branch
Toxoplasmosis	Routine	Disease Investigation Branch
Trichinosis	Routine	Disease Investigation Branch
Typhus (louse, flea, mite-borne)	Routine	Disease Investigation Branch
Vibriosis (other than <i>cholera</i>)	Routine/Enteric	Disease Investigation Branch
Yersiniosis (other than plague)	Routine/Enteric	Disease Investigation Branch

THIS SECTION INTENTIONALLY LEFT BLANK

DISEASES REPORTABLE TO THE HAWAII DEPARTMENT OF HEALTH



Upon Request Only

Agent	Report Type	Report to
Angiostrongyliasis	Upon request	Disease Investigation Branch
Hepatitis C (Chronic)- Also report liver function tests (AST, ALT) conducted at the same time for all patients who are anti-HCV positive.	Upon request	Disease Investigation Branch
Influenza-like illness	Upon request	Disease Investigation Branch
MRSA (Methicillin-Resistant <i>Staphylococcus aureus</i>)(for physicians)	Upon request	Disease Investigation Branch

Confidential

Agent	Report Type	Report to
Acquired Immunodeficiency Syndrome (CDC Case Definition)	Confidential	AIDS Surveillance Program
Chlamydia (<i>Chlamydia trachomatis</i>)	Confidential	STD Prevention Program
Gonococcal disease (<i>Neisseria gonorrhoeae</i>)	Confidential	STD Prevention Program
Hansen's disease	Confidential	Hansen's Disease Community Program
HIV (Human Immunodeficiency Virus)	Confidential	AIDS Surveillance Program
Pelvic Inflammatory Disease (PID)	Confidential	STD Prevention Program
Syphilis	Confidential	STD Prevention Program

Report all Diseases except Tuberculosis, Hansen's Disease, Sexually Transmitted Infections, and HIV/AIDS to the Health Department Office in Your County

Oahu

PO Box 3378, Honolulu, HI 96801
Telephone: ☎ (808) 586-4586, Facsimile: (808) 586-4595

Hawaii

PO Box 916, Hilo, HI 96720
Telephone: ☎ (808) 933-0912, Facsimile: (808) 933-0400

Maui

54 High Street, Wailuku, HI 96793
Telephone: ☎ (808)984-8213, Facsimile: (808) 243-5141

Kauai

3040 Umi Street, Lihue, HI 96766
Telephone: ☎ (808) 241-3563, Facsimile: (808) 241-3480

STD Prevention Program

3627 Kilauea Avenue, Rm. 304, Honolulu, HI 96816
Telephone: ☎ (808) 733-9281, Facsimile (808) 733-9291

HIV/AIDS Surveillance Program (CONFIDENTIAL)

3627 Kilauea Avenue, Rm. 306, Honolulu, HI 96816
Telephone: ☎ (808) 733-9010

Hansen's Disease Community Program

3650 Maunalei Avenue, Honolulu, HI 96816
Telephone: ☎ (808) 733-9831

Tuberculosis Control Program

by mail to TB Program, 1700 Lanakila Avenue, Honolulu HI 96817
Attn: Registry- CONFIDENTIAL Telephone: ☎ (808) 832-5731
Facsimile: (808) 832-5846 Attn: Registry- CONFIDENTIAL.
Please call for a copy of the TB report form.