



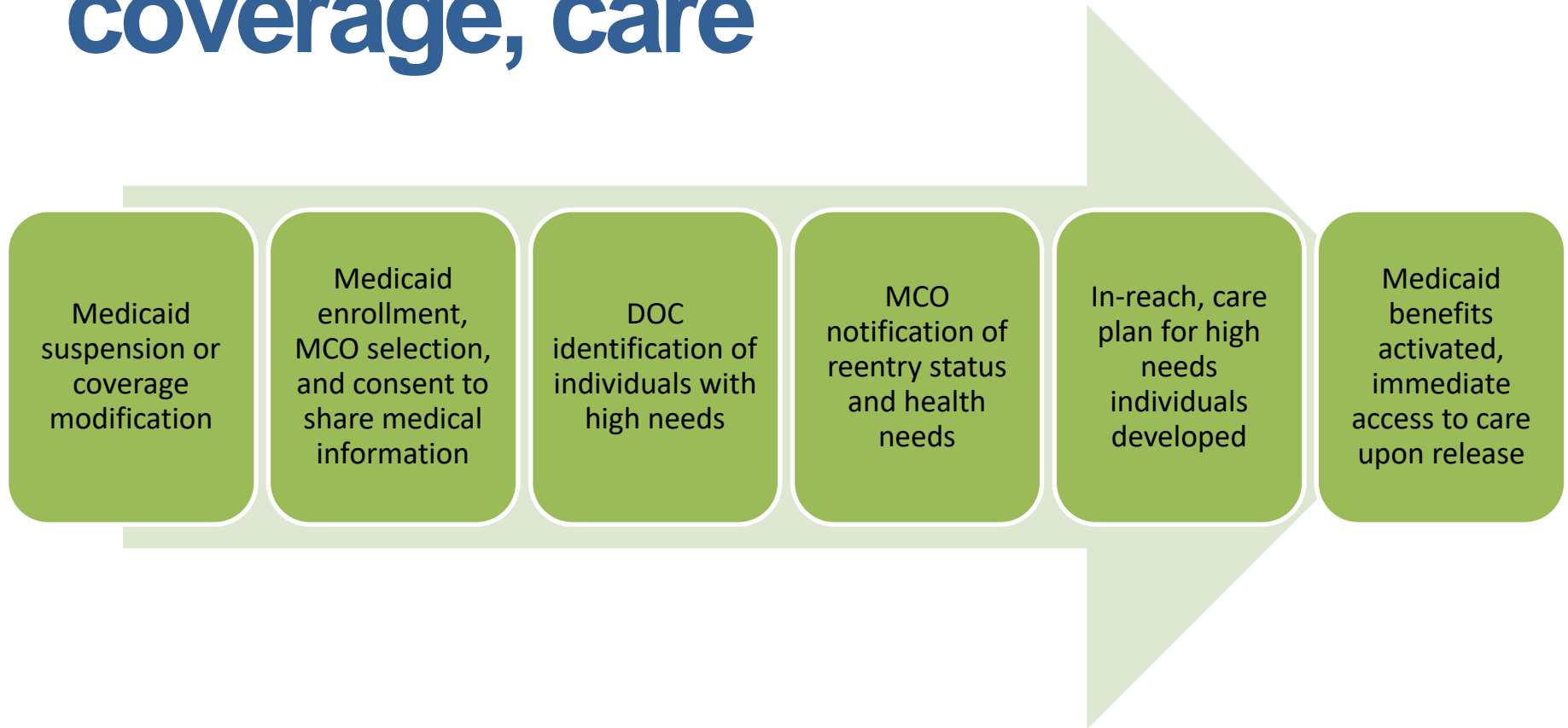
THE PEW CHARITABLE TRUSTS

# Select states' reentry processes from state prison

---

February 7, 2019

# A model for linkage to coverage, care



# Medicaid enrollment status upon incarceration

- Arizona – Suspends
- Louisiana – Suspends
- Ohio – Limits benefit to “in-patient stay only”

# Medicaid application timeline

## Arizona

- Begin 30 days pre-release

## Louisiana

- Begin 90 days to 9 months pre-release

## Ohio

- Begin 105 days pre-release

All three states complete enrollment pre-release

# Application assistance

Arizona: DOC staff

- Corrections Assistors

Louisiana: DOC staff

- Transition Specialists/Social Workers

Ohio: Peers

- Trained individuals serving life sentences

# Defining “high needs”

- Arizona: Chronic physical and/or behavioral diagnoses or other complex care needs
- Louisiana: SMI, co-occurring SUD, HIV, pregnancy, multiple chronic conditions, others as deemed necessary
- Ohio: Two of the following: mental illness, SUD, chronic condition OR HIV+, Hepatitis C, or pregnancy

# Information sharing

## Arizona

- Electronic data exchange among DOC, Medicaid & most jails regarding entry and release

## Louisiana

- Limited health data sent to selected MCO via secure connection

## Ohio

- Limited health data sent to selected MCO via secure connection

# Care coordination for high need individuals

## Arizona:

- Each MCO must have a designated justice liaison to assist jail and prison representatives.
- MCOs are contractually obliged to “reach in” to identified reentrants with high health care needs. Care appointment must occur within 7 days of member’s release.



# Arizona: co-located integrated health care clinics

- Twelve clinics located in probation/parole offices offer physical/behavioral integrated care to criminal justice population.
- Services include MAT, screening for employment, housing, food assistance.

# Care coordination for high need individuals

## Louisiana:

- MCO must do at least one pre-release contact. Must establish referrals including next naltrexone injection if appropriate.
- High need designation lasts at least until annual renewal.
- Medicaid pays higher capitation rate for high need enrollees.

# Care coordination for high need individuals

## Ohio:

- 30-60 days prior to release: DOC screens for qualifying individuals. MCP care manager assigned, develops transition plan.
- 7-14 days prior: Care manager and individual review transition plan via teleconference.
- Medicaid does not pay higher rate for high need enrollees.

# Thank you

## Questions?

Maria Schiff

202-540-6822

[mschiff@pewtrusts.org](mailto:mschiff@pewtrusts.org)