

Strengthening the Capacity of Local Health Department (LHD) Immunization Programs

National Vaccine Advisory Committee Meeting
Washington, DC
September 12 -13, 2018

Tiffany Tate, MHS
NACCHO NVAC Liaison

NACCHO
National Association of County & City Health Officials

NACCHO Immunization Program

Recent Highlights



- ✔ Snapshot: 2017 National Assessment of LHD Immunization Programs
- ✔ Addressing LHDs HPV vaccination efforts
- ✔ 2018-2019 NACCHO Immunization Advisory Group
- ✔ NACCHO observes National Immunization Awareness Month

2017 National Assessment of LHD Immunization Programs

Objective: The 2016 NACCHO Profile indicated that 90% of LHDs provide adult immunization services and 88% provide childhood immunization services. Immunizations are the clinical service most often provided within LHD clinical programs. To further examine the functions of immunization programs at the LHD level, NACCHO conducted an assessment to better characterize LHD activities to control vaccine preventable diseases (VPD) and provide immunization services.

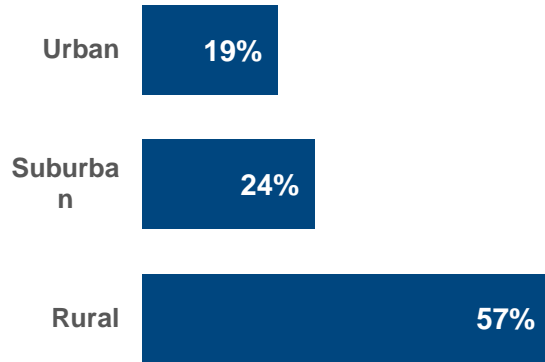
Mixed-Method assessment designed to capture local health department: infrastructure, funding, policies, health education and outreach, immunization services, VPD investigation, and the use of immunization information systems

Recruitment conducted with the voluntary support of the Association of Immunization Managers (AIM) and State Immunization Program Coordinators

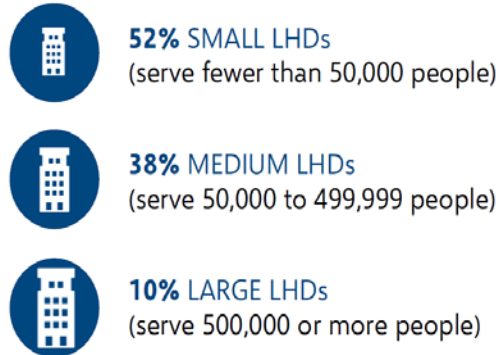
Assessment was emailed and in the field from October to November 2017; Analysis of 517 responses conducted using Excel and SPSS statistics software

Results: LHD Infrastructure

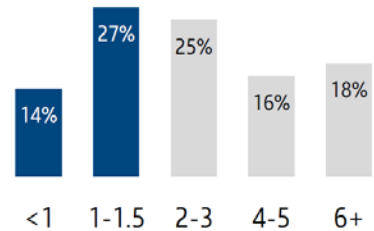
Geographic Area



LHD Respondent Demographics

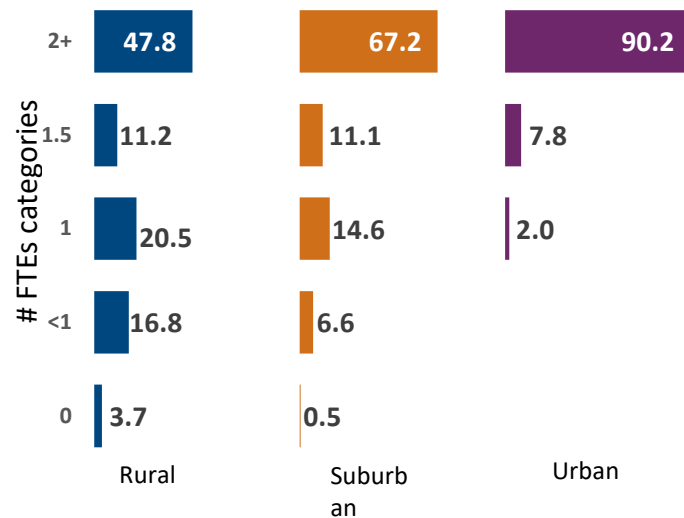


41% of respondents have fewer than 2 FTEs performing IZ activities. Since 2016, 25% reported a decrease in staffing, while only 7% reported an increase.

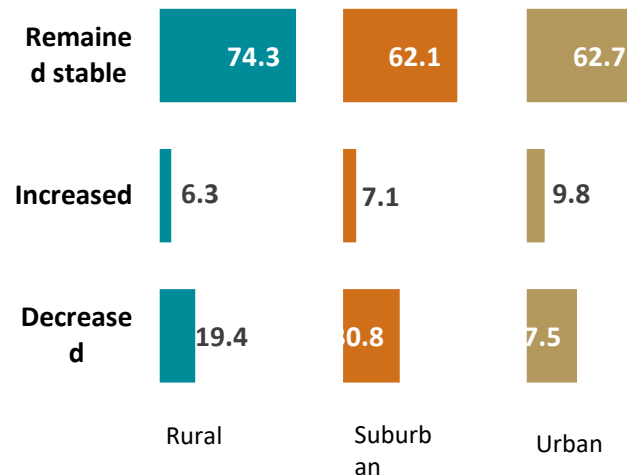


Results: LHD Staffing

FTEs that provide immunization services

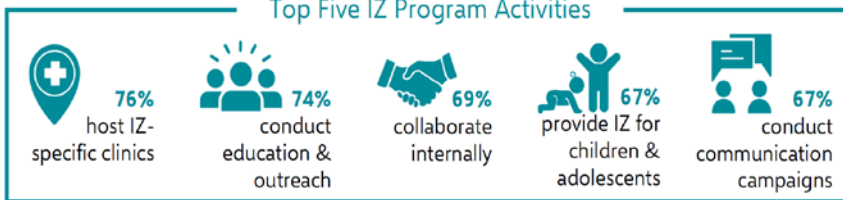


IZ staffing level changes compared to

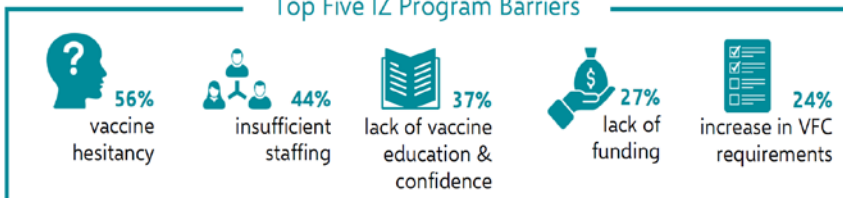


Results: LHD Activities & Challenges

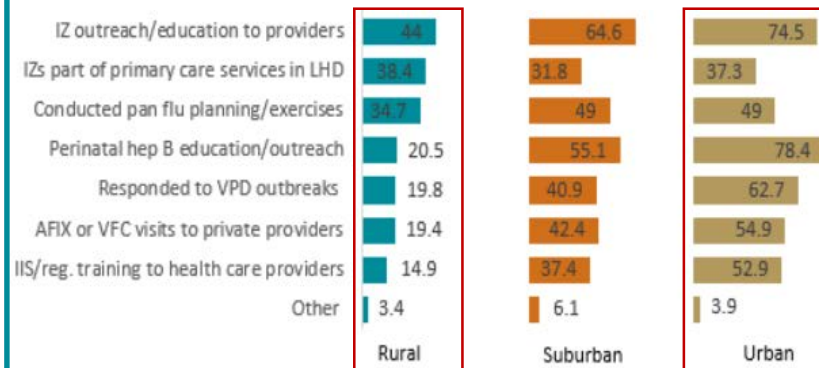
Top Five IZ Program Activities



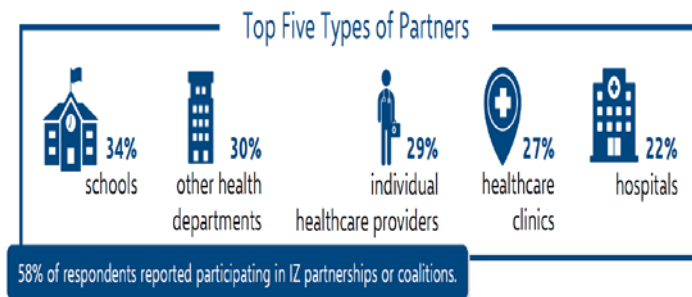
Top Five IZ Program Barriers



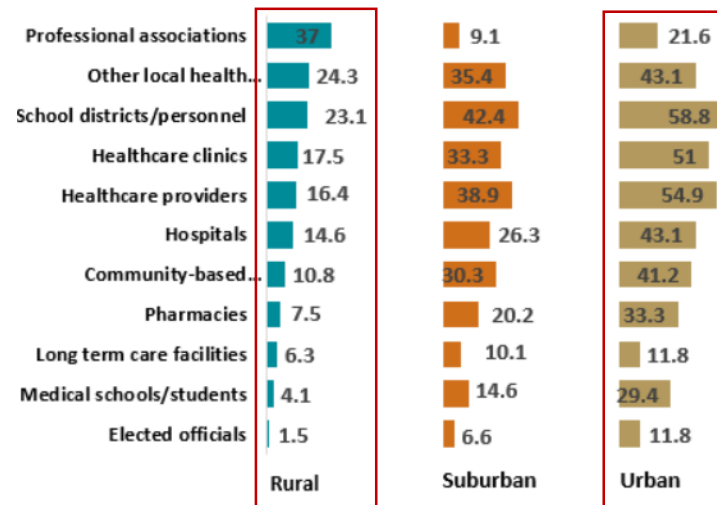
Key activity differences when stratified by location:



Results: LHD Partnerships

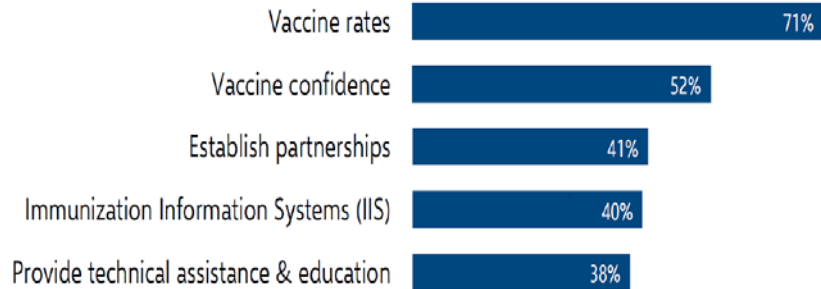


Key partnership differences when stratified by location:



Results: LHD Priorities and Billing






Top Priorities for LHD IZ Programs to Address



LHD IZ Program Billing Capability



NACCHO Recommendations

-  Increased funding to support IZ programs
-  Capacity building for LHDs to address barriers/challenges
-  Leveraging partnerships and exploring new and non-traditional partnerships
-  Improve data systems to enhance vaccine delivery
-  Further exploration of rural IZ programs

NACCHO Activities



NACCHO Rural Health Section - Webinar

- Thursday, September 6, 2018; 2:00- 3:00 PM EDT
- Featured Speaker: USDA's Anne C. Hazlett, Asst. to the Sec. for Rural Development



Activities to support LHD HPV vaccination efforts

- Continue to provide support to NACCHO HPV Demonstration Project sites
- Submitted comments to the NVAC HPV Implementation Workgroup



2018-2019 NACCHO Immunization Advisory Group

- New workgroup members as of July 2018
- Comprised of professionally and geographically diverse group of subject-matter experts from LHD immunization programs and related organizations



National Immunization Awareness Month



NACCHO Immunization Staff



Lilly Kan, MPH

Senior Director, Infectious Disease & Informatics

Phone: (202) 507-4238

E-mail: lkan@naccho.org

Kimberly Scott, MPH

Senior Program Analyst, Immunization

Phone: (202) 595-1123

E-mail: ksharpe-scott@naccho.org

Michelle Cantu, MPH

Director, Infectious Disease & Immunization

Phone: (202) 507-4251

E-mail: mcantu@naccho.org

Kerry Premo, MPH

Program Analyst, Immunization

Phone: (202) 507-4268

E-mail: kpremo@naccho.org