

Compartment: Manure

James M. Tiedje, Center for Microbial Ecology
Departments of Microbiology and Molecular Genetics
and of Plant, Soil & Microbial Sciences

Michigan State University

PACCARB Meeting
June 22, 2016

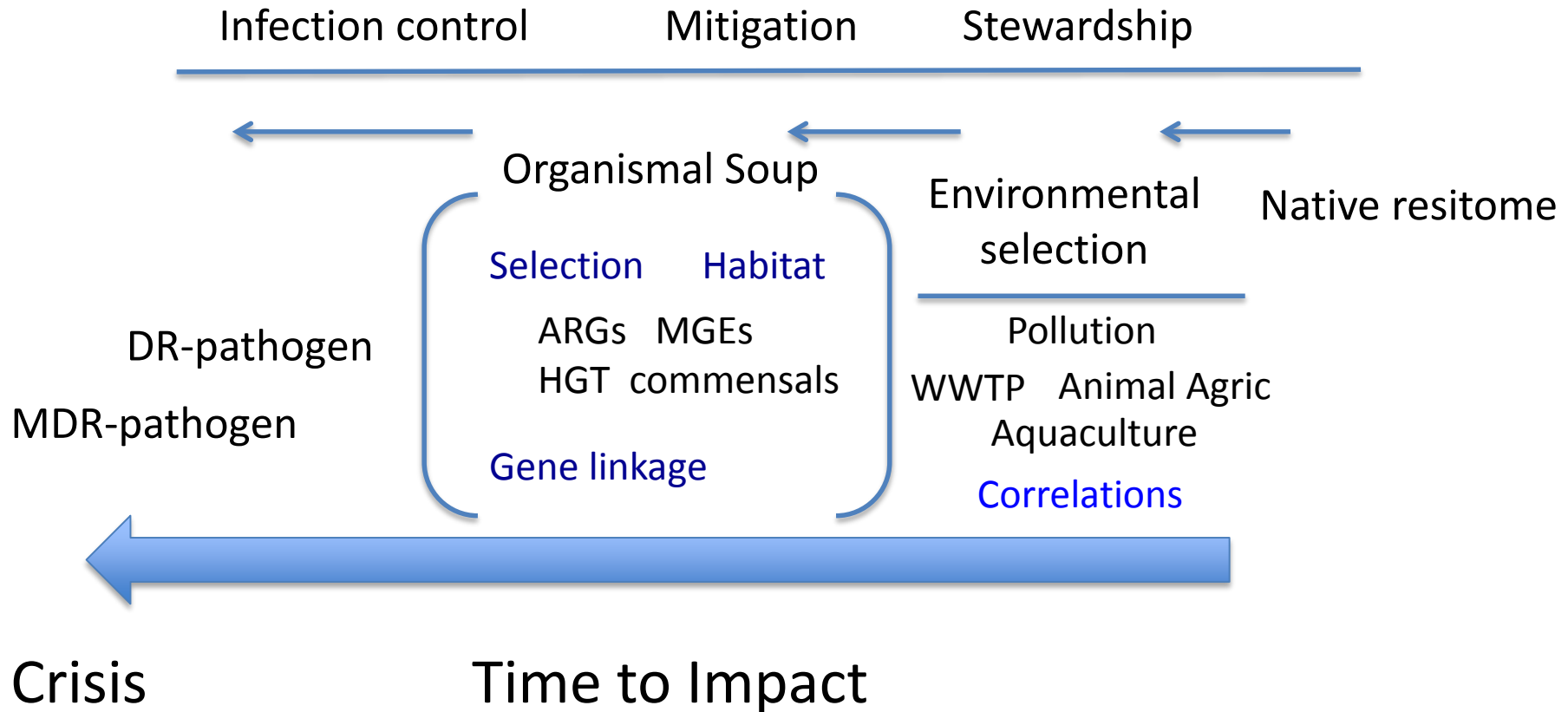


MICHIGAN STATE
UNIVERSITY

Focal Questions

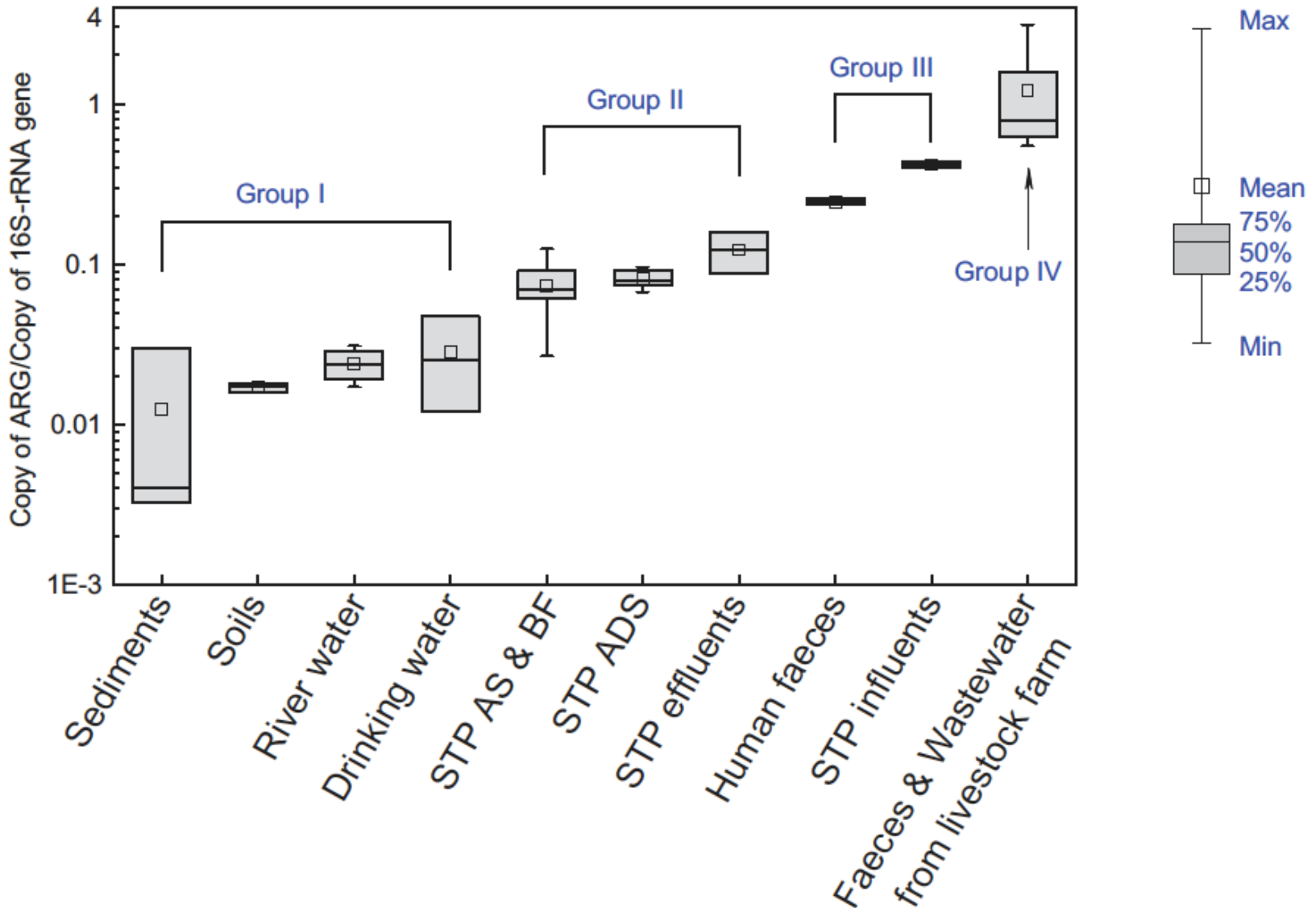
1. How should this topic be addressed by CARB/NAP in the future?
 - Quantitative risk assessment model
2. What is the connection to potential human health impacts?
 - High concentration point source
 - Favorable environment for HGT
 - Potential selective growth
3. Prioritize the gaps that need to be addressed to establish the connection to human health?
 - See last slide

Stages on the continuum to crisis



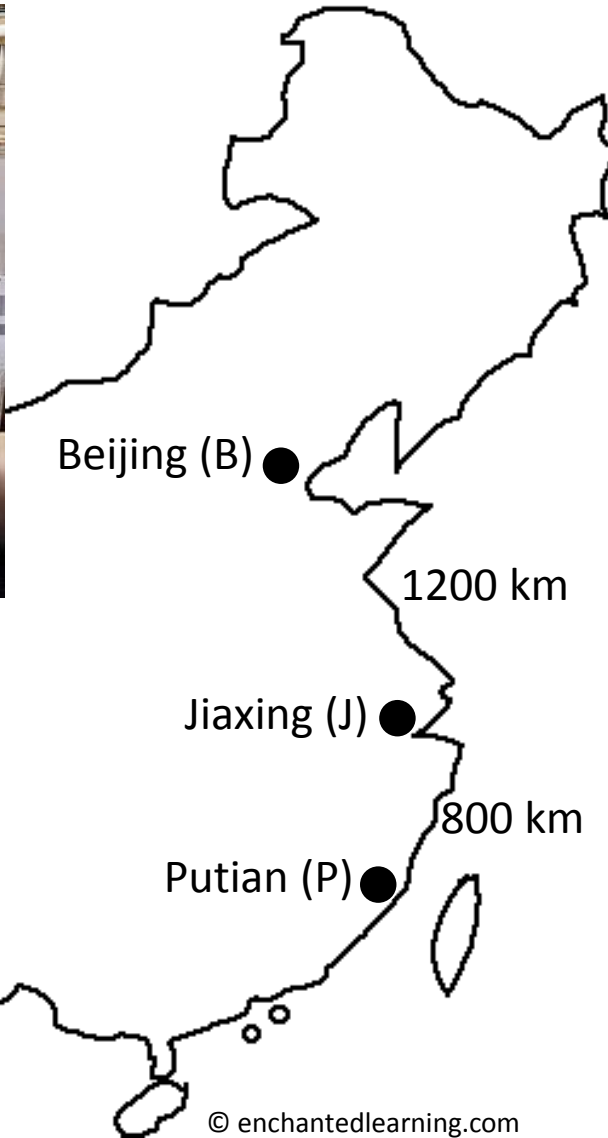
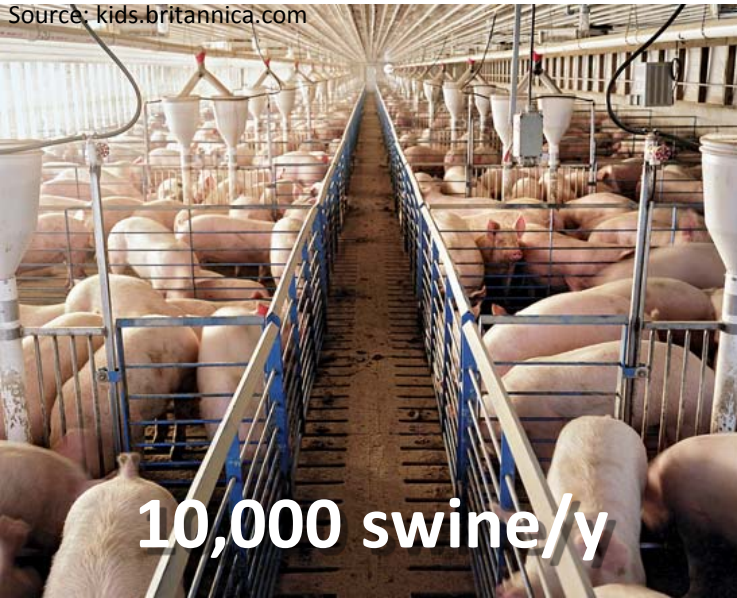
ARG Abundances in MetaGs of Different Environments

Bing Li, Ying Yang...Tiedje, Tong Zhang, ISMEJ (2015)



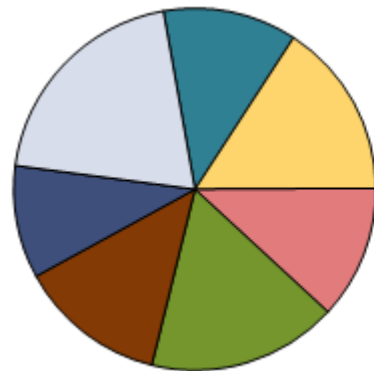
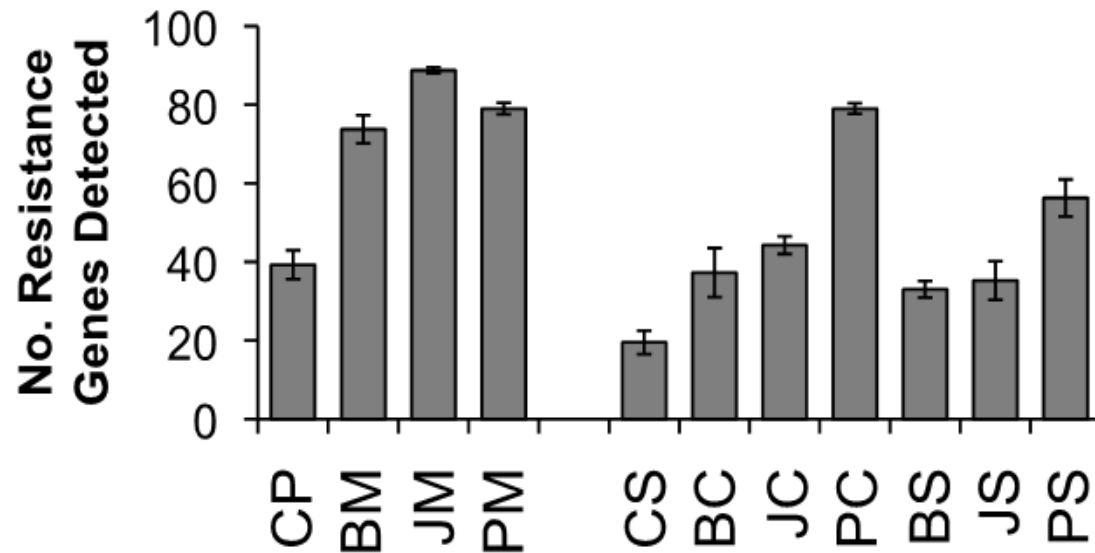
ARGs on Chinese swine farms

Source: kids.britannica.com



Zhu, Johnson, Tiedje
et al. PNAS, 2013

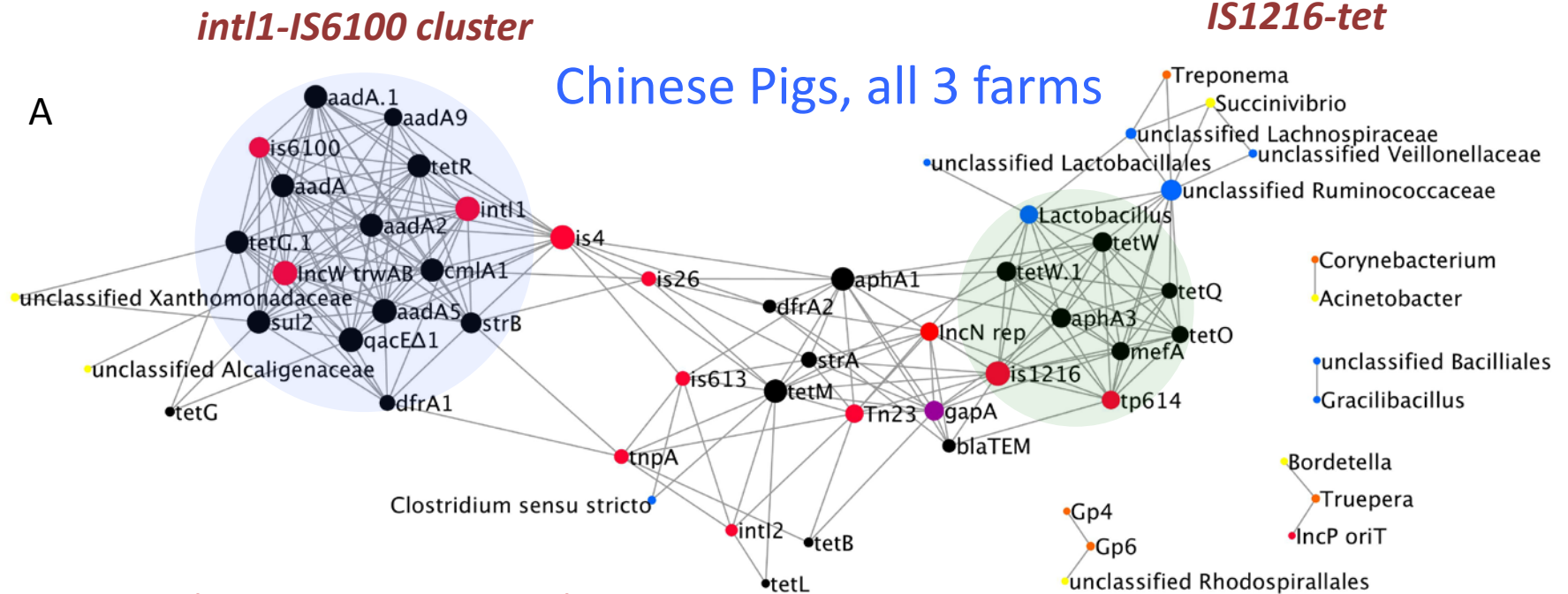
Nearly 100 resistance genes detected



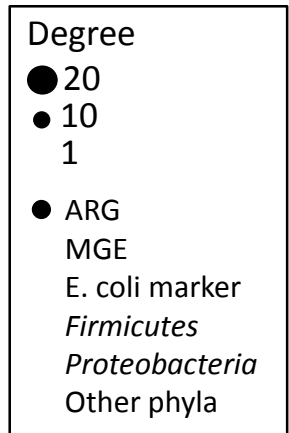
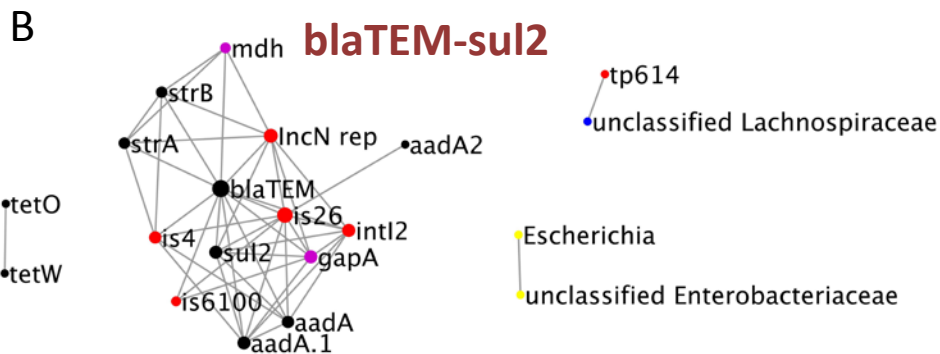
- Aminoglycoside
- Beta Lactam
- Quinolones, amphenicols
- Macrolide, lincosamide, streptogramin
- Tetracycline
- Vancomycin
- Other/ efflux

Zhu, Johnson, Tiedje
et al. PNAS, 2013

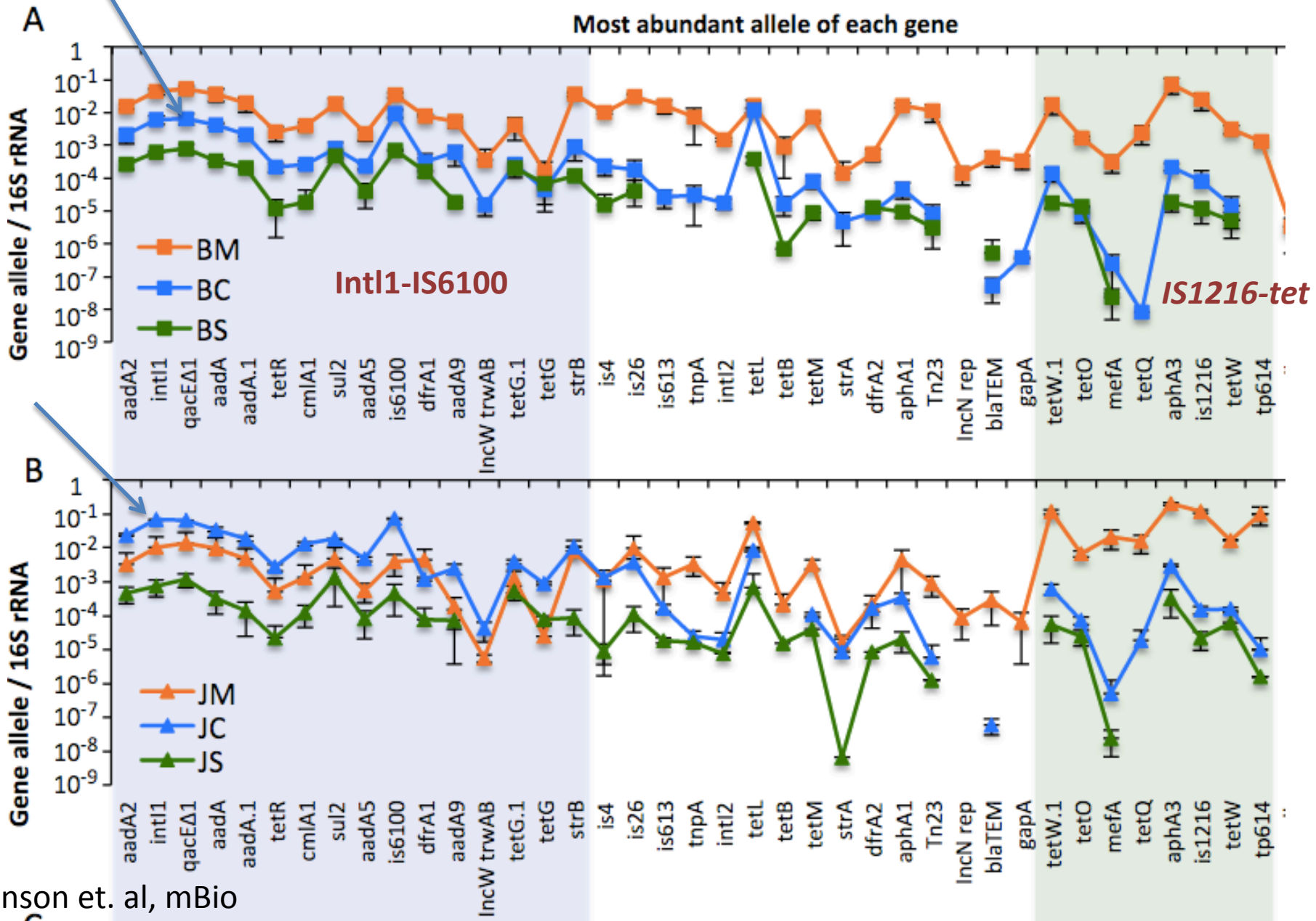
Clusters of identical sequences



NADL (no AB exposure) Pigs



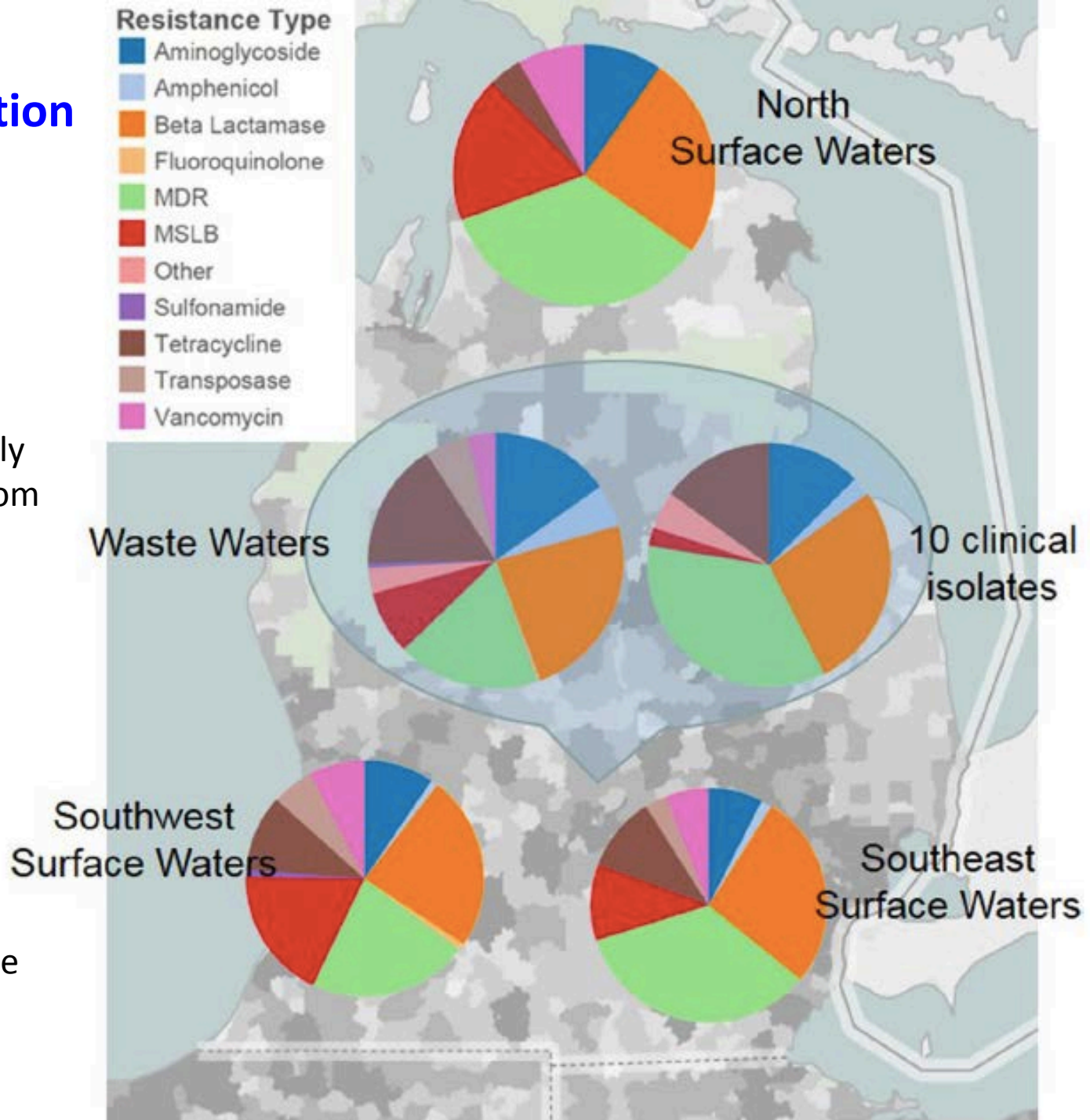
“Growth” of one cluster in compost in one Chinese farm



Need for integration of data from environments to the clinic

Gathers and geospatially maps ARGs and ARB from environments & clinic

Stedtfeld et.al. 2016
Antimicrobial resistance (AR) dashboard...
FEMS Microbiol Ecol



Prioritized Gaps - Manures

1. Fate and transport (ARGs, ARB as pollutants)
 - Survival rates, conditions, compost (heat), other treatments
 - Growth: substrates, conditions, selection, co-selection (board), concentrations below MIC; manure microbial ecology
 - Transport: water (surface, leaching), workers, produce, dust/air; regulatory tweaks?
2. HGT (GMO [microbes] experience)
 - Clusters: ARG, MGE, microbe; geographic range
 - ARG, MGE gene linkages, mechanisms, host range for HGT
 - Commensal host ecology
3. Data bases and nomenclature
 - Getting beyond the isolates
 - Efficient searching, communicating, recognizing the new
4. Data integration, mining, epidemiology
5. Quantitative risk assessment model