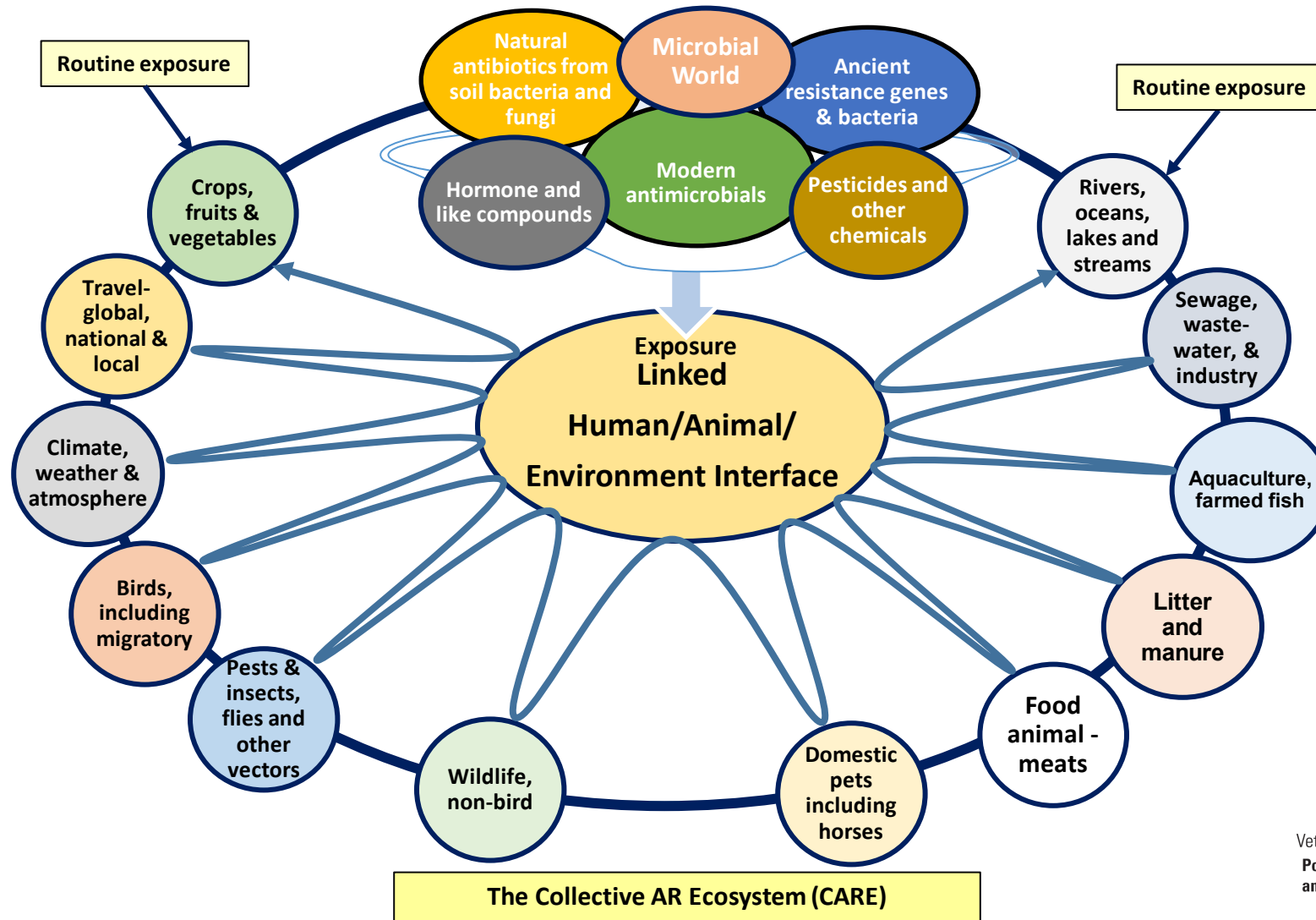


# The Collective Antibiotic Resistance Landscape through a One Health Lens

**Paula J. Fedorka-Cray, PhD and Shivaramu Keelara, DVM, PhD**

North Carolina State University, College of Veterinary Medicine  
Department of Population Health and Pathobiology,  
Raleigh, NC



# Artificial Intelligence

- To collect accurate insights, knowledge, and trends in antimicrobial resistance (AMR) and infectious diseases (ID) from data source
  - Publications, news media and available online data on AMR
- Building an integrated “ONE HEALTH” data base to analyze the “BIG DATA” of AMR and ID

# AMR App

## **Customized search engine**

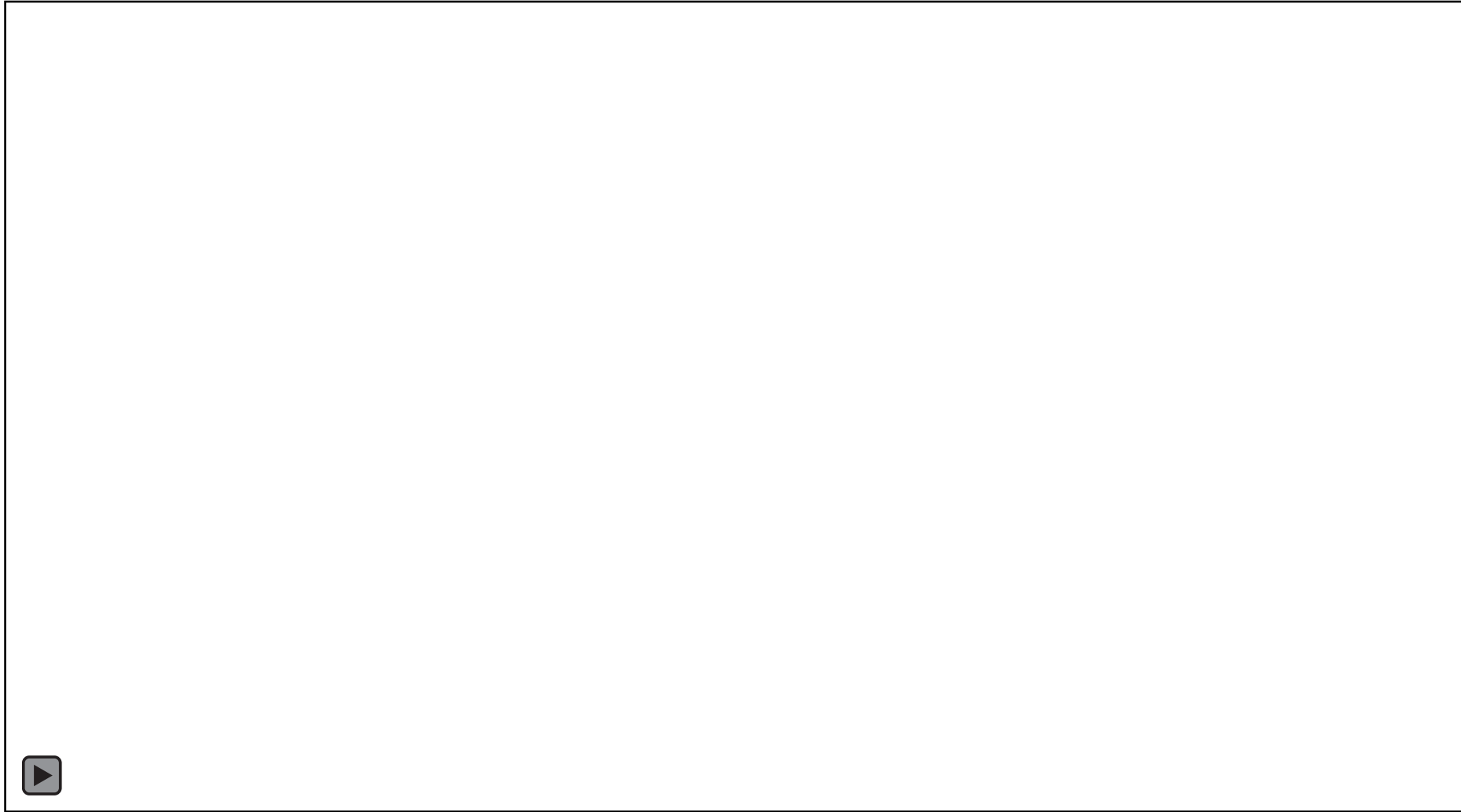
- Control data sources
  - Customized algorithms
  - Trained to seek specific answers

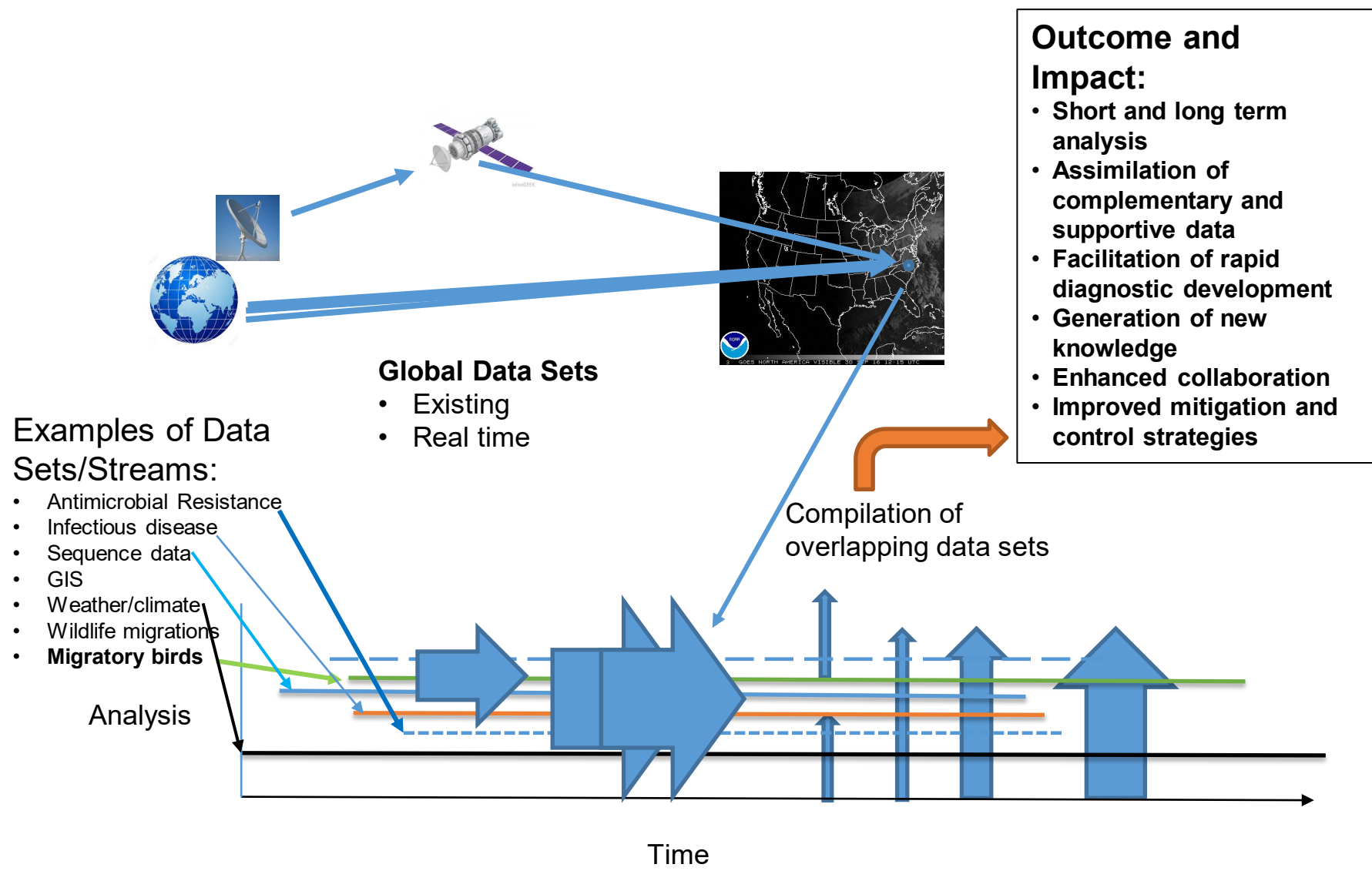
## **Public search engine**

- Google, yahoo, Bing, etc
  - Generic page rank algorithm
  - Highest ranked pages as search response



# AMR Genie





# 5 Unique Opportunities for Study of AMR

- Hurricanes
- Floods
- Drought
- Fire
- Volcanic eruptions
  
- In each case
  - Environment has been reset



usnews.com  
Hurricane  
Katrina



cnphilippines.com  
Philippines



Kstp.com  
Greenville, NC

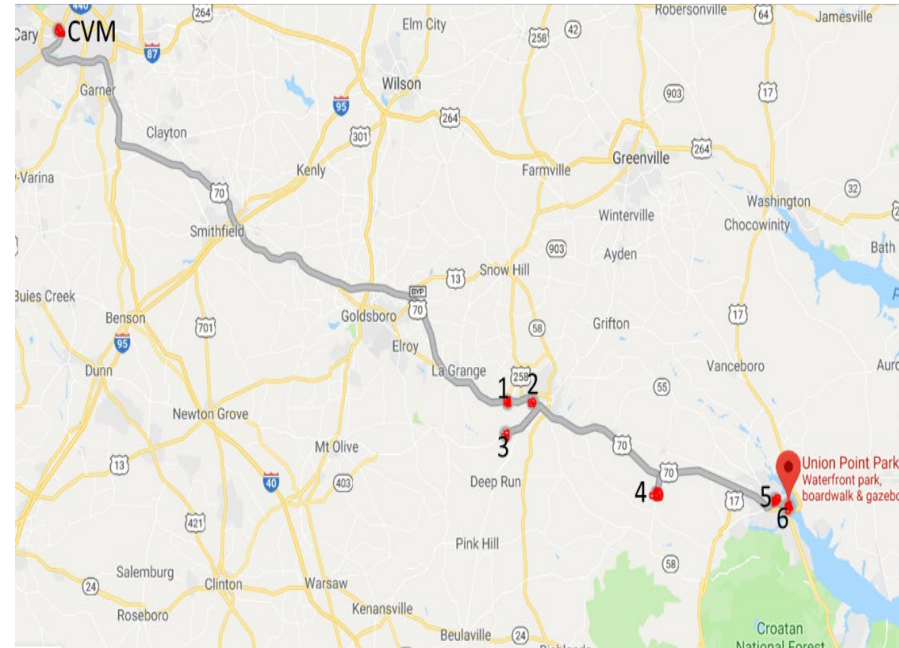
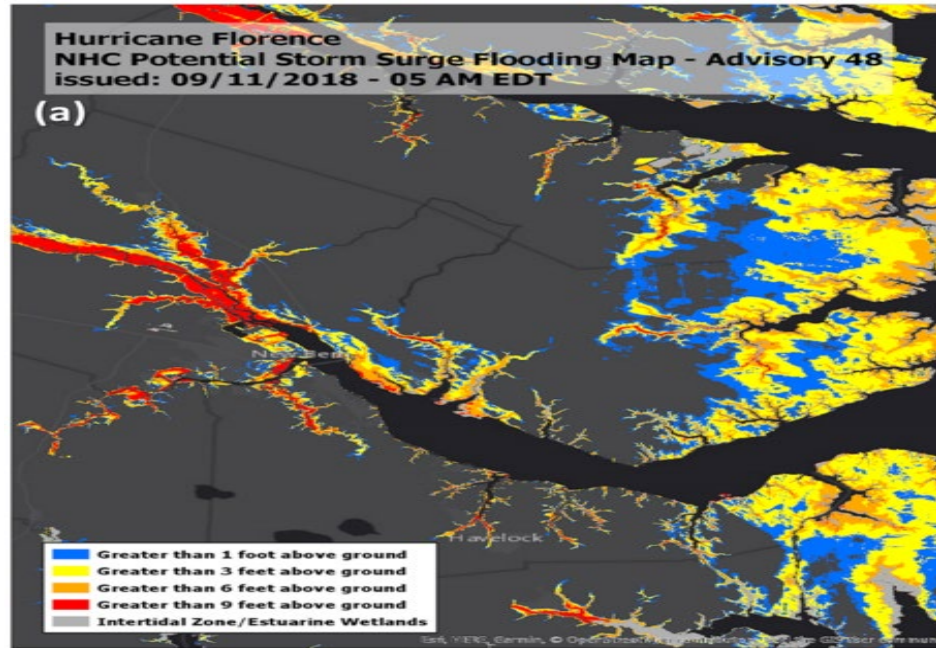


Strangesounds.org  
Indonesia



netnewsledger.com  
Ontario Forest  
Fires

# Sampling locations



**Sampling sites:** 1) poultry production, 2) Neuse river, 3) residential area, 4) swine farm, 5) human hospital and 6) a recreational park.

**Sample collection:** 10gm of soil (n=10) and 10ml of water samples (n=10) each month over a period of 12 months (November 2018- October 2019).

NC STATE

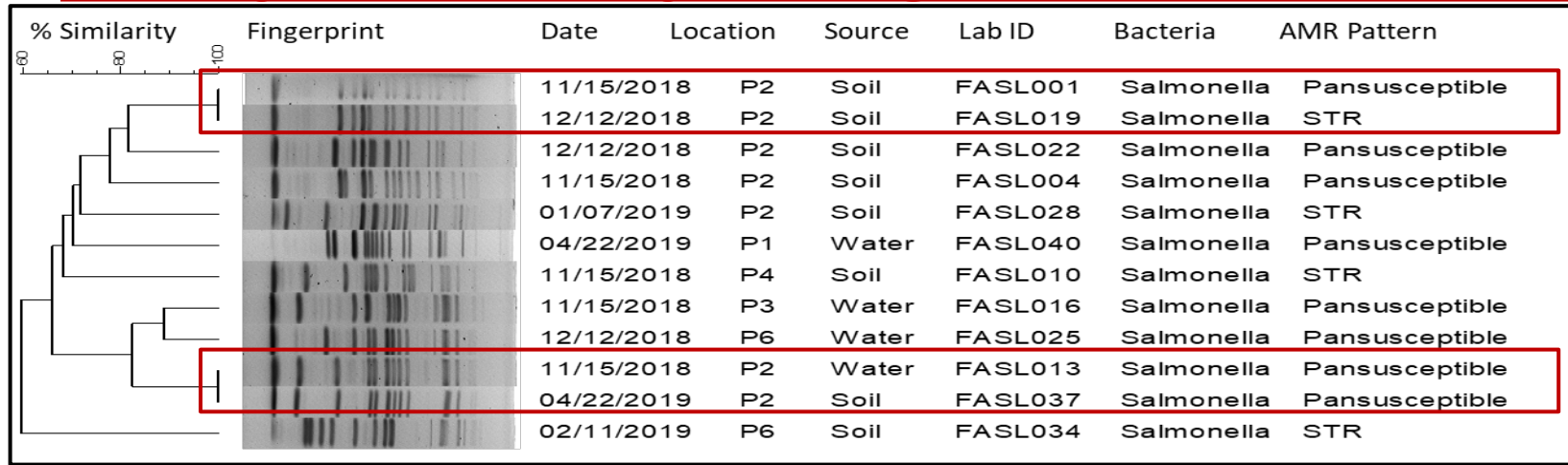
Veterinary Medicine  
Population Health  
and Pathobiology

NC STATE

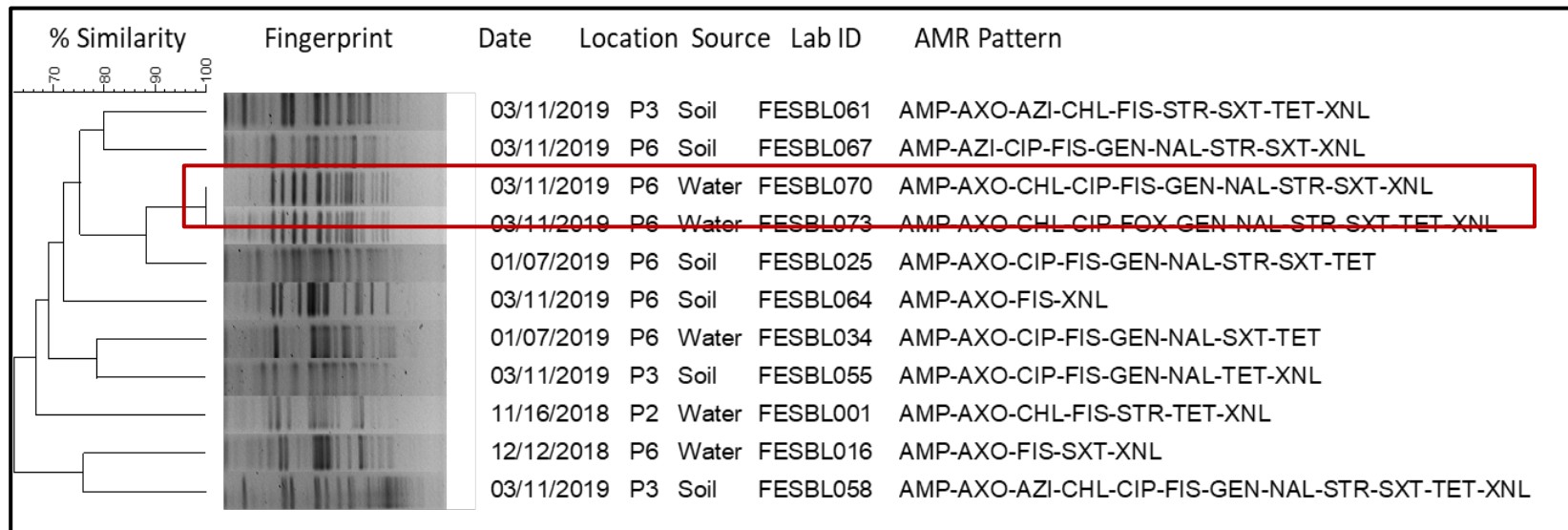
Veterinary Medicine



# Genotypic similarity among *Salmonella* isolates



# Genotypic similarity among ESBL *E.coli* isolates



**Legends:** P1- Poultry production; P2- Neuse river; P3- Residential area; P4- Swine farm; P5- Human hospital; P6-Recreational park; AMP-Ampicillin; AZI –Azithromycin; AUG-Amoxicillin-clavulanic acid; AXO- Ceftriaxone; CHL-Chloramphenicol; CIP-Ciprofloxacin; FOX-Cefoxitin; FIS-Sulfisoxazole; GEN-Gentamicin; NAL-Nalidixic Acid; STR-Streptomycin; SXT-Trimethoprim/Sulfamethoxazole; TET-Tetracycline; XNL-Ceftiofur

**Thank you and Questions?**