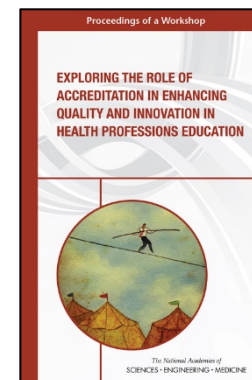
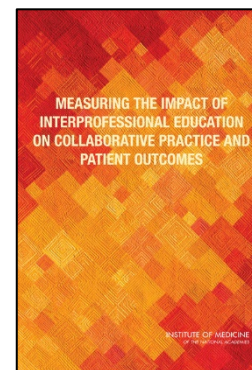
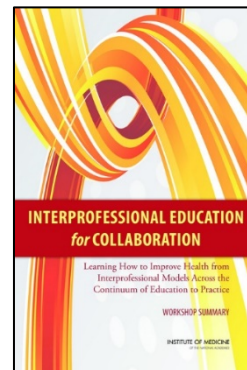
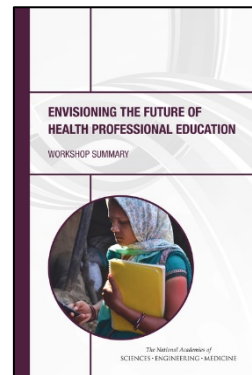




Global Forum on Innovation in  
Health Professional Education

# Introduction and Framing of IPE

Patricia Cuff, IHPE Forum Director



# IHPE Global Forum



- 50 members
- 37 sponsors
- 17 different health professions
- Global connections
- Neutral platform

Topics selected and paid for by the members

# Interprofessional Terminology Confusion

Multidisciplinary / Interdisciplinary / [Interprofessional](#)

Lack of agreement on terms so pay attention to the activities

Many think they are IP but are not (parallel play)

**NOT IPE:** Listening to a lecture while sitting next to learners from other professions

- Working with other professions to reach a common goal (case-based learning)
- Active learning from and with other professions (simulation)

**ROBUST IPE:** Experiential learning that is bounded by class time for preparation and reflection of the experience

**Not IPE - accredited**

**IPE is a Spectrum**

**Robust IPE- accredited**

Lecture only

Classroom work

Experiential activity

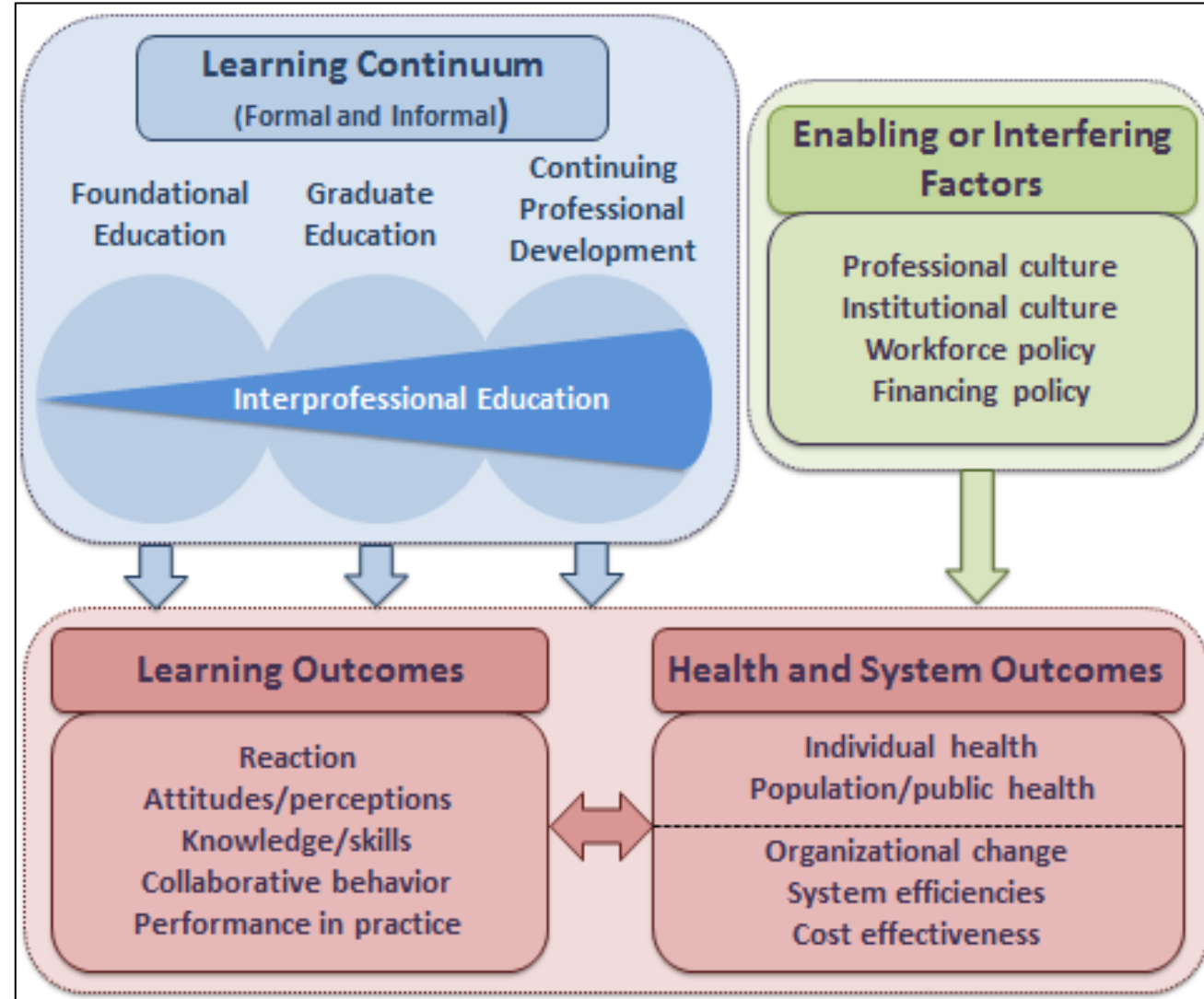
**Experiential + Classroom (prep + reflection)**

# IPE & One Health are Concepts

- There is no clear career trajectory
  - IPE'ist
  - One Health'ist

These concepts span across the Learning Continuum  
- IPE & One Health are Synergistic

Enabling and interfering factors  
- Culture & Policy



# Challenges Facing IPE & One Health

- LOGISTICAL
- LANGUAGE: Different terms mean the same thing (ex- IP professionalism, 14 health professions took 2yrs to define)
- CULTURE: Biomedical vs Bio-psychol-social-spiritual / Human vs Animal vs Environment
- TURF: Who gets the funding/power (ex- scope of practice)

# Using IPE to Overcome One Health Challenges

## LANGUAGE:

- Learn from and with other sectors across learning continuum (foundational to CPD)

## CULTURE:

- Respectful engagement / No blaming / Flat hierarchy / be aware of unfunded mandates

## TURF:

- IP funding equally across the 3 One Health areas
- Create champions - speak all 3 languages (i.e., understand the challenges faced by professionals in each area)

# IPE/One Health Across the Learning Continuum

---

## Components:

- Behavior (prescribers & users)
- Data collection & analysis
- Biology/pharmacokinetics
- Advocacy

**Foundational Education:** introduce One Health using robust IPE concepts - IP classroom learning about One Health and IP activities in local zip code and reflection

**Master's level:** apply IPE concepts to One Health data collection & analysis

**Doctoral level:** conduct IP grant funded research on One Health

**Professional level:** CPD & Informal IP activities; IP student programs

# Example

## Minnesota One Health Antibiotic Stewardship Collaborative (MDH)

Mainly for professionals from human, animal, and environment health to learn across professions and sectors

Abbott Northwestern Hospital / Achaogen / Allina Health / Children's Hospitals and Clinics of Minnesota / Emergency Physicians Professional Association- Minnesota / HealthEast / HealthPartners / Hennepin County Medical Center / Hormel / Leading Age Minnesota / M Health / Mayo Clinic / Merck Research Labs / Minnesota Beef Council / Minnesota Board of Animal Health / Minnesota Board of Dentistry / Minnesota Board of Veterinary Medicine / Minnesota Department of Agriculture / Minnesota Department of Health / Minnesota Department of Natural Resources / Minnesota Hospital Association Minnesota Milk Producers Association / Minnesota Pollution Control Agency / Minnesota Pork Board / Minnesota State Cattlemen's Association / Minnesota Turkey Growers Association / One Water, One Health, LLC. / Park Nicollet / Pipestone Veterinary Services / Regions Hospital / St. Paul Infectious Disease Associates, Ltd. / Stratis Health / **University of Minnesota** / **University of St. Thomas** / US Geographical Survey / Zoetis Animal Health



# The Collaborative

- **Interprofessional Field Trips:** Acute care hospital, LT care facility, dairy farm, science fair, humane society, waste water treatment plant, river to collect water samples (volunteer to attend)
- **Minn State Fair:** hosting a booth in the Eco Experience building with experts in medicine, animal health, public health, and environmental health to answer questions about antibiotic use, antibiotic resistance, and environmental impacts of antibiotics.
- **Masters/PhD** collect and analyze data to identify hotspots
  - Field samples to connect antibx use to environmental levels
  - Data to understand correlation between action and the environment
  - Advocate for behavior change (?policy change?)

# Thank you!