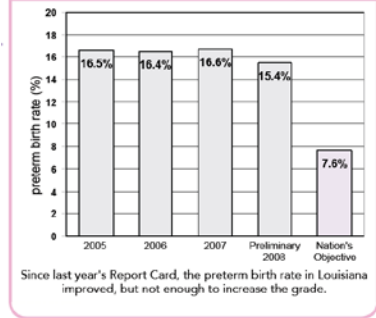


Improving Birth Outcomes



Rebekah E. Gee, MD MPH MSHPR FACOG



Indicator	US	Louisiana	Rank
Preterm birth (< 37 weeks gestation, %)	12.3	15.4	48 th
Low Birth Weight (< 2,500 grams, %)	8.2	10.8	49 th
Very Low Birth Weight (< 1,500 grams, %)	1.5	2.1	48 th
C-section rate (%)	32.9	39.6	50 th
Infant Mortality (<1 year old, per 1000 live births)	6.75	9.17	46 th

Source: Louisiana vital statistics 2010. Martin JA, Hamilton BE, Sutton PD, et al. Births: Final data for 2008. National vital statistics reports; vol 59 no 1. Hyattsville, MD: National Center for Health Statistics. 2010.

Opportunity for Impact

Race	Medicaid	Total Births	%
White	20256	37672	53.8
Black	23164	25698	90.1
Other	1761	2693	65.4
All races	45181	66063	68.4

In Louisiana, Medicaid pays for almost 70% of all births; the second highest Medicaid birth rate in the Nation.



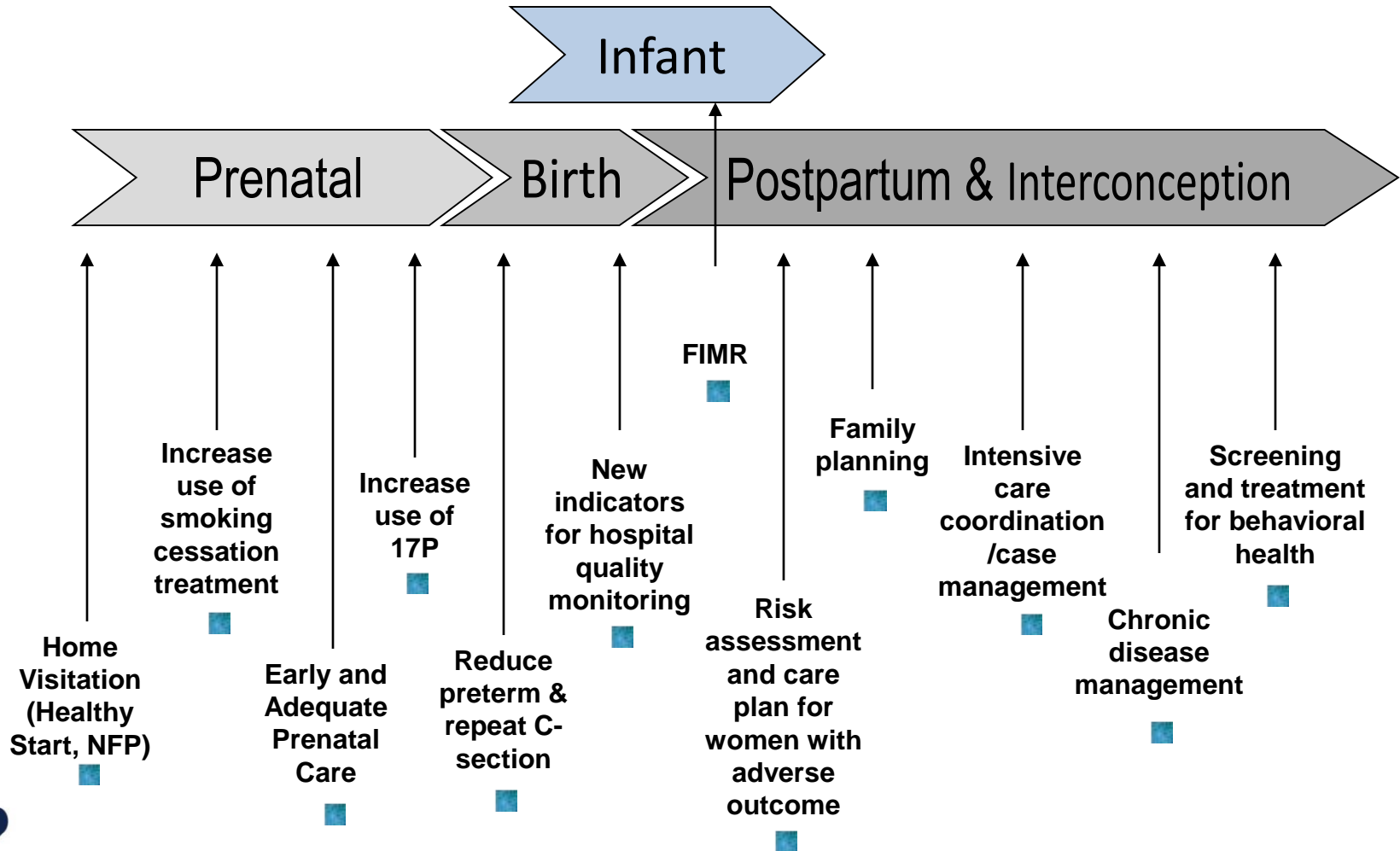
Louisiana Birth Outcomes Initiative

We strive to improve health and health care by:

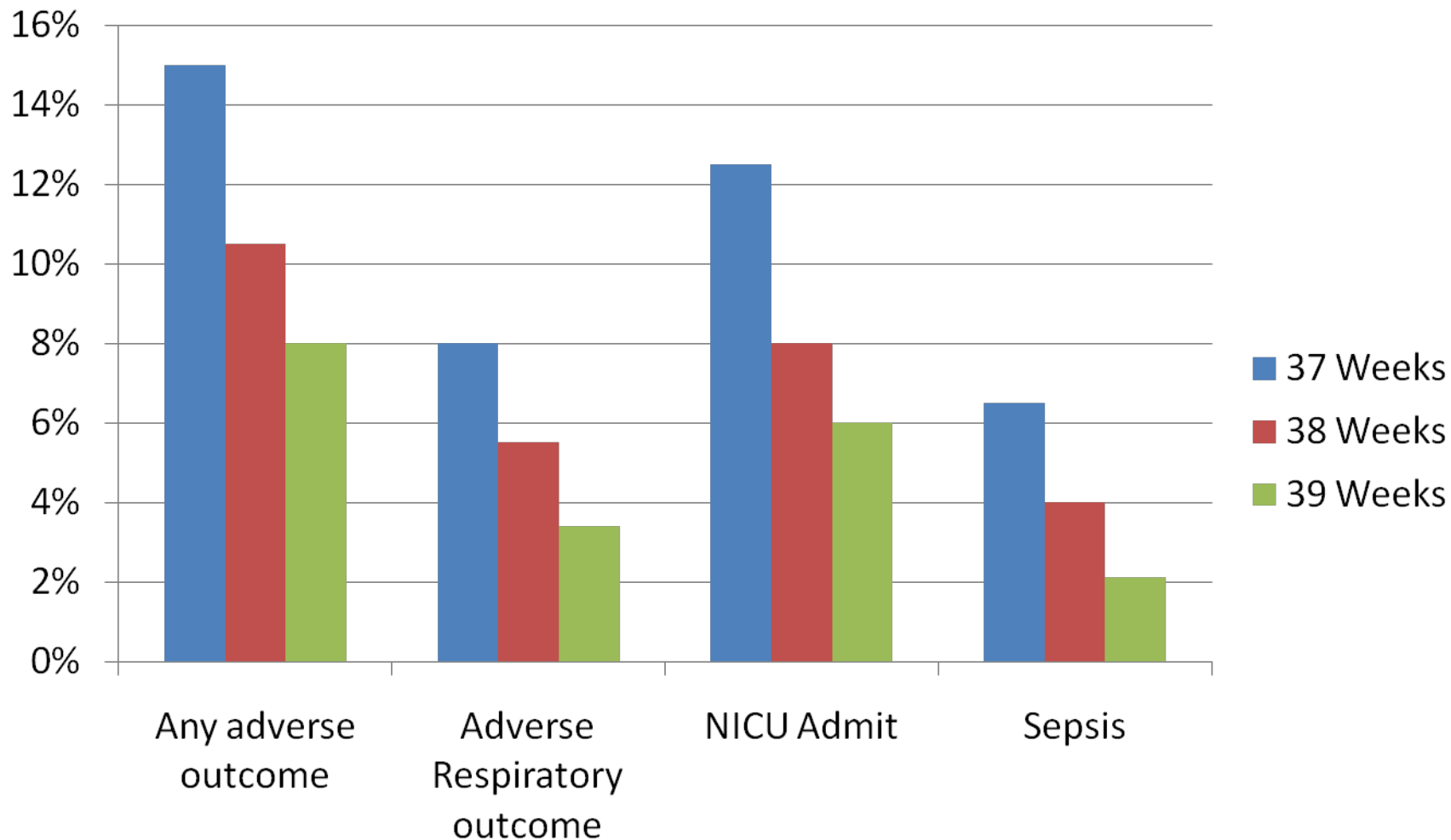
- Using the “Lifecourse” theory
- Motivating and building will for change
- **consensus, consensus, consensus**



Interventions to Improve Birth Outcomes



Complication Rates, Scheduled Repeat Cesareans by Weeks of Gestation



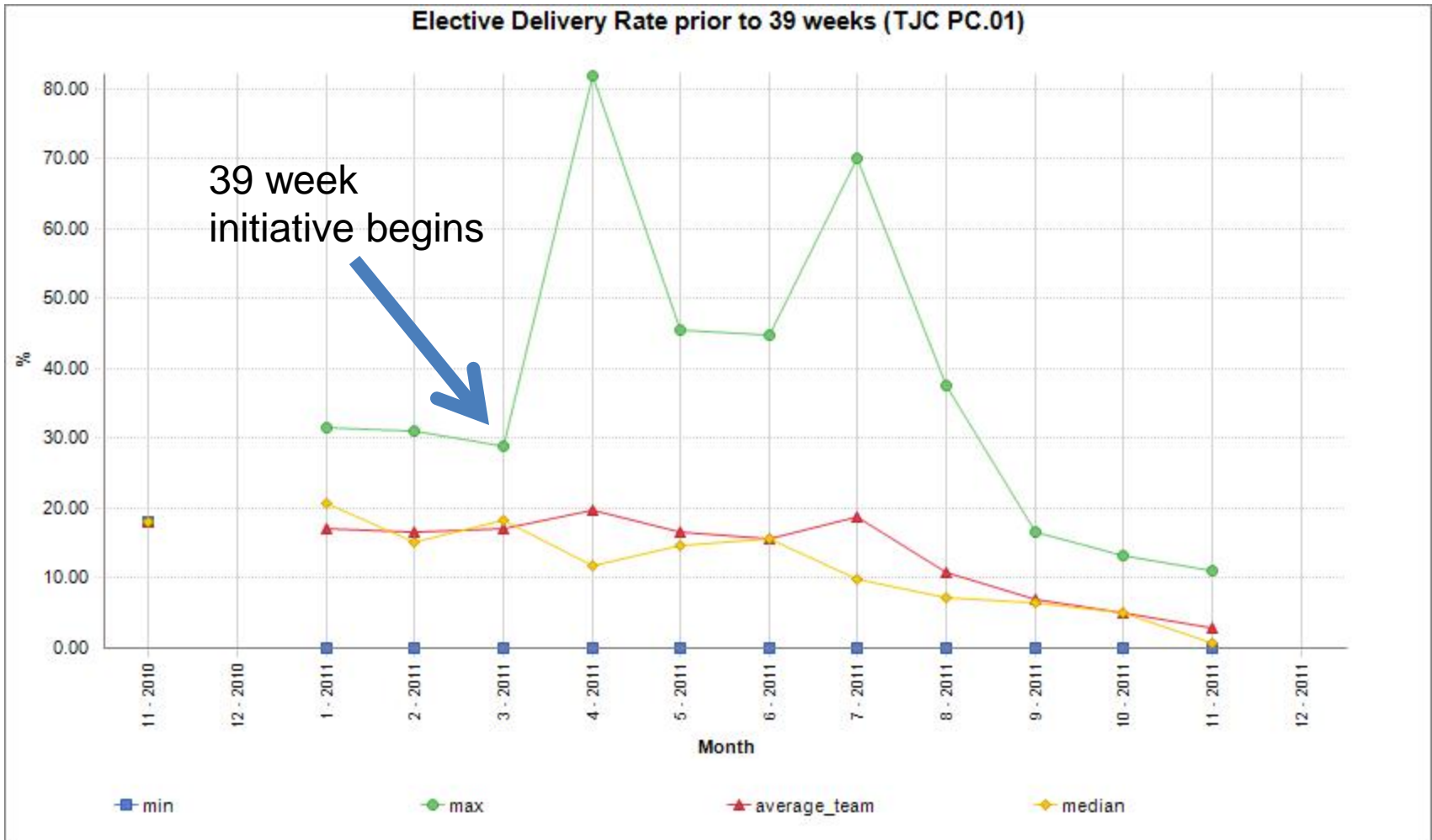
IHI/Louisiana Perinatal Collaborative

Louisiana is the first state in the nation to partner with the Institute for Healthcare Improvement to create a statewide quality improvement collaborative to address elective deliveries prior to 39 weeks.

- 15 of Louisiana's largest birthing hospitals participated in 2011
- Due to the success of current participants, the collaborative will expand to up to 35 hospitals in 2012



Progress!



Perinatal Quality Scores

- Pre-term births
- VLBW by level NICU
- Nulliparous term singleton vertex C-sections (NTSV)
- Elective deliveries < 39 weeks gestation



Reasons for Delivery Under 39 Weeks

- Spontaneous Active Labor
- Abnormal Fetal Heart Rate or Fetal Distress
- Abruption
- Cardiovascular Disease other than Hypertensive Disorder
- Chronic Pulmonary Disease
- Chorioamnionitis
- Coagulation Defects in Pregnancy
- Fetal malformation or congenital anomaly or disorder
- HIV
- Intrauterine growth restriction
- Isoimmunization
- Maternal renal or liver disease
- Placenta or vasa previa
- Polyhydramnios or oligohydramnios
- Premature rupture of the membranes
- Previously scarred uterus other than low transverse

DIABETES

- Pre-pregnancy (Diagnosis prior to pregnancy)
- Gestational (Diagnosis in this pregnancy)

HYPERTENSION

- Pre-pregnancy (Chronic)
- Gestational (PIH, Preeclampsia)
- Eclampsia

FETAL PRESENTATION AT BIRTH

- Breech
- Other (Non-cephalic)

OTHER

- (Specify): _____

NONE

- No medical reason.





- Home
- Assessment
- Submitted
- Facility Finder
- Resources
- Admin

Welcome to La HART

Welcome to the La HART (Louisiana Health Assessment, Referral and Treatment) Screening Tool. We hope you find the screen tool, as well as the resources provided, helpful. Please send any comments you may have to us at birthoutcomes@la.gov

For more information regarding the Birth Outcomes Initiative, please visit [DHH's Birth Outcomes Initiative](#) page.



- Home
- Assessment
- Submitted
- Facility Finder
- Resources
- Admin

Patient Summary

Patient Name: Caroline TestB
Assessment Date: 2/24/2012

Patient tested positive for tobacco <i>- I am not ready to reduce the risk of smoking to me or my baby. - I am not ready to quit smoking in the next 30 days.</i>	Fill out a tobacco referral form	Record Referral
Patient tested positive for alcohol/drugs <i>- I am ready to reduce the risk of alcohol/drugs to me or my baby. - I am not ready to quit using alcohol/drugs in the next 30 days.</i>	1-800-424-4399 TTY 1-800-424-4416 Answered 24/7/365	Record Referral
LOUISIANA DOMESTIC VIOLENCE HOTLINE (1.888.411.1333) number, available 24 hours a day, seven days a week	Click here to print a copy for the client	Record Referral

[Back](#)



Interpregnancy Care

Louisiana will work to provide interpregnancy care to all Medicaid eligible women through its managed care plans.

- 4 parish pilot program for interpregnancy care modeled after the Grady Memorial Hospital IPC program and conducted in conjunction with Healthy Start – New Orleans
- Statewide IPC provided through Louisiana's managed care plans





**Economic
Development**

**Community
Development**

**Educational
Development**

**Best
Babies
Zone**

**Health
Development**

Department of Health and Hospitals

Louisiana Birth Outcomes Initiative

DHH Bienville Building

628 N. 4th Street

Baton Rouge, Louisiana

(225) 342.9500

Website: www.dhh.la.gov

The Birth Outcomes Initiative

Rebekah Gee, MD, MPH, MS, FACOG

Director of Birth Outcomes

Michelle M Alletto, MPA

Deputy Director

Bruce Greenstein, Secretary

Kathy Kliebert, Deputy Secretary

Jerry Phillips, Undersecretary

