

# NHSC Updates

## Council on Graduate Medical Education

March 24, 2022

**Israil Ali, MPA | Director**

Division of National Health Service Corps (DNHSC)

Bureau of Health Workforce (BHW)

Health Resources and Services Administration (HRSA)



# Bureau of Health Workforce (BHW)

- BHW improves the health of underserved populations by strengthening the health workforce and connecting skilled professionals to communities in need.
- We approach our grant awards, loan repayment, and scholarship programs as a continuum of education, training and service.
- Following this approach, we work to create a well-distributed and robust workforce supply of diverse, culturally competent health professionals who provide quality health care in high-need areas of the U.S. and its territories.
- Specifically, our scholarship and loan repayment programs help underserved communities recruit and retain primary health care providers.

**28%** of BHW funding supports the NHSC and other programs that improve the distribution of health professionals to underserved areas.



For nearly 50 years, the NHSC has worked to:

- **Build healthy communities by supporting qualified health care providers** dedicated to working in areas of the United States and its territories with limited access to primary health care, regular dental and behavioral health care, and preventive screenings.
- **Improve access to these crucial services** by practicing in health professional shortage areas across the country.
- **Help clinicians pay off their health professional student loan debt in exchange for their service in high-need areas** through scholarships and loan repayment programs.



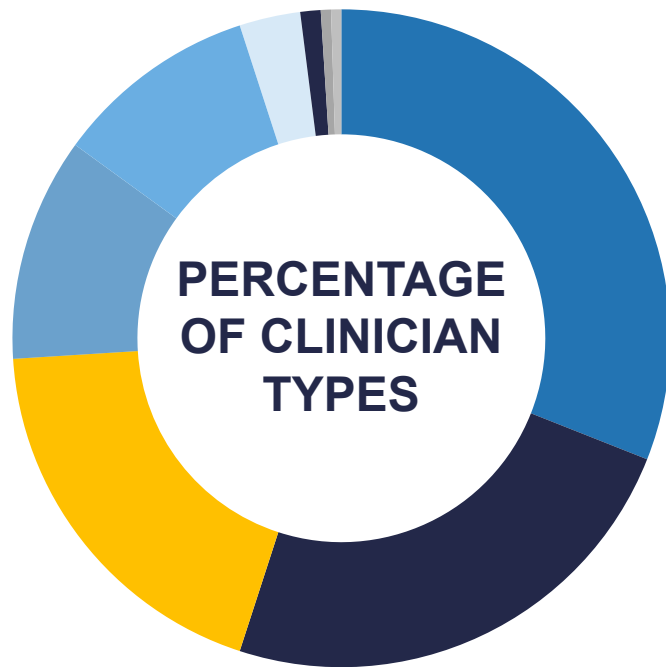
# Impact of the NHSC: Largest class in program history

Nearly  
**20,000**  
*NHSC members are  
currently providing  
care to more than*  
**21**  
**million**  
*people in the U.S.*

- In 2021, we awarded every eligible applicant making this our largest class of clinicians ever.
- Many NHSC members continue to serve in areas of greatest need beyond their service obligation.



# National Health Service Corps: Now



- 47% Behavioral Health Providers
- 19% Nurse Practitioners
- 13% Physicians
- 9% Dentists
- 8% Physician Assistants
- 2% Registered Hygienists
- 1% Certified Nurse Midwives
- <.4% \*Registered Nurses
- <.6% \*Pharmacists



## Applications and Awards

### Loan Repayment Programs

FY 2021



\*Applications Received

**9,985**

\*New Awards

**8,830**

*\*Figure includes three LRPs and LRP continuations*

### Students to Service

FY 2021



Applications Received

**380**

New Awards

**257**

### State Loan Repayment Program

CURRENT



Awards Made to

**41**

States

**1**

Washington D.C.

**1**

U.S. Territory

### Scholarship Program

FY 2021



Applications Received

**1,982**

New Awards

**1,192**

# FY22 NHSC Budget Overview



NHSC Budgets	FY22 Balance
Mandatory Funding	\$292M
Discretionary Funding	\$121M
American Rescue Plan Funding	\$345M
American Rescue Plan Funding (State Loan Repayment Program)	\$100M
<b>Total</b>	<b>\$858M</b>



# FY22 NHSC Priorities



## FY22 NHSC Priorities

1. Dedicated Support to the NHSC Pipeline
2. Optimize Data Utilization
3. Establishing Outreach to Health Professional Pathway and Pipeline Programs



# FY22 NHSC Priorities: Dedicated support to the NHSC pipeline

## ➤ Increase the NHSC pipeline's readiness to serve HPSAs

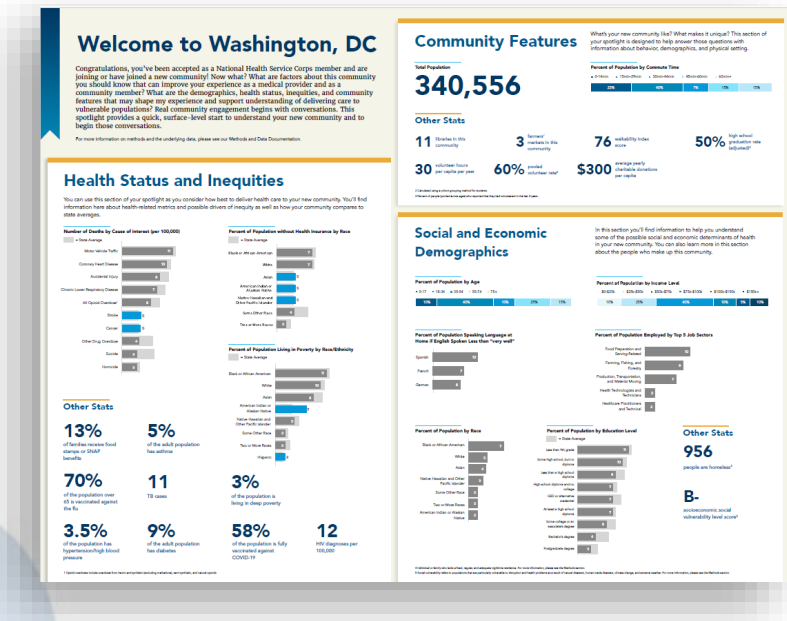
(e.g. Technical Assistance, Resources, and tools to address resiliency and prevent burnout)

## ➤ Expand disciplines for the S2S LRP program

(e.g. Physician Assistants)

## ➤ Recognize BHW funded post-graduate trainings completed by the NHSC pipeline

(e.g. Scholars and S2S participants)



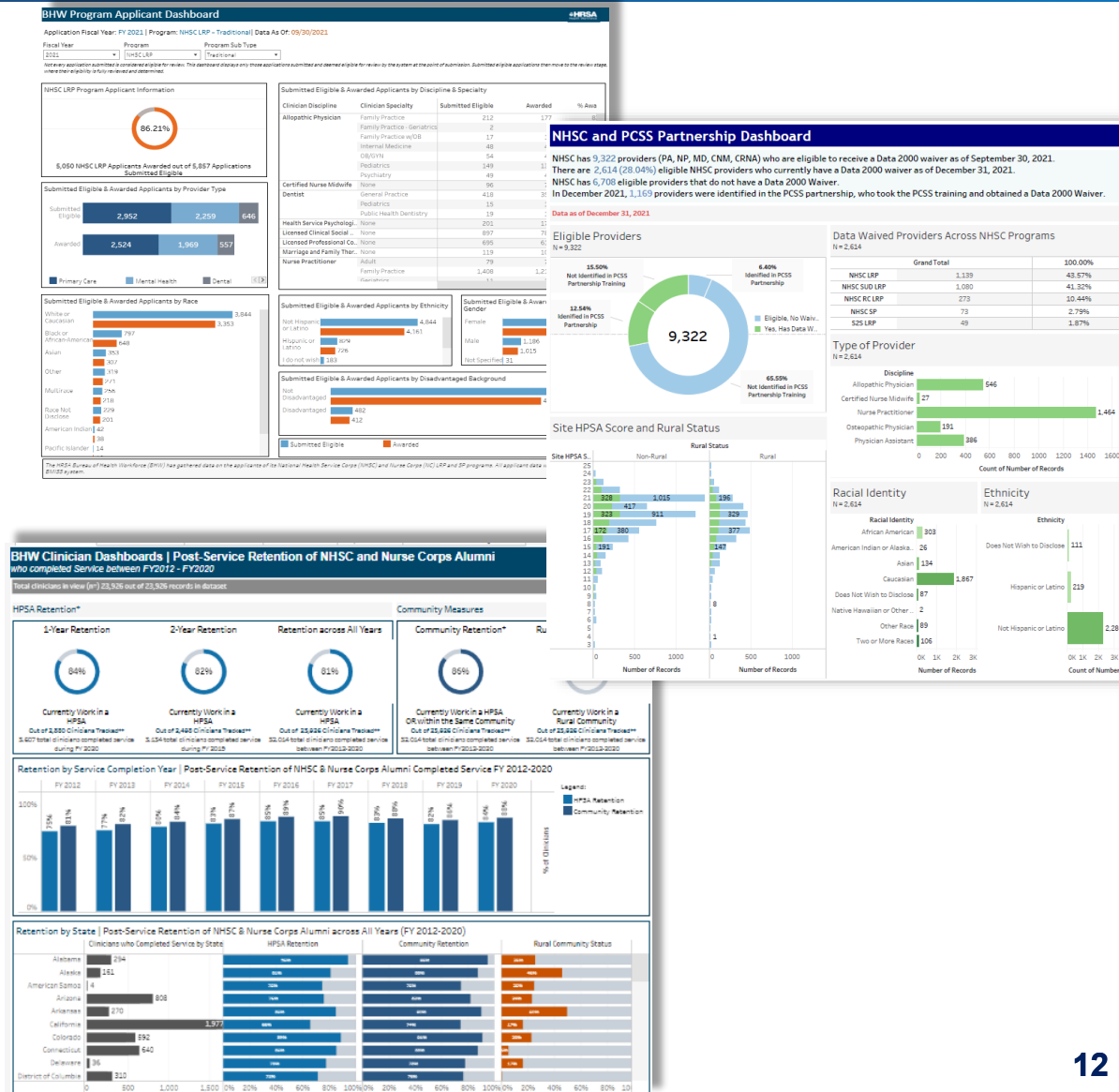
# FY22 NHSC Priorities: Optimizing Data Utilization

➤ Evaluate the applicants who apply to NHSC programs

➤ Externalizing NHSC Data

(e.g. NHSC dashboards)

➤ Laying the foundation for NHSC outcomes



# FY22 NHSC Priorities: *Outreach to Health Professional Pathway and Pipeline Programs*

## ➤ Continue to Identify BHW Program linkages

(e.g., Teaching Health Center GME, Addiction Medicine Fellowship, etc.)

## ➤ Target NHSC outreach to health professional pathway programs

## ➤ Evaluate residency and fellowship programs of the NHSC pipeline





## Contact Us

- **Israil Ali, Director**
- Division of National Health Service Corps (DNHSC)
- Bureau of Health Workforce (BHW)
- Health Resources and Services Administration (HRSA)
- Phone: 1-800-221-9393 (Customer Care Center); M-F, 8 a.m. to 8 p.m. ET, except federal holidays

Web: <http://nhsc.hrsa.gov>

Health Workforce Connector: <http://connector.hrsa.gov/>

 Facebook: <http://facebook.com/nationalhealthservicecorps>

 Twitter: <http://twitter.com/NHSCorps>

 LinkedIn: <http://www.linkedin.com/company/national-health-service-corps>

Learn more about our agency at:

**[www.HRSA.gov](http://www.HRSA.gov)**



Sign up for the HRSA eNews

FOLLOW US:

