

Pregnancy Risk Assessment Monitoring System (PRAMS) Questionnaire Revision

Lee Warner, PhD

Chief, Women's Health and Fertility Branch

Ada Dieke, DrPH, MPH

Health Scientist, Women's Health and Fertility Branch, PRAMS Team

Division of Reproductive Health (DRH)

National Center for Chronic Disease Prevention and
Health Promotion

Advisory Committee on Infant Mortality

June 23, 2021



PRAMS

THE BEST SOURCE OF DATA ON MOTHERS AND BABIES



What is PRAMS?



- Established in 1987 as part of CDC Safe Motherhood and Infant Health Initiative
- Ongoing, population-based surveillance system
- Self-reported maternal behaviors and experiences around the time of pregnancy
- Supplements birth certificate information
- Jurisdiction-specific and near-national estimates



PRAMS website:

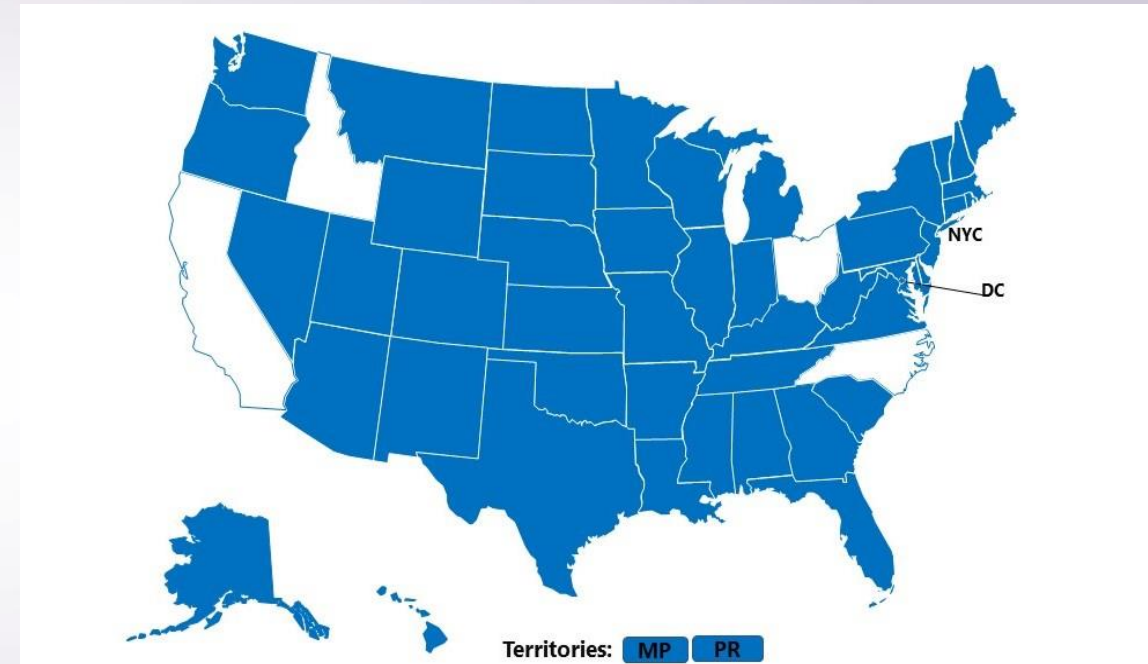
<http://www.cdc.gov/prams>

Updates from PRAMS: Surveillance



New Funding Cycle (2021-2025)

- 50 jurisdictions
 - 46 states
 - 4 cities/territories
 - District of Columbia
 - New York City
 - Puerto Rico
 - Northern Mariana Islands
- Represents 81% of live births



Updates from PRAMS: Data Availability



2019 data

- Now available!
- New indicators
 - Prescription opioid use
 - Maternal disabilities

2020 data

- Expected release fall 2021
- New indicators
 - COVID-19 experience

[Request data at https://www.cdc.gov/prams/index.htm](https://www.cdc.gov/prams/index.htm)

Current Phase 8 Questionnaire



Established Topics

- Preconception care
- Pregnancy intention
- Prenatal care
- Health insurance
- Cigarette and alcohol use
- Intimate partner violence (physical abuse)
- Postpartum contraception
- Mental health (depression)
- Breastfeeding
- Infant sleep environment

Emerging Topics

- 2016** E-cigarette and hookah use
Zika virus
- 2017** Marijuana use
- 2019** Prescription opioid use
Maternal disability
- 2020** COVID-19 experience
- 2021** COVID-19 vaccine
Social determinants of health

Phase 9 Questionnaire Revision



PRAMS

THE BEST SOURCE OF DATA ON MOTHERS AND BABIES

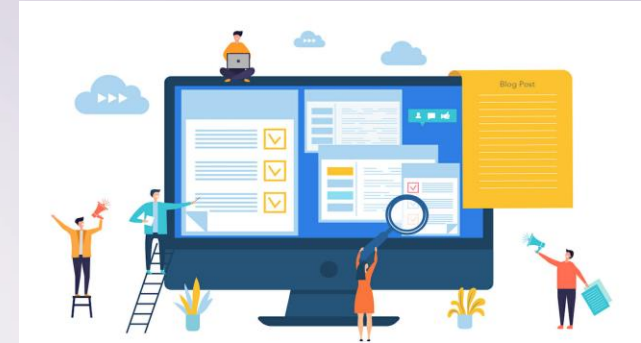


Three Main Goals of Phase 9 Revision



1. Update survey content (Phase 8 implemented in 2016)

- Ensure relevance of topics & questions to current environment
- Address emerging priorities in MCH



2. Capture priority topics across various internal and external partners

3. Align with national performance measures (e.g., HP 2030, Title V)

Phase 9 Revision Timeline



Mar–Apr 2021
Internal planning
and consultation

Jul–Aug 2021
Question
development
and selection

Dec 2021
Questionnaire
content finalized

Apr 2023
Phase 9
survey
launch

May-Jun 2021
External feedback
on priority topics
requested; new and
revised questions
solicited

Sept-Nov 2021
Cognitive & field
testing of
questions

Jan 2022 – Mar 2023
Site-specific
questionnaire layouts;
PIDS software
programmed

Proposed Additions to the Core



Additions to Existing Topics

- Contraception
 - Reproductive coercion
 - Contraception timing
- Mental Health (anxiety)
- Preconception / Prenatal / Postpartum Care
 - Urgent maternal warning signs
 - Pregnancy-induced conditions
 - Cardiac indicators
 - Management of chronic conditions
 - Sexually transmitted infections
- Maternal Vaccination
 - Tdap
 - COVID-19

New Topics

- Adverse childhood experiences (ACEs)
- Social determinants of health
 - Food/nutrition security
 - Experiences of discrimination and bias
 - Social support
- Emergency preparedness
- Patient-centered and respectful care
- Stressors

Phase 9 Revision Timeline



Next Steps

Mar–Apr 2021
Internal planning
and consultation

Jul–Aug 2021
Question
development
and selection

Dec 2021
Questionnaire
content finalized

April 2023
Phase 9
survey launch

May–Jun 2021
External feedback
on priority topics
requested; new and
revised questions
solicited

Sept–Nov 2021
Cognitive & field
testing of
questions

Jan 2022–Mar 2023
Site-specific
questionnaire layouts;
PIDS software
programmed

Questions & Discussion

- What topics would the Committee like to see revised from the current Phase 8 questionnaire?
- What are the Committee's thoughts on the proposed additions to Phase 9 questionnaire?
- What other MCH topics should the Phase 9 questionnaire capture?



Contact Information



General questions about PRAMS

- Lee Warner (DWarner@cdc.gov)

Questions about questionnaire revision process

- Ada Dieke (ADieke@cdc.gov)
- Brenda Bauman (BBauman@cdc.gov)

Proposal Submission

- pramsphase9revision@cdc.gov