



# **"Opportunities to Apply a Health Equity Lens to Rural and Underserved Care"**

National Advisory Council on the National Health Service Corps (NACNHSC) Meeting

March 29, 2022



## **Maisha Standifer, PhD**

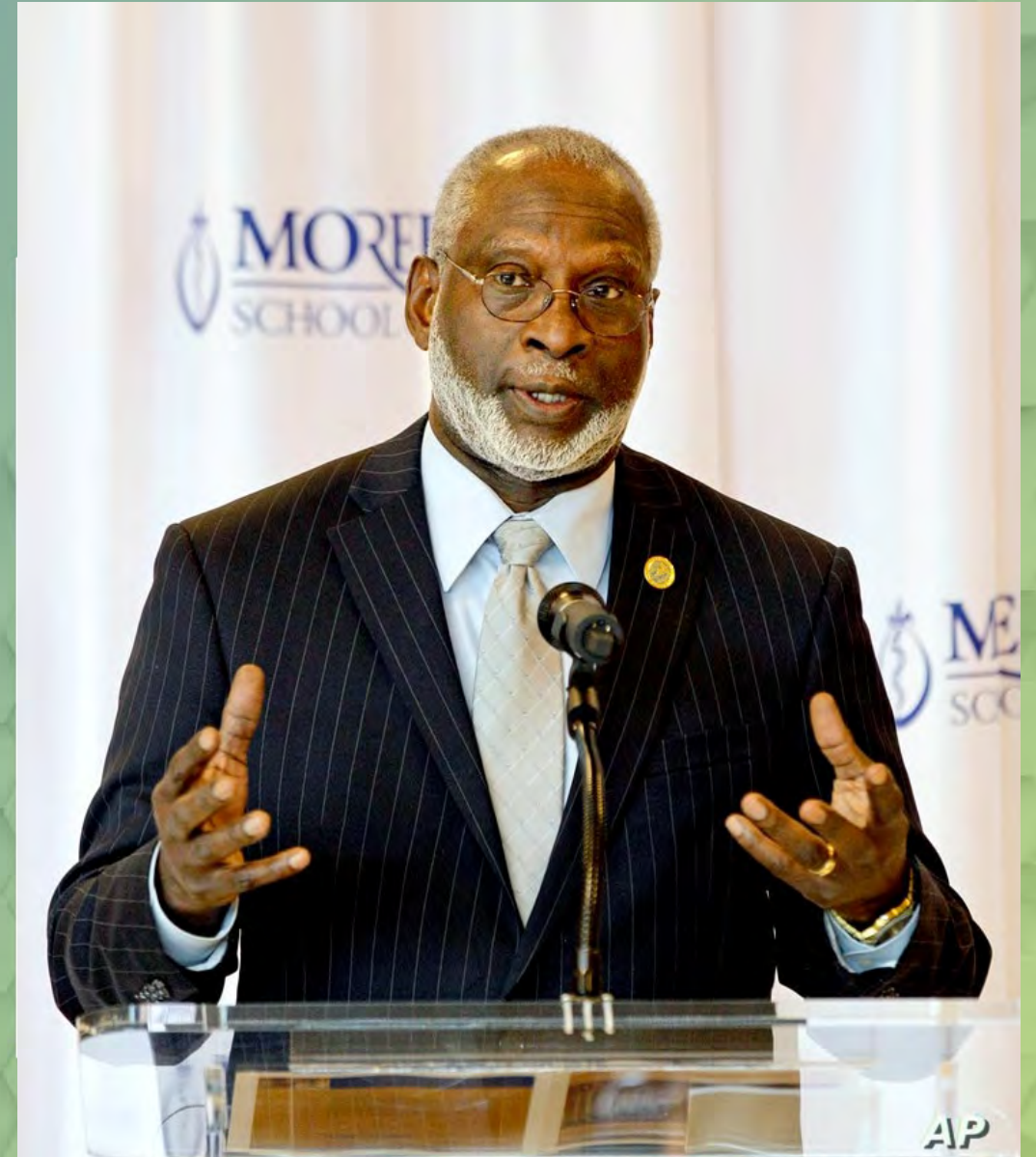
- Director, Health Policy, Satcher Health Leadership Institute (SHLI), Morehouse School of Medicine (MSM)





## David Satcher MD, PhD

- Founder, Satcher Health Leadership Institute (SHLI) at the Morehouse School of Medicine (MSM)
- Health Equity Ambassador
- 16<sup>th</sup> Surgeon General of the United States





## **Daniel Dawes, JD**

- Executive Director, Satcher Health Leadership Institute (SHLI) at the Morehouse School of Medicine (MSM)



Satcher Health Leadership Institute

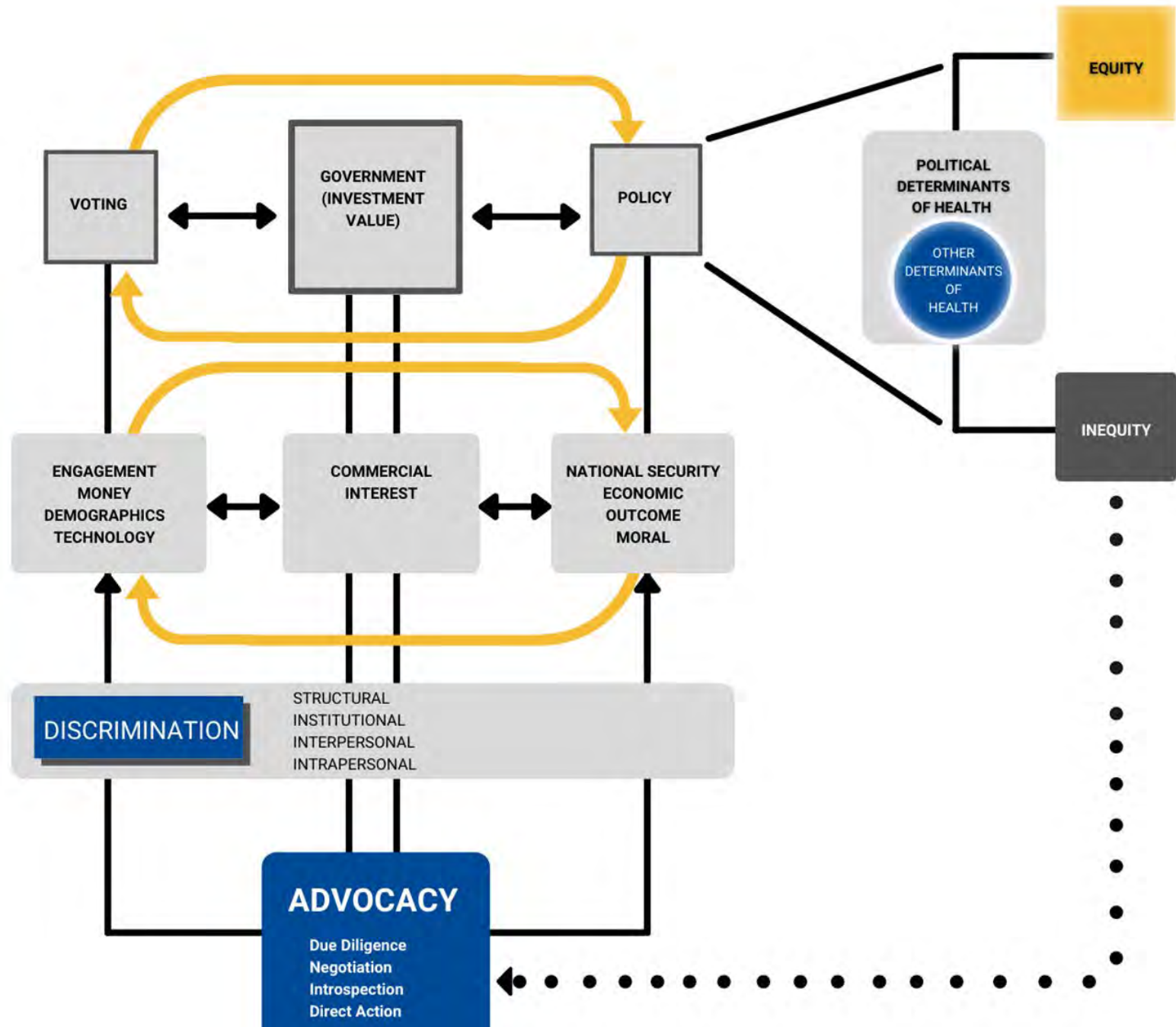
---



**MOREHOUSE**  
SCHOOL OF MEDICINE

**SHLI MISSION:  
CREATING SYSTEMIC CHANGE AT THE  
INTERSECTION OF POLICY AND EQUITY**

# POLITICAL DETERMINANTS OF HEALTH MODEL



# What are PDoH and Why Do They Matter?

**Health is NOT an organic outcome**

**One major factor has exacerbated disparities in health status: *OUR POLITICAL SYSTEM***

## **PDoH**

- Inequitably distribute social, medical and other determinants
- Create structural barriers to equity for population groups that lack power and privilege

# Why did we create the PDoH Learning Laboratory?

## Lack of Policy Responses

- Historically, there have been no equitable policy responses enacted in the U.S. during an ongoing epidemic or pandemic
- Provide policy makers and community champions with a real-time, critical understanding of the historical and current systems that have produced health inequities
- SHLI developed PDOH framework, will guide virtual trainees in the development of local policy action in transforming systems that have historically created the disproportionate gaps that exist among marginalized communities



# Why did we create the PDoH Learning Laboratory?

## COVID-19 Exposed Systemic Barriers

- Infections impacted communities that were already vulnerable/under-resourced
- Alarming statistics require immediate attention in order to prevent further marginalization of African American, Hispanic, and Native American communities
- SHLI recognized the immediate need to assemble key decision makers and community change agents by equipping them with the necessary tools to examine the PDOH factors influencing their communities and take actionable steps toward eliminating disproportionate health outcomes

# Provision of Data to Drive Policy

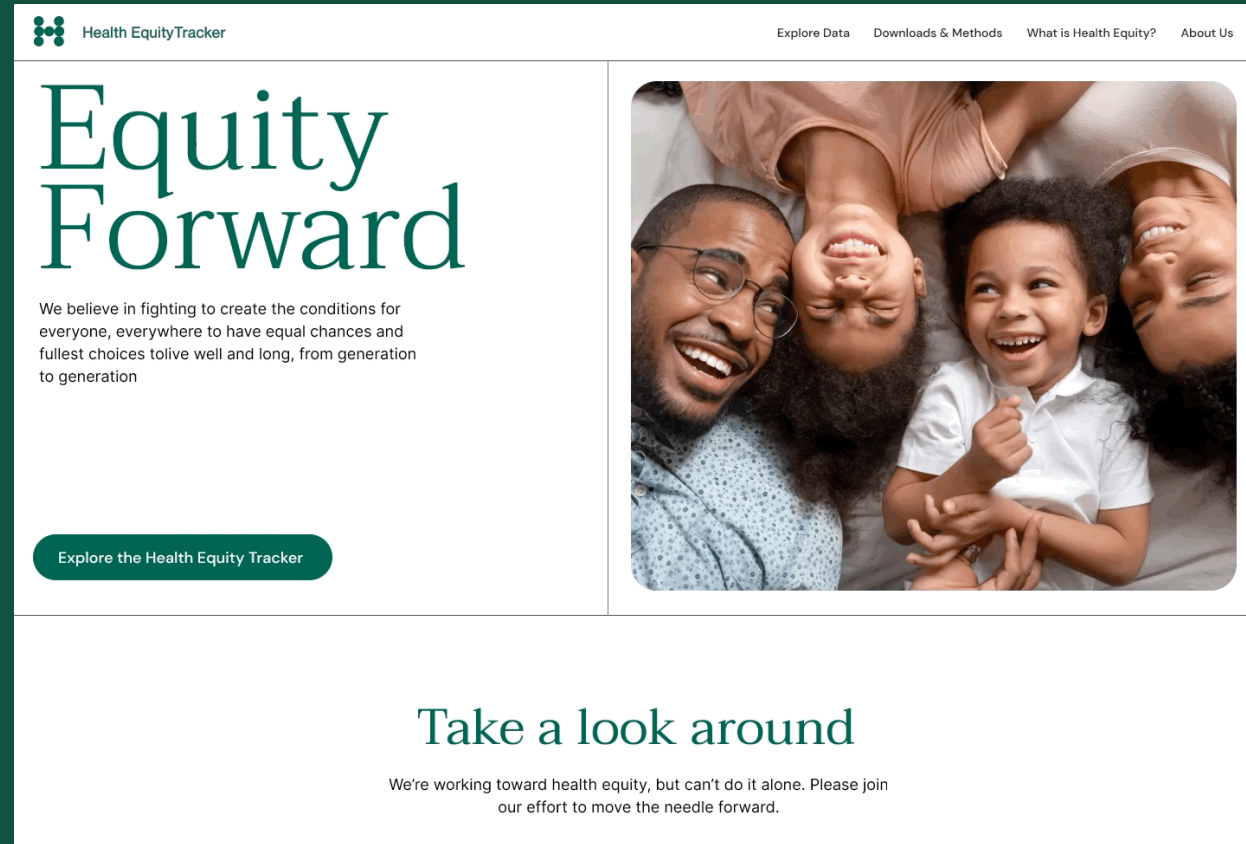
- Preliminary data has demonstrated that racial and ethnic minority groups are disproportionately impacted by COVID-19
- Available data for race and ethnicity remains inconsistent
- To understand the trajectory of COVID-19 implications for health equity, we will provide access to a the MSM-SHLI data tracker
  - Provides real-time tracking and mapping of demographic data to county-level systems indicators

# The Health Equity Tracker goes deeper than Covid-19...

A **single platform** that is scalable and agile to visualize data on:

- Covid-19
- Chronic Conditions
- Diabetes
- COPD
- Poverty
- Insurance Rates
- Political and Social Determinants

...scalable to add more data sets over time using existing assets.



The screenshot shows the homepage of the Health Equity Tracker website. At the top, there is a navigation bar with the logo 'Health EquityTracker' on the left and links for 'Explore Data', 'Downloads & Methods', 'What is Health Equity?', and 'About Us' on the right. The main content area features a large heading 'Equity Forward' in a green serif font. Below the heading is a paragraph: 'We believe in fighting to create the conditions for everyone, everywhere to have equal chances and fullest choices to live well and long, from generation to generation'. To the right of the text is a photograph of a diverse group of people, including a man with glasses, a woman, and a young child, all smiling and looking towards the camera. Below the text and image is a green button with the text 'Explore the Health Equity Tracker'. At the bottom of the page, there is a section with the heading 'Take a look around' and a sub-headline: 'We're working toward health equity, but can't do it alone. Please join our effort to move the needle forward.'

# About the Program

- Provide an opportunity for leaders and community champions to enhance skills in policy and health equity
- Training will foster community partnerships between the participating officials and their partnering Community-Based Organizations (CBOs)
- Equipped with tools to examine the PDOH factors influencing their respective local communities.
- Each team:
  - Develop a health equity initiative designed to address identified conditions unique to their local populations and communities
  - Receive grant funds to implement their proposed health equity initiative



W.K.  
KELLOGG  
FOUNDATION™

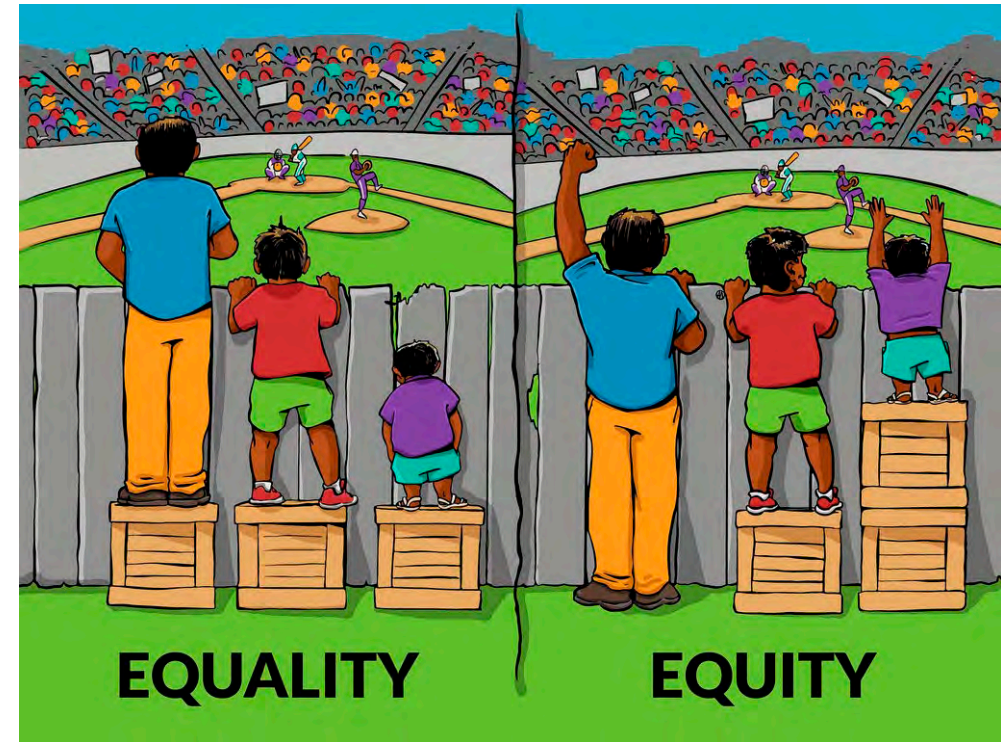
# PDoH Learning Laboratory Curriculum

## September 2021 – January 2022

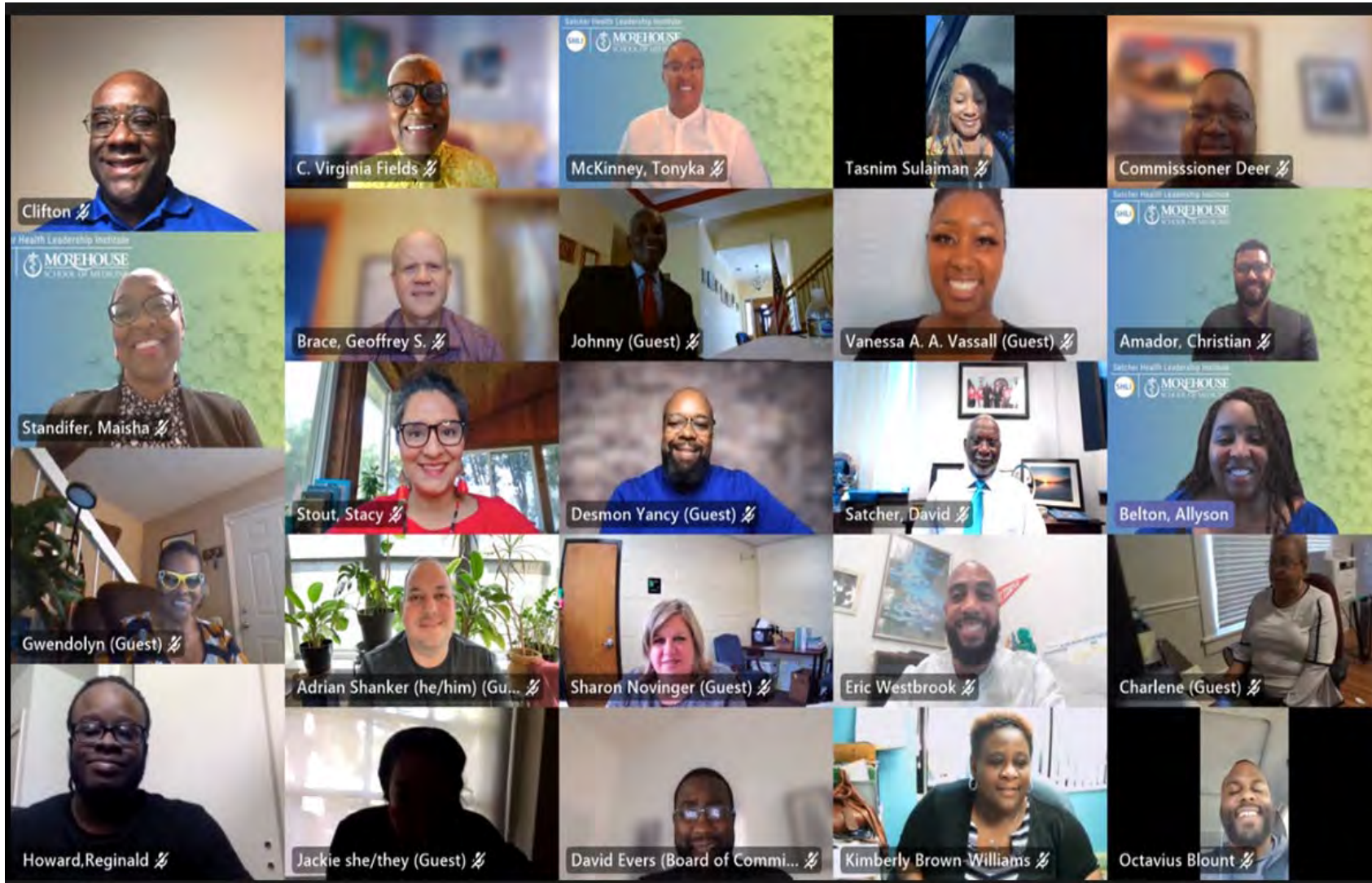
- Leadership & Community Engagement
- Health Policy & Community Impact
- Health Systems Transformation
- Employing PDoH in Community
- Research and Program Development
- Advocacy and Health Equity
- Future of Health Equity

## February 2022 – July 2022

- Project Implementation Funding Disbursed (February 2022)
- 1-on-1 Consultations – Team and Project Support
  - Coalition-Building, Solution Development & Strategies for Advocacy



# PDOH Fellows



# Informing Policymakers to Address Climate Justice & Environmental Political Determinants of Health

- Funded by the Environmental Defense Fund (EDF)
- Focused on climate change crisis and environmental injustice impact on marginalized communities
- To address disparities in environmental health, SHLI will:
  - Lead environmental and PDOH- Brown Bag Lunch Series
    - Bi-annual/quarterly series for legislators and policymakers
      - Focus on topics related to addressing water quality, carbon emissions, energy and power conservation, and climate change effects on communities of color/vulnerable communities all through a policy and health equity lens.
  - Assess and analyze the national landscape to identify gaps in policy, practice and research towards the development of a book that will address the intersectionality of climate change and health equity among vulnerable population

# Title: Climate Change and Health Equity Justice (Co-edited Book)

Johns Hopkins University Press

- Purpose: To provide novel perspectives at the intersection of health equity and climate change crisis
- Book will present scholarly perspectives, insight and complexities within the intersections of health inequities, climate change implications, and impact on vulnerable communities
- Edited volume will provide a critical examination of PDOH factors that create, perpetuate, and exacerbate health inequities and environmental injustice due to climate change impacts; as well as illumination about the unique experiences of BIPOC communities as catalysts for transformation in the United States and globally
- Projected Book to be published in late 2022/early 2023



# Medical Cannabis 65+ & Vulnerable Communities

- Funded by Kessler Research Foundation
- Collaborated with the Health Equity Leadership and Exchange Network (HELEN)
- Led comprehensive, systematic and multidisciplinary approach to research on medical cannabis barriers to access and equity for adults 65 years and older
- Assessed the national, political, legal and regulatory landscape
- Project Deliverables
  - National Medical Cannabis Policy Scan
  - Expert Roundtable and Town Hall

# Satcher Health Leadership Institute



**MOREHOUSE**  
SCHOOL OF MEDICINE

**Satcher Health Leadership Institute  
Morehouse School of Medicine  
720 Westview Drive, SW | Atlanta, GA 30310  
satcherinstitute.org**

