



# National Advisory Council on the National Health Service Corps (NACNHSC) Virtual Meeting

*March 16, 2021*

**Luis Padilla, MD, FAAFP**  
**BHW Associate Administrator**  
Health Resources and Services Administration (HRSA)

**Vision: Healthy Communities, Healthy People**



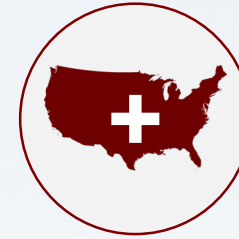
# Agenda

---

- ▶ Health Care Workforce – Growth & Demand
- ▶ Mission & Strategies for Success
- ▶ Budget, Program Aims to Better Serve the Communities
- ▶ Updates on Programs & Other Initiatives
- ▶ Executive Orders & Looking Ahead



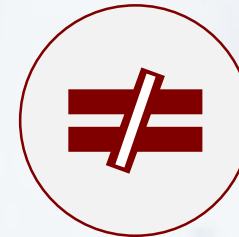
# The U.S. Health Workforce



**GROWING  
DEMAND**



**SHRINKING  
SUPPLY**



**UNEQUAL  
DISTRIBUTION**

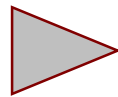
# Bureau of Health Workforce

**MISSION** Improves the health of underserved populations by

- ▶ strengthening the health workforce
- ▶ connecting skilled professionals to communities in need



**EDUCATION**



**TRAINING**



**SERVICE**

# HRSA Workforce Program Aims



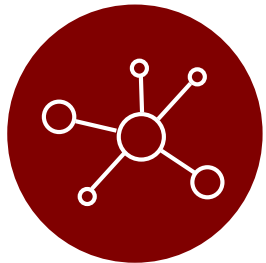
## ACCESS

Make it easier for people to access health care



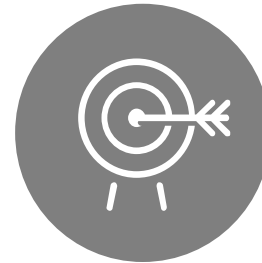
## SUPPLY

Balance the supply of health workers with the demand for care



## DISTRIBUTION

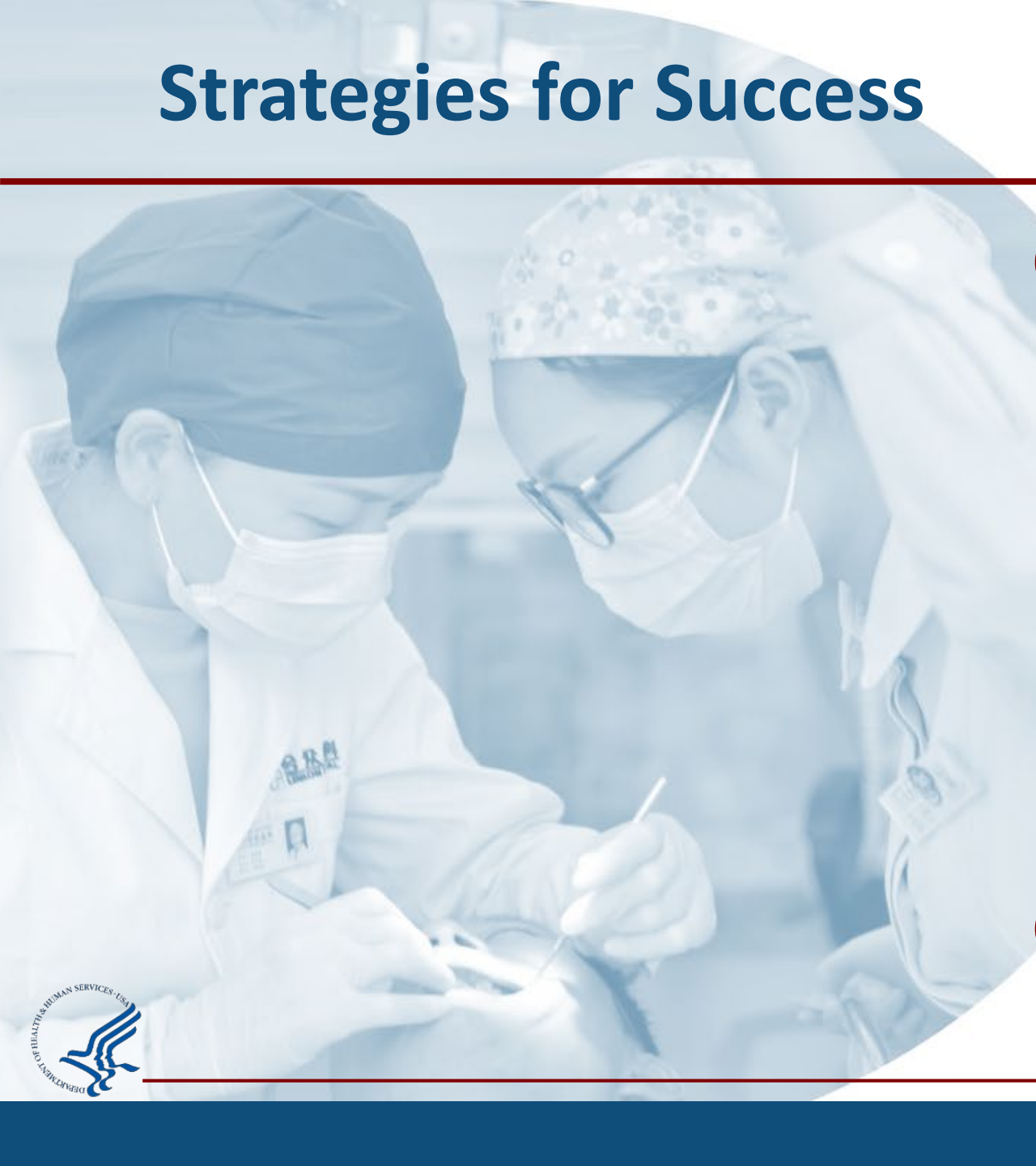
Improve distribution of the health workforce



## QUALITY

Improve the quality of the health workforce and the care they provide

# Strategies for Success



Train students in rural and underserved communities



Leverage our loan and scholarship programs



Recruit students from the communities we serve



Train interprofessional and collaborative teams



Integrate behavioral and oral health into primary care



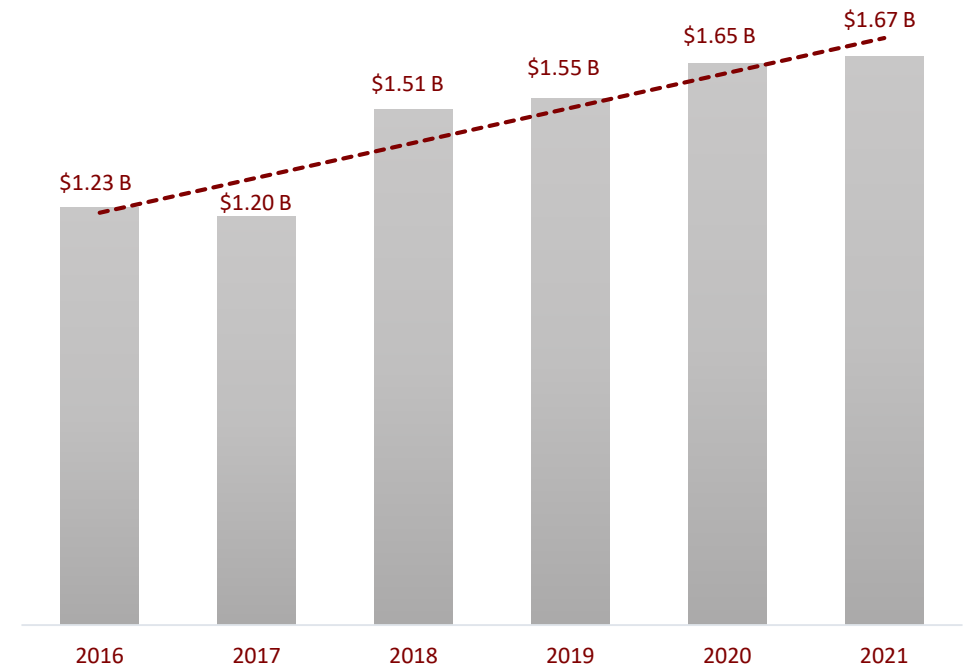
Support community-based training



# Budget: FY 2021 and History

Bureau of Health Workforce Programs	FY2021 (in \$M)
Children's Hospital Graduate Medical Education (CHGME)	350.0
National Health Service Corps (NHSC) <sup>M</sup>	310.0
Nursing Workforce Development	175.8
Behavioral Health Workforce Development	149.9
Teaching Health Center Graduate Medical Education (THCGME) <sup>M</sup>	126.5
NHSC <sup>D</sup>	120.0
Diversity Programs	90.2
Nurse Corps	88.6
Medical Student Education (MSE) Training	50.0
Primary Care Training and Enhancement (PCTE)	48.9
Area Health Education Centers (AHEC)	43.2
Geriatric Programs	42.7
Oral Health Training	40.7
National Practitioner Data Bank User Fees	18.8
Public Health Workforce Development	17.0
Health Care Workforce Assessment	5.7
Faculty Loan Repayment	1.2
<b>Total, Program Level</b>	<b>\$1.67 billion</b>

M = Mandatory D = Discretionary



# American Rescue Plan Act of 2021

---

## \$1.9 trillion stimulus package

to BHW

- \$800M** Sec. 3032. National Health Service Corps (including \$100M for State Loan Repayment)
- \$200M** Sec. 3033. Nurse Corps
- \$330M** Sec. 3034. Teaching Health Centers Graduate Medical Education
- \$80M** Sec. 3053. Mental and Behavioral Health Training for Health Care Professionals, Paraprofessionals, and Public Safety Officers
- \$40M** Sec. 3055. Grants for Health Care Providers to Promote Mental and Behavioral Health Among their Health Professional Workforce
- \$100M** Sec. 3059b. Behavioral Health Workforce Education and Training





# Positioning the Bureau to Better Serve Communities

## EXTERNAL FORCES

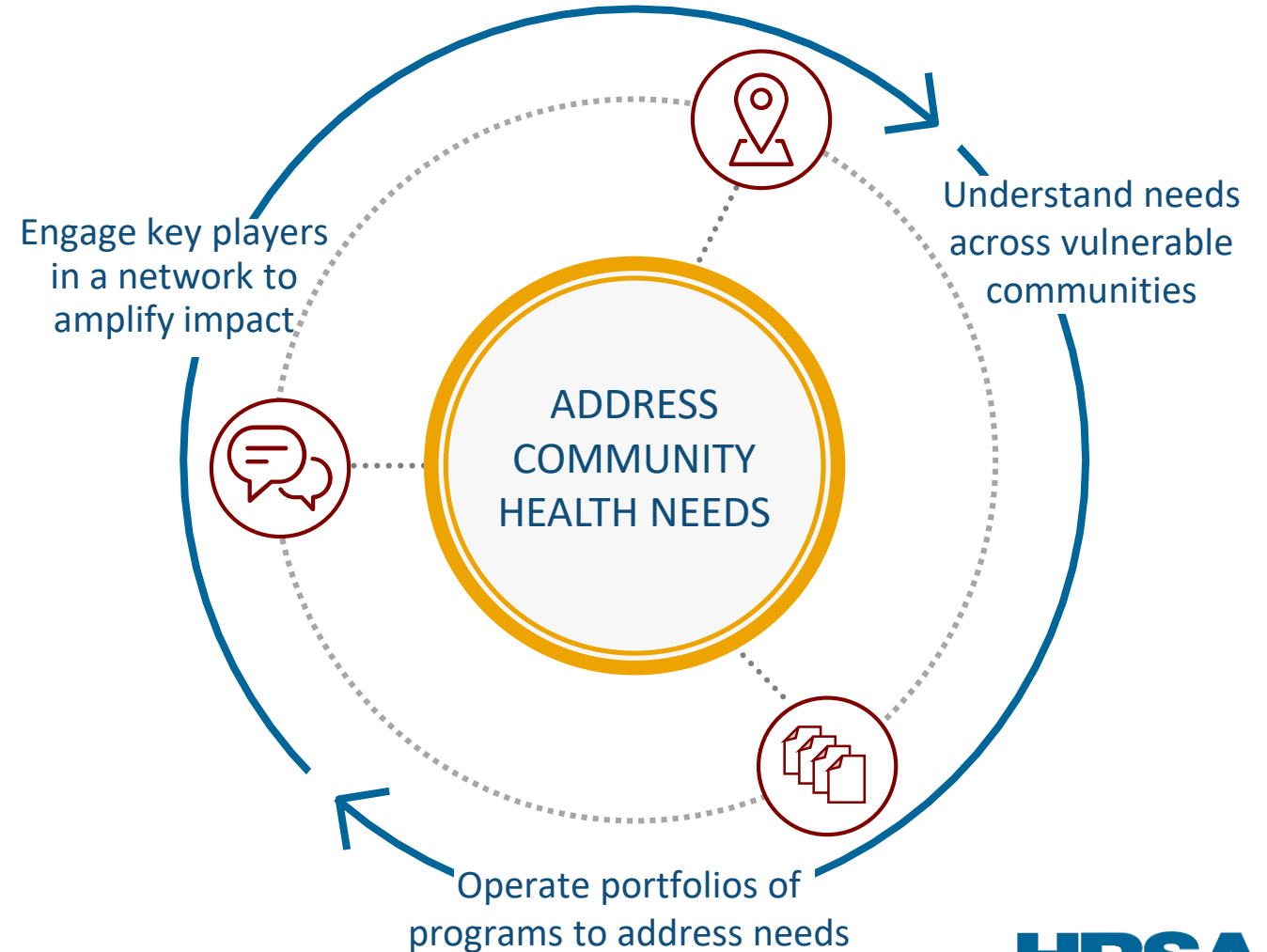


The **COVID-19** crisis disproportionately affects underserved communities.

**Racial inequity** exacerbates disparities in community health.



The **shifting healthcare landscape** emphasizes consumer-driven delivery and value-based care models.



# Supporting BHW Aims to Amplify Impact

## STRATEGIC INITIATIVES

## OUTCOME ALIGNMENT

## FUTURE SHIFT



**Understand needs across vulnerable communities**



**Addressing community needs**  
*Use community needs data to inform bureau-wide decisions and fund programs that bridge gaps, such as the Opioid-Impacted Family Support Program*



**Operate portfolios of programs to address needs**



**Investing in the health workforce**  
*Link newly funded substance use grant programs to the National Health Service Corps to provide a direct path from training to service*



**Engage key players in a network to amplify impact**



**Shaping delivery through the health workforce**  
*Engage policymakers to address provider well-being solutions, such as building the paraprofessional and non-clinical workforce*



# Behavioral Health Workforce Pilot



# Postgraduate Community-Based Training




# Loan Repayment & Scholarship Programs

## NATIONAL HEALTH SERVICE CORPS *and* NURSE CORPS

support qualified clinicians working in areas of the U.S. with limited access to care.

NHSC	NC
<b>\$430 M</b>	<b>\$89 M</b>



**18,072**  
members

FY 2020

Americans served	18.8 million
NHSC field strength 2016 to 2020	50% increase
Clinicians in HRSA-funded health centers	57%
Clinicians in rural communities	34%



# Behavioral Health Workforce Development Programs

## BEHAVIORAL HEALTH PROGRAMS

train professionals and paraprofessionals in effective treatments to increase access to services in rural and underserved communities.

**\$149.9 M**



**7,371**

trainees

AY 2019-2020

Trained in MUCs | 71%

SUD training | 52%

Graduates | 5,080

Plan to continue in a MUC | 43%

# Nursing Workforce Development Programs

## NURSING WORKFORCE DEVELOPMENT PROGRAMS

help address the critical shortage of nurses in high-need areas, whether urban, rural, or tribal.

**\$175.8 M**



**25,436**

trainees

AY 2019-2020

Trainees from disadvantaged backgrounds	41%
Training sites	5,661
Training sites in MUCs	61%
Graduates	10,039



# Public Health Workforce Development Programs

## PUBLIC HEALTH TRAINING CENTERS

increase the number, quality, and ability of public health workers.

**\$9 M**



**408**

trainees

AY 2019-2020

Regional centers	10
Trainees from underrepresented minorities	38%
Trained in MUCs	60%
Plan to work or train further in MUCs	68%



# Primary Care Medicine Programs

**MEDICINE PROGRAMS** support educational programs for primary care physicians and physician assistants while in school and postgraduate training.

PCTE	MSE	THCGME
<b>\$49 M</b>	<b>\$50 M</b>	<b>\$127 M</b>



**15,844**  
participants/trainees

AY 2019-2020

Disadvantaged backgrounds	28%
MUC-based training sites	53%
Graduates	4,140
Plan to practice in primary care	74%

# Geriatric & Pediatric Programs

**GERIATRICS WORKFORCE ENHANCEMENT *and* CHILDREN'S HOSPITALS GRADUATE MEDICAL EDUCATION PROGRAMS** help prepare providers to meet the health care needs of children and the elderly.

GWEP	CHGME
<b>\$42.7 M</b>	<b>\$350 M</b>



AY 2019-2020

GWEP trainees from targeted backgrounds	46%
---	-----

GWEP graduates plan to work in MUCs	63%
-------------------------------------	-----

CHGME awards	58
--------------	----

CHGME trainees from targeted backgrounds	22%
--	-----

# Oral Health Programs

**ORAL HEALTH PROGRAMS**  
expand access to and delivery  
of oral health care services,  
particularly in high-need areas.

**\$26.6 M**



**11,725**

participants/trainees

AY 2019-2020

Programs

5

Trainees from  
disadvantaged  
backgrounds

33%

Post-doc graduates'  
plans to work in  
primary care

100%

Graduates

2,892

# Career Development & Diversity Programs

## PIPELINE AND DIVERSITY PROGRAMS

build the diversity and distribution of health professionals in high-need areas.

AHEC  
**\$43 M**

Diversity  
**\$90 M**



**335,429**

participants/trainees

AY 2019-2020

Trainees from rural backgrounds | 39%

Training sites | 7,547

Training sites in MUCs | 63%

Graduates / Program completers | 302,396

# Health Workforce Connector



27,000+  
Sites



4,000+  
Opportunities



Virtual Job Fairs  
Next one is on 3/24/2021

## FEATURES

- Career and training opportunities
- Customized profiles
- Powerful filters



For NHSC and Nurse  
Corps healthcare  
facilities

# National Practitioner Data Bank



Adverse Action  
Reports



Medical Malpractice  
Payment Records



Judgment or  
Conviction Reports

## BENEFITS

- Improves health care quality
- Protects the public
- Reduces health care fraud and abuse



Access only for  
registered entities



Self-query for practitioners,  
providers, and suppliers

# National Center for Health Workforce Analysis



Collects workforce data



Conducts analyses and projections



Develops performance measures and benchmarks



Distributes findings



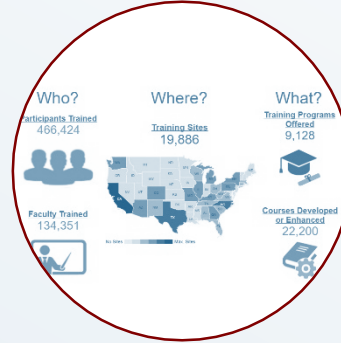
Informs planning, development, and policy-making



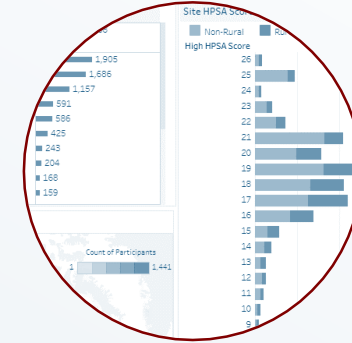
# Publicly Available Health Workforce Data



Clinician Dashboards

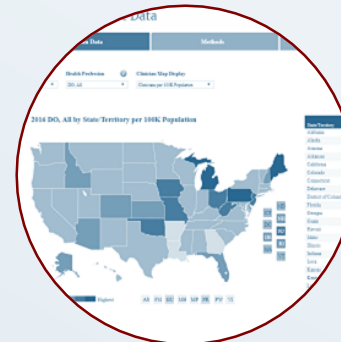


Health Professions Training Programs



Field Strength Dashboards

data.HRSA.gov



Area Health Resources Files



Shortage Areas





# Presidential Executive Orders & Looking Ahead



# Executive Orders

---

## COVID-19 and the Health Workforce

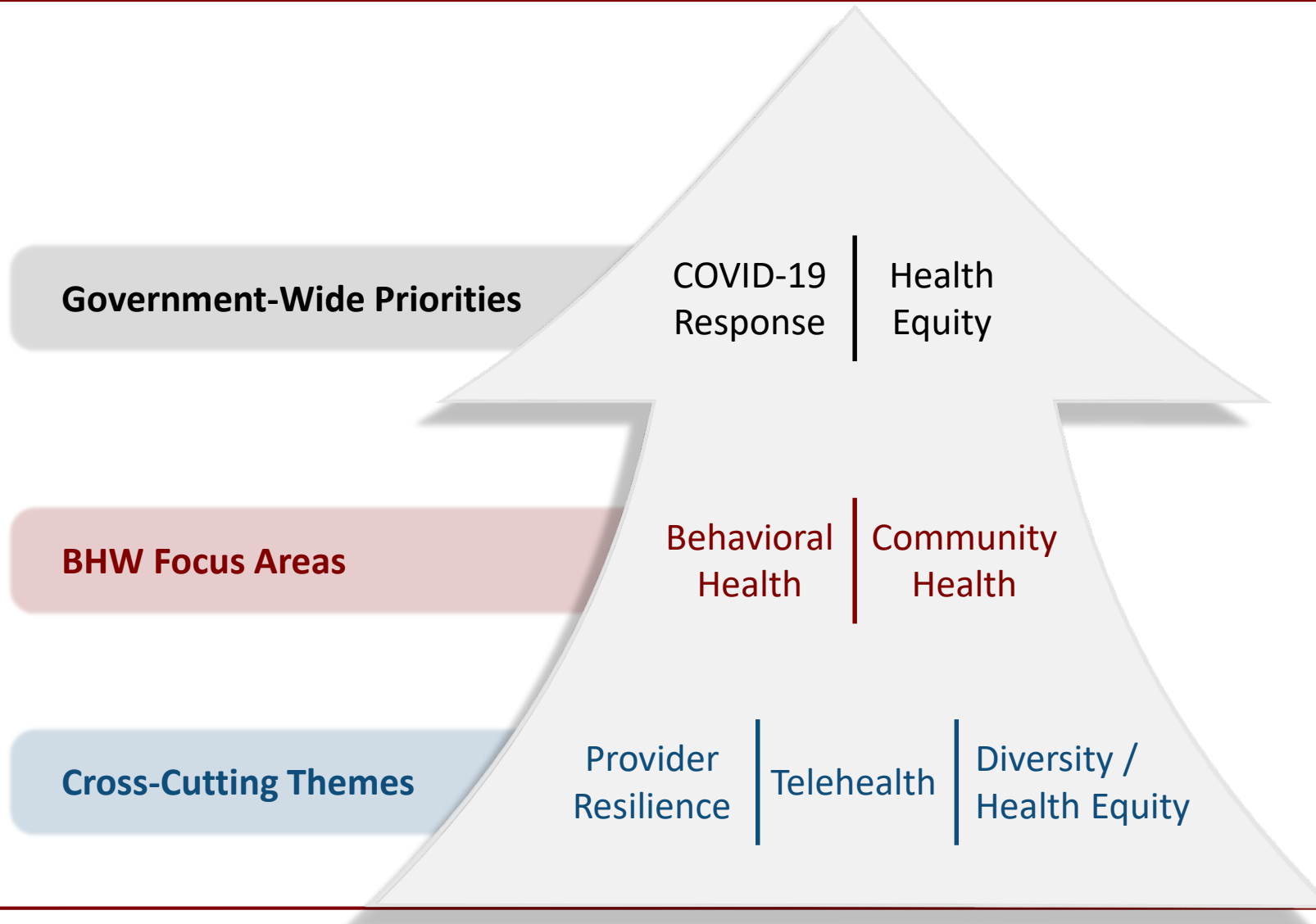
- Improving and Expanding Access to Care and Treatments for COVID-19
- Establishing the COVID-19 Pandemic Testing Board and Ensuring a Sustainable Public Health Workforce for COVID-19 and Other Biological Threats
- Ensuring a Data-Driven Response to COVID-19 and Future High-Consequence Public Health Threats

## Equity

- Ensuring an Equitable Pandemic Response and Recovery



# BHW Focus Areas (2021-2022)



# Looking Ahead

## OPPORTUNITIES



Health Center  
Training Readiness



Clinician  
Well-Being

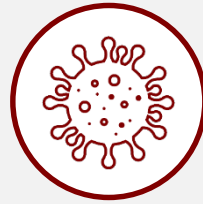


Maternal  
Health



Workforce  
Coordination

## CHALLENGES



COVID-19



Community  
Needs



MCTA  
Criteria



HPSA  
Update & Scoring

# Questions

---



# Contact Us

---

Luis Padilla, MD

Associate Administrator

Bureau of Health Workforce (BHW)

Health Resources and Services Administration (HRSA)

Website: [www.bhw.hrsa.gov](http://www.bhw.hrsa.gov)



# Connect with HRSA

Learn more: [HRSA.gov](https://www.hrsa.gov)

Sign up for HRSA eNews: 

Follow us: 