

# Long-Term Follow-Up in Newborn Screening: An Update on ACMG's Work on the NBSTRN and NCC

Amy Brower, PhD  
Program Manager, NBSTRN and NCC





# Presentation Overview

- Background
- ACMG Coordinating Centers
- Current Efforts
- Case Studies
- Discussion



# Goal of Newborn Screening

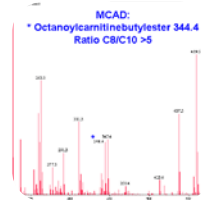
- Early detection, diagnosis, and intervention can prevent death or disability and enable children to reach their full potential
- Lifelong treatment in most cases
- Today's focus is on long-term follow-up



Prenatal Education



Screening



Diagnosis and Short-Term Follow-Up



Clinical Care and Long-Term Follow-Up



# H.R. 1281 (113<sup>th</sup>): Newborn Screening Saves Lives Reauthorization of 2014

- Section 3: Extends through FY2019 a grant program to evaluate the effectiveness of screening, counseling, or health care services in reducing the morbidity and mortality caused by heritable disorders in newborns and children. Expands the program to include evaluation of health outcomes through adolescence and best practices for timely screening of newborns.
- Section 9: Authorizes the Secretary to expand the Hunter Kelly Newborn Screening Research Program to: (1) provide research and data for newborn conditions under review by the Advisory Committee to be added to the Recommended Uniform Screening Panel, and (2) conduct pilot studies on conditions recommended by the Advisory Committee to ensure that screenings are ready for nationwide implementation.

ONE HUNDRED THIRTEENTH CONGRESS OF THE UNITED STATES OF AMERICA

AT THE SECOND SESSION

Begun and held at the City of Washington on Friday, the third day of January, two thousand and fourteen

**H. R. 1281**

**AN ACT**

To amend the Public Health Service Act to reauthorize programs under part A of title XI of such Act.



# Advisory Committee on Heritable Disorders in Newborns and Children

- Provides guidance to reduce the morbidity and mortality associated with heritable disorders, with a special emphasis on those conditions detectable through newborn screening.
- Identified key features and defined the major overarching questions to be answered to assure newborn screening is meeting its goal of achieving the best quality outcome for the affected children and families.

## Long-term follow-up after diagnosis resulting from newborn screening: Statement of the US Secretary of Health and Human Services' Advisory Committee on Heritable Disorders and Genetic Diseases in Newborns and Children

Alex R. Kemper, MD, MPH<sup>1</sup>, Coleen A. Boyle, PhD<sup>2</sup>, Javier Aceves, MD<sup>3</sup>, Denise Dougherty, PhD<sup>4</sup>, James Figge, MD, MBA<sup>5</sup>, Jill L. Fisch<sup>6</sup>, Alan R. Hinman, MD, MPH<sup>7</sup>, Carol L. Greene, MD<sup>8</sup>, Christopher A. Kus, MD, MPH<sup>9</sup>, Julie Miller, BS<sup>10</sup>, Derek Robertson, MBA, JD<sup>11</sup>, Brad Therrell, PhD<sup>12</sup>, Michele Lloyd-Puryear, MD, PhD<sup>13</sup>, Peter C. van Dyck, MD, MPH<sup>13</sup>, and R. Rodney Howell, MD<sup>14</sup>

The US Secretary of Health and Human Services' Advisory Committee on Heritable Disorders and Genetic Diseases in Newborns and Children provides guidance to reduce the morbidity and mortality associated with heritable disorders, with a special emphasis on those conditions detectable through newborn screening. Although long-term follow-up is necessary to maximize the benefit of diagnosis through newborn screening, such care is variable and inconsistent. To begin to improve long-term follow-up, the Advisory Committee has identified its key features, including the assurance and provision of quality chronic disease management, condition-specific treatment, and age-appropriate preventive care throughout the lifespan of affected individuals. There are four components central to achieving long-term follow-up: care coordination through a medical home, evidence-based treatment, continuous quality improvement, and new knowledge discovery. *Genet Med* 2008;10(4):259–261.

**Key Words:** neonatal screening, comprehensive health care, guideline

## What questions should newborn screening long-term follow-up be able to answer? A statement of the US Secretary for Health and Human Services' Advisory Committee on Heritable Disorders in Newborns and Children

Cynthia F. Hinton, PhD, MPH<sup>1</sup>, Lisa Feuchtbaum, DrPH, MPH<sup>2</sup>, Christopher A. Kus, MD, MPH<sup>3</sup>, Alex R. Kemper, MD, MPH<sup>4</sup>, Susan A. Berry, MD<sup>5</sup>, Jill Levy-Fisch, BA<sup>6</sup>, Julie Luedtke, BS<sup>7</sup>, Celia Kaye, MD, PhD<sup>8</sup>, and Coleen A. Boyle, PhD, MS<sup>1</sup>

**Abstract:** The US Secretary of Health and Human Services' Advisory Committee on Heritable Disorders in Newborns and Children provides guidance on reducing the morbidity and mortality associated with heritable disorders detectable through newborn screening. Efforts to systematically evaluate health outcomes, beyond long-term survival, with a few exceptions, are just beginning. To facilitate these nascent efforts, the US Secretary of Health and Human Services' Advisory Committee on Heritable Disorders in Newborns and Children initiated

nated effort to improve tracking and monitoring of healthcare delivery (e.g., services used, clinical care received, and health-related outcomes). Efforts to systematically evaluate health outcomes, beyond long-term survival, with a few exceptions, are just beginning. To facilitate these nascent efforts, the US Secretary of Health and Human Services' Advisory Committee on Heritable Disorders in Newborns and Children (SACHDNC) initiated a project to define the major overarching questions to





# Statement on Long-Term Follow-Up

Assure the best possible outcome for individuals with disorders identified through newborn screening

## Key Features

Quality chronic disease management

Condition-specific treatment

Age-appropriate preventive care throughout the lifespan

## Central Components

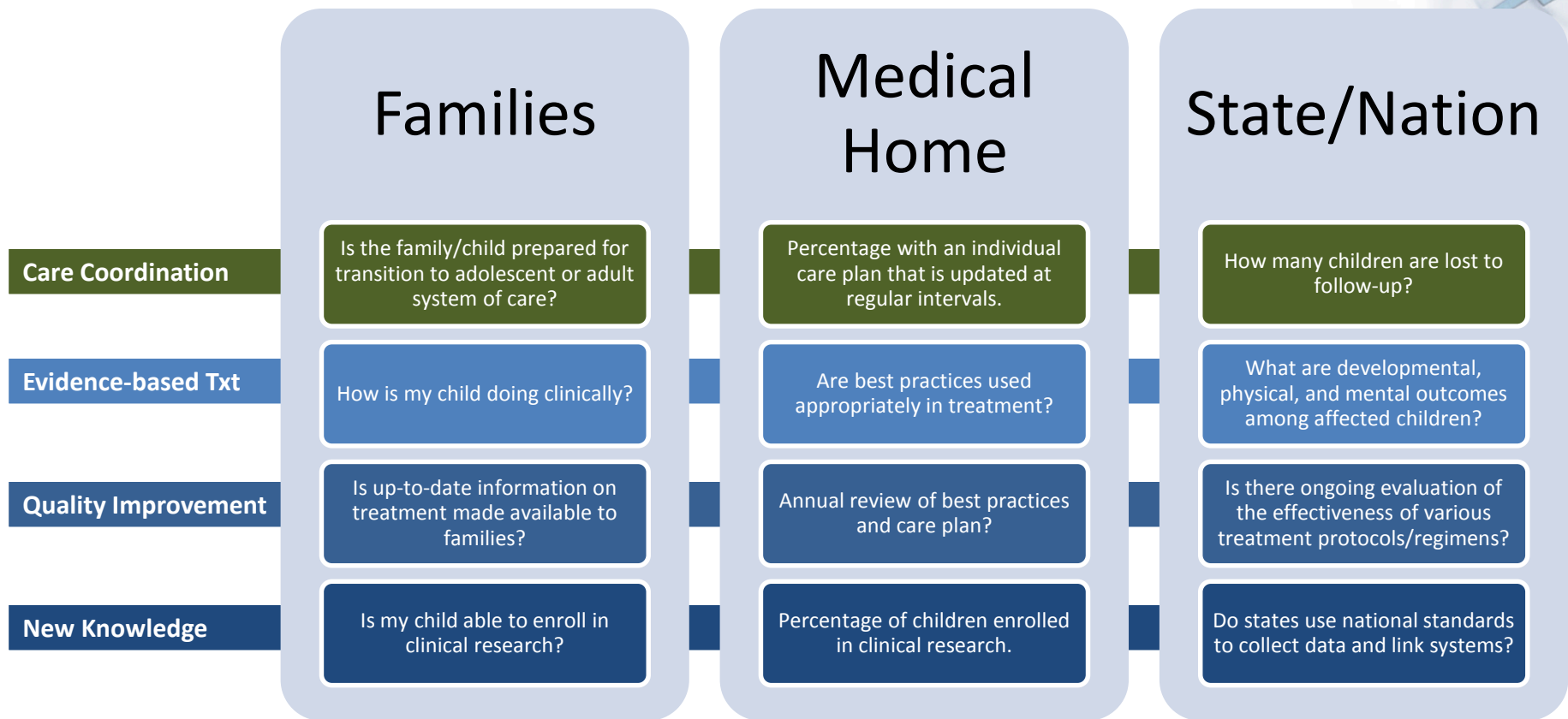
Care coordination through a medical home

Evidence-based treatment

Continuous quality improvement

New knowledge discovery

# Overarching Questions



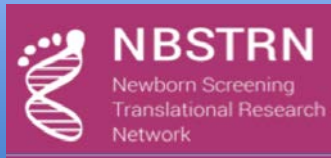
# Presentation Overview

- Background
- **ACMG Coordinating Centers**
- Current Efforts
- Case Studies
- Discussion



# ACMG Coordinating Centers

## NBSTRN



- NICHD Contract – Established 2009
- Current Funding 5 Years – Through 2018
- Improve the health outcomes of newborns with genetic or congenital disorders by means of an infrastructure that allows investigators access to robust resources for newborn screening research.

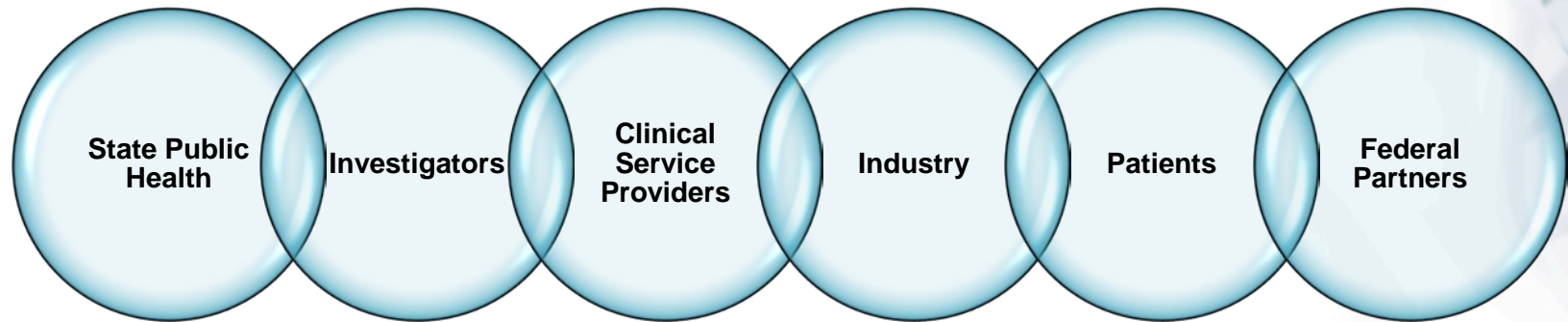
## NCC



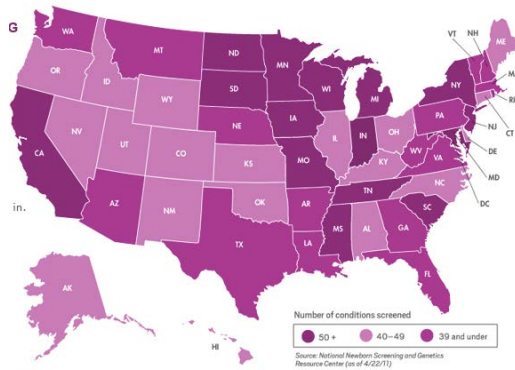
- HRSA – Established 2004
- Current Funding 2 Years – Through 2017
- Strengthen and support the genetics and newborn screening capacity of the states, to improve the availability, accessibility, and quality of genetic services and resources for individuals having, or at risk for, genetic conditions and their families across the lifespan.

# Key Considerations in Newborn Screening

## Bridging Between Diverse Stakeholders



## Begins in State Public Health Newborn Screening Programs



- Controlled through State Departments of Health
- Requires working with 50+ independent entities
- Chronic conditions requiring life-long medical care
- Care received in diverse settings
- Majority are rare or very rare
- Lack of natural history studies
- Incomplete understanding of genomic contributions

# Presentation Overview

- Background
- ACMG Coordinating Centers
- **Current Efforts**
- Case Studies
- Discussion

# Development of LTFU Tools

## Joint Committee

- Common Data Elements (CDEs)
- RUSP Conditions
- Subject Matter Experts
- Applicable for Research and Public Health

## NBSTRN

- Informatics Infrastructure
- Disease Specific and Candidate Conditions CDEs
- Clinical Integration Workgroup
- Pilots and Grantees

## NCC

- Public Health Focus
- Leveraging the Regional Genetics Collaboratives
- NCC/RC LTFU Data Workgroup
- Pilots

# Development of LTFU Tools

## Joint Committee

- Common Data Elements (CDEs)
- RUSP Conditions
- Subject Matter Experts
- Applicable for Research and Public Health

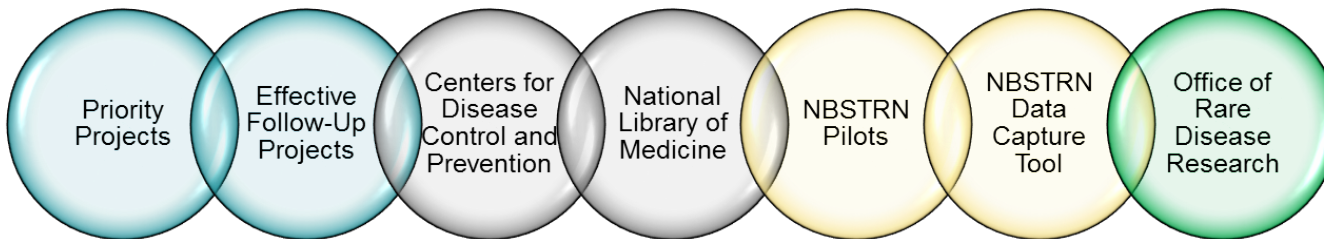
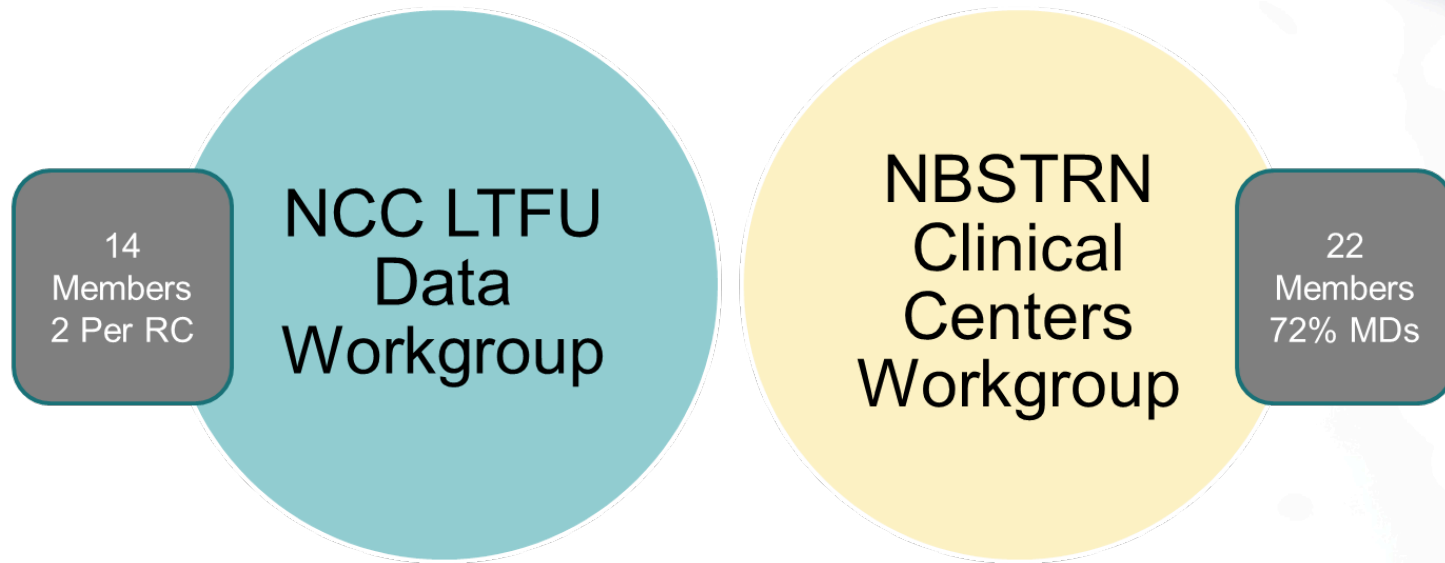
## NBSTRN

- Informatics Infrastructure
- Disease Specific and Candidate Conditions CDEs
- Clinical Integration Workgroup
- Pilots and Grantees

## NCC

- Public Health Focus
- Leveraging the Regional Genetics Collaboratives
- NCC/RC LTFU Data Workgroup
- Pilots

# Makeup of Joint Committee



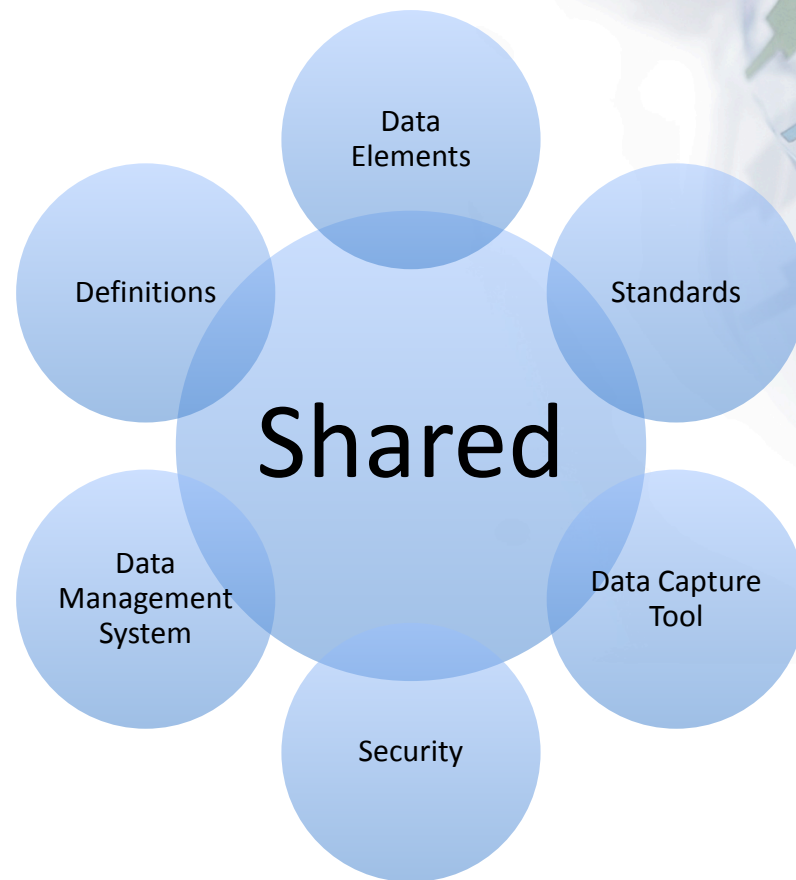
# Key Components

## Objectives

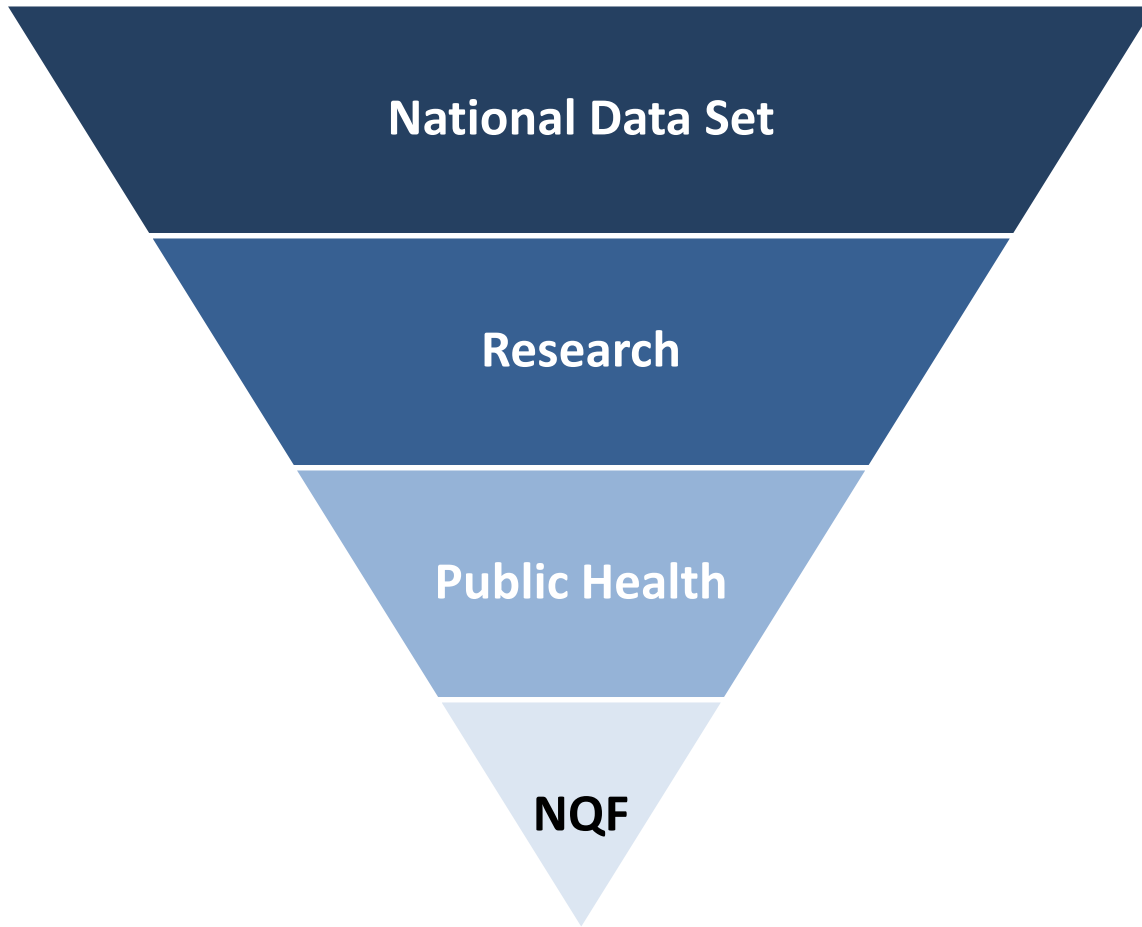
- Enable investigators and public health teams to systematically collect, analyze and share data across the research community

## Resource

- Information system using consensus standardized data sets, case report forms, secure data collection, sharing and management



# Potential Uses of Data Sets





# Use Cases

## Investigator – New & Existing Technologies, Novel Treatment & Management Strategies

- Enable Novel Statistically Robust Proposals

Describe the clinical course of NBS identified conditions in which patients are asymptomatic.

## Grantee – New & Existing Technologies, Novel Treatment & Management Strategies

- Accelerate & Facilitate Research

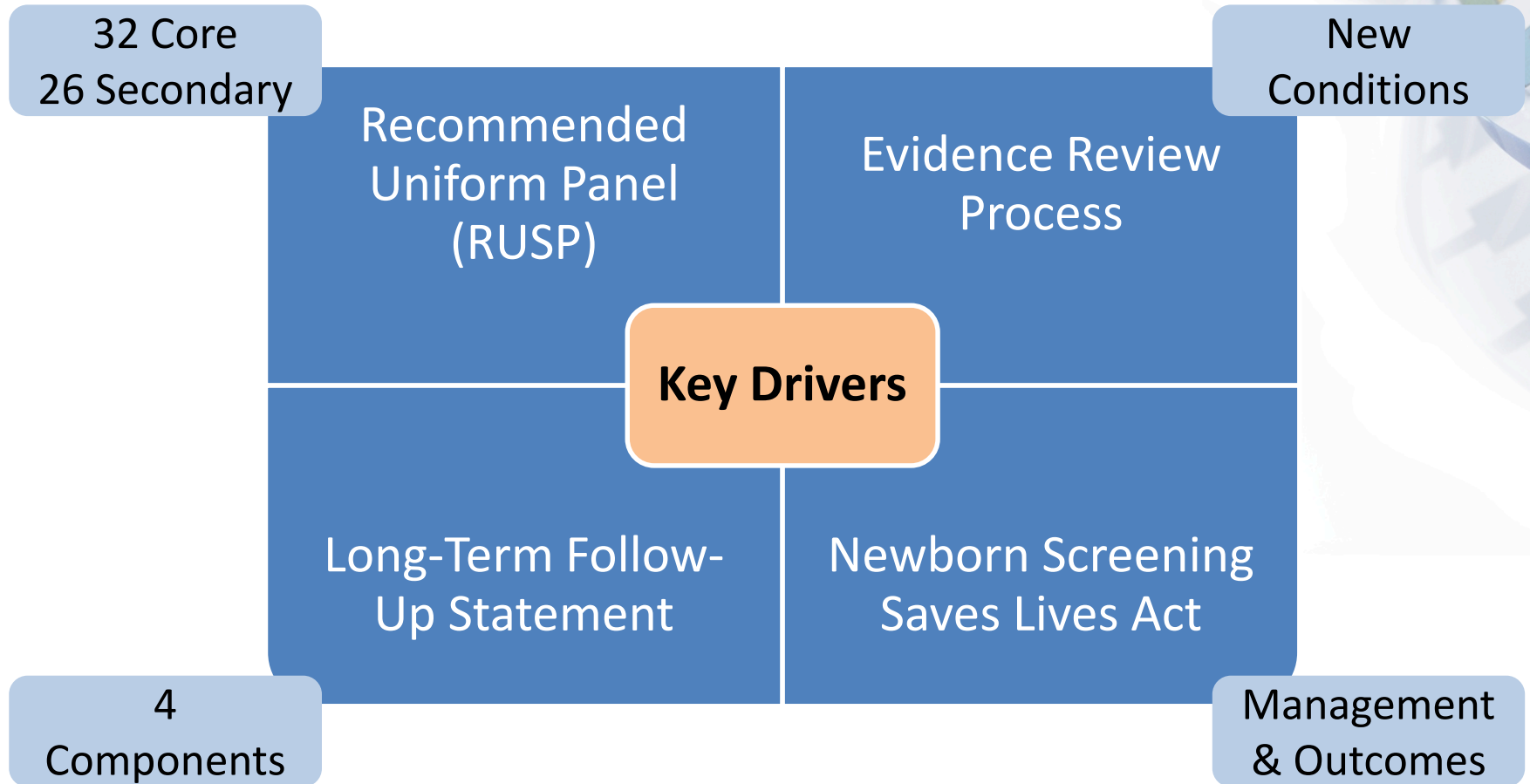
What is the relationship between CFTR genotypes and lung function in adolescence for newborn screen identified cystic fibrosis patients?

## Public Health Partner – Service Delivery & Quality Assurance/Improvement

- Implement Technologies & Assess Health Outcomes for Novel Treatments

Describe the relationship between service delivery and treatment methods to define optimal follow-up care plans for children with MCAD.

# Scope of Work



# Common Data Elements (CDEs)

NBS Conditions

RUSP

Candidates

Development

Consensus

Grantee

Grantee

Consensus

# Current Efforts

## Joint Committee

- Common Data Elements (CDEs)
- RUSP Conditions
- Subject Matter Experts
- Applicable for Research and Public Health

## NBSTRN

- Informatics Infrastructure
- Disease Specific and Candidate Conditions CDEs
- Clinical Integration Workgroup
- Pilots and Grantees

## NCC

- Public Health Focus
- Leveraging the Regional Genetics Collaboratives
- NCC/RC LTFU Data Workgroup
- Pilots

# Facilitating Newborn Screening Research

- The NBSTRN is an NICHD funded contract awarded to ACMG (September 2013 - September 2018)



- The NBSTRN will develop, maintain, administer and enhance resources to support investigators with projects related to newborn screening for:
  - New technologies
  - New Conditions
  - New treatments and management approaches

# NBSTRN Tools



VRDDBS

- The **Virtual Repository of Dried Blood Spots (VRDDBS)** is an open-source, web-based tool that enables NBS researchers to search over 2.9 million DBS from participating states.



R4S

- The **Region 4 Stork** tool is a web-based application for the collection and reporting of analytical results. It has been widely adopted into the routine practice of newborn screening laboratories worldwide.



LPDR

- The **Longitudinal Pediatric Data Resource (LPDR)** is a secure informatics system designed to enable enhanced data collection, sharing, management and analysis for conditions identified as part of newborn screening or for conditions that may benefit from newborn screening.

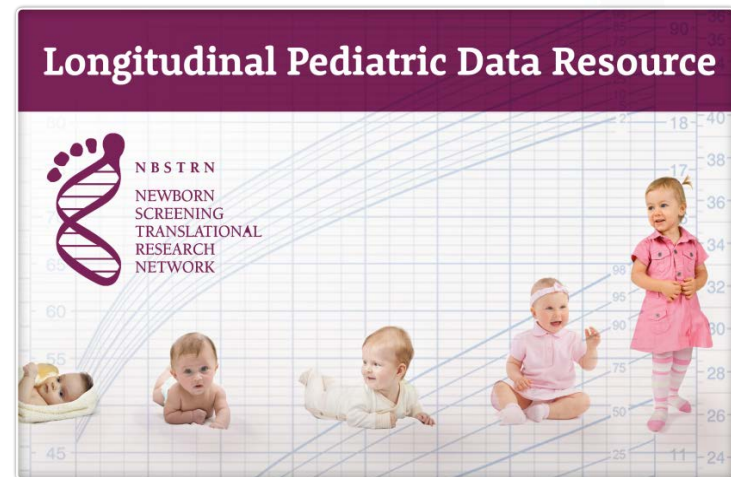


ELSI  
Advantage

- The **ELSI Advantage** is an ethical, legal and social issues resource for NBS researchers. Information on IRBs, NBS related FAQs and templates to customize your own consent forms.

# Longitudinal Pediatric Data Resource (LPDR) Mission

- The majority of NBS conditions are rare and translating new discoveries into clinical practice requires prospective collection, aggregation and sharing of health information
- To facilitate this translation the NBSTRN developed the Longitudinal Pediatric Data Resource which includes:
  - Data Sets
  - Data Almanac
  - Informatics System
  - Discovery Interface





## Welcome

The Longitudinal Pediatric Data Resource (LPDR) is a suite of information technology tools to support newborn screening researchers. The LPDR enables longitudinal collection of clinical and research information within a secure environment that provides permission-based access and data sharing to research teams. Leading clinicians and public health professionals have created a series of questions and answers organized into common data elements (CDEs) to capture important information about each of the conditions that are part of routine newborn screening, the Recommended Uniform Screening Panel (RUSP), or are candidates for newborn screening.

[Learn More](#)

[Privacy Policy](#)



### Case Report Forms

Download disease specific PDFs containing common data elements



### Data Almanac

Browse available common data elements



### Integrate Genomics

Coming Soon!



### REDCap™ Demo

Try out REDCap using sample forms



### NBSTRN Support

Consult with staff and request a letter of support.



### Request Level 2 Access

Apply for expanded use of the LPDR.

[Plan Your Research](#)

[Collect & Contribute](#)

[Query & Analyze](#)

[Report & Share](#)



2234 CDE's

<p><b>Form</b> ?</p> <p>Demographics <span style="float: right;">x v</span></p> <hr/> <p><b>Condition Category</b> ?</p> <p>Amino acid disorders <span style="float: right;">x v</span></p> <hr/> <p><b>Variable Type</b> ?</p> <p>Core <span style="float: right;">x v</span></p> <hr/> <p><b>Sources</b> ?</p> <p>Select a Source v</p>	<p><b>Section</b> ?</p> <p>Condition</p> <hr/> <p><b>Condition</b> ?</p> <p>Medium-chain acyl-CoA dehydrogenase deficien</p> <hr/> <p><b>Keyword</b> ?</p> <p></p> <hr/> <p><b>Sites</b> ?</p> <p>Select a Site</p>
---	---

Search
Clear
🔊 Provide Feedback to NBSTRN about CDE's

4 CDEs from search criteria

Clear
Saved CDE's

Summary
REDCap

Include branching logic on export

---

**Visit Lab Studies**

- Renal Labs**
  - u\_ren\_24\_cr
  - u\_ren\_24\_cr\_r\_range
  - u\_ren\_24\_cr\_units
  - u\_ren\_24\_cr\_values
  - u\_ren\_gfr
  - u\_ren\_gfr\_r\_range
  - u\_ren\_gfr\_units
  - u\_ren\_gfr\_values
  - u\_ren\_oth\_com
  - u\_ren\_oth\_r\_range
  - u\_ren\_oth\_units
  - u\_ren\_oth\_values
  - u\_ren\_oth
  - u\_renal\_labs
  - u\_ren\_oth\_name
  - u\_ren\_cr
  - u\_ren\_cr\_r\_range
  - u\_ren\_cr\_units
  - u\_ren\_cr\_values
- Chemistry Labs**

# Current Conditions and Cohorts



# Current Consensus and Grantee CDEs

Total  
10,216

Metabolic  
6136

SMA  
1637

LSD 1201

PCH 348

NICU  
405 to 836

NSIGHT  
1702

## Intake

- Demographics
- Family History
- Newborn Screening
- Initial Testing
- Past Health History

## Visit

- Demographics and Family History
- Health History
- Lab Studies
- Findings
- Management and Treatment – Nutrition
- Management and Treatment – Pharmacotherapy
- Other Studies

## Other

- Study Status
- Pregnancy
- Dialysis
- Transplant

# REDCap™ Case Report Forms

## Subject | Longitudinal Care Record

- Intake
- Visit
- Study Status



# Secure Informatics Infrastructure

## Level 1

Public Resources – Low Restriction

VRDBS Search

LPDR Index

Data Almanac - CDEs

Case Report Forms

## Level 2

Highly Restricted

Grantee Controlled Data

Grantee Generated Published Data

Case Level Data

# Current Efforts

## Joint Committee

- Common Data Elements (CDEs)
- RUSP Conditions
- Subject Matter Experts
- Applicable for Research and Public Health

## NBSTRN

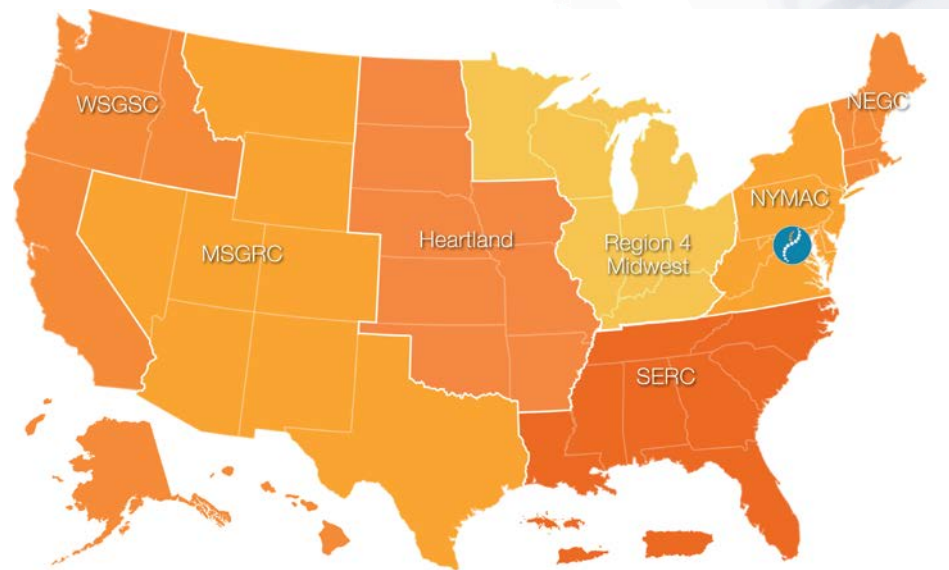
- Informatics Infrastructure
- Disease Specific and Candidate Conditions CDEs
- Clinical Integration Workgroup
- Pilots and Grantees

## NCC

- Public Health Focus
- Leveraging the Regional Genetics Collaboratives
- NCC/RC LTFU Data Workgroup
- Pilots

# NCC LTFU Effort

- The ideal implementation of LTFU in state NBS programs residing in state health departments requires the adoption of a common set of questions and answers that will be collected across all conditions.
- A set of common data elements (CDEs) enables the aggregation, analysis, sharing and reporting of information across conditions and state NBS programs.



# Public Health Focus

## Goals

Coordinate and accelerate LTFU efforts within public health

Develop CDEs for public health

Pilot public health data set

Identify barriers

## Tool

Consensus Questions

LPDR Overlay

Overarching Questions

## Pilot

LPDR Public Health

Recruit within RCs

Identify implementation issues

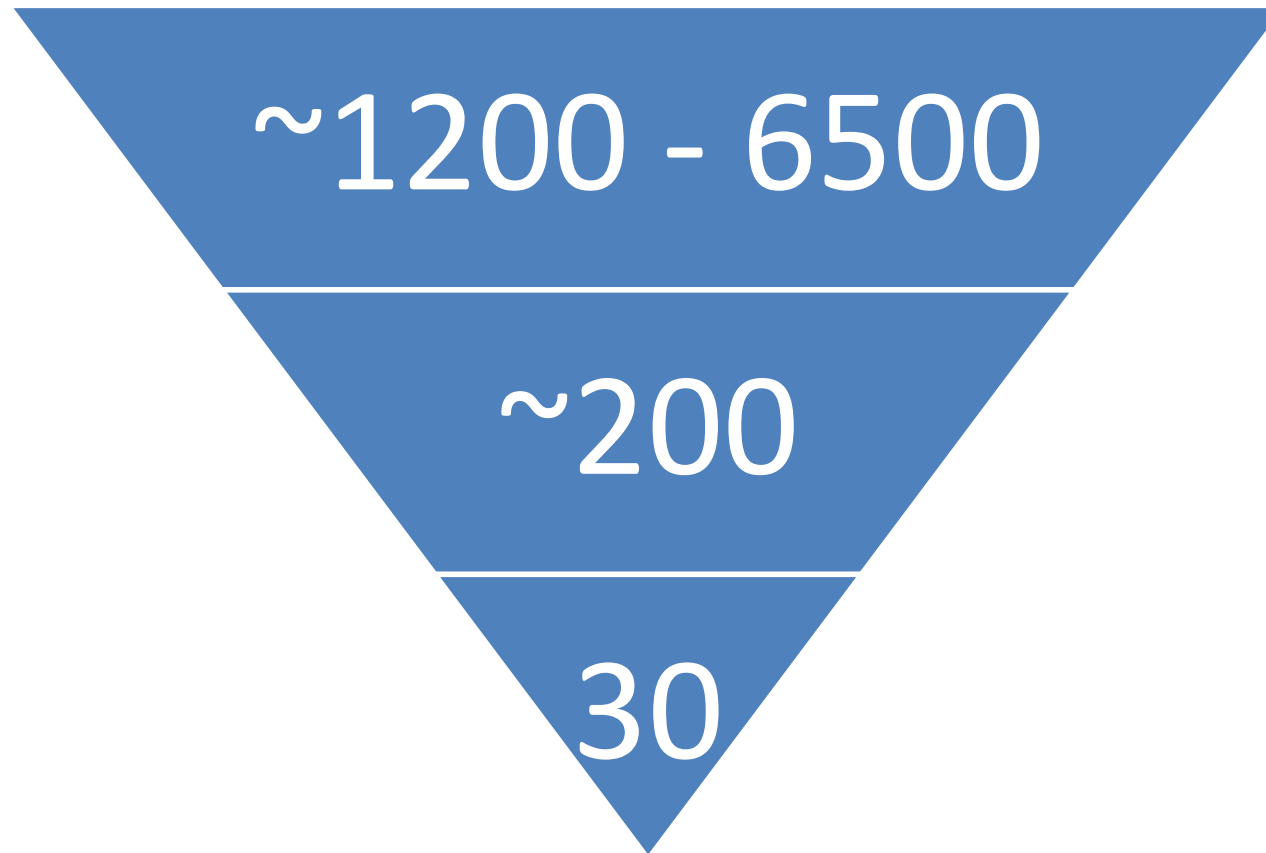
Inform future efforts



# Consensus Questions

- 1 Is the disorder on the newborn panel?
- 2 What percent of children with disorders remain in care between the ages of one and five years old?
- 3 What percent become lost to follow-up?
- 4 What percent of parents refuse treatment?
- 5 What percent died due to problems associated with this disorder?
- 6 What percent were determined not to need ongoing treatment?  
What percent of children (combined or by specific type of disease) had age appropriate developmental
- 7 status with respect to speech, physical development, mental/cognitive development, gross motor and fine motor development?
- 8 What percent of children were severely delayed with respect to any of the developmental measures and what year of life did the delays become apparent?
- 9 What percent of patients experienced symptoms associated with their disorder and at what age did the symptoms become apparent?
- 10 In any given year, what percent of children experienced the loss of skills they had previously acquired?
- 11 What percent of children had no hospitalizations or emergency room visits in the previous year of life?
- 12 What disorders are associated with the greatest number of hospitalizations and emergency room visits due to disorder-related complications?
- 13 What disorders are associated with the highest utilization of metabolic center visits?
- 14 What percent of children are receiving a multidisciplinary team of services, including nutritional counseling, health education and social services?

# LPDR Overlay



**CDE  
s**

**Uniform**

**Public  
Health**

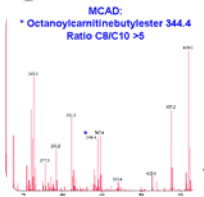
# Source of Desired Information



Prenatal Education



Screening



Diagnosis and Short-Term Follow-Up



Clinical Care and Long-Term Follow-Up



# Presentation Overview

- Background
- ACMG Coordinating Centers
- Current Efforts
- **Case Studies**
- Discussion

# Case Studies

## SCID

- Clinical Heterogeneity
- Diagnoses
- Follow-Up

## Genomics

- NICU
- Health Population

# Case Studies

## SCID

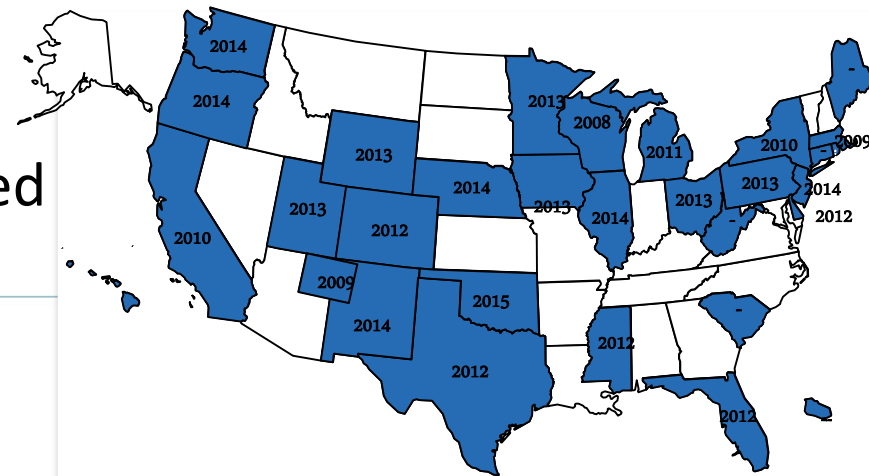
- Clinical Heterogeneity
- Diagnoses
- Follow-Up

## Genomics

- NICU
- Health Population

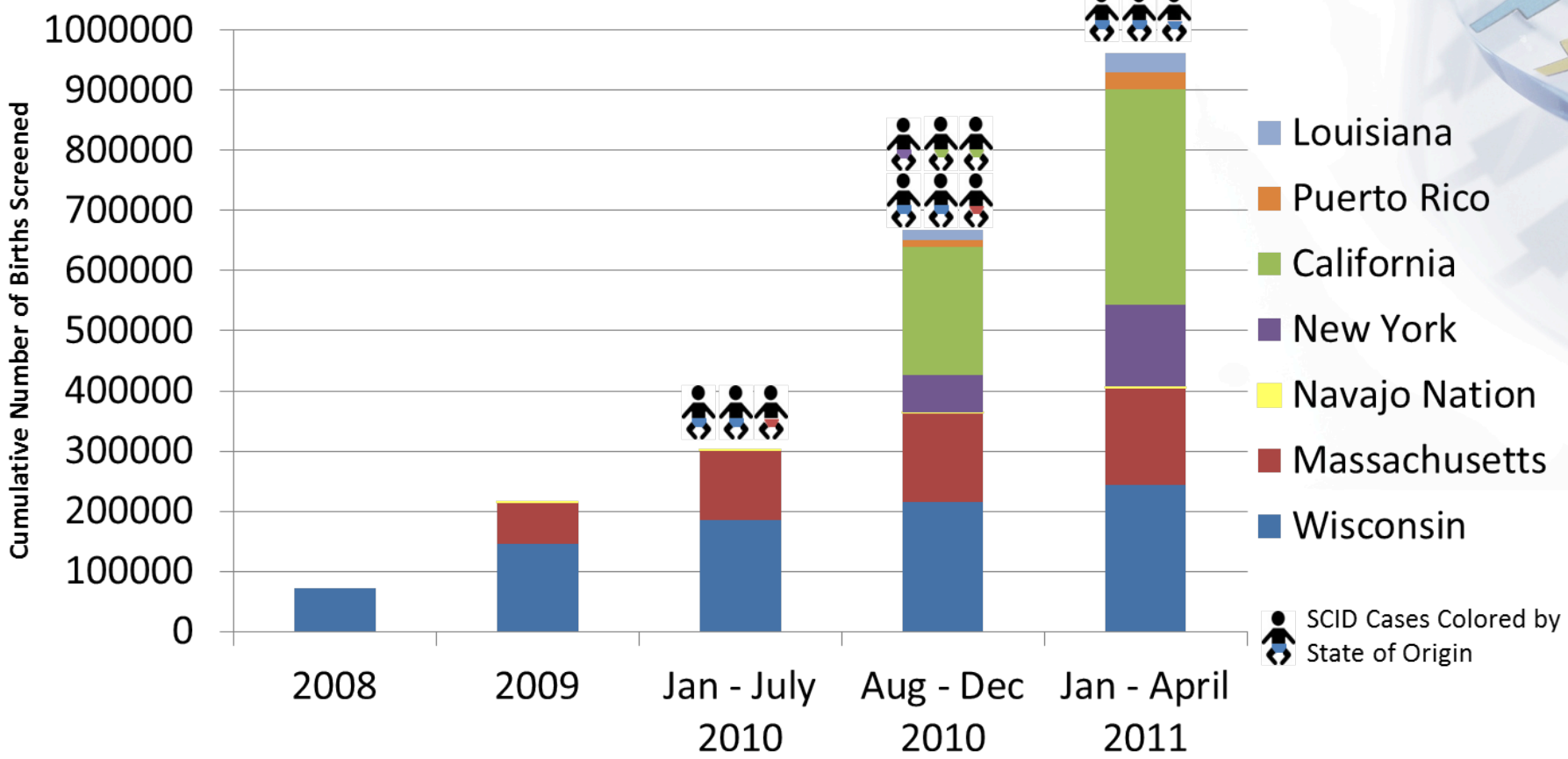
# Severe Combined Immune Deficiency

- SCID and related T-cell lymphocyte deficiencies are a group of disorders
- Characterized by lack of functioning immune system
- Classic SCID is universally fatal in the first two years without immune reconstitution
- Early diagnosis is essential for lifesaving treatment
- Recommended to the RUSP January 2010
- Adopted to the RUSP May 2010
- Currently ~70% of newborns screened





# Pilots of Newborn Screening





# Utilization of NBSTRN Tools



## Core

- Coordinate meetings of SCID experts in NBS, diagnosis, and management
- Translate findings to state programs, clinicians and other stakeholders
- Host monthly stakeholder calls and webinars



## VRDBS

- Mechanism to make screen positive samples available to researchers
- Samples = 173
- Clinical diagnoses = 6



## LPDR

- Clinical case report forms and system to collect information
- Diagnosis categories for screen positive
- Screened = 3,030,083 Cases = 52



## R4S

- Analytical and clinical validation of screening technology
- Data elements captured = 28
- Submitters = 83 Cases = 177

# Report of 11 Programs

## Objectives

- To present data from a spectrum of SCID newborn screening programs, establish population-based incidence for SCID and other conditions with T-cell lymphopenia, and document early institution of effective treatments.

## Results

- Screening detected 52 cases of typical SCID, leaky SCID, and Omenn syndrome, affecting 1 in 58 000 infants.
- Survival of SCID-affected infants through their diagnosis and immune reconstitution was 87%(45/52), 92%(45/49) for infants who received transplantation, enzyme replacement, and/or gene therapy

## Conclusions

- Newborn screening in 11 programs in the United States identified SCID in 1 in 58 000 infants, with high survival. The usefulness of detection of non-SCID T-cell lymphopenias by the same screening remains to be determined.

Original Investigation

## Newborn Screening for Severe Combined Immunodeficiency in 11 Screening Programs in the United States

Antonia Kwan, PhD, MRCPCH; Roshini S. Abraham, PhD; Robert Currier, PhD; Amy Brower, PhD; Karen Andruszewski, BS; Jordan K. Abbott, MD; Mei Baker, MD; Mark Ballow, MD; Louis E. Bartoshek, MD; Vincent R. Bonagura, MD; Francisco A. Bonilla, MD, PhD; Charles Brokopp, DrPH; Edward Brooks, MD; Michele Caggana, ScD; Jocelyn Celestin, MD; Joseph A. Church, MD; Anne Marie Comeau, PhD; James A. Connelly, MD; Morton J. Cowan, MD; Charlotte Cunningham-Rundles, MD; Trivikram Dasu, PhD; Nina Dave, MD; Maria T. De La Morena, MD; Ulrich Duffner, MD; Chin-To Fong, MD; Lisa Forbes, MD; Debra Freedenberg, MD; Erwin W. Gelfand, MD; Jaime E. Hale, BS; I. Celine Hanson, MD; Beverly N. Hay, MD; Diana Hu, MD; Anthony Infante, MD, PhD; Daisy Johnson, BSN; Neena Kapoor, MD; Denise M. Kay, PhD; Donald B. Kohn, MD; Rachel Lee, PhD; Heather Lehman, MD; Zhili Lin, PhD; Fred Lorey, PhD; Aly Abdel-Mageed, MD, MBA; Adrienne Manning, BS; Sean McGhee, MD; Theodore B. Moore, MD; Stanley J. Naides, MD; Luigi D. Notarangelo, MD; Jordan S. Orange, MD; Sung-Yun Pai, MD; Matthew Porteus, MD, PhD; Ray Rodriguez, MD, JD, MPH, MBA; Neil Romberg, MD; John Routes, MD; Mary Ruehle, MS; Arye Rubenstein, MD; Carlos A. Saavedra-Matiz, MD; Ginger Scott, RN; Patricia M. Scott, MT; Elizabeth Secord, MD; Christine Serogy, MD; William T. Shearer, MD, PhD; Subhadra Siegel, MD; Stacy K. Silvers, MD; E. Richard Stiehm, MD; Robert W. Sugerman, MD; John L. Sullivan, MD; Susan Tanksley, PhD; Millard L. Tierce IV, DO; Tracy Tabor, MD, PhD; Paul Tiedt, MD; Brooke Walker, MD, PhD; William H. Wainwright, MD; John F. Walter, MD, PhD; Richard J. Whitley, MD, PhD; James H. Wright, MD, PhD; Robert A. Zurbrugg, MD, PhD

**IMPORTANCE** Newborn screening for severe combined immunodeficiency (SCID) using assays to detect T-cell receptor excision circles (TRECs) began in Wisconsin in 2008, and SCID was added to the national recommended uniform panel for newborn screened disorders in 2010. Currently 23 states, the District of Columbia, and the Navajo Nation conduct population-wide newborn screening for SCID. The incidence of SCID is estimated at 1 in 100 000 births.

**OBJECTIVES** To present data from a spectrum of SCID newborn screening programs, establish population-based incidence for SCID and other conditions with T-cell lymphopenia, and document early institution of effective treatments.

**DESIGN** Epidemiological and retrospective observational study.

**SETTING** Representatives in states conducting SCID newborn screening were invited to submit their SCID screening algorithms, test performance data, and deidentified clinical and laboratory information regarding infants screened and cases with nonnormal results. Infants born from the start of each participating program from January 2008 through the most recent evaluable date prior to July 2013 were included. Representatives from 10 states plus the Navajo Area Indian Health Service contributed data from 3 030 083 newborns screened with a TREC test.

**MAIN OUTCOMES AND MEASURES** Infants with SCID and other diagnoses of T-cell lymphopenia were classified. Incidence and, where possible, etiologies were determined. Interventions and survival were tracked.

**RESULTS** Screening detected 52 cases of typical SCID, leaky SCID, and Omenn syndrome, affecting 1 in 58 000 infants (95% CI, 1/46 000-1/80 000). Survival of SCID-affected infants through their diagnosis and immune reconstitution was 87% (45/52), 92% (45/49) for infants who received transplantation, enzyme replacement, and/or gene therapy. Additional interventions for SCID and non-SCID T-cell lymphopenia included immunoglobulin infusions, preventive antibiotics, and avoidance of live vaccines. Variations in definitions and follow-up practices influenced the rate of detection of non-SCID T-cell lymphopenias.



LPRD



R4S

# Current Case Studies

## SCID

- Clinical Heterogeneity
- Diagnoses
- Follow-Up

## Genomics

- NICU
- Healthy Population

# NEWBORN SCREENING IN THE GENOMIC ERA: SETTING A RESEARCH AGENDA



5635 Fishers Lane, Rockville, MD  
December 13–14, 2010

SPONSORED BY:

*Evotice Kennedy Shriver* National Institute of Child Health and Human Development (NICHD)  
National Human Genome Research Institute (NHGRI)  
NIH Office of Rare Diseases Research (ORDR)



“Genomic sequencing has potential to diagnose a vast array of disorders and conditions at the very start of life. But the ability to decipher an individual’s genetic code rapidly also brings with it a host of clinical and ethical issues, which is why it is important that this program explores the trio of technical, clinical, and ethical aspects of genomics research in the newborn period.”

Alan Guttmacher, MD, Director of NICHD



# Four Pilot Projects

Brigham and  
Women's Hospital  
and Boston  
Children's Hospital

Impact and  
usefulness of  
genomic data  
throughout  
infancy and  
childhood

Children's Mercy  
Hospital, Kansas  
City

Benefits and  
risks of using  
genomic  
information in  
the NICU

University of  
California, San  
Francisco

Exome  
sequencing for  
RUSP and  
candidate  
conditions

University of North  
Carolina at Chapel  
Hill

Examine  
exomes of  
infants with  
known genetic  
conditions and  
determine  
best way to  
return results  
to doctors and  
parents

# Goals of Collecting CDEs

- Types of research
  - Gene discovery
  - Phenotype spectrum of rare variants
  - Modifying genes for metabolic conditions
  - PGx studies
- Research across NSIGHT
  - Across all groups
  - Between 2 or 3 groups
- Research across NBSTRN
- Contribute to other efforts – ClinGen/ClinVar

# 4 Different Study Designs

- BWH/BCH/BCM
  - NICU population
  - Healthy newborns
- Children's Mercy
  - NICU population
- UNC
  - Affected cohort with diagnosed metabolic conditions
  - Healthy newborns
- USF
  - De-identified newborn blood spots linked to clinical data
  - Patients suspected of having a primary immunodeficiency not identified by newborn screening

# Approach to CDE Sharing

- “Above and below the line” approach to identify CDEs
  - Shared with NBSTRN LPDR
  - Shared among NSIGHT Teams
  - NSIGHT Team only



# Acknowledgements

*Eunice Kennedy Shriver* National Institute of Child  
Health and Human Development, National  
Institutes of Health

NBSTRN -- HHSN27520130001C

Maternal and Child Health Bureau/Health  
Resources and Services Administration, Genetic  
Services Branch

NCC -- U22MC24100

# Acknowledgements – Joint Committee

Hans Andersson, MD  
Kathleen Arnos, PhD, FACMG  
Richard Auchus, MD, PhD  
Susan Berry, MD (co-chair)  
Louis Bartoshesky, MD, MPH  
Anne Comeau, PhD  
Patty Duffner, MD  
James Eckman, MD  
Lisa Feuchtbaum, DrPh, MPH  
Debra Freedenberg, MD, PhD  
Nancy Green, MD  
Katharine Harris, MBA

Celia Kaye, MD, PhD  
Dwight Koeberl, MD, PhD  
Stephen LaFranchi, MD  
Jill Levy-Fisch  
Nicola Longo, MD, PhD  
Julie Luedtke  
John Moeschler, MD, MS  
Arti Pandya, MD, MBA  
Jennifer Puck, MD  
Kiki Sarafoglou, MD  
Robert Saul, MD  
Dari Shirazi

Cynthia Hinton, PhD, MPH  
R. Rodney Howell, MD  
Rebecca Goodwin, JD  
Clem McDonald, MD  
Alan Zuckerman, MD  
Swapna Abhyankar, MD  
Carolyn Hoppe, MD  
Stephen Kahler, MD  
Phyllis Speiser, MD  
Janet Thomas, MD  
Rani Singh, PhD, RD, LD  
Kathryn Hassell, MD (co-chair)

# Acknowledgements

- Clinical Integration Group

- Cynthia Powell
- Deborah Garner
- Debra Freedenberg
- Dwight Koeberl
- Janet Thomas
- Kathryn Hassell
- Kathryn Swoboda
- Lisa Feuchtbaum
- Melissa Wasserstein
- Michele Caggana
- Michele Puryear
- Susan Berry
- Thomas Langan
- Tiina Urv

- NCC/RC LTFU Workgroup

- Adrya Stembridge
- Ana H. Morales
- Andrea Lewis
- Beth Hannan
- Christelle Farrow
- Connie Turney
- Ellie Mulcahy
- Gina Gembel
- Janet Thomas
- Jill Shuger
- Kathryn Hassell
- Rani Singh
- Sharmini Rogers (Chair)
- Tony Steyermark



Search  GO

[Advanced Search](#)

HOME | JOIN ACMG | FOUNDATION | LINKS | CALENDAR | STUDENTS | CAREER CENTER | FIND A MEMBER | FIND GENETIC SERVICES | LOGIN | LOGOUT

About ACMG | Newsroom | ACMG Events | Publications | Education | ACMG Products | Resources | Committees | Members Only



Welcome to the  
**American College of Medical Genetics and Genomics**  
The ACMG provides education, resources and a  
voice for the medical genetics profession.



**ACMG**

@TheACMG

American College of Medical Genetics and Genomics (ACMG):  
Translating Genes into Health® #theacmg #ACMGmtg  
Bethesda, MD · <http://www.acmg.net>

# Genetics in Medicine

**abrower@acmg.net**

