



Preventing Child Abuse & Neglect, Achieving Health Equity

A Framework and Strategies for Addressing Inequities in Risk for Violence

Marilyn Metzler, RN, MPH
Division of Violence Prevention/TJFACT

Joanne Klevens, MD, PhD, MPH
Division of Violence Prevention

April 8, 2019

Objectives

1. Introduce a conceptual framework for unmasking and addressing health inequities.
2. Share some examples of how this framework has been used in the Division of Violence Prevention.
3. Discuss one process for changing the narrative around child abuse and neglect.
4. Discuss potential connections to preventing inequities in risk for infant and maternal mortality.

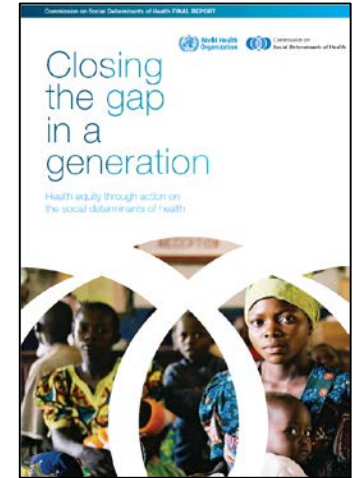
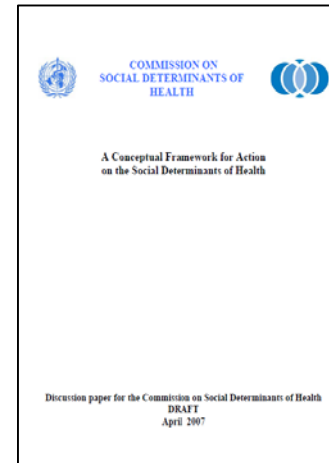
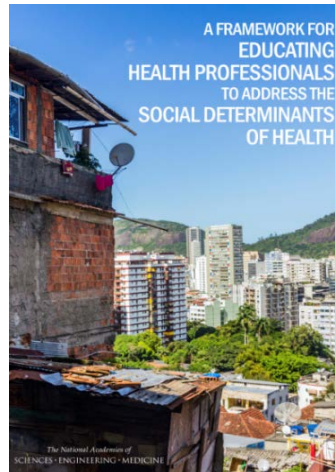
Public Health

Public health is what we, as a society, do collectively to assure the conditions in which (all) people can be healthy.

Institute of Medicine
The Future of Public Health, 1988 & 1997

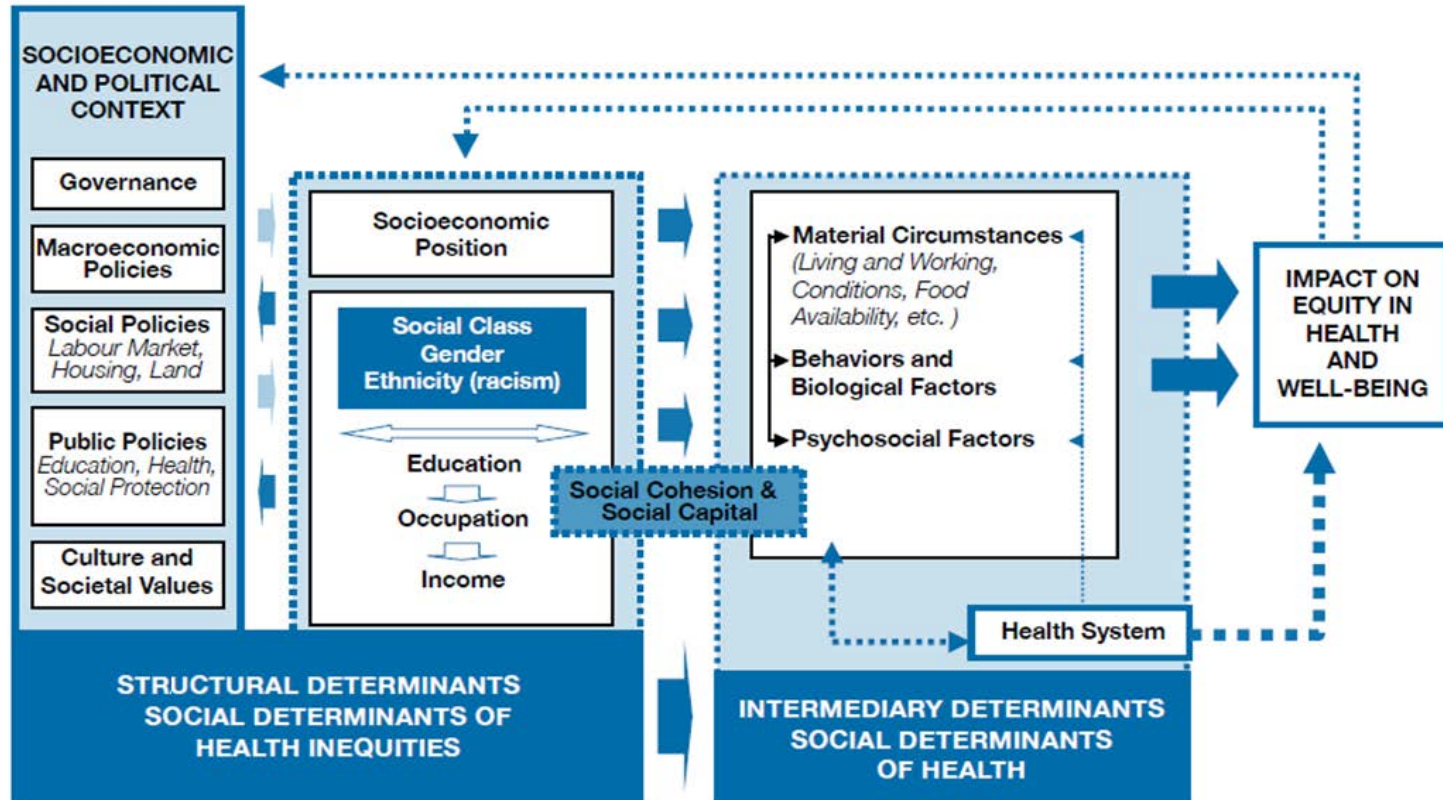
WHO Conceptual Framework on the Social Determinants of Health

- WHO Commission on SDOH, led by Michael Marmot
 - Dr. Bill Foege, Dr. David Satcher
- Extensive literature & programmatic review
- NASEM endorsement



World Health Organization

Conceptual Framework on the Social Determinants of Health



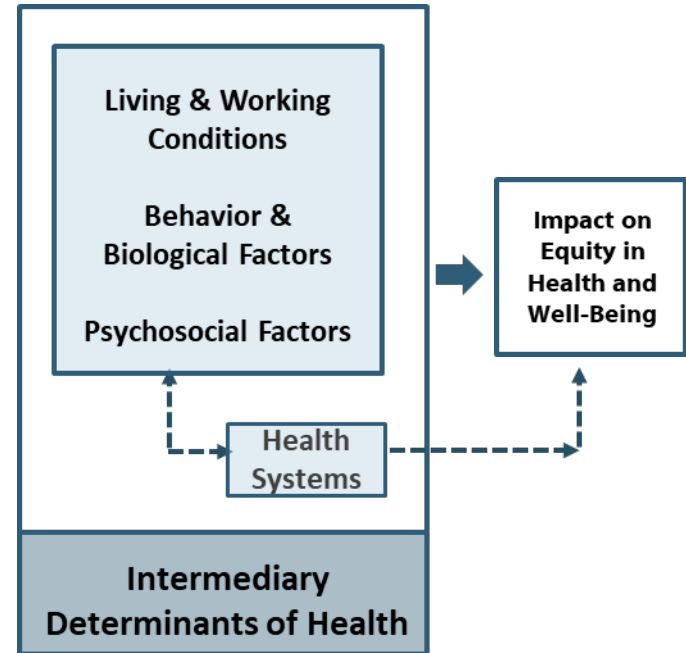
World Health Organization

Conceptual Framework on the Social Determinants of Health

**Impact on
Equity in
Health and
Well-Being**

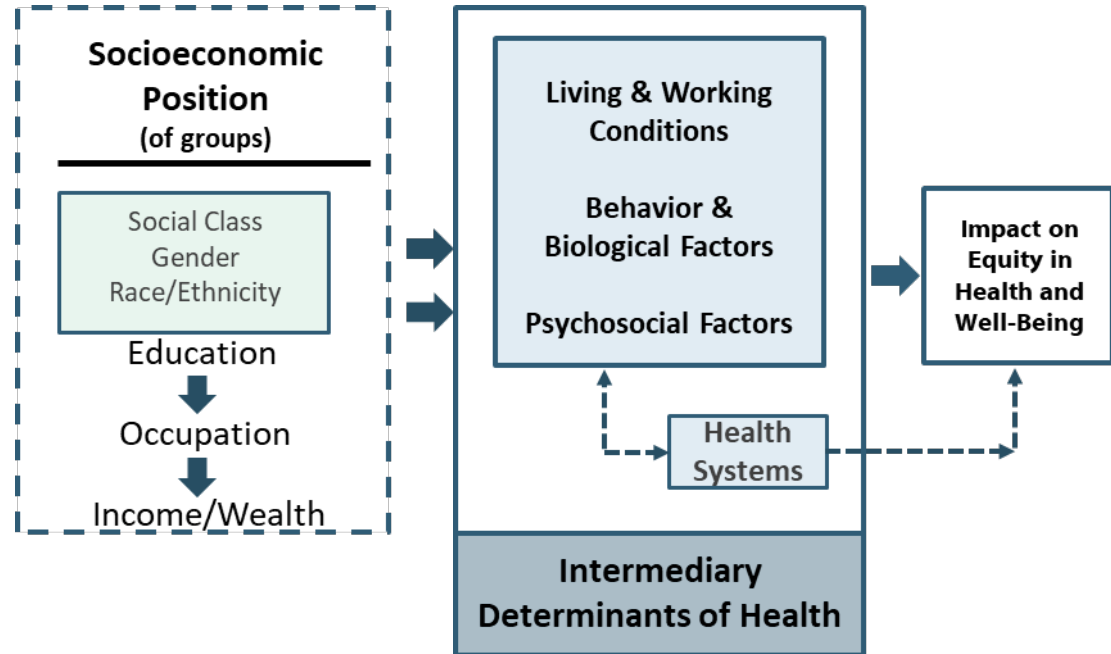
World Health Organization

Conceptual Framework on the Social Determinants of Health



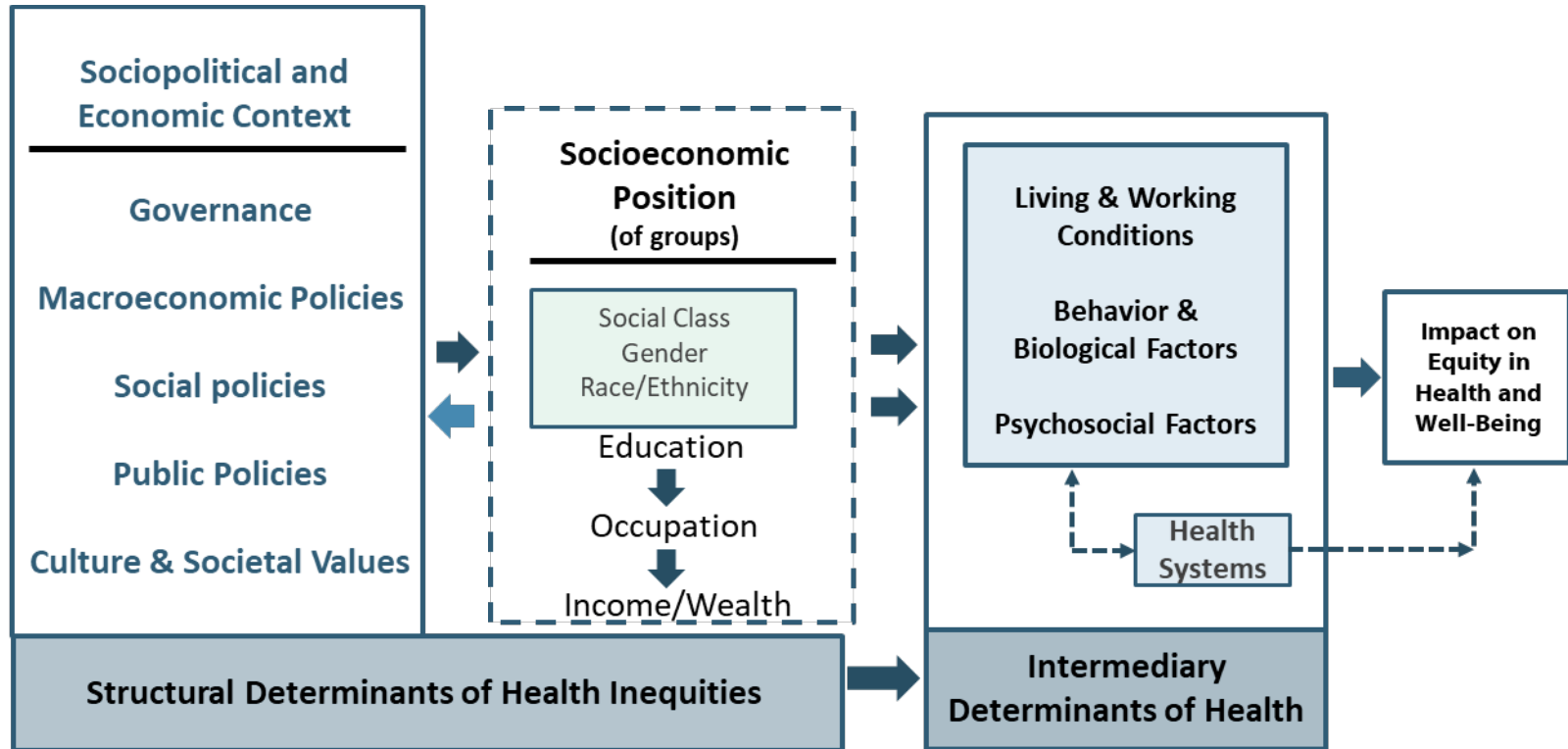
World Health Organization

Conceptual Framework on the Social Determinants of Health



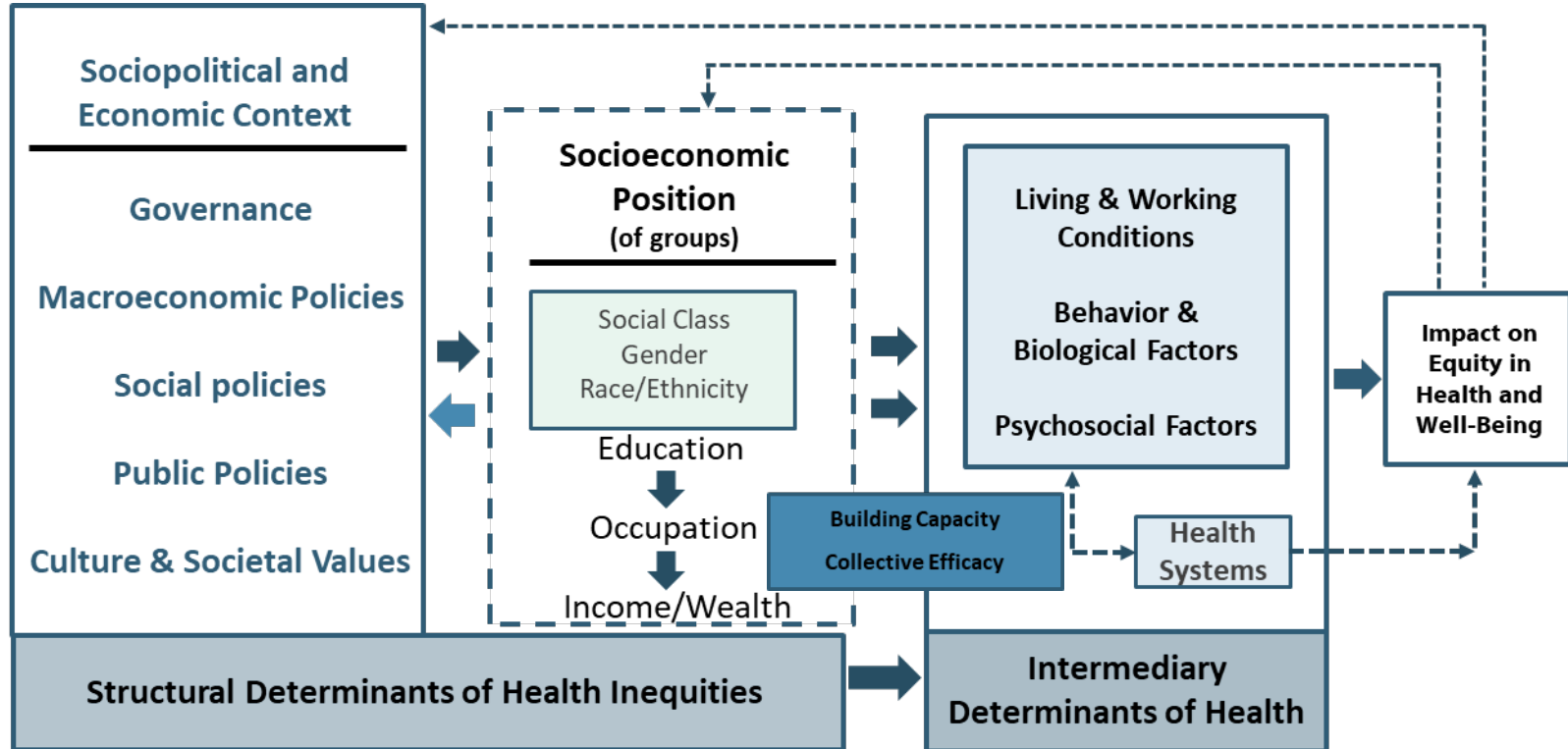
World Health Organization

Conceptual Framework on the Social Determinants of Health



World Health Organization

Conceptual Framework on the Social Determinants of Health

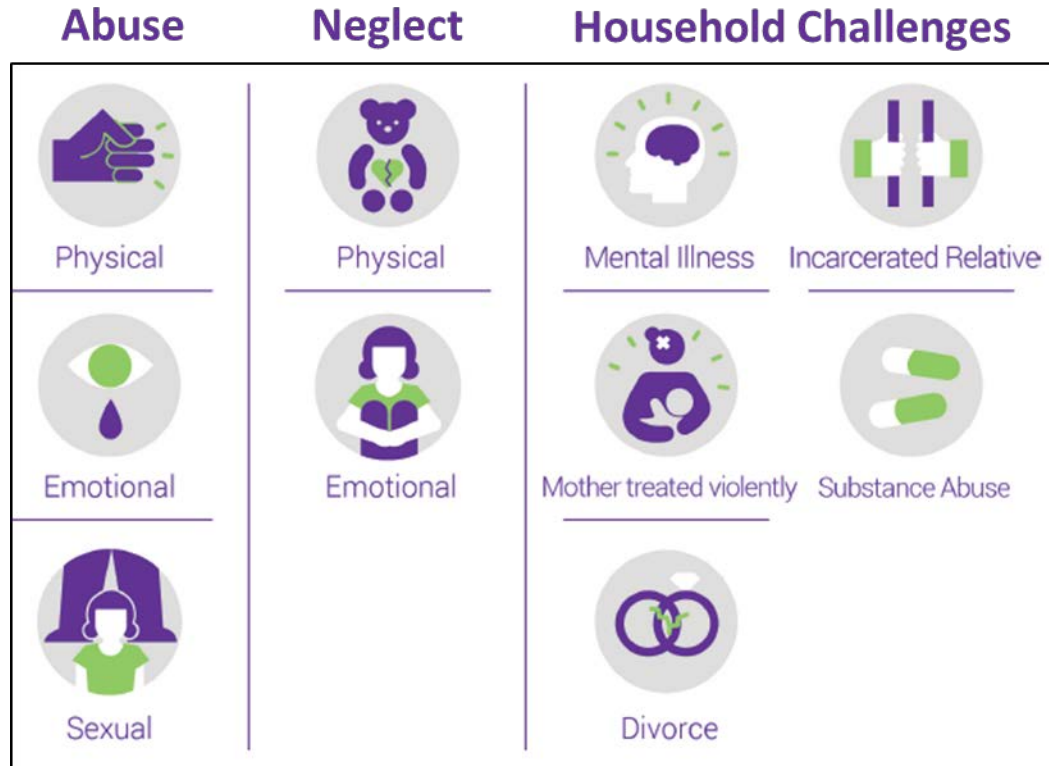


Can use the WHO Framework to:

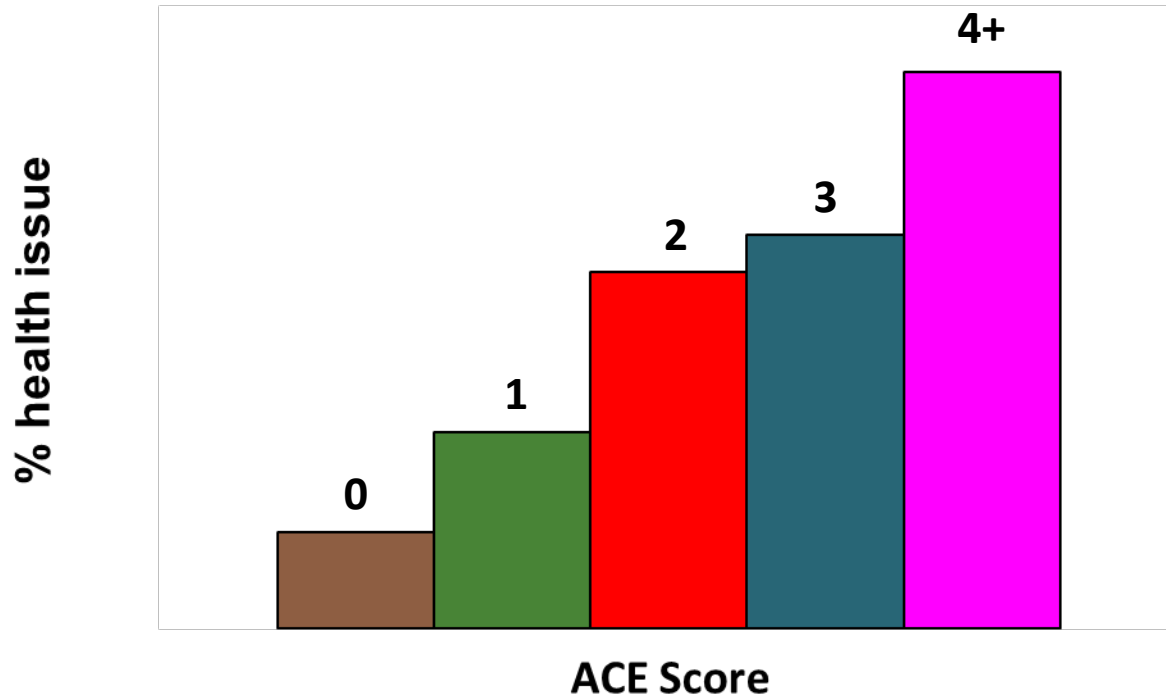
- Develop hypotheses and explanatory pathways
- Identify where you are working
- Set reasonable expectations for outcomes
- Build on existing approaches based on new evidence, new narratives, and new partners

Applying the WHO Framework

Adverse Childhood Experiences (ACEs)



ACEs: 50+ health and life opportunity impacts



Health and Life Opportunities Consequences



Child Abuse and Neglect

Overall rate: 17.2/1000

By Race/Ethnicity:

- 12.6/1000 White
- 24/1000 African American

By SES:

- 4.4/1000 not-low SES
- 22.5/1000 low SES

Sedlak et al. 2010

And so we asked...

Is this something about African American parents and parents living with low incomes?

or

Is this something about the conditions in which African American parents and parents with low incomes are raising their children?

World Health Organization

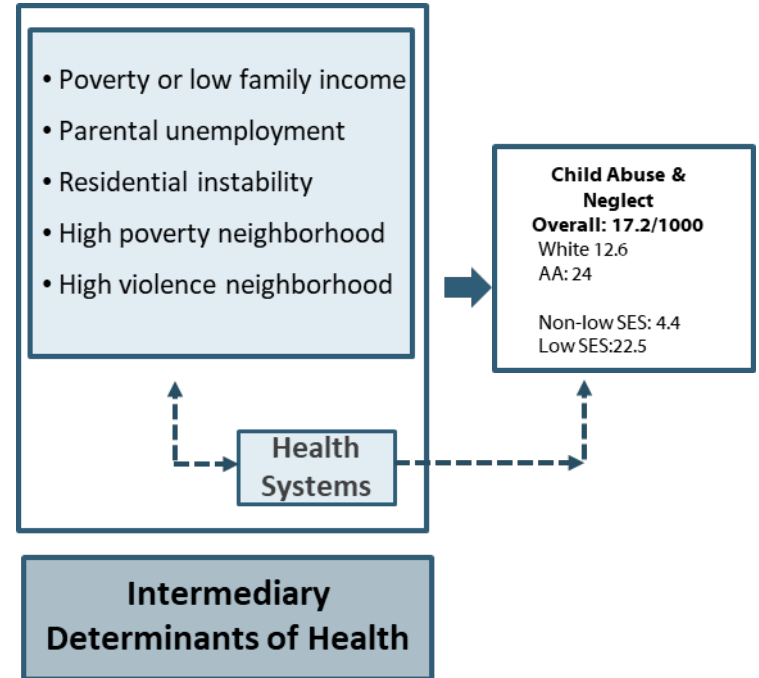
Conceptual Framework on the Social Determinants of Health

**Child Abuse &
Neglect**
Overall: 17.2/1000
White 12.6
AA: 24

Non-low SES: 4.4
Low SES:22.5

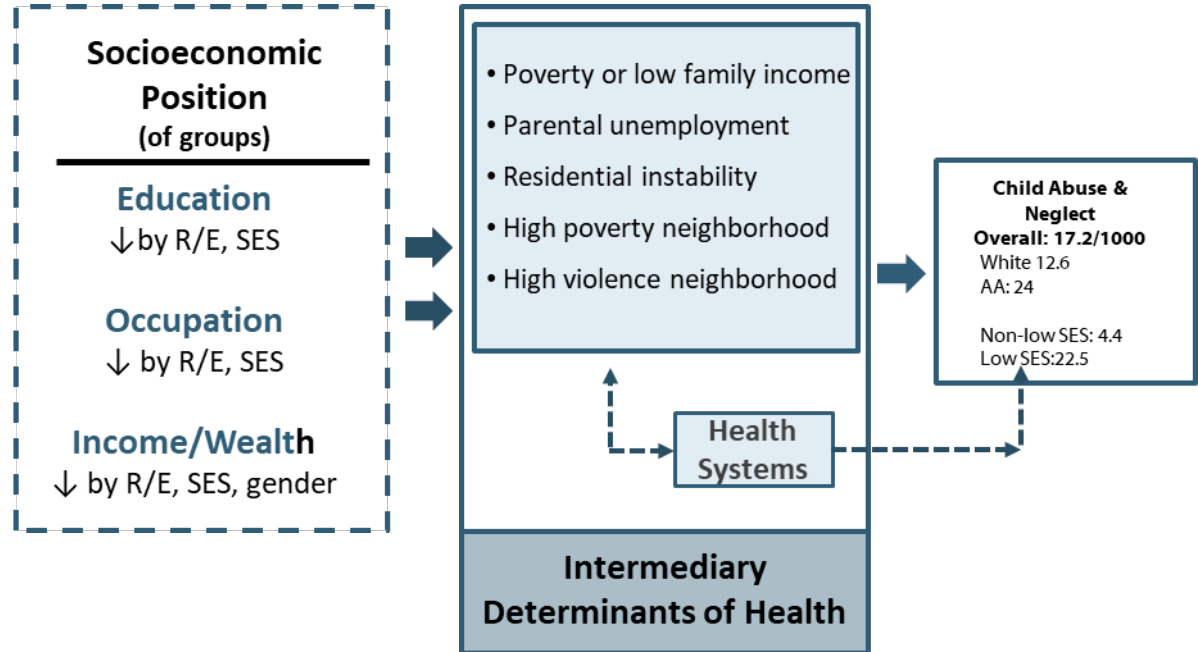
World Health Organization

Conceptual Framework on the Social Determinants of Health



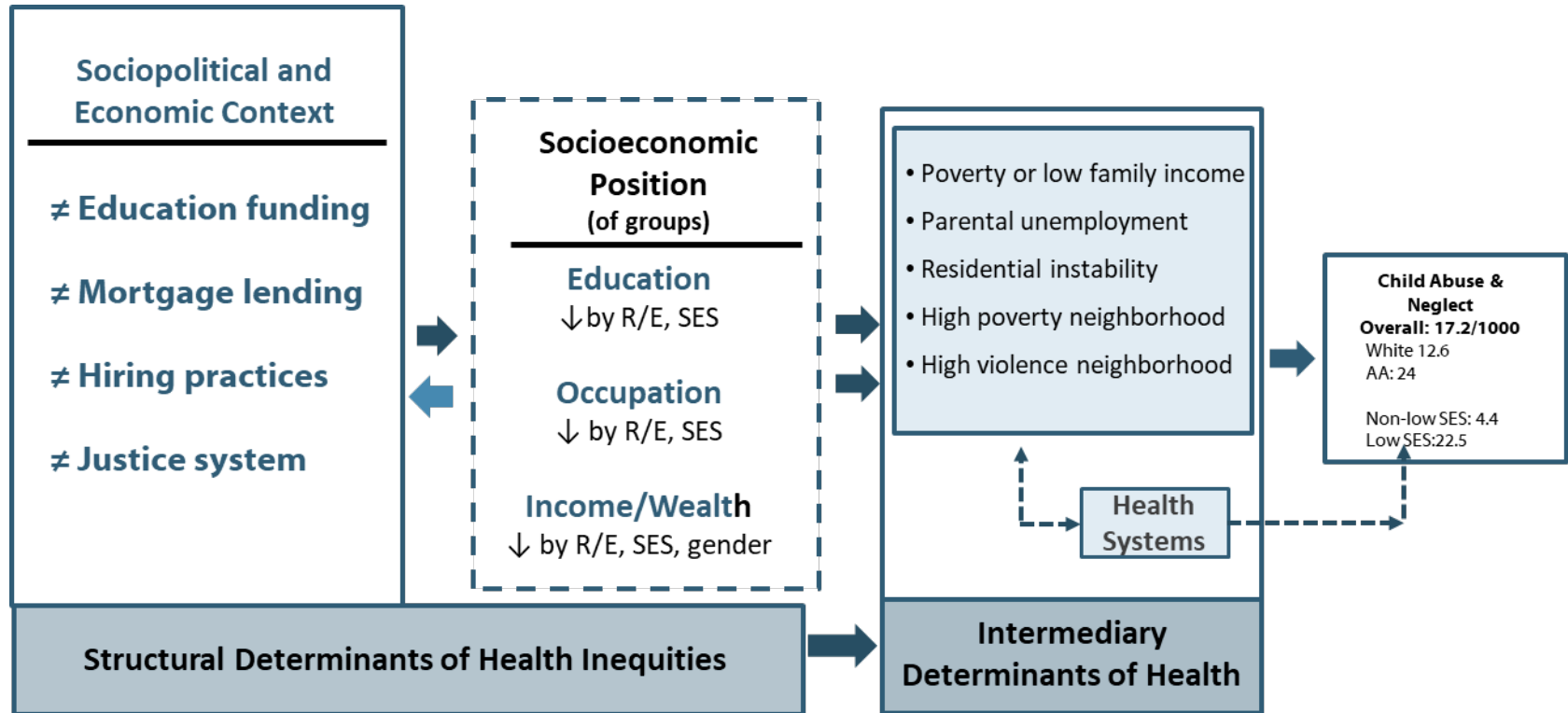
World Health Organization

Conceptual Framework on the Social Determinants of Health



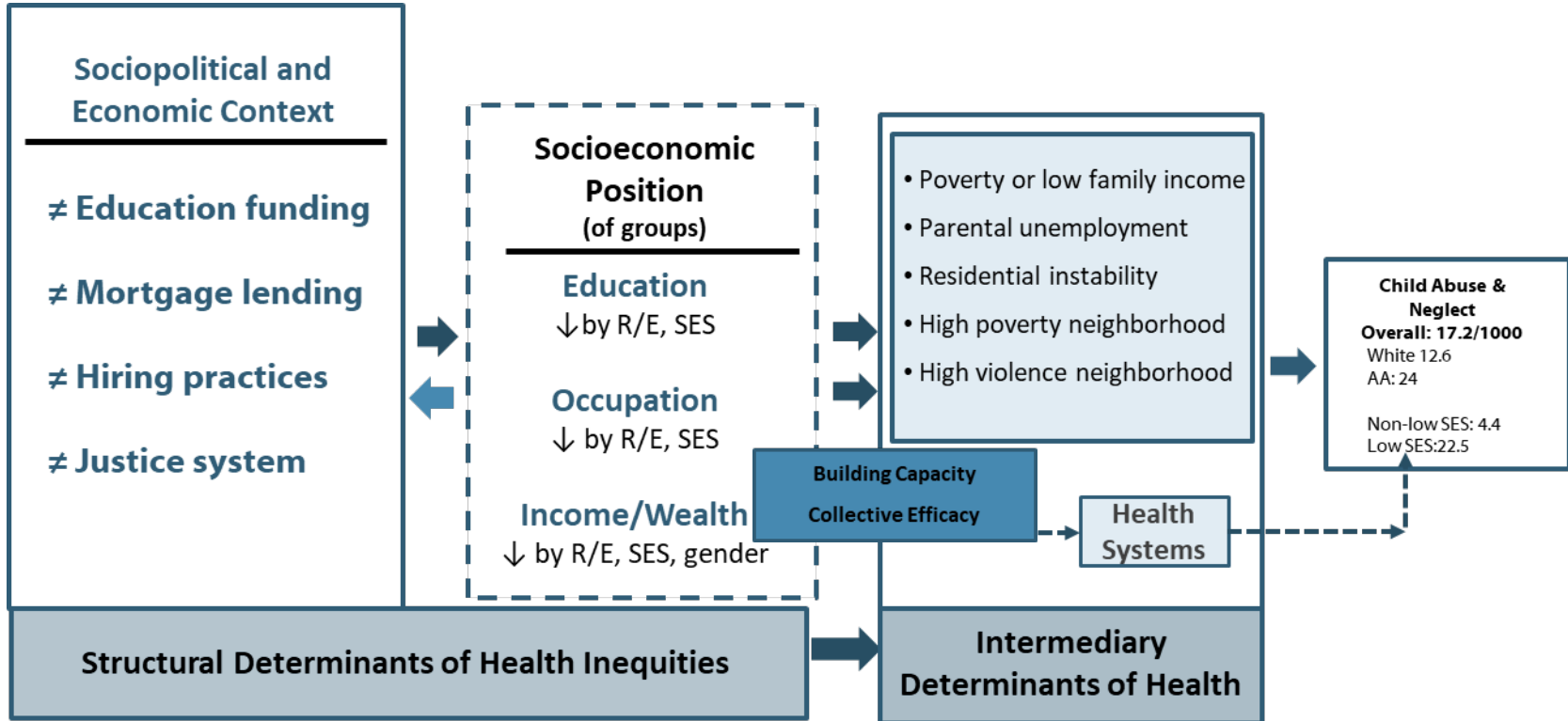
World Health Organization

Conceptual Framework on the Social Determinants of Health

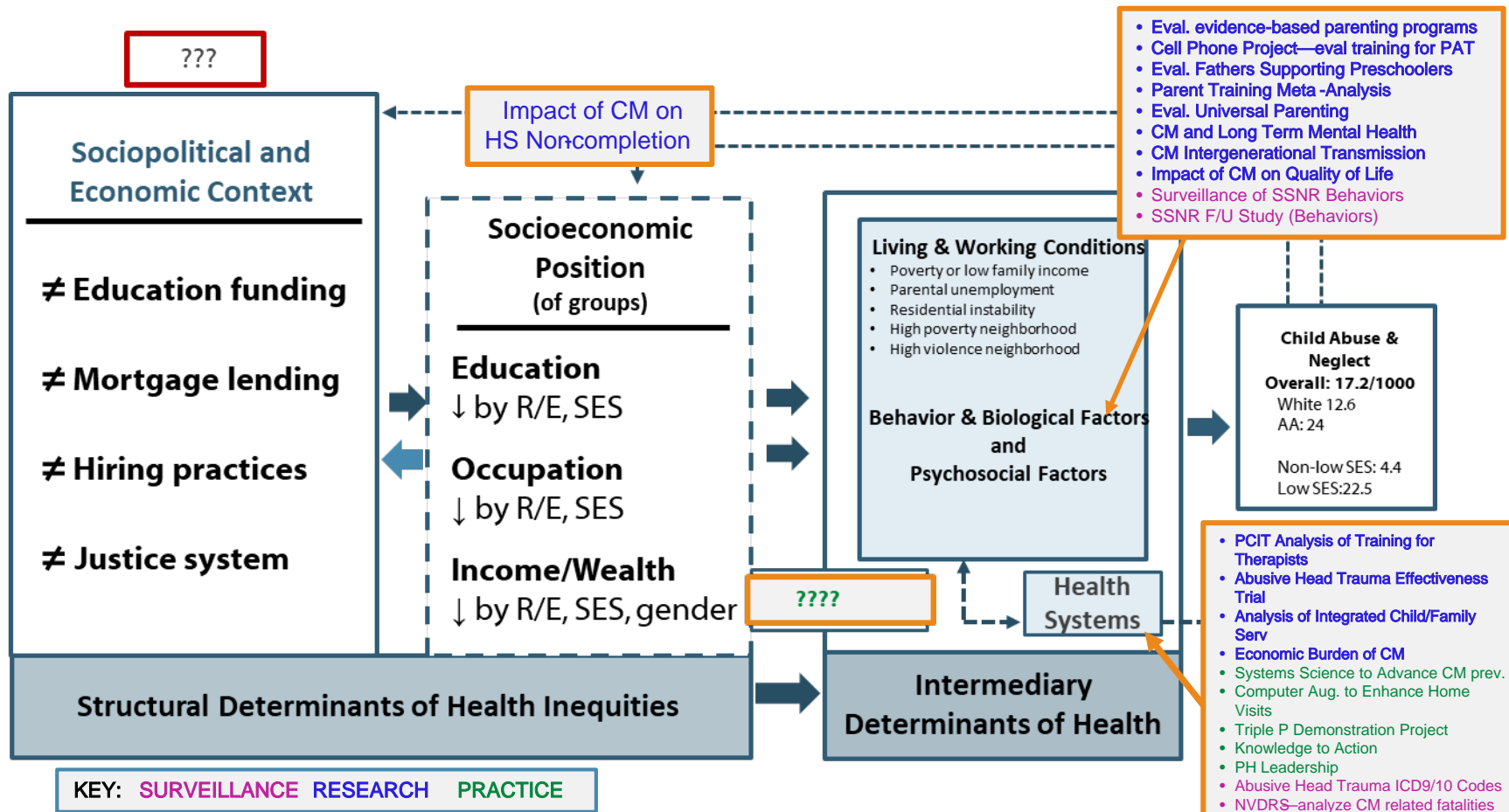


World Health Organization

Conceptual Framework on the Social Determinants of Health



Child Abuse and Neglect Activities (~2012)



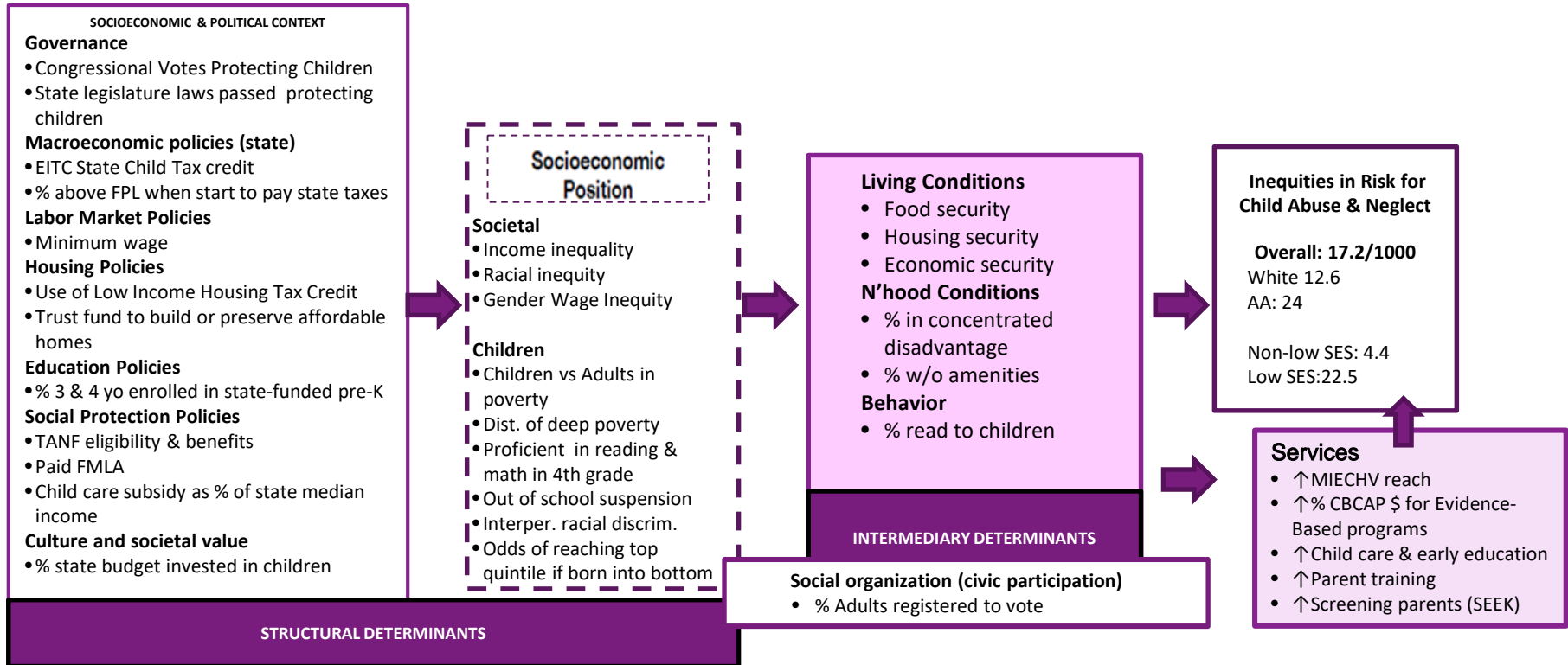
Expanding Our Strategies & Approaches



**Assuring
Safe, Stable, Nurturing
Relationships & Environments
for All Children**



Essentials for Childhood: Indicators of Safe, Stable, Nurturing Relationships & Environments



Policy Scan: Potential Policy Buckets


- Reduce poverty
- De-concentrate poverty
- Increase residential stability
- Increase accessibility & continuity of affordable high quality childcare
- Increase accessibility to high quality pre-K
- Facilitate children's access to health care
- Facilitate parents' access to health care, including mental health care

Policies that address social determinants with evidence of impacts on child maltreatment

- TANF: higher benefits; no family cap or time limits¹ or work requirements²
- Child support passed through to custodial parent³
- Other income supports: WIC or SNAP⁴
- Livable wage⁵
- Earned Income Tax Credit⁶
- Pre-K with parental involvement⁷
- Continuity in eligibility for State Children's Health Insurance Program⁸
- Child care subsidies⁸
- Early Head Start⁹
- Paid family leave¹⁰

¹Paxson & Waldfogel, 2003; ²Fein & Lee, 2003; ³Cancian, et al., 2013; ⁴Lee & Mackey-Bilaver, 2007; ⁵Raissian, & Bullinger, 2017; ⁶Klevens et al., 2017; ⁷Mersky, Topitzes, & Reynolds (2011); ⁸Klevens et al., 2015; ⁹Green et al., 2014; ¹⁰Klevens et al., 2016.

Policies that address social determinants with impacts on risk factors of child maltreatment

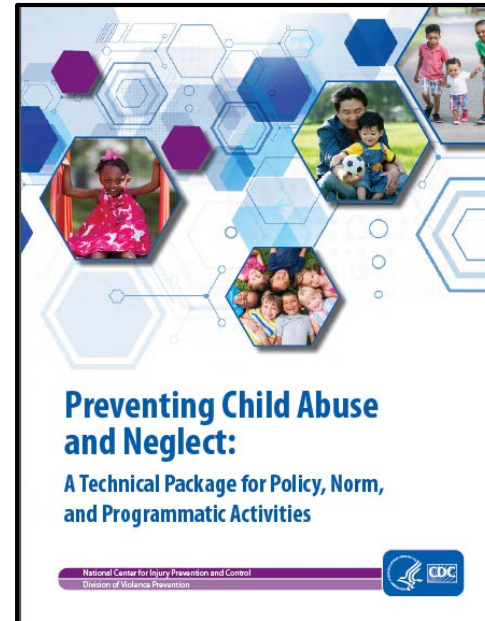
- Child Tax Credit¹
 - Conditional housing vouchers²
 - Head Start³
 - Paid sick leave⁴
 - Paid vacation⁴
 - Flexible work schedules⁴
- 
- “Family-friendly work policies”**

¹NBER, 2008; Strully et al., 2010; Marr et al., 2014; ²Cove et al.,(2008); Ludwig et al. (2011); Ludwig et al. (2012); Kessler et al. (2014); Sanbonmatsu et al., (2012));

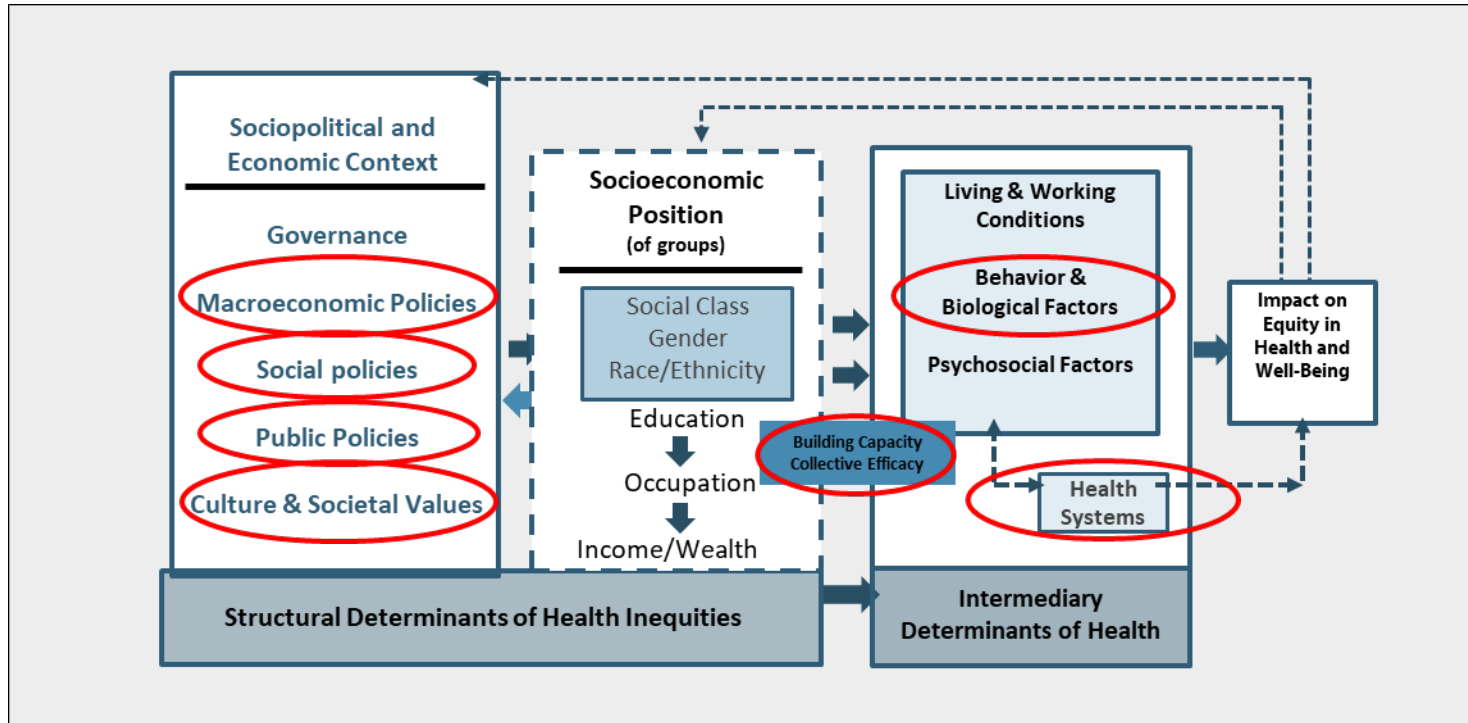
³USDHHS/ACF (2005); Garces et al. (2002); ⁴Aumann & Galinsky, 2009.

Child Abuse & Neglect Technical Package

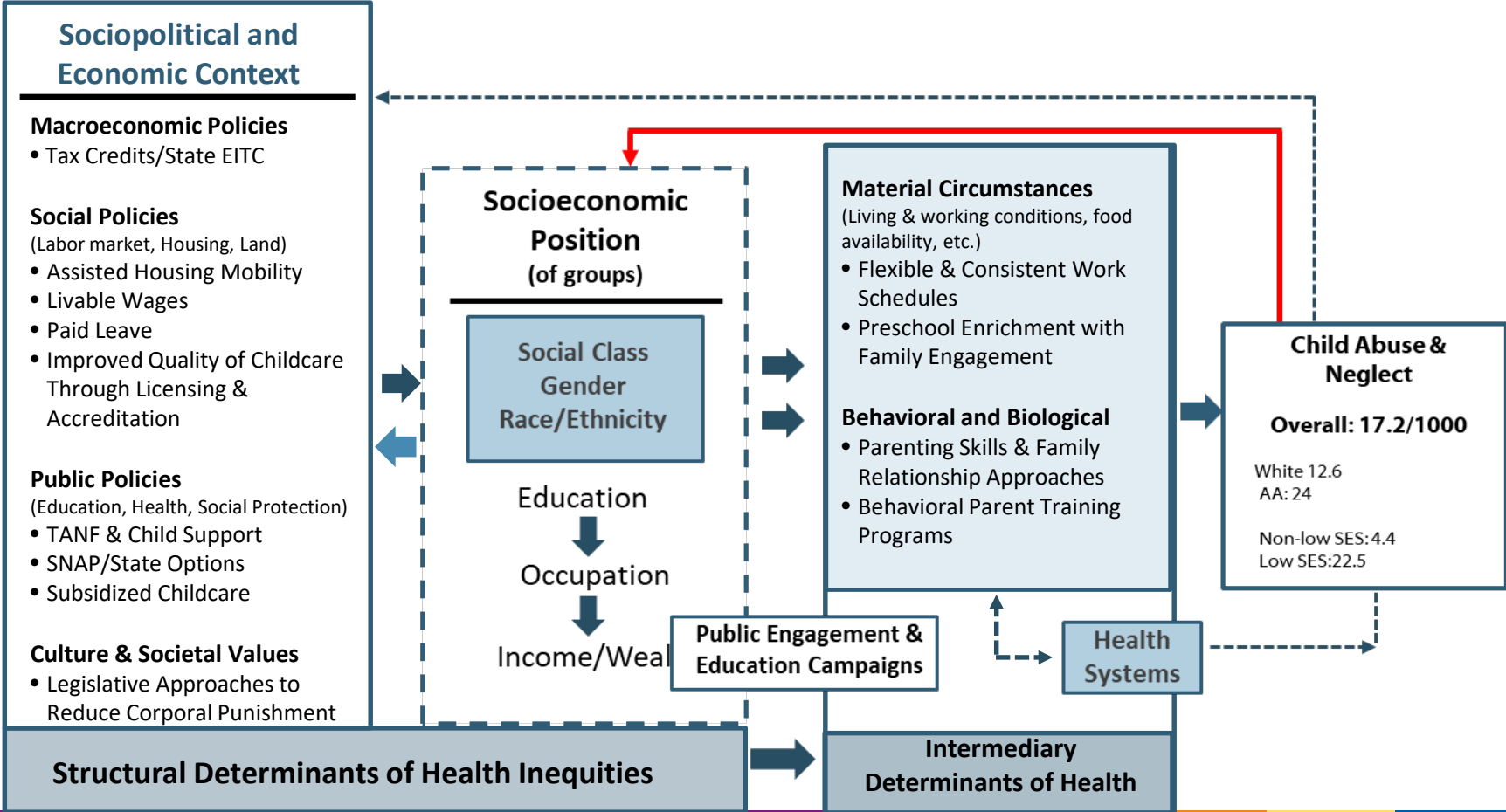
Select group of strategies with a focus on **PREVENTING** child abuse & neglect from happening in the first place, as well as approaches to **LESSEN** the immediate and long-term harms of child abuse & neglect.



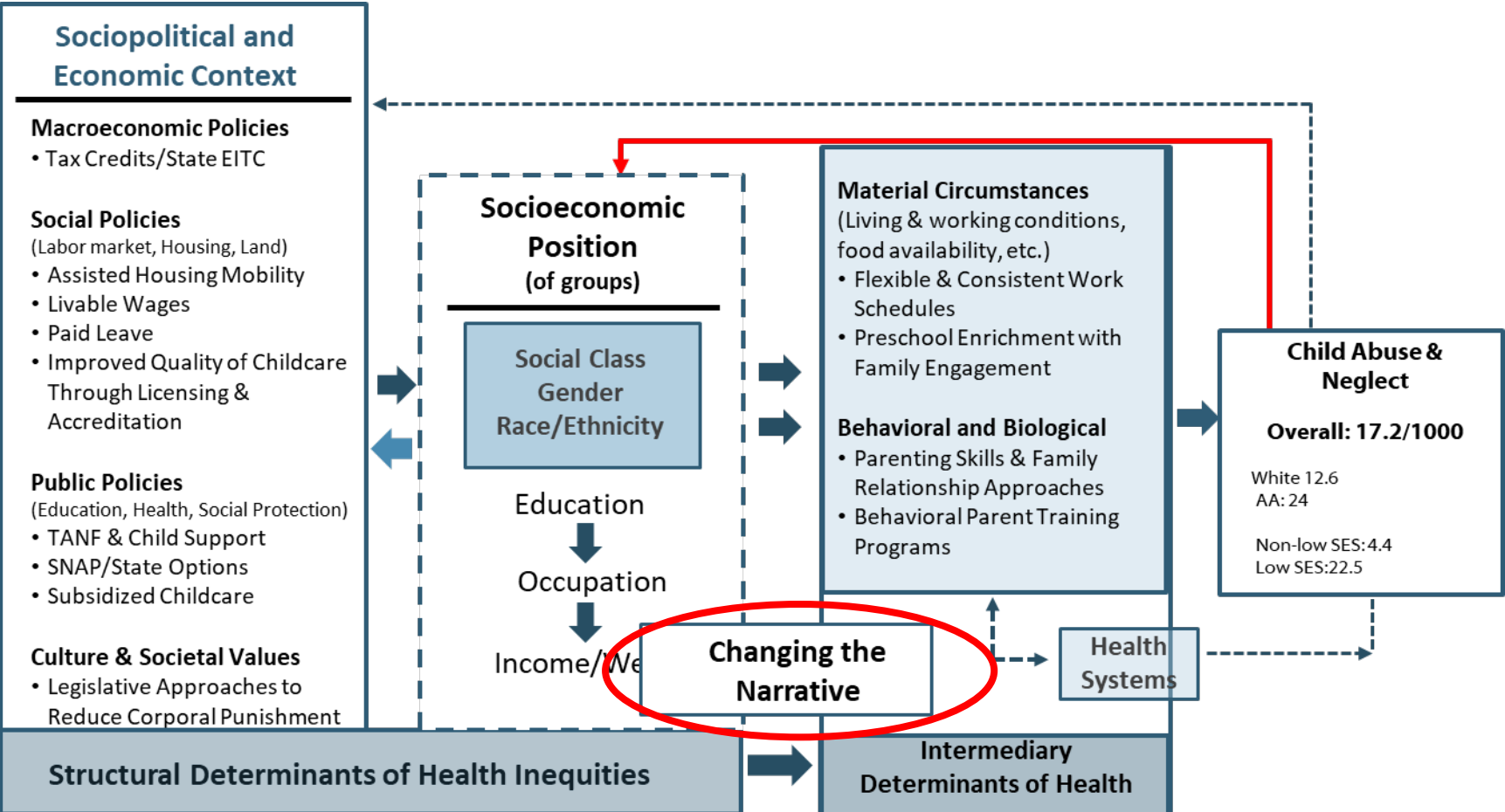
Technical Package: Comprehensive Strategies



Approaches in the Child Abuse & Neglect Technical Package



Approaches in the Child Abuse & Neglect Technical Package



Changing the Narrative around Adverse Childhood Experiences

Changing the Narrative

- **Narrative**: The stories we tell about why problems occur and ***who's responsible for solving them***
- Dominant narrative around child abuse and neglect is about ***those*** parents; just report and “fix”
- Dominant narrative around ACEs: “What happened to you?”; be trauma informed
- Changing the narrative is changing the way people think about and approach the problem.

Changing the Narrative

Cognitive¹ and linguistic² science recommend **starting with shared values** (i.e., **why this matters**), for example:

- Our state's future depends on how well we foster the healthy development of our youngest generation.
 - Assuring safe, stable, nurturing relationships and environments for all children is essential for our state's future prosperity.
- Other values that resonate: ingenuity and connectedness

Changing the Narrative

Follow with what the problem or challenge is and connect the dots between the causes and the outcome (tell a “causal story”). For example:

- We now know that early experiences literally build the architecture of the developing brain, and that *safe, stable, nurturing relationships and environments* are key to building a solid foundation for future growth.
- We also know that not all children have access to the kinds of experiences that will most benefit their development - some children experience adversity that is so severe and persistent that it produces toxic levels of stress that harm the brain’s developing architecture.

Changing the Narrative

Next, **explain how we, as a collective, can solve it.** For example:

- We can prevent toxic stress by providing the kinds of experiences in [**early care**] [**education**] [**work**] settings that will both help parents and provide sturdy foundations for children's development.
- Research shows [**high quality child care**] [**high quality early education**] [**family-friendly business practice, like paid family & sick leave**] [**home visitation**] can prevent or alleviate the conditions known to produce toxic stress.

Changing the Narrative

Last, **have an “ask.”** Explain what your audience can do to be part of the solution.

For example:

- Visit our website to find out more.
- Share this information with your family and friends.
- Educate community, state, and national leaders on what works in prevention.

Changing the Narrative: Example

- **Value:** The future of [our state] depends on ensuring that the pathways to opportunity are open and accessible for everyone. When we allow **any** community to struggle, that derails progress for all of us.
- **Problem-Causal Story:** Right now, many communities face barriers to the resources that strengthen opportunity, such as good paying jobs, affordable housing and quality childcare. When we do not address the needs of our communities, we can perpetuate hardship instead of strengthening opportunity.
- **Example Solution:** The Earned Income Tax Credit helps low-income families increase their income while supporting work.

Changing the Narrative: Example

- **Value:** In [our state], we have a long tradition of working together to solve tough problems. And if we hope to have a prosperous future, we need to apply innovative thinking to current challenges in the wellbeing of our workforce.
- **Problem-Causal Story:** Right now, many jobs don't pay enough for workers to afford basic needs. The cost of groceries, housing and other basics have gone up but wages haven't. That hurts working people *and* slows down the economy.
- **Example Solution:** A living wage helps not just individuals and families, but also our communities and economy. When people have more money to spend, it will boost Main Street and help our communities thrive.

State Essentials for Childhood Informing Policy

➤ Strengthen Economic Supports for Families:

- **CA** increased minimum wage (2016), eliminated family cap on TANF (2016), increased state funding for affordable housing (2016), increased access and amount of paid family leave wages for lower income parents (2016), and created an EITC (2017)
- **CO** increased minimum wage (2016)
- **MA** increased state funding for affordable housing (2016), enhanced EITC & passed paid family leave (2018)
- **WA** increased minimum wage (2016), banned discrimination on holders of housing vouchers (2016), passed sick leave (2016) and paid family leave (2017)

➤ Provide Quality Care and Education Early in Life:

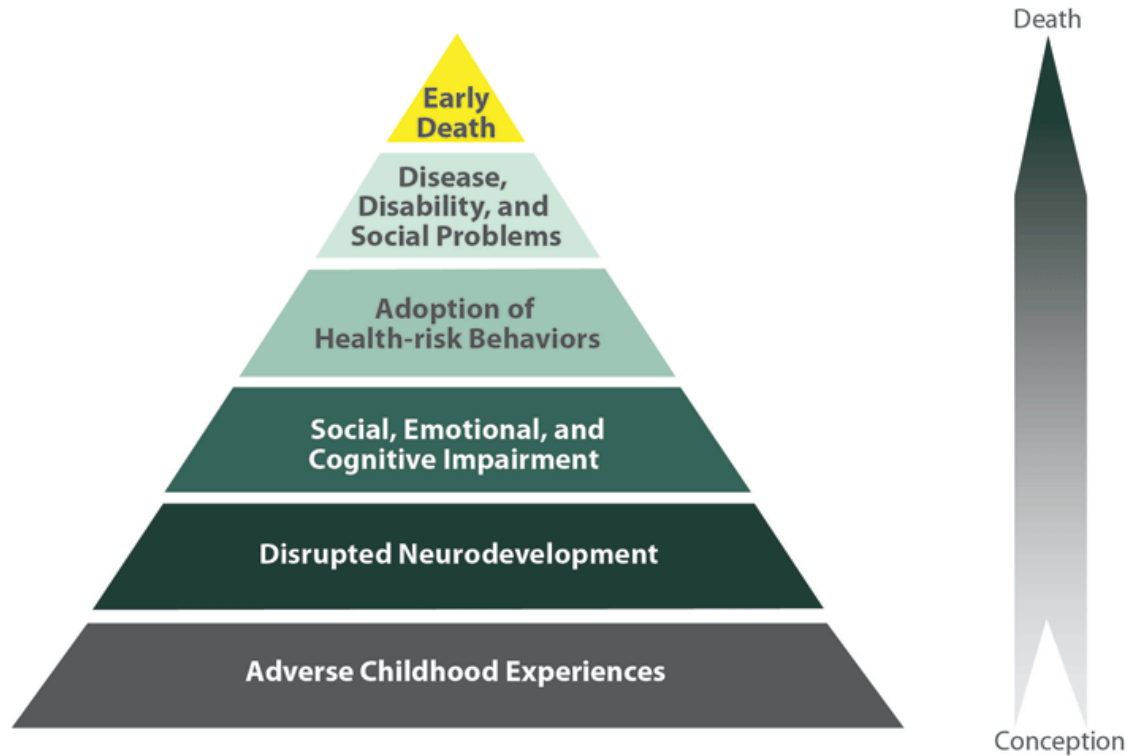
- **CA** increased % of children enrolled in pre-K (2016)
- **CO** increased % of children enrolled in pre-K (2016)
- **NC** increased child care subsidies and number of pre-K slots (2016).
- **WA** increased % of children enrolled in pre-K and implemented full-day kindergarten (2016)

Moving Forward

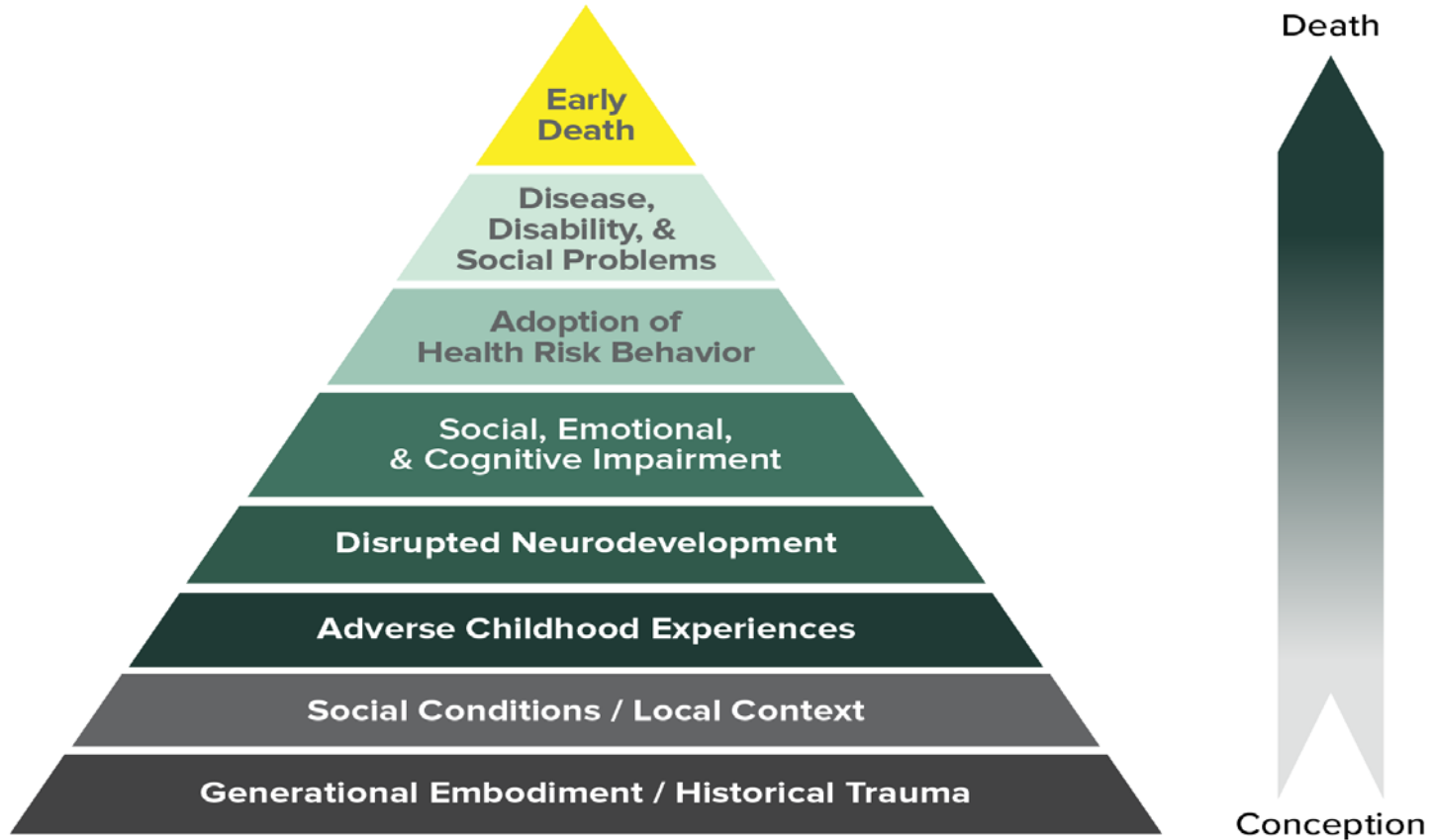
Where are We Now?

- Policy analyses & tracking
- New narratives / trainings
- Recent funding initiatives
 - Essentials for Childhood
 - Delta IMPACT/Intimate Partner Violence
 - ACEs & Opioids Community Project
- New uses of the WHO CSDH framework
- Organizational change





Mechanism by Which Adverse Childhood Experiences Influence Health and Well-being Throughout the Lifespan



Mechanism by which Adverse Childhood Experiences Influence Health and Well-being Throughout the Lifespan

What We Are Learning

- It helps to have a conceptual framework.
- Be explicit about what it means to bring an equity lens.
- Changing the narrative matters.
- Use the best available evidence to “learn while doing.”
- People are energized by this cohesive approach.
- This is the right thing to do for all children, families, communities & society.

Discussion