

HRSA

NATIONAL HEALTH

SERVICE

CORPS



NHSC Updates

National Advisory Council Meeting

November 5, 2020

Israil Ali | Director

Division of National Health Service Corps (DNHSC)
Bureau of Health Workforce (BHW)
Health Resources and Services Administration (HRSA)





National Advisory Council Meeting *Agenda*

- **FY20 Overview & Success**
- **FY21 Priorities**
- **50 years and Beyond**
- **Open Discussion Q&A**



FY20 Overview & Success



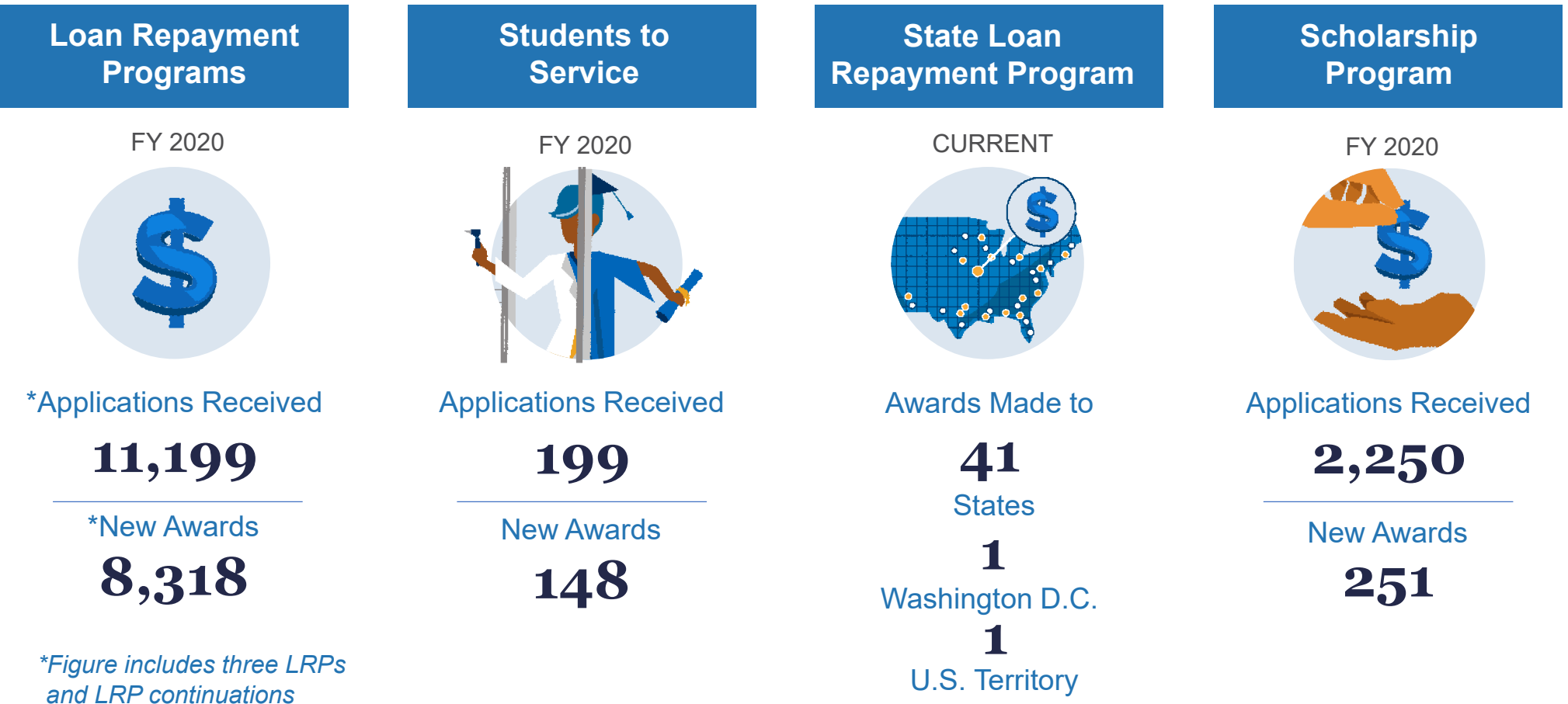
FY20 Overview: *NHSC program*

- The NHSC response to COVID-19
 - Program participant flexibilities
 - Applicant flexibilities
- The NHSC expended almost \$420M in FY20
- Leverage geospatial mapping tools



FY20 Overview: NHSC Applications and Awards in 2020

Applications and Awards



FY20 Overview: *NHSC Field Strength*

More than

16,000

*NHSC members are
currently providing
care to more than*

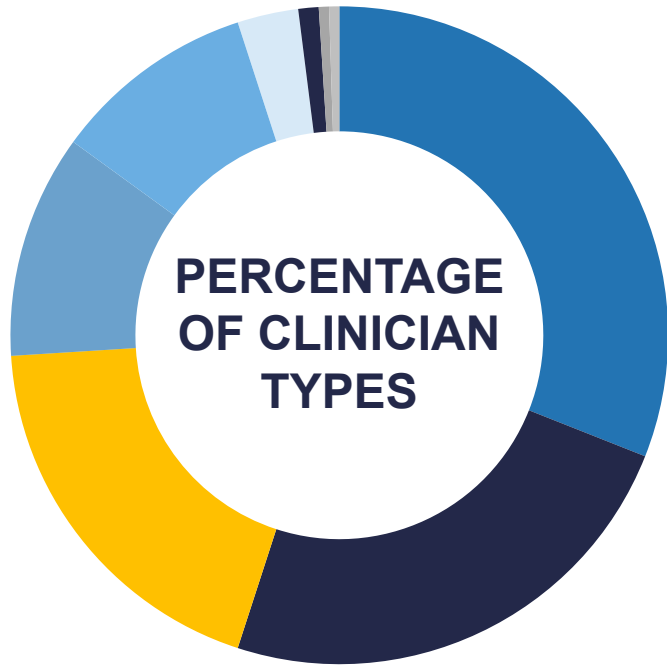
**17
million**

people in the U.S.

Many NHSC members continue to serve in areas of greatest need up to two years after completing their service obligation



National Health Service Corps: Now



- 31%** Behavioral Health Providers
- 24%** Nurse Practitioners
- 19%** Physicians
- 11%** Dentists
- 10%** Physician Assistants
- 3%** Registered Hygienists
- 1%** Nurse Midwives
- .5%** *Registered Nurses
- .5%** *Pharmacists



*New disciplines added with SUD Workforce LRP and Rural Community LRP in FY 2019

FY20 Success: NHSC Programs

- NHSC LRP awarded all eligible applicants serving in a Indian Health or 638 Tribal Health Facility in FY20
- NHSC LRP awarded applicants with a HPSA score of 15 in the traditional 2-year program.
- Prioritized awards to prior *Primary Care Training and Enhancement Fellowship Program*



FY20 Success: NHSC Programs (Continued)

- NHSC Scholarship Program increased the number of NHSC Scholarship Awards by 25% above FY19 totals.
- The recognition of providers capable of providing Medication Assisted Treatment increased by 63%
 - 204 award enhancements
 - SUD workforce and Rural Community LRP
 - Tracking providers who train and provide MAT



FY21 Priorities



FY21 Priorities

1. Establishing more program linkages
2. Dedicated support to the NHSC Pipeline
3. Optimize data collection and utilization



Priorities for FY21: *Establishing Program Linkages*

➤ **Identifying BHW Program linkages**

(e.g., Teaching Health Center GME, Addiction Medicine Fellowship, etc.)

➤ **Enhancing data collection via program applications**

(e.g. tracking residency and fellowship programs)

➤ **Evaluate residency and fellowship programs of the NHSC pipeline**



Priorities for FY21:

Dedicated support to the NHSC pipeline

➤ **Expand disciplines for the S2S LRP program**

(e.g. NPs and CNMs)

➤ **Establish mechanisms to recognize if post-graduate trainings of the pipeline are funded by BHW**

(e.g. Scholars and S2S participants)

➤ **Increase the NHSC pipeline's readiness to serve HPSAs**

(e.g. Technical Assistance, Focus Groups, Address resiliency and prevent burnout)



Priorities for FY21: *Optimizing Data Collection and Utilization*

➤ Evaluate the applicants who apply to NHSC programs

(e.g. the migration patterns of NHSC applicants and its influence on training and employment)

➤ Engaging in predictive modeling

(e.g. NHSC dashboards, National Sample Survey for Registered Nurses: NSS-RN)

➤ Laying the foundation for NHSC outcomes

(e.g. NHSC behavioral health survey)



50 years & Beyond



50 Years and Beyond

NHSC Programs

- **Celebrating 50 years in FY22!!**
The year of the inaugural field strength of the NHSC
- **Align the NHSC with BHWs program aims**
Primary Care Disciplines vs. Primary Care Services
Maternal Care Target Areas (MCTA)
- **Forecasting the business of healthcare**
Interpreting legislation for today's delivery of care
- **Identify the characteristics of those likely to remain**
Assess readiness to identify competency gaps
Use NHSC data to inform Title VII and VIII program development.



Questions





Support & Resources

Contact Us

- **Israil Ali, Director**
- Division of National Health Service Corps (DNHSC)
- Bureau of Health Workforce (BHW)
- Health Resources and Services Administration (HRSA)
- Phone: 1-800-221-9393 (Customer Care Center); M-F, 8 a.m. to 8 p.m. ET, except federal holidays

Web <http://nhsc.hrsa.gov>

Virtual Job Fair: <http://jobfair.hrsa.gov>

Health Workforce Connector: <http://connector.hrsa.gov/>

 Facebook: <http://facebook.com/nationalhealthservicecorps>

 Twitter: <http://twitter.com/NHSCorps>

 LinkedIn: <http://www.linkedin.com/company/national-health-service-corps>



Connect with HRSA

Learn more about our agency at:

www.HRSA.gov



Sign up for the HRSA eNews

FOLLOW US:

