



Medicaid and CHIP Data on Maternal and Infant Health

Secretary's Advisory Committee on Infant Mortality
March 26, 2015

Lekisha Daniel-Robinson, MSPH
Coordinator, Maternal and Infant Health Initiative
Center for Medicaid and CHIP Services, CMS

Improving Perinatal Data and Information in Medicaid & CHIP

- Core Set of Maternity Measures for Medicaid and CHIP

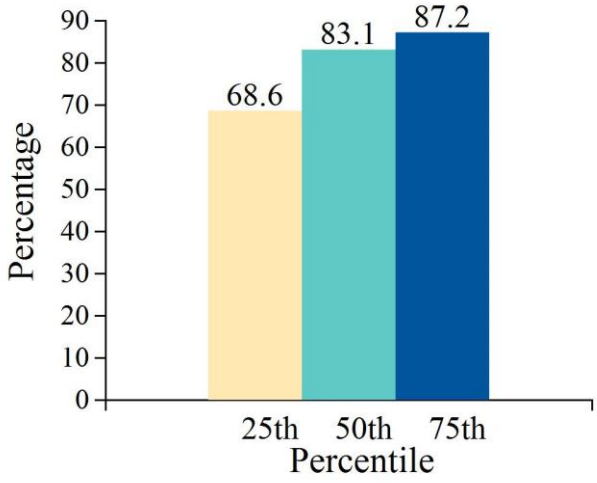
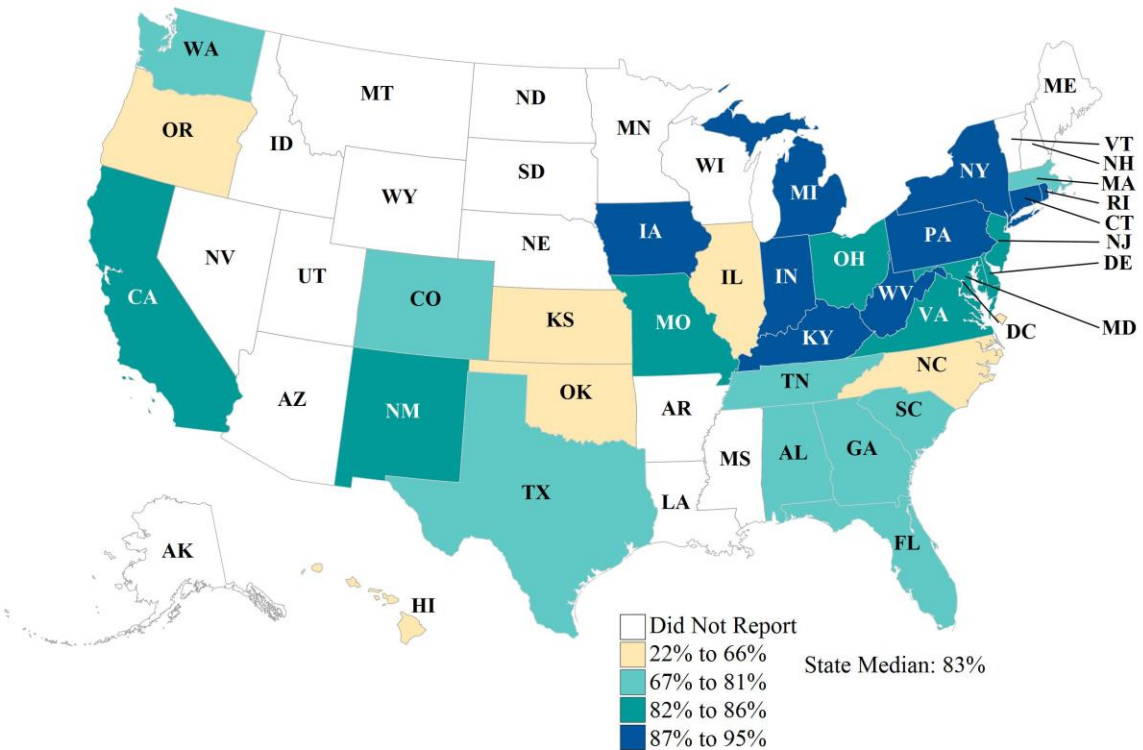
Child Core Set	Adult Core Set
Timeliness of Prenatal Care	Postpartum Care
Frequency of Ongoing Prenatal Care	Elective Delivery
Well-Child Visits first 15 months of life	Antenatal Steroids
Cesarean Rate (1 st pregnancy)	Behavioral Risk Assessment
Percentage of Low Births Weighing Less than 2,500 grams	

- Partnered with CDC to conduct training for states on data linkage and use of state Vital Records, Medicaid claims and Title V data to facilitate collection of relevant Medicaid quality measures.
 - Initial states for training: AZ, GA, KY, IN, MA, ME, MI, MS, NM, NV, OK, SD, WV and WY
 - 2nd Cohort for training: CT, DE, NE, NJ, VA, DC
- Adult Quality Grants (demographic stratification)
- Analysis of Hospital Utilization and Costs among Preterm Infants by Payer using the HCUP Nationwide Inpatient Sample

TIMELINESS OF PRENATAL CARE (PPC)

Percentage of Pregnant Women with a Prenatal Care Visit in the First Trimester or within 42 Days of Medicaid/CHIP Enrollment (n = 33 states)

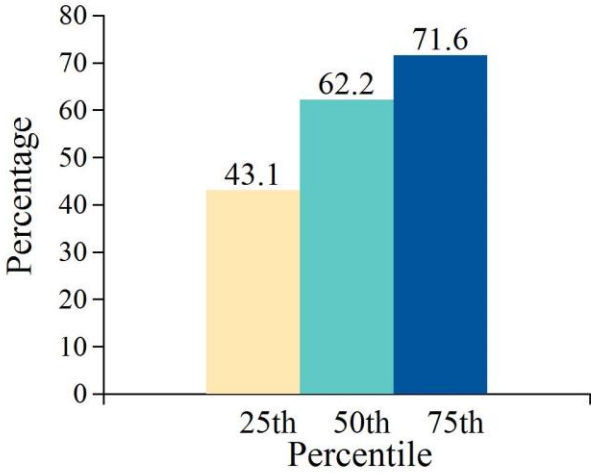
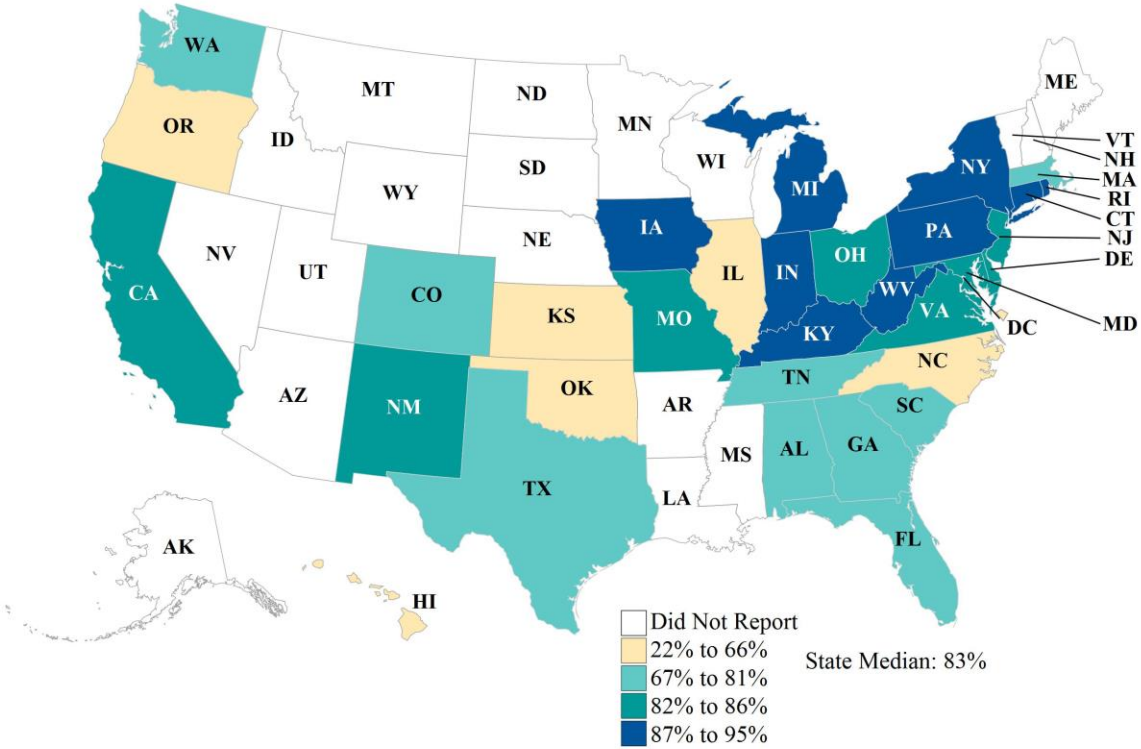
Source: Mathematica analysis of FFY 2013 CARTS reports as of August 4, 2014.



FREQUENCY OF ONGOING PRENATAL CARE (FPC)

Percentage of Pregnant Women Receiving More Than 80 Percent of the Expected Number of Prenatal Care Visits (n = 27 states)

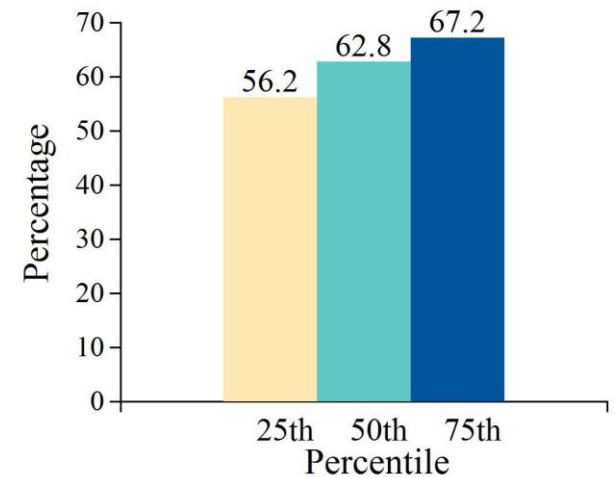
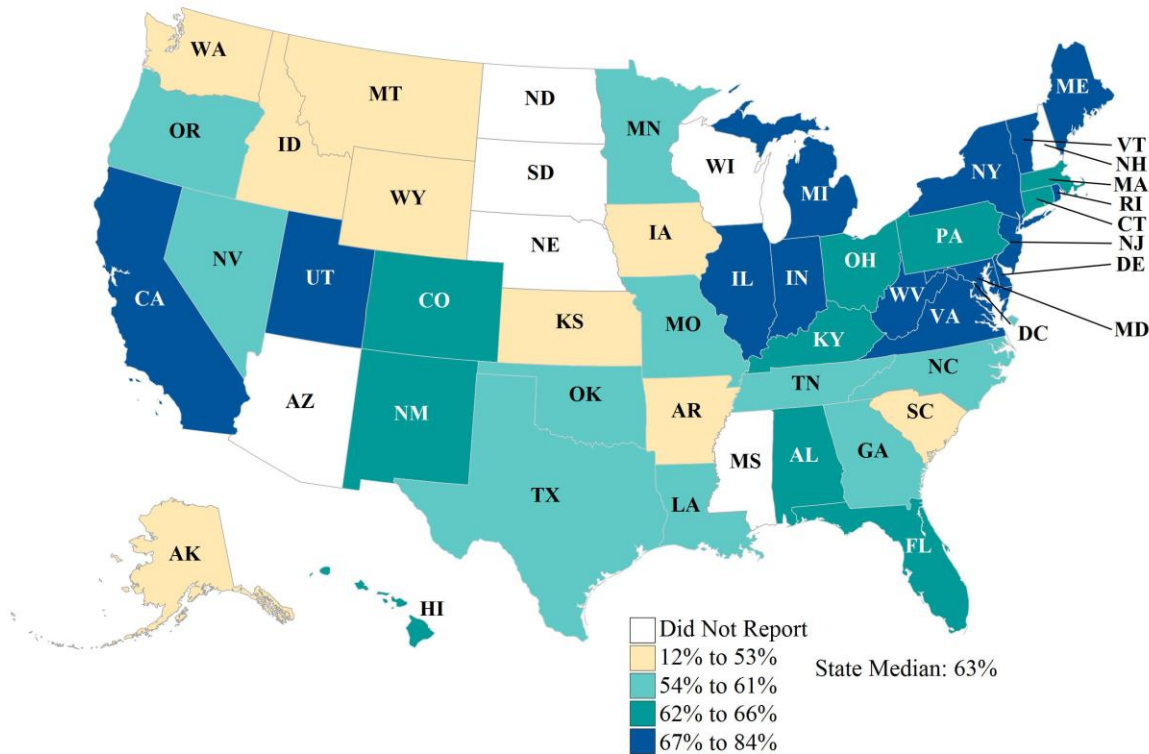
Source: Mathematica analysis of FFY 2013 CARTS reports as of August 4, 2014.



WELL-CHILD VISITS IN THE FIRST 15 MONTHS OF LIFE (W15)

Percentage of Children Receiving 6 or More Well-Child Visits in the First 15 Months of Life (n = 44 states)

Source: Mathematica analysis of FFY 2013 CARTS reports as of August 4, 2014.

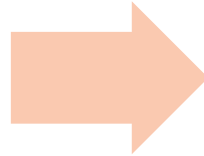


CMCS Maternal and Infant Health Initiative

Strategies and Activities

Strategies

- Engage states, providers, and beneficiaries
- Leverage federal partnerships
- Strengthen technical assistance
- Measure quality and improve performance



Activities

- Improving Postpartum Care Action Learning Series
- Development of quality measure for contraceptive utilization
- Funding opportunity
- Quarterly webinars

For more information visit Medicaid.gov:

Maternal and Infant Health Care Quality –

<http://www.medicaid.gov/Medicaid-CHIP-Program-Information/By-Topics/Quality-of-Care/Maternal-and-Infant-Health-Care-Quality.html>