



Secretary's Advisory Commission on Infant Mortality

Kenn L. Harris, NICHQ Senior Project Director

Supporting Healthy Start Performance Project

Health Resources and Services Administration, Maternal and Child Health Bureau

National Institute for Children's Health Quality

“When America gets a cold, Black people get **pneumonia**”

Disparities in
Incarceration

Disparities in
Disease

Disparities in
Employment

Disparities in Infant
Mortality

Disparities in
Maternal Mortality

*Disproportionality
and Disparity* in
Child Welfare

Disparities in...you name it!



African Americans are disproportionately diseased and dying from coronavirus

A Washington Post analysis of available data and census demographics found counties where most of the population is African American have "three times the rate of infections and almost six times the rate of deaths as counties where white residents are in the majority."



Coronavirus hits poor, minority communities harder

And it's going to impact vulnerable Black women harder!

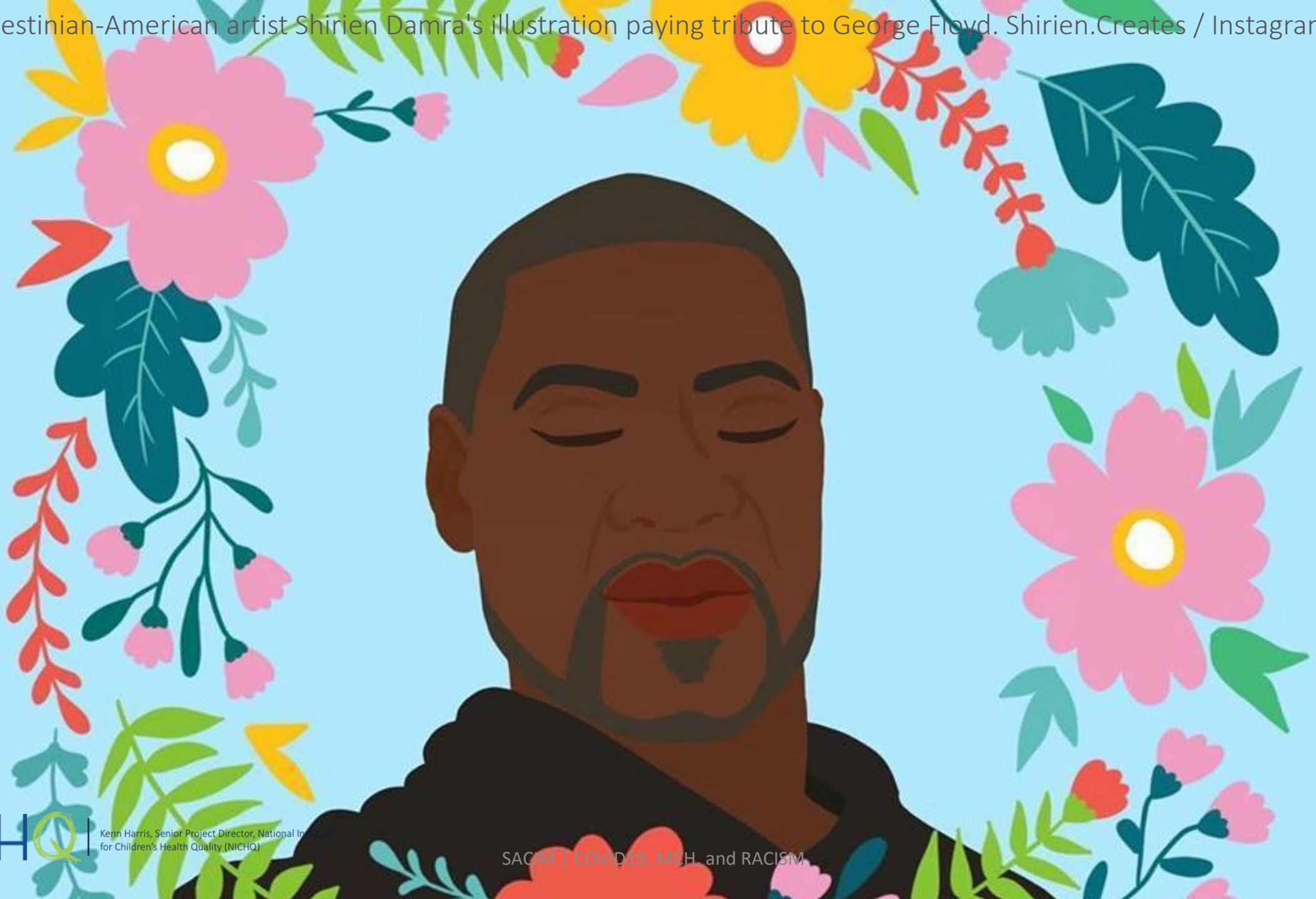
A woman with curly hair is sitting in a dark environment, her hands resting on her knee. The lighting is dramatic, highlighting her face and hands against the deep shadows. The word 'RACISM' is written in large, semi-transparent, light-colored capital letters across the bottom of the image, partially overlapping the woman's legs.

NICHQ

Kenn Harris, Senior Project Director, National Institute
for Children's Health Quality (NICHQ)

RACISM

Palestinian-American artist Shirien Damra's illustration paying tribute to George Floyd. Shirien.Creates / Instagram





experiences of mothers

Expectations of ourselves

1935

Depression, Title IV
Social Security Act

1960

Newborn
Screenings

1970

Family
Planning

1980

Block
Grant

1990

Healthy Start,
State SCHIP,
family
involvement

2000

Technology,
LifeCourse, key
stages of
interconception,
preconception

2010

Impact of Racism,
Health Equity,
SDoH, Family-
centered services,
CoIINs

2019

Population Health,
Community
engagement, policies,
best practice

1619

1719

1819

1919

2019

2119

MCH



Basic needs

common knowledge

Discovered needs

emerging awareness

Supporting moms

Impacts infants,
children, families &
communities

NICHQ

Sarah Harris, Senior Project Director, National Institute
for Children's Health Quality (NICHQ)

SACIM | COVID19, MCH, and RACISM



LOOK BACK

LOOK BEYOND

1991-1997

"HS MCH"

2001-2005

"IC & Maternal Depression"

2009-2014

"Evidence-based Practice & Workforce Development"

2019-2024

"Innovation/Transformation/SDOH&E Fatherhood/ Maternal Mortality"

1997-2001

"Replication and 9 Core Services"

2005-2009

"Lifecourse"

2014-2019

"Collective Impact & Community Health Workers/Fatherhood"

2024



Infants Children

LOOK NOW

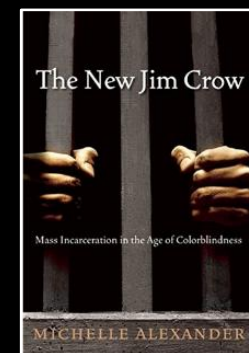
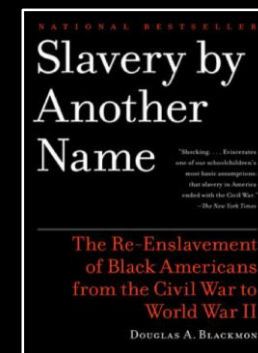
Too many, too small, too soon



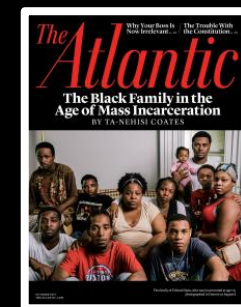
Kenn Harris, Senior Project Director, National Institute for Children's Health Quality (NICHQ)

SACIM | COVID19, MCH, and RACISM

Incarceration has increased by more than **500%** in the last 40 years



The Atlantic
250 years of slavery. 90 years of Jim Crow. 60 years of separate but equal. 35 years of state-sanctioned redlining. Until we reckon with the compounding moral debts of our ancestors, America will never be whole.
THE CASE FOR REPARATIONS
BY TA-NEHISI COATES



Reach for something better!



If we want to celebrate the triumphant parts of our past,
we must be willing to confront the negative parts as well”

- Douglas Blackmon



Thank you!



Kenn Harris, Senior Project Director, National Institute
for Children's Health Quality (NICHQ)

SACIM | COVID19, MCH, and RACISM