

A stylized icon in the top left corner depicting a family of four: a large circle for a parent, a medium circle for another parent, and two smaller circles for children, all in white with black outlines.

Health Resources and Services Administration
Maternal And Child Health Bureau

Healthy Start

What's Happening

Maribeth Badura, M.S.N.

Dept. of Health and Human Services (HHS)

Health Resources and Services Administration (HRSA)

Maternal and Child Health Bureau (MCHB)

Division of Healthy Start and Perinatal Services (DHSPS)

June 2007

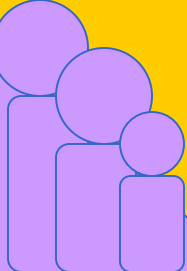


HEALTHY START

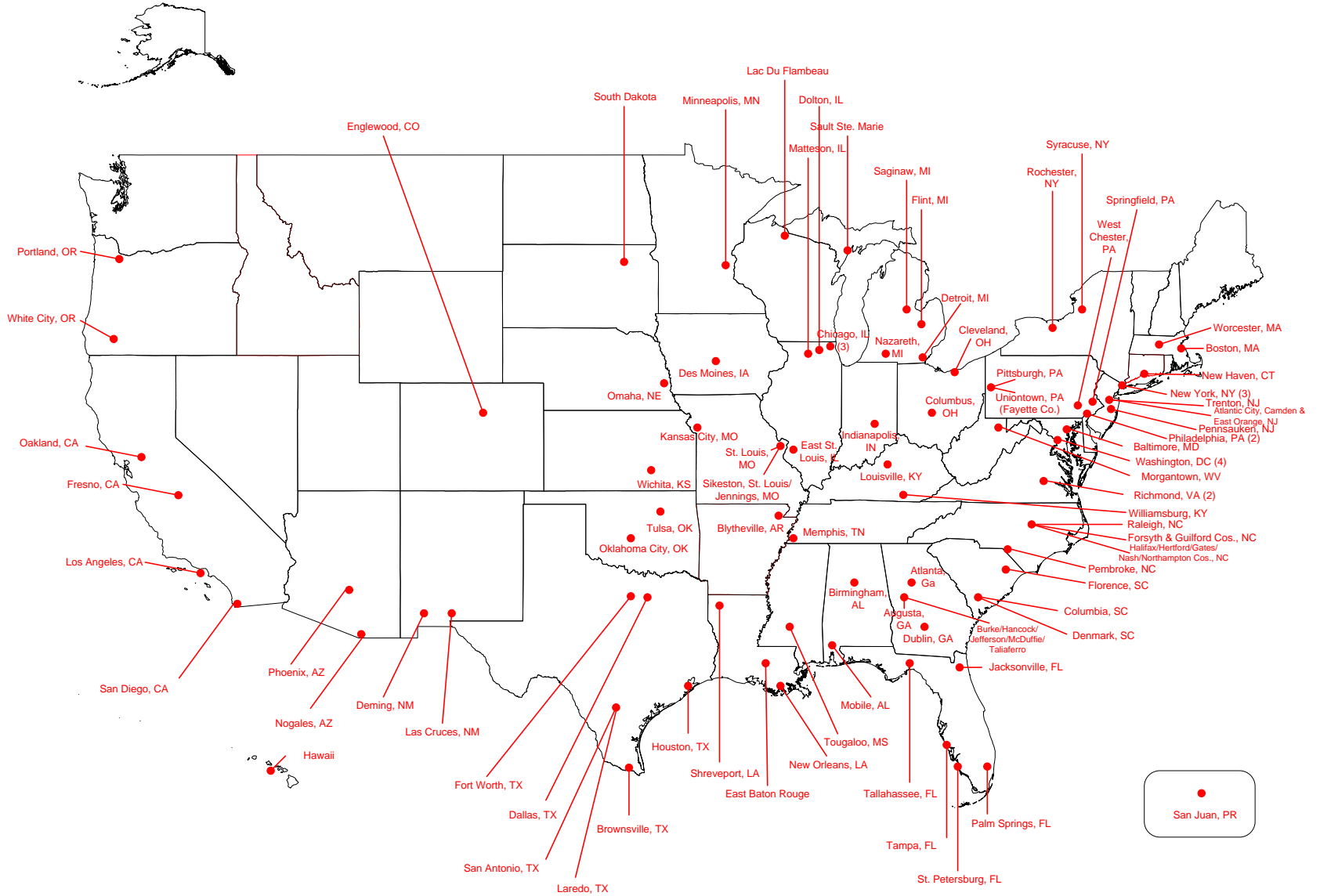
AUTHORIZING LEGISLATION

Title III, Section 330H of the Public Health Service Act (42 U.S.C. 254c-8)

- An initiative to reduce the rate of infant mortality and improve perinatal outcomes
- Make grants for project areas with high annual rates of infant mortality
- Requires communities to partner with statewide systems and with other community services funded under the Maternal and Child Health Block Grant
- Requires communities to have community consortium



Healthy Start Project Area Sites





HEALTHY START AND PERINATAL SERVICES

ELIMINATING DISPARITIES IN PERINATAL HEALTH

92 Communities

- 2004-2008 Six Grantees
- 2005-2009 Seventy-four Grantees
- 2006-2010 Twelve Grantees



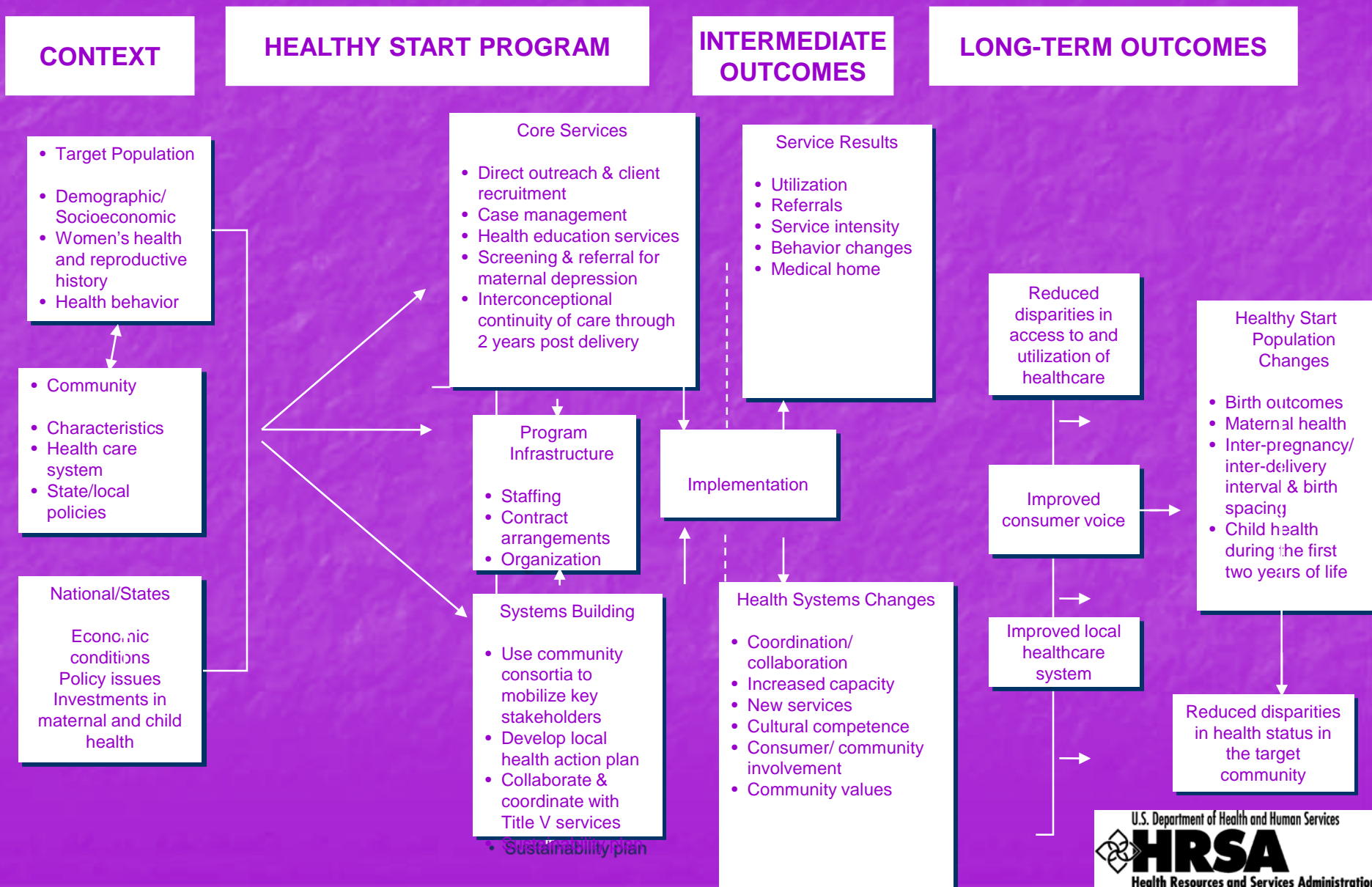
HEALTHY START AND PERINATAL SERVICES

ELIMINATING DISPARITIES IN PERINATAL HEALTH-BORDER, ALASKAN AND NATIVE HAWAIIAN COMMUNITIES

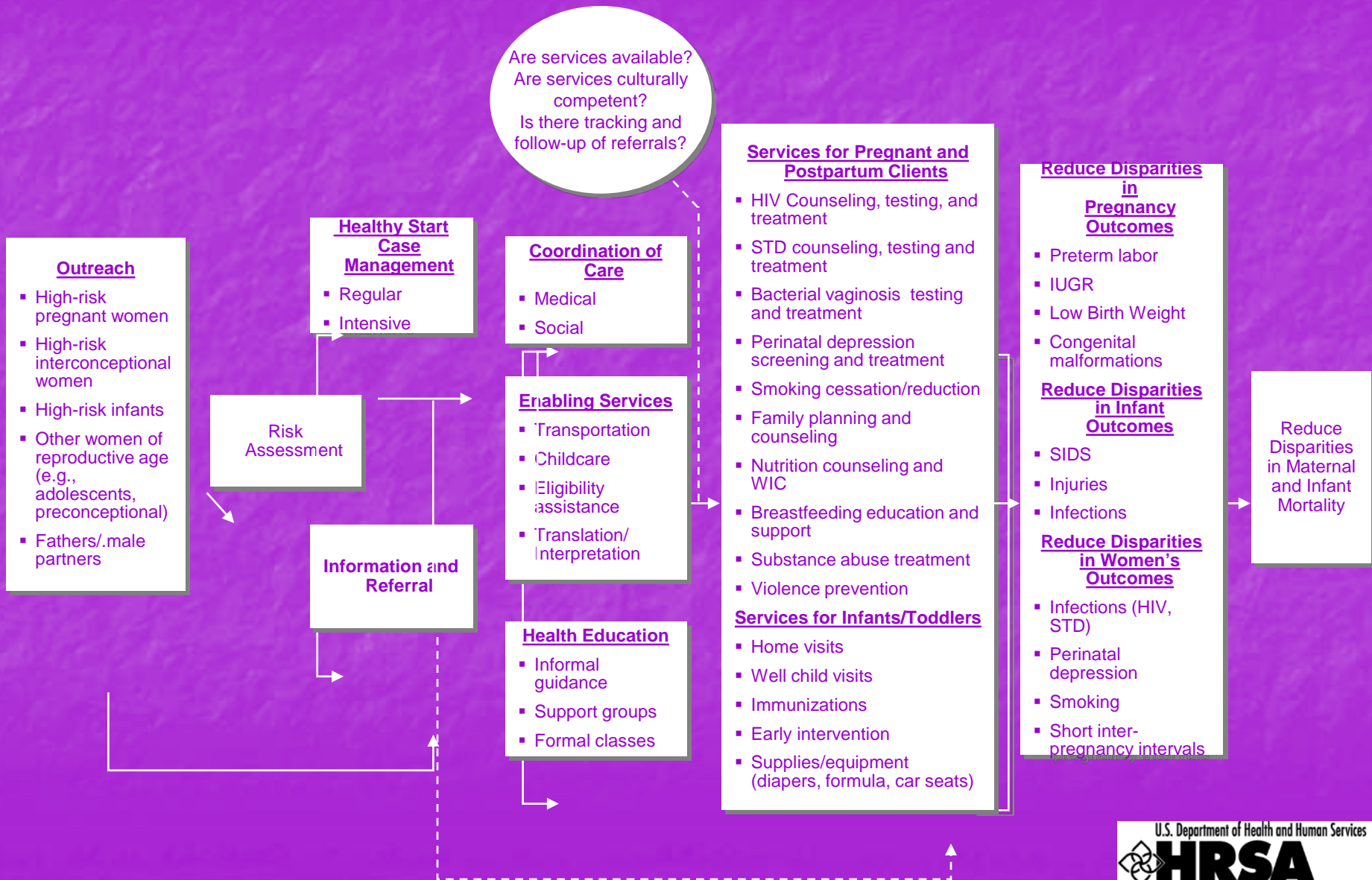
7 Communities

- 2004-2008 Two Grantees
- 2005-2009 Three Grantees
- 2007-2011 Two Grantees

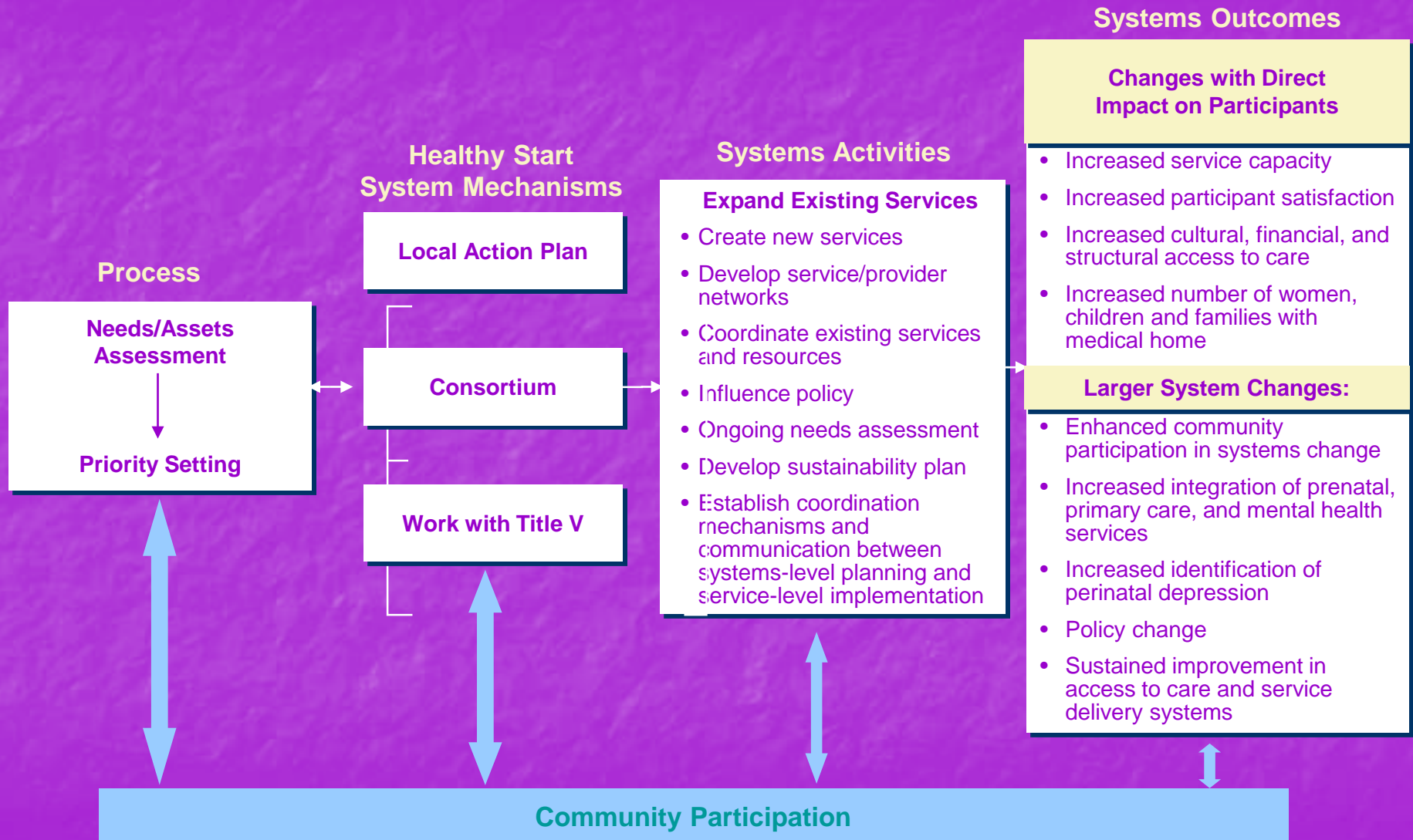
HEALTHY START LOGIC MODEL



HYPOTHESIZED LINK BETWEEN HEALTHY START SERVICES AND RESULTS



HYPOTHESIZED LINK BETWEEN HEALTHY START SYSTEMS ACTIVITIES AND RESULTS



Systems Outcomes

Changes with Direct Impact on Participants

- Increased service capacity
- Increased participant satisfaction
- Increased cultural, financial, and structural access to care
- Increased number of women, children and families with medical home

Larger System Changes:

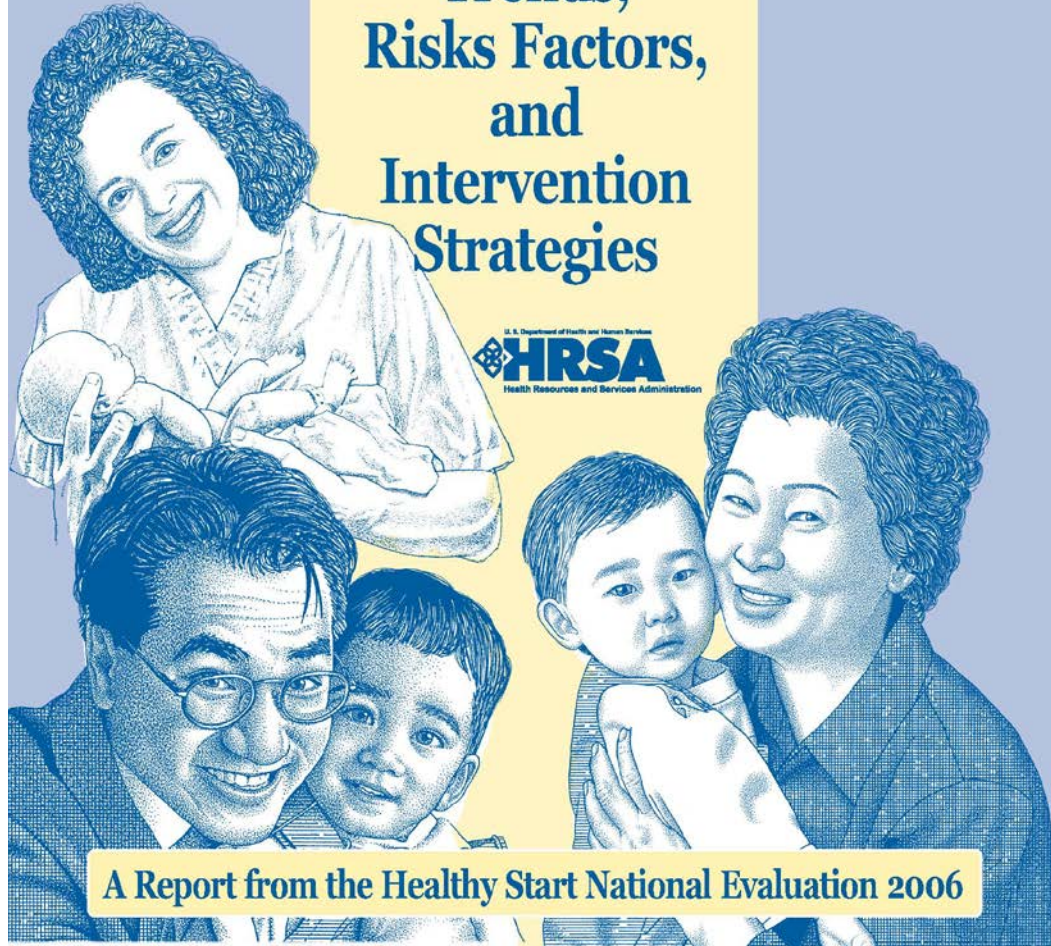
- Enhanced community participation in systems change
- Increased integration of prenatal, primary care, and mental health services
- Increased identification of perinatal depression
- Policy change
- Sustained improvement in access to care and service delivery systems

Community Participation



Racial and Ethnic Disparities in Infant Mortality:

Evidence of Trends, Risks Factors, and Intervention Strategies



A Report from the Healthy Start National Evaluation 2006



A Profile of Healthy Start
**Findings From
Phase I
of the Evaluation
2006**



HEALTHY START AND PERINATAL SERVICES

Healthy Women

↓
Healthy Infants

↓
Healthy Families

↓
Healthy Communities

↓
Healthy Nation



CONTACT

Maribeth Badura

Director,

Division of Healthy Start and Perinatal Services

Maternal and Child Health Bureau

Health Resources and Service Administration

Department of Health and Human Services

5600 Fishers Lane

Room 18-12, Parklawn Building

Rockville, MD 20852

maribeth.badura@hrsa.hhs.gov

Health Resources and Services Administration
Maternal and Child Health Bureau

