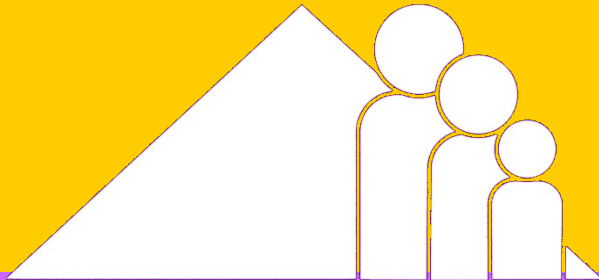


SACIM
Presentation
January, 2008

Health Resources And Services Administration
Maternal And Child Health Bureau

Peter C. Van Dyck, MD, MPH



MCHB

BUDGET 2008

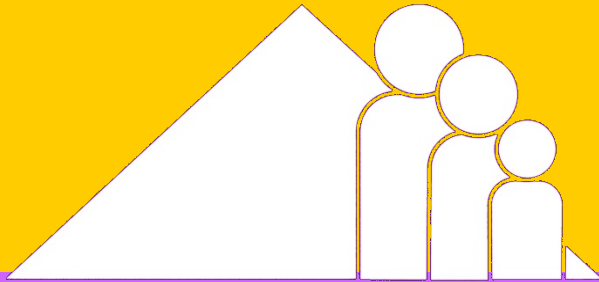
JANUARY 2008





The MCH Bureau Authorizing Legislation

- MCH Services Block Grant (*Title V, Social Security Act*)
- Traumatic Brain Injury (*Section 1252 and 1253 Public Health Service Act*)
- Healthy Start (*Title III, Public Health Service Act, Section 330H*)



The MCH Bureau Authorizing Legislation

- Emergency Medical Services Children (*Section 1910, Public Health Service Act*)
- Newborn Hearing Screening (*Title III, Public Health Service Act, Section 399M*)



The MCH Bureau Authorizing Legislation

- Sickle Cell Service Demonstration Program (*Section 712(c) of the American Jobs Creation Act of 2004*)
- Family to Family Health Information Centers (*Section 501(c)(1)(A) of the Social Security Act*)



MCH Formula and Allocation

- Whenever the total appropriation exceeds \$600 million;
 - 12.75% of the amount is used to fund the Community Integrated Service System (CISS) set-aside program
 - Remainder is allocated as 85% to States and 15% retained by the Secretary for SPRANS projects

MCH Budget for 2007 and 2008 (millions)

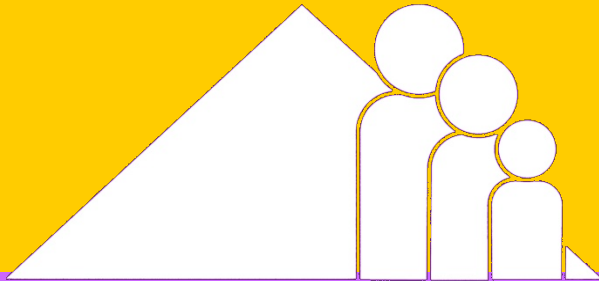
	FY2007	2008(PB)	2008(H)	2008(S)	2008(APPR)
MCHBG	\$693.0	\$693.0	\$750.0	\$673.0	\$666.2
State	\$566.5	\$578.9	\$568.9	\$566.5	\$556.6
SPRANS	\$99.9	\$102.2	\$100.4	\$79.9	\$78.6
CISS	\$10.6	\$11.9	\$10.1	\$10.6	\$10.4
Earmark	\$16.0	-----	\$70.6	\$16.0	\$20.6

MCH Budget for 2007 and 2008 (millions)

	FY2007	2008(PB)	2008(H)	2008(S)	2008(A)
Healthy Start	\$101.5	\$100.5	\$120.0	\$101.5	\$97.4
Hearing	\$9.8	-----	\$11.0	\$12.0	\$11.5
EMSC	\$19.8	-----	\$22.3	\$20.0	\$19.0
TBI	\$8.9	-----	\$8.9	\$10.0	\$8.5
Sickle Cell	\$2.2	\$2.2	\$2.2	\$3.2	\$2.7
Family to Family	\$3.0	\$4.0	\$4.0	\$4.0	\$4.0
Autism	-----	-----	\$0.0	\$37.0	\$35.5

MCH Budget for 2007 and 2008 (millions)

	2007	2008(PB)	2008(H)	2008(S)	2008(A)
SPRANS Earmarks					
Oral Health	\$4.80	\$0.0	\$12.0	\$4.8	\$4.72
Sickle Cell	\$3.84	\$0.0	\$4.0	\$3.84	\$3.77
Epilepsy	\$2.88	\$0.0	\$5.8	\$2.88	\$2.83
Genetics	\$1.92	\$0.0	\$3.8	\$1.92	\$1.89
Mental Health	\$1.54	\$0.0	\$0.0	\$0.0	\$0.0
Fetal Alcohol	\$0.99	\$0.0	\$0.0	\$0.99	\$0.97
1rst Mother	-----	-----	-----	\$1.54	\$1.51
Prepare Birth	-----	-----	\$15.0	-----	\$4.9
Autism	-----	-----	\$30.0	-----	

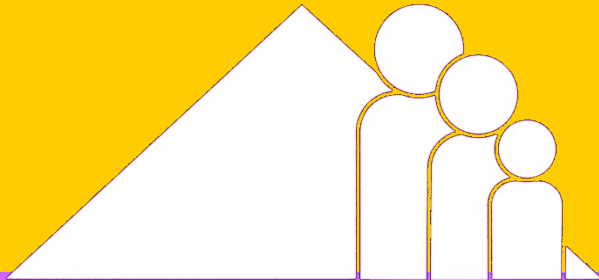


MCH BUREAU

MCHB TIMELINE

JANUARY 2008





Why Develop an MCH Timeline?

- Wisdom of the past helps us make better decisions today
- MCH History provides us with:
 - A common frame of reference
 - A shared identity
 - A source of inspiration

http://www.mchb.hrsa.gov/timeline

HRSA - MCH Timeline: History, Legacy and Resources for Education and Practice - Mozilla Firefox

File Edit View Go Bookmarks Tools Help

http://mchb.hrsa.gov/timeline/index.shtml

HRSA - MCH Timeline: History, Legac... FogBugz

HRSA U.S. Department of Health and Human Services
Health Resources and Services Administration
Maternal and Child Health Bureau

Home
Questions?
Order Publications

SEARCH

GRANTS | FIND HELP | SERVICE DELIVERY | DATA | HEALTH SYSTEM CONCERNS | ABOUT HRSA

Select Filter: Both Public health and medicine Government and policy

In Depth Issues: Select One...

Search Pinpoints: Baker Go

1798: Marine Hospital Service

1800: Smallpox vaccination in the U.S.

1790 1800

Print this page

MCH Timeline: History, Legacy and Resources for Education and Practice

Welcome to the MCH Timeline which traces the history of maternal and child health in the U.S., provides in-depth modules on topics such as MCH 101, MCH Systems of Care, Infant Mortality and MCH Performance and Accountability, and allows you to search for topical areas of interest to you.

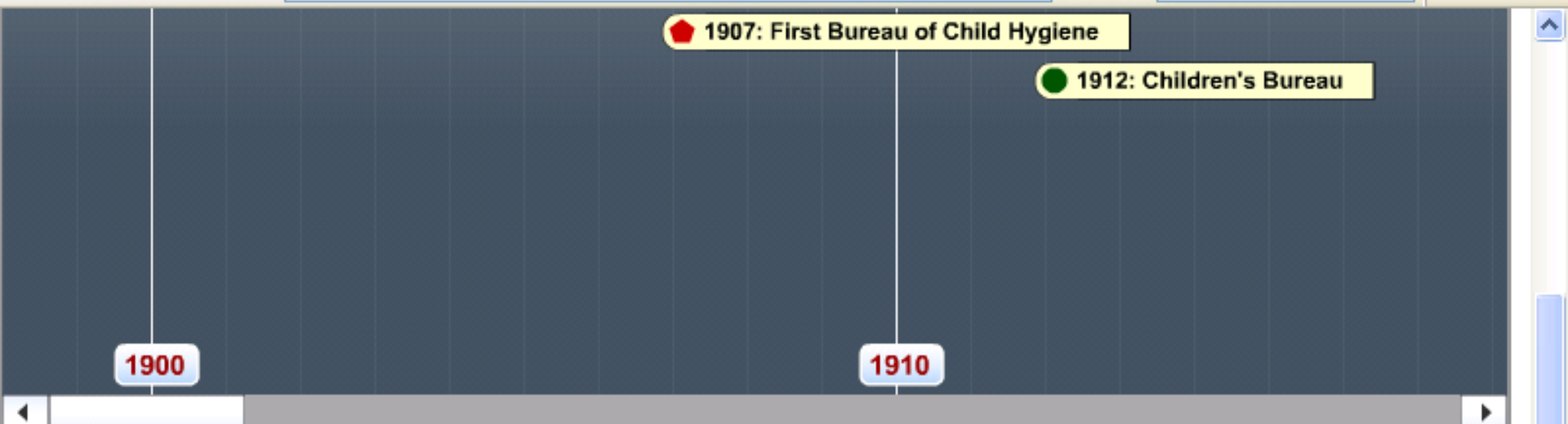
MCH Timeline- Historical Markers

The screenshot shows the MCH Timeline website interface. At the top, the URL is <http://www.mchb.hrsa.gov/timeline/>. The page title is "Maternal and Child Health Bureau". Navigation links include GRANTS, FIND HELP, SERVICE DELIVERY, DATA, HEALTH SYSTEM CONCERNS, and ABOUT HRSA. The main content area features a "Select Filter:" section with options for "Both", "Public health and medicine", and "Government and policy". The "In Depth Issues:" section has a dropdown menu set to "Select One...". The "Search Pinpoints:" section includes a search box and a "Go" button. The timeline itself is a horizontal axis with various historical markers. A pop-up window is open for the "Brown v. Board of Education" event, which occurred on May 17, 1954. The pop-up contains a photograph of a classroom and a text description: "On May 17, 1954 the Supreme Court announced its decision that 'Segregation of white and Negro children in the public schools of a State solely on the basis of race, pursuant to state laws permitting or requiring such segregation, is unconstitutional.'" Other visible markers include "1951: American Cancer Society established", "1950: Mid-Century Welfare Reform Act established", "1951: National School Lunch Act", "1950: Infant Care Program", "1951: Polio Vaccine Developed", "1961: Panel on Mental Retardation", "1961: Phenylketonuria (PKU) Detection", "1963: Measles Vaccine Licensed", "1965: Medicare & Medicaid", "The Vietnam War", and "War on Poverty".

[Print this page](#)

MCH Timeline: History, Legacy and Resources for Education and Practice

Welcome to the MCH Timeline which traces the history of maternal and child health in the U.S., provides in-depth modules on topics such as MCH 101, MCH Systems of Care, Infant Mortality and MCH Performance and Accountability, and allows you to search for topical areas of interest to you.



[Home](#) /

[Print this page](#)

MCH Public Health 101

In the timeline above you will find events along the timeline that relate specifically to Public Health 101. Click on any event to learn more about the specifics of that event. To return to this MCH Public Health 101 introduction page click the "MCH Public Health 101" link just below the timeline interface on the left hand side. Below are chapter headings for the MCH Public Health 101 narrative that provides an overview of this topic. Click on a specific chapter, or view the chapters in order by starting with the "Introduction" chapter.

- [Introduction](#)
- [A Brief History of MCH in the United States](#)
- [The Title V Maternal and Child Health \(MCH\) Program Today](#)
- [The Maternal and Child Health Bureau \(MCHB\)](#)
- [Requirements of the MCH \(Title V\) Block Grant](#)
- [A National System to Monitor the Health of MCH Populations](#)
- [The MCH Pyramid](#)
- [MCHB Strategic Plan](#)
- [Selected Readings and Web Resources](#)

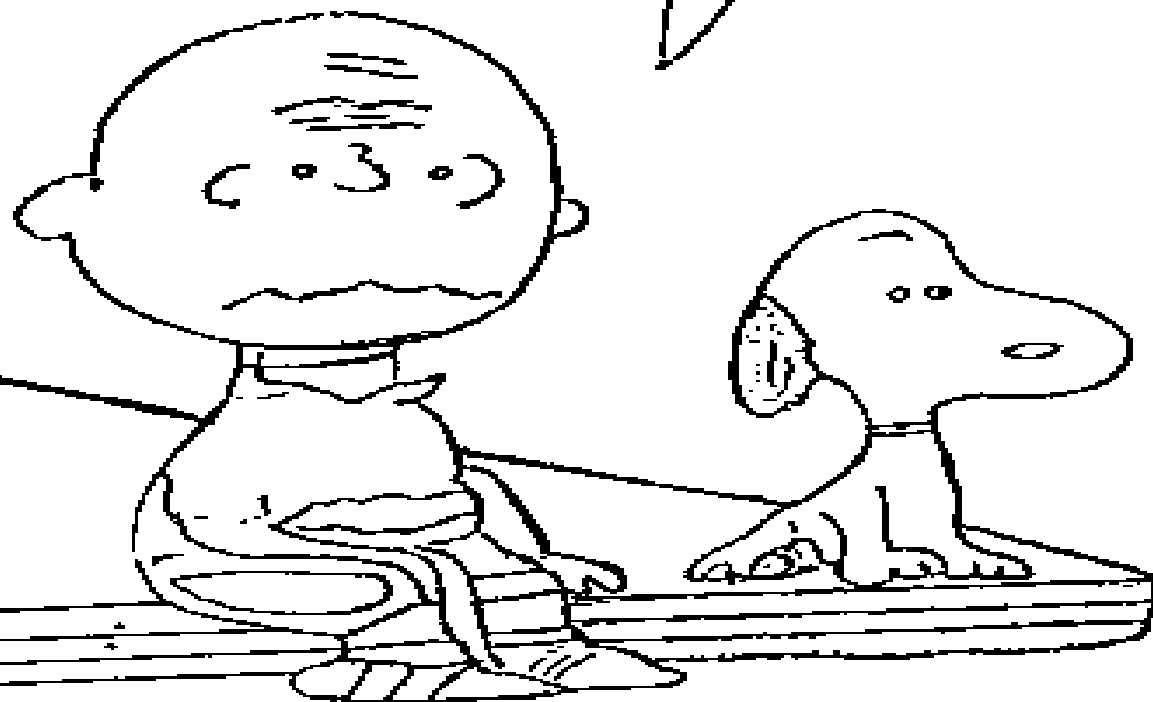


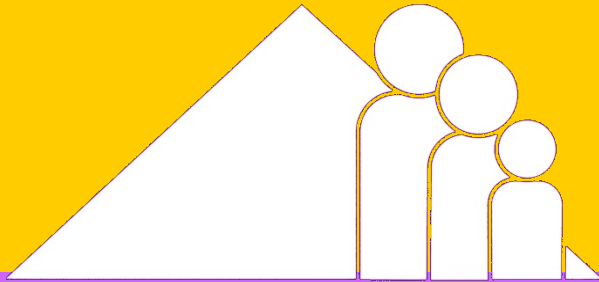
How Can I Use this Site?

- Orientation for new faculty
- Orientation for new trainees
- Preparation for Speaking to Community Groups
- Personal Rejuvenation and Inspiration

DOING A GOOD JOB
HERE IS LIKE
WETTING YOUR PANTS IN A
DARK SUIT —

IT GIVES YOU A WARM
FEELING BUT NOBODY
NOTICES.





Contact

Peter C. van Dyck, M.D., M.P.H.

HRSA/MCHB

<http://mchb.hrsa.gov/>

