



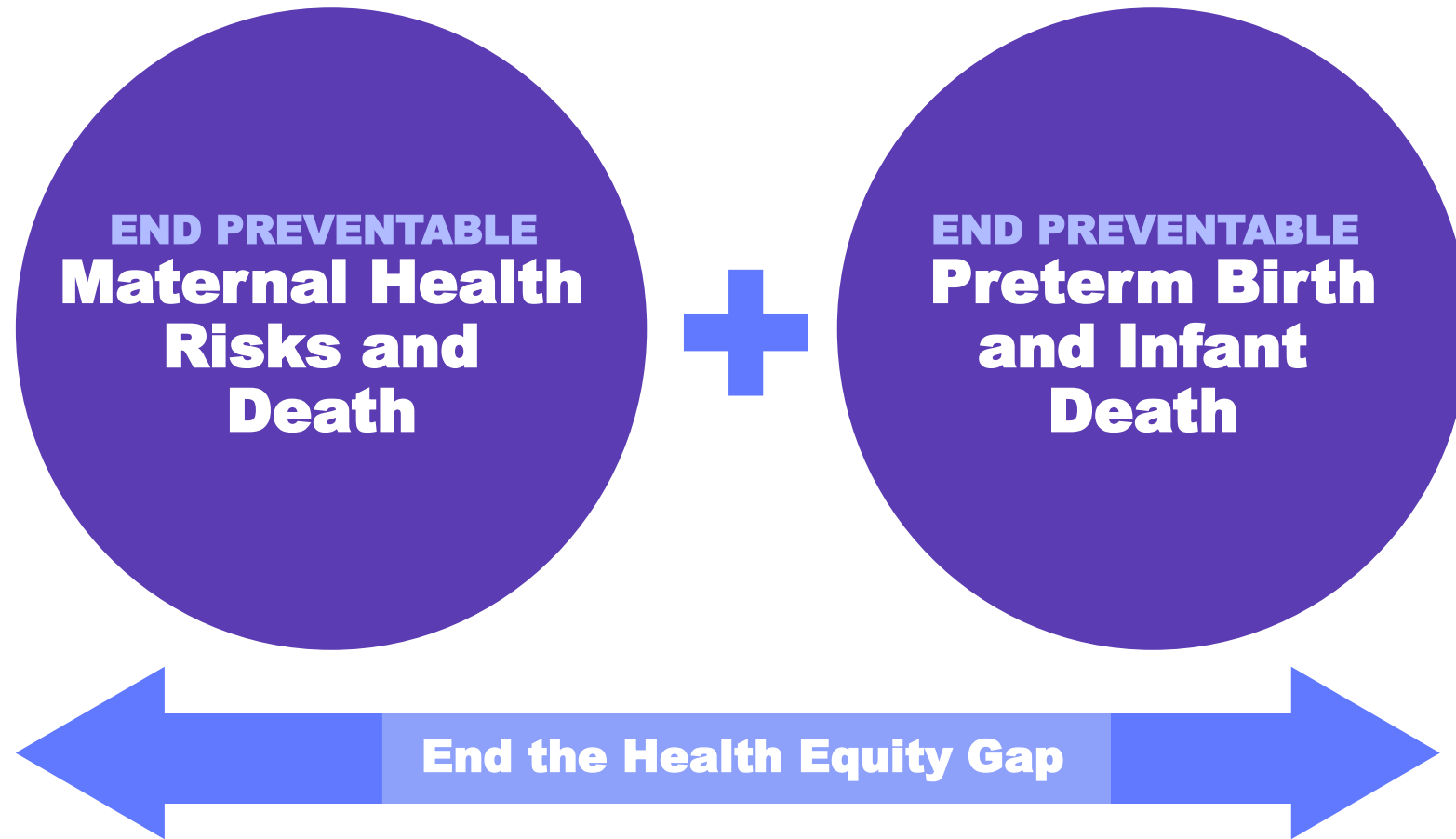
MATERNAL - INFANT HEALTH AND COVID-19

**UPDATE FOR THE SECRETARY'S ADVISORY
COMMITTEE ON INFANT MORTALITY**

RAHUL GUPTA, MD, MPH, MBA, FACP
Chief Medical & Health Officer, Senior Vice
President, Interim Chief Science Officer

Wednesday, June 17, 2020

March of Dimes Mission

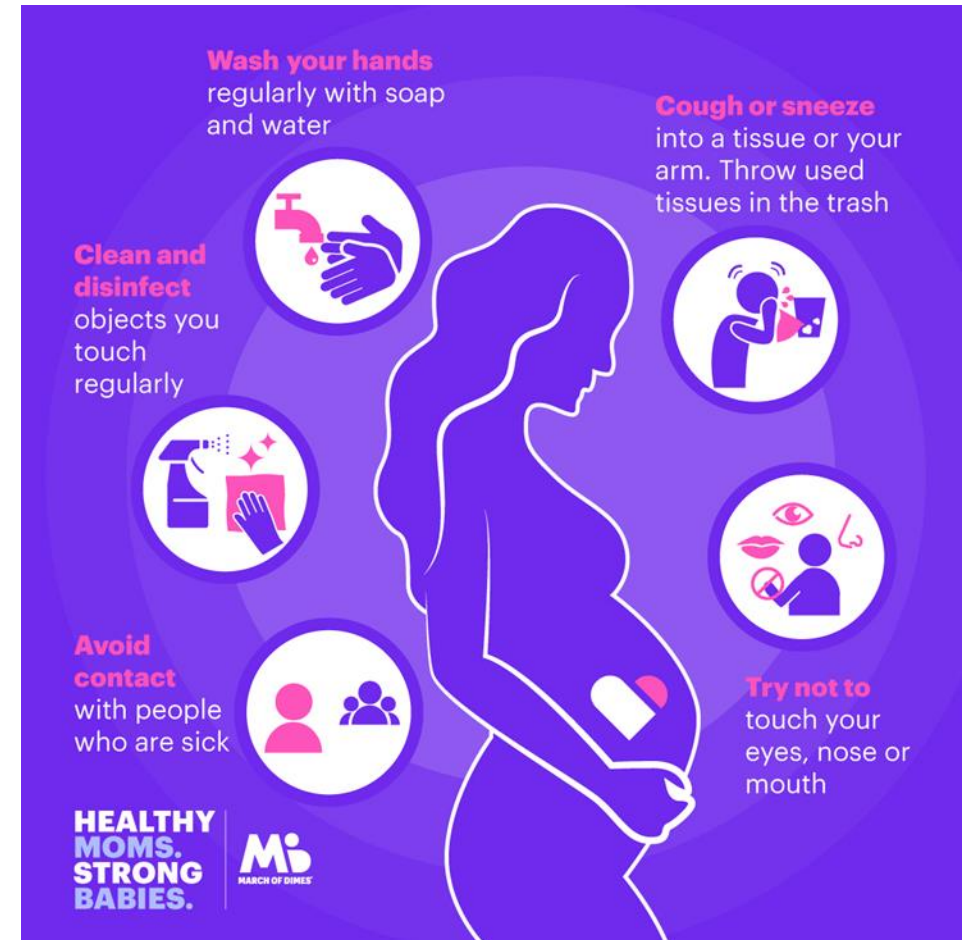


FOR HEALTHY MOMS. STRONG BABIES.

MOMS, BABIES, AND COVID-19

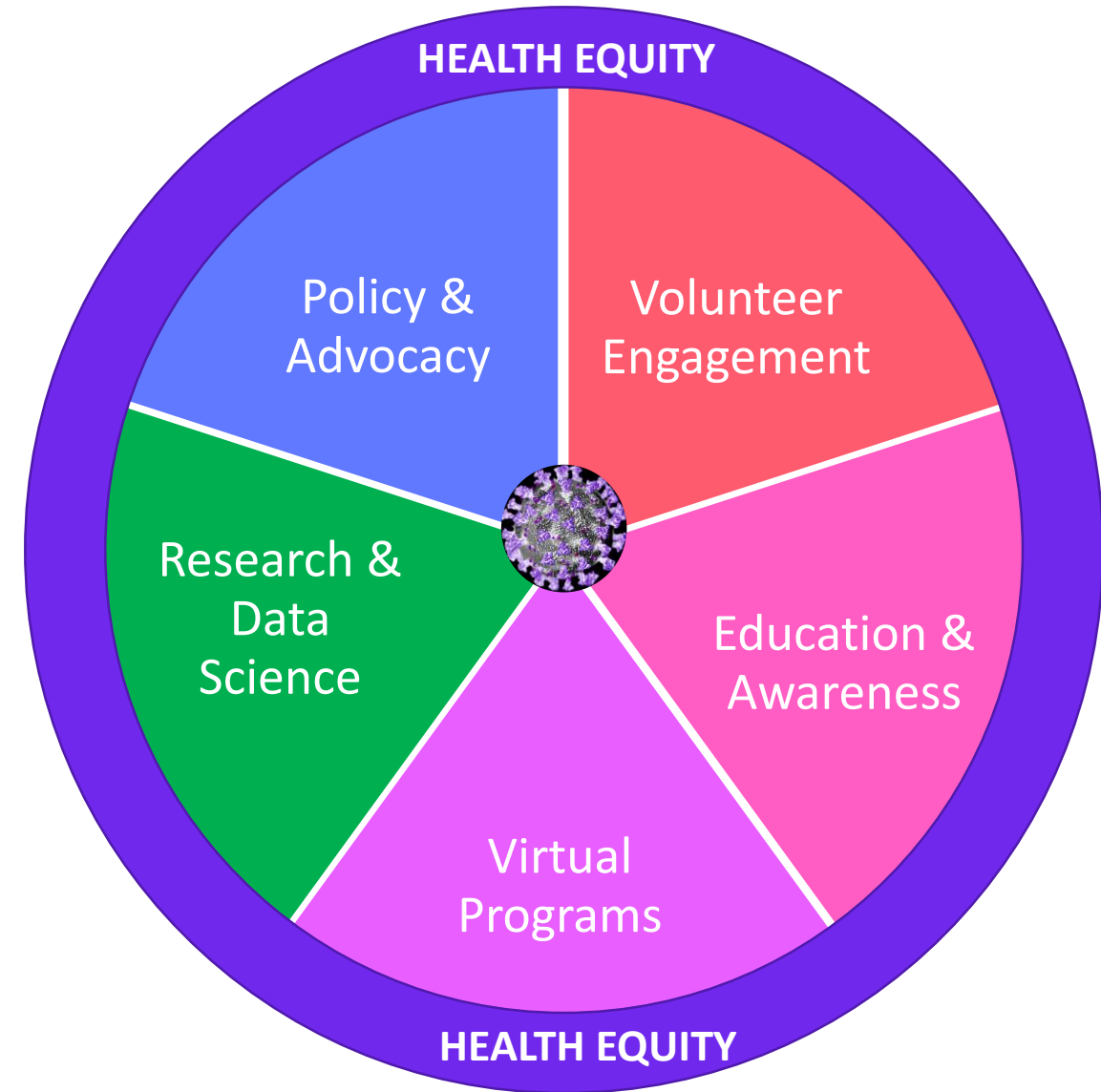
WHAT DO WE KNOW?

- Limited pregnancy-specific data
- Pregnant people are at equal risk as the rest of the population for contracting COVID-19 **BUT** pregnant people are at a higher risk for serious complications
- Vertical transmission has not been demonstrated **BUT** cases of babies born to COVID-19 mothers and contracting the virus soon after birth have been recorded
- Limited data suggests that COVID-19 does not transmit through breastmilk and mothers are encouraged to breastfeed using droplet protection, or pump regardless of COVID-19 status
- Pregnant people should continue their routine prenatal care



March of Dimes is:

- **Advocating** for improved research and data surveillance
- **Engaging** and **educating** both professionals and consumers on the latest in COVID-19 information & provided **thought leadership** on some of the most pressing COVID-19 issues
- **Virtualizing** Programs to support moms before, during and after pregnancy
- Supporting **Research** and data collection efforts with national and international partners
- Through our **COVID-19 Intervention and Support Fund**, to support research, fund programs and deliver supplies to families and healthcare professionals





NEW! BREAKING THROUGH IMPLICIT BIAS IN MATERNAL HEALTH CARE

A TRAINING FOR HEALTH CARE PROVIDERS

OBJECTIVE

Increase awareness of implicit bias and stimulate action among maternity care providers to address and remedy impact.

IMPACT

Greater awareness and action to address implicit and explicit bias in maternity care settings.

COMPONENTS

- ✓ Implicit Bias in Maternal Healthcare
- ✓ Structural Racism in the U.S.
- ✓ Strategies to Mitigate Implicit Bias
- ✓ Creating a Culture of Equity

CHALLENGES

We may expect to see higher preterm birth rates, higher severe maternal morbidity and further declines in fertility

Lack of real-time data surveillance of pregnant women and their babies

Inadequate testing capacity across the country

Enrollment of pregnant and lactating women in vaccine and drug trials

Inequitable burden of disease in both preterm birth and COVID-19 hospitalizations and deaths between race/ethnic groups

Opportunities



RESEARCH

- Develop a surveillance system that track both real-time and long term disease impact on pregnant women and babies
- Advocate to include pregnant and lactating women in vaccine and therapeutics trials



POLICY

- Expand and extend coverage under Medicaid across the country
- Increase funding in federal and state budgets for improvements in data collection
- Expand broadband access to address maternity care desert challenges



EQUITY

- Increase the use of telemedicine for both prenatal and postpartum care
- Address the social determinants of health that increase the burden of infectious diseases on certain populations



**WHAT'S
NEXT?**