

ASTHO Health Equity and Preterm Birth

August 11, 2015

Ellen Pliska, MHS, CPH

Family and Child Health Director

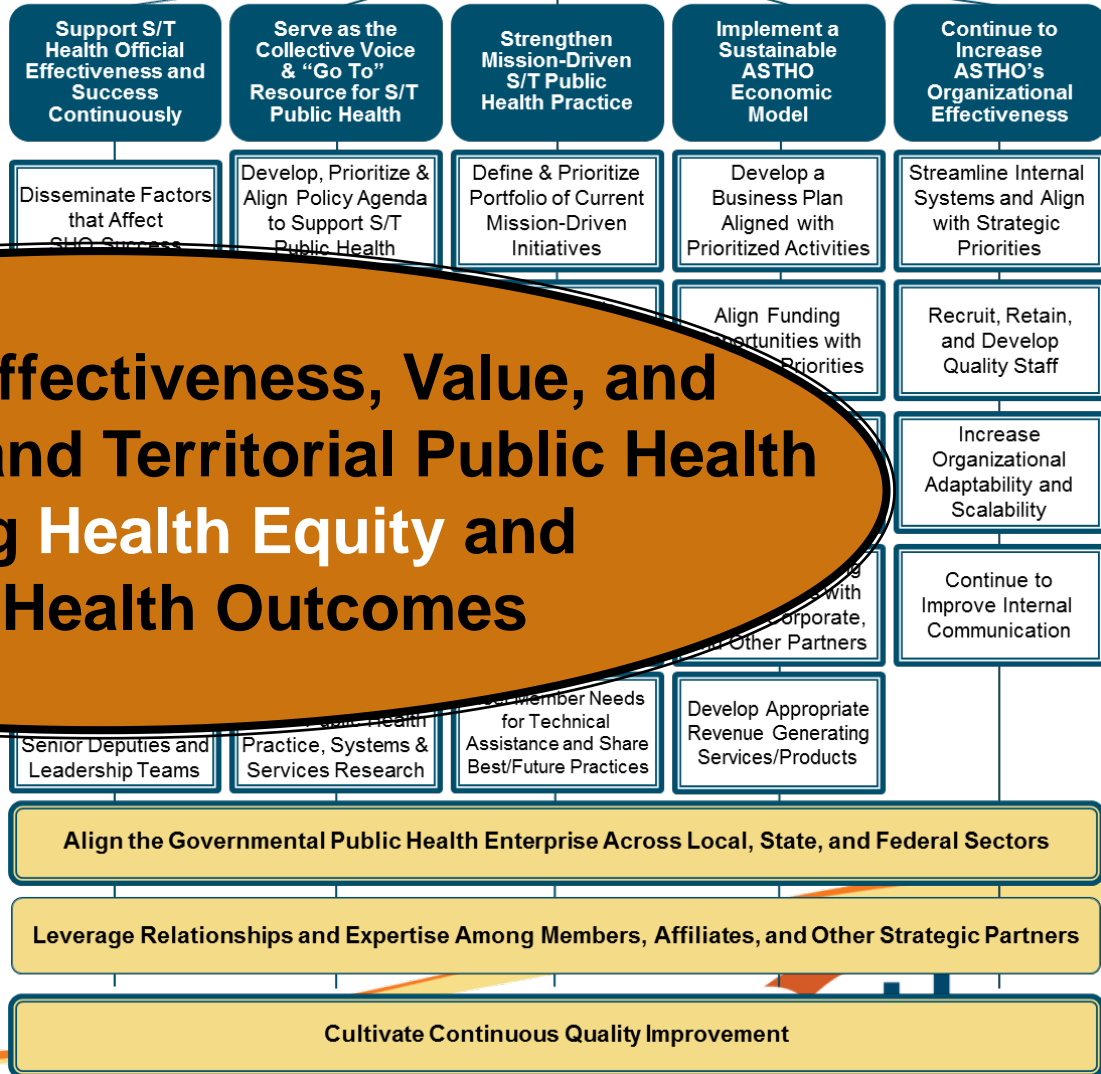


Agenda

- Strategic Map
 - Health Equity Goals
 - Objectives
- ASTHO Policy
 - Health Equity President's Challenge
 - Access Policy Committee
 - Healthy Babies Subcommittee
- Ongoing coordinated projects
 - Tobacco Cessation Before During and After Pregnancy
 - Racism and MCH

ASTHO Strategic Map Central Challenge:

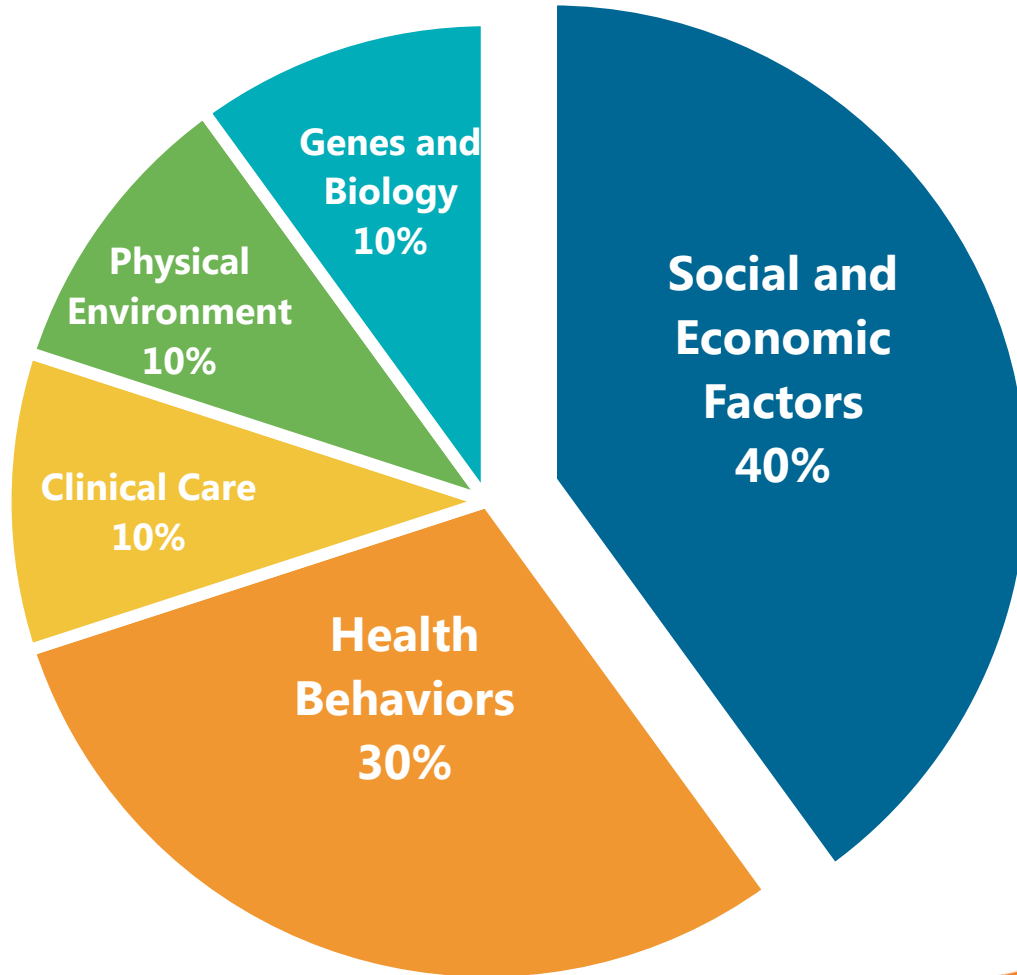
Strengthen the Effectiveness, Value, and Relevance of State and Territorial Public Health in Promoting Health Equity and Improving Health Outcomes



Strengthen the Effectiveness, Value, and Relevance of State and Territorial Public Health in Promoting **Health Equity** and Improving Health Outcomes

Expand our Understanding about What Really Creates Health

Determinants of Health



Determinants of Health Model based on frameworks developed by: Tarlov AR. *Ann N Y Acad Sci* 1999; 896: 281-93; and Kindig D, Asada Y, Booske B. *JAMA* 2008; 299(17): 2081-2083.

Health Equity President's Challenge

- September 2015, Dr. Edward Ehlinger (MN) will launch the President's Challenge on Health Equity
- Expand our understanding of what creates health
- Promote health in all policies approach with health equity as the goal
- Strengthen capacity of communities to create their own healthy futures

Access Policy Committee

- Access to health services, particularly for vulnerable and at-risk populations
- Access to Health Services Policy Statement
“Access to health services is essential to the well-being of all Americans.”
- Position Statements: Access to Reproductive Health Services; Improving Birth Outcomes; Maternal Mortality and Morbidity

Healthy Babies Subcommittee

- Reduce infant mortality and morbidity in the US through comprehensive system change.
 - Cross-cutting activities
 - Official subcommittee of APC

- Goals
 - Reducing preterm birth
 - Preventing unintended pregnancies
 - **Reducing health disparities**
 - Celebrate accomplishment of Healthy Babies Challenge

ASTHO Recommendations for State and Territorial Health Agencies

Smoking Cessation Strategies for Women
Before, During, and After Pregnancy
Recommendations for State and Territorial Health Agencies



astho™

- Role of state and territorial health agencies
- 8 recommendations on quitting before, during, and after pregnancy
- 10 State Success Vignettes
- Resources

astho™

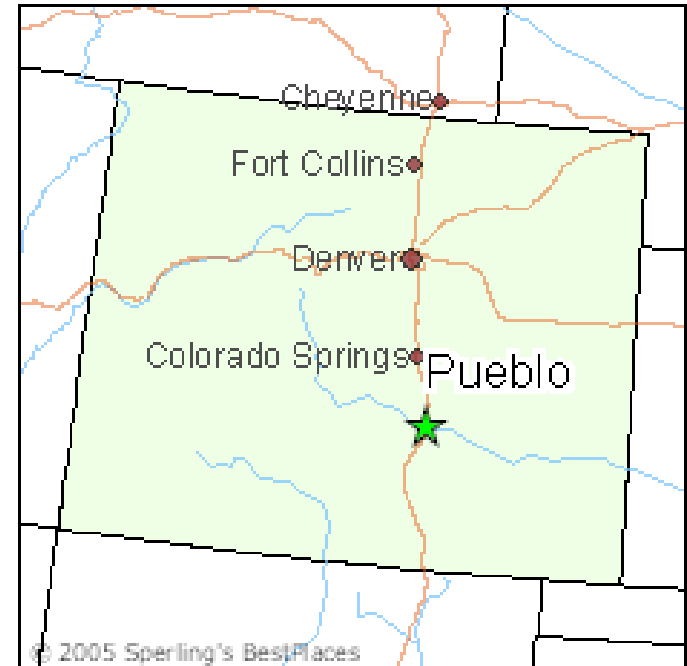
Evidence-Based Tobacco Control Policies

- Work with housing agencies to promote smoke-free home policies, especially in multi-unit housing.
- Cigarette prices
- Smoking bans: worksites, public spaces, environments affecting pregnant women and new moms (e.g. educational facilities), and commercial and home-based day care settings
 - California has local ordinances on smoking bans in multi-unit housing and some single units

State Policy Example: Colorado

- Birth outcomes in Pueblo significantly reduced the odds of:
 - Maternal smoking (38%)
 - Pre-term births (23%)
- Birth outcomes in El Paso showed no change.
- *Smoking bans have a significant and immediate positive impact on the health of infants and mothers.*

Colorado

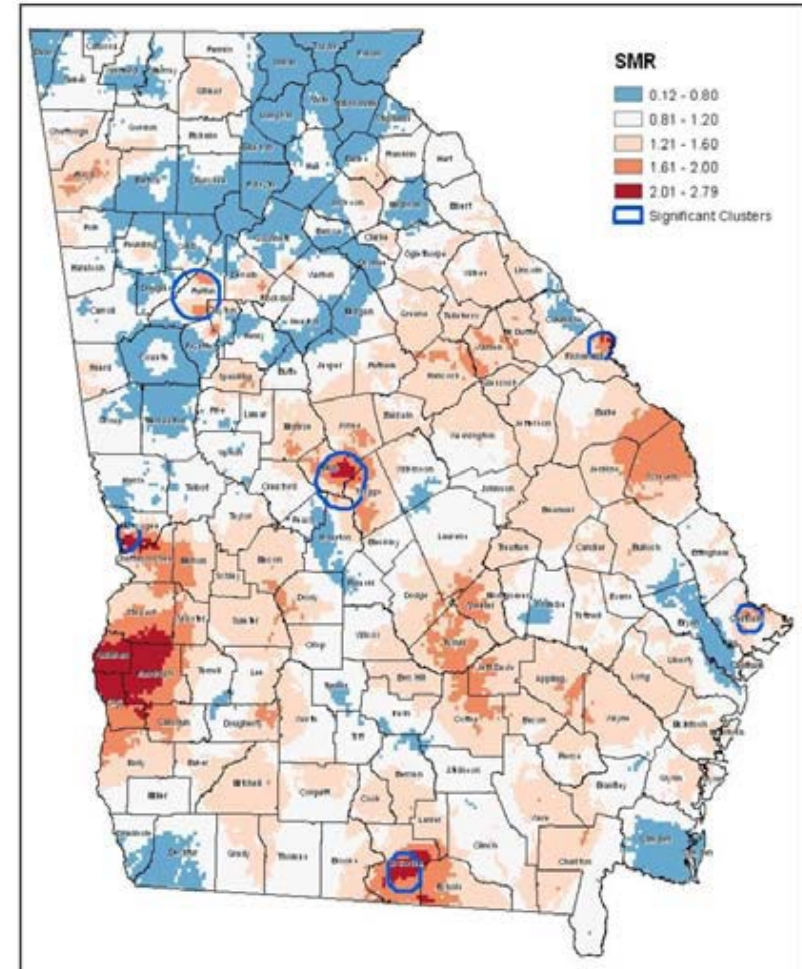


MCH and Health Equity

- Health inequities contribute \$1.24 trillion in indirect medical costs
 - 30 percent of direct medical care expenditures for racial and ethnic minorities
- ASTHO goals for S/THOs:
 - Partner with multi-sector agencies, providers, and communities
 - Develop a culture of improving the health and closing gaps between groups
 - Create a unified message
 - Develop clear measurements to evaluate targeted progress

Georgia 1x1 Mile Infant Mortality Clusters

- Identified six significant geographic cluster of infant mortality
 - One square mile cluster crossed four county lines; never been identified with traditional methods using county lines as cutoff points
- Compared leading causes of infant death and the prevalence of modifiable risk factors for the state versus the identified clusters

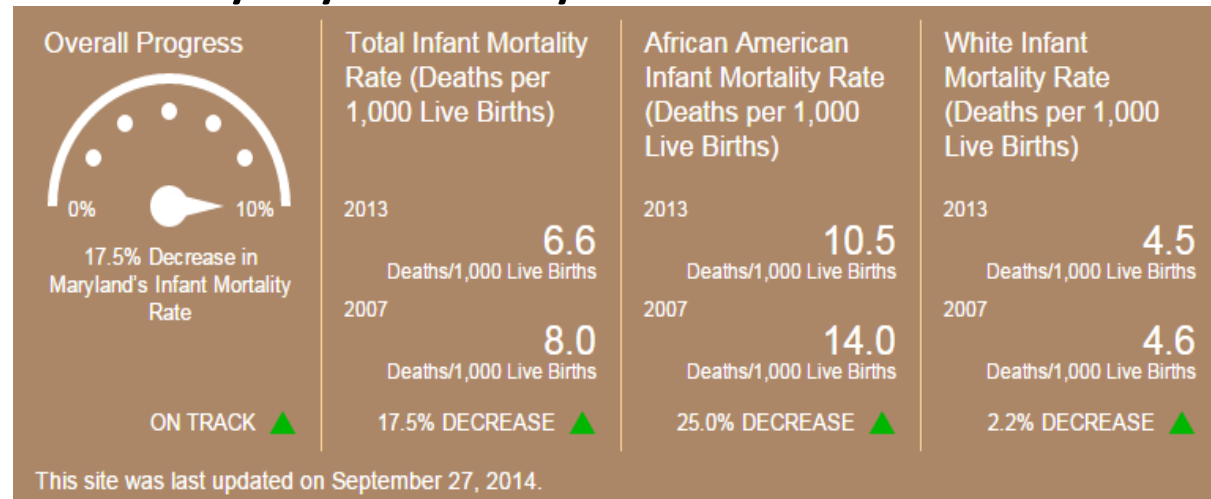


Maryland Goal: Reduce Total & Black Infant Mortality by 10% by 2017

- State goal: reduce infant mortality by 10% by 2012
 - Goal was reached in 2009 but not for all groups
- 2012 Goal: Reduce infant mortality by an additional 10% and Black infant mortality by 10% by 2017

- Reductions:
 - Total: 17.5%
 - Black: 25.0%
 - White: 2.2%

- 23,000 women received comprehensive women's health services in 8 state target areas



*2007 Baseline

Questions to advance health in all policies, strengthen capacity for communities, and create a culture of change:

- What health impacts can we anticipate and who will experience these impacts?
- What do we know about impact(outcome) versus intent of the policy?
- Who is/is not at the decision-making table and who has the power?
- Who is being held accountable and to whom or what are they accountable?

Contact Us

Ellen Pliska, Family and Child Health Director,
epliska@astho.org

ASTHO resources:

- ASTHO Healthy Babies Initiative Clearinghouse:
<http://www.astho.org/healthybabies/>
- ASTHO State Stories:
<http://www.astho.org/Programs/Access/Maternal-and-Child-Health/MCH-Case-Studies-and-Resources/>
- Health Equity:
<http://www.astho.org/programs/health-equity/>
- Tobacco Cessation:
<http://www.astho.org/programs/prevention/tobacco/>