

Thirty Years Later: Revisiting Secretary Heckler's Task Force on Black and Minority Health Report

**Presentation by Kay Johnson, Chairperson
Secretary's Advisory Committee on Infant Mortality (SACIM)
Health Equity Strategy Meeting
March 26-27, 2015**

SACIM 6 Strategic Directions

1. Improve the health of women.
2. Assure safety and high-quality, patient-centered services along the continuum of perinatal care.
3. Redeploy key evidence-based, highly effective preventive interventions to a new generation of consumers and their providers.
4. **Reduce racial/ethnic and income disparities, influence social determinants, and increase health equity through place-based initiatives in higher risk communities and other investments to reduce poverty.**
5. Invest in adequate data, monitoring, and surveillance systems nationwide (national, regional, state, and local levels) to measure access, quality, and outcomes.
6. Optimize the potential of interagency, public-private, and multi-disciplinary collaboration.

Secretary's Task Force on Black and Minority Health

- **Landmark report October 1985, requested by Secretary Margaret Heckler during Reagan Administration**

“...to unravel the complex picture provided by our data and experience, ... established a Secretarial Task Force whose broad assignment was the comprehensive investigation of the health problems of Blacks, Native Americans, Hispanics and Asian/Pacific Islanders.”

...

“It can--it should--mark the beginning of the end of the health disparity that has, for so long, cast a shadow on the otherwise splendid American track record of ever improving health.”

Secretary's Task Force on Black and Minority Health

- Task Force identified six causes of death that together accounted for more than 80 percent of mortality observed among Blacks and other minority groups in excess of that among Whites.
 1. Cancer
 2. Cardiovascular disease and stroke
 3. Chemical dependency, measured by deaths due to cirrhosis
 4. Diabetes
 5. Homicide and accidents (unintentional injuries)
 6. Infant mortality
- Recommendations into six categories in which the Task Force members believed further improvements were urgently needed.
 - Health information and education
 - Delivering and financing health services
 - Health professions' development
 - Cooperative efforts with the non-Federal sector
 - Data development
 - Research agenda

Secretary's Task Force on Black and Minority Health

- *“Recommendations were intended to emphasize the following principles:*
 1. *incorporate minority health initiatives into existing DHHS programs to address health conditions amenable to immediate improvement;*
 2. *press for greater public and private involvement in a common effort to eliminate the health disparity;*
 3. *resolve unanswered questions through a concerted program of research and data collection; and*
 4. *seek new strategies to minimize health inequities between minorities and nonminorities.”*

<http://www.cdc.gov/mmwr/preview/mmwrhtml/00000688.htm>

Secretary's Task Force on Black and Minority Health

Recommendation Areas



1. An outreach campaign



2. Patient education



3. Delivery & financing of services



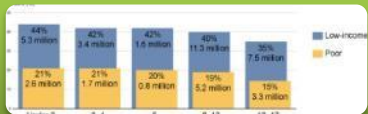
4. Strategies outside federal sector



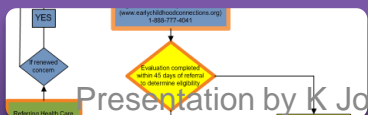
5. Strategies within federal sector



6. Build state and local capacity



7. Improve and use available data



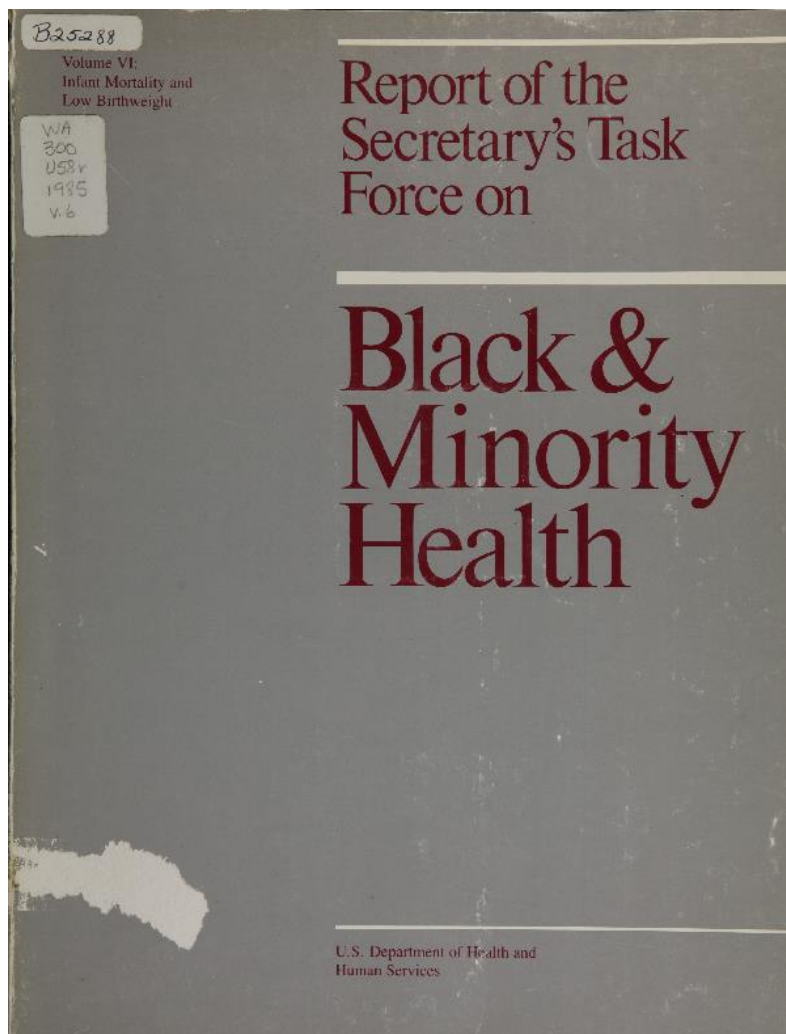
8. Adopt & foster research agenda

Secretary's Task Force on Black and Minority Health

Areas of Research Agenda



Report Volume VI: Infant Mortality



Subcommittee on Infant Mortality and Low Birthweight

- Wendy Baldwin, Ph.D. (chair)
NICHD-NIH
- Marilyn Gaston, M.D., NHLBI-NIH
- Carol Hogue, Ph.D., M.P.H, CDC
- Vince Hutchins, M.D., MCHB-HRSA
- Joel Kleinman, Ph.D., NCHS-CDC
- Herbert Nickens, M.D., staff liaison

Recommendations to reduce disparities in infant mortality and low birthweight

Interplay of social, biological & environmental factors; large prospective studies; and evaluation.

Research

Pregnancy planning

Pre-pregnancy care

Prenatal care

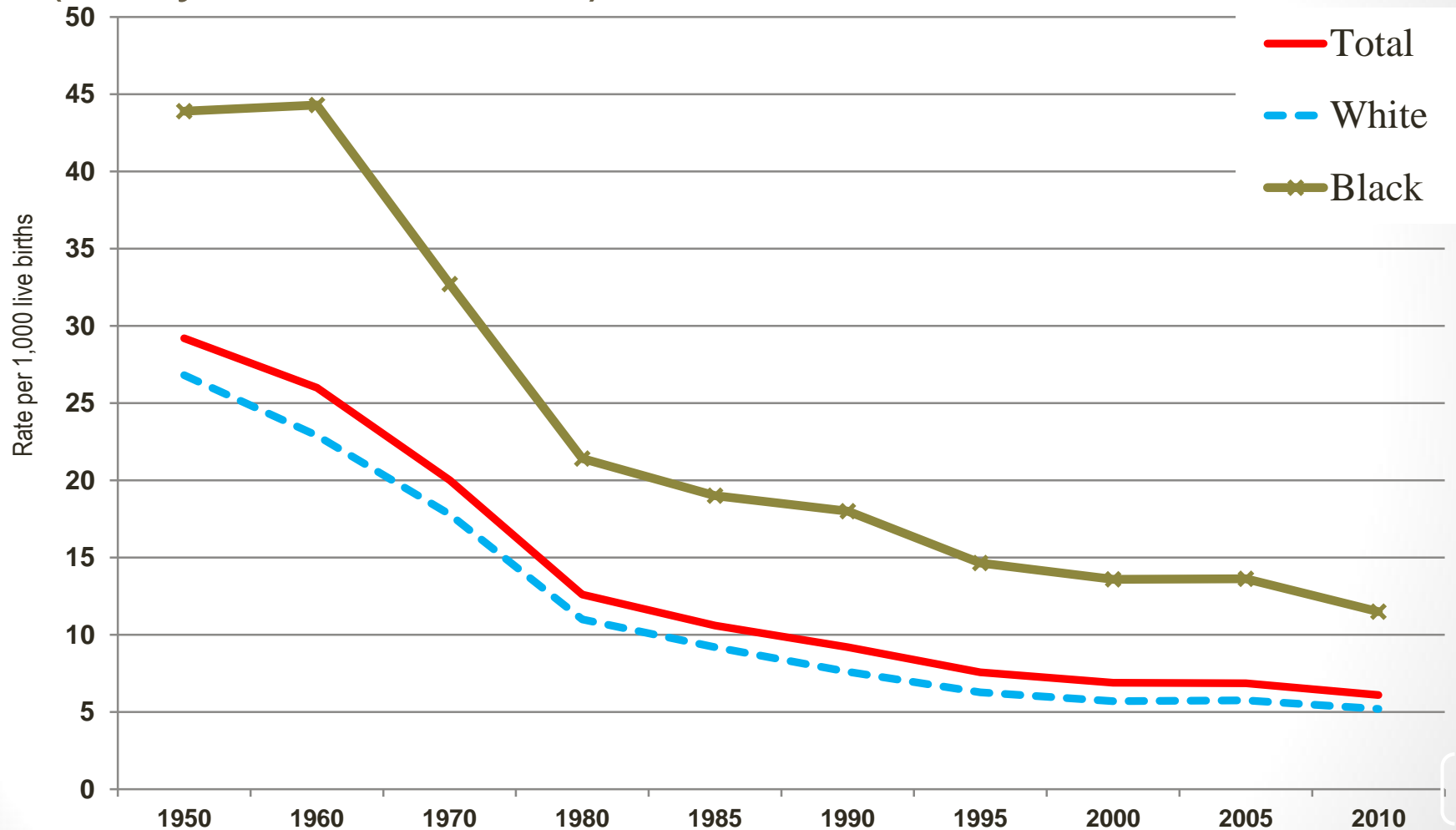
Postnatal factors

Innovative & SPRANS Projects, 1984



Infant Mortality Trend 1950-2010

(In 5-year increments)



Note initial years are by race of child and latter years are by race of mother.

Infant mortality rates by race and ethnicity of mother, US, 2010

