



Timeliness in NBS: The Iowa Perspective

Stanton L. Berberich, PhD

Program Manager – Newborn Screening

State Hygienic Laboratory at The University of Iowa

Presented to the Advisory Committee on Heritable
Disorders in Newborns and Children

May 9, 2018



Facts

- Babies are born **every day**
- **Any baby** can be **born on any day** with a disorder not recognized at birth
- Some of these conditions will be **time-critical** (at risk of a catastrophic event which can result in sudden disability and even death)

Therefore

Unless appropriate structures and processes are in place to treat **everyday the same**, there will be **disparities** based on the particular day of the week a baby is born.

Iowa Response

Since babies are born **everyday**

In Iowa the following happens **everyday**:

- Specimens are collected **everyday**
- Same day delivery of specimens to lab **everyday**
- Specimens are received by the lab and tested **everyday**
- Results are reported **everyday** to Short Term Follow-Up (STFU)
- PCP's are contacted **everyday** by STFU with recommendations to enable appropriate interventions to avoid or minimize harm

How?

- Same day courier service provided 7 days/wk, 365 days/yr
 - Specimens picked up across Iowa **everyday**
 - Specimens delivered to the laboratory in evening **same day**
- Lab open 20 hours/day, 7 days/wk, 365 days/yr
 - Nightshift begin testing the **same day** specimens are delivered and continue through the night
 - Dayshift finishes testing and reports abnormalities **that day**
- STFU scheduled so that recommendations for abnormal results for time-critical conditions can be provided to PCP's **everyday**

But, “How” is not enough!

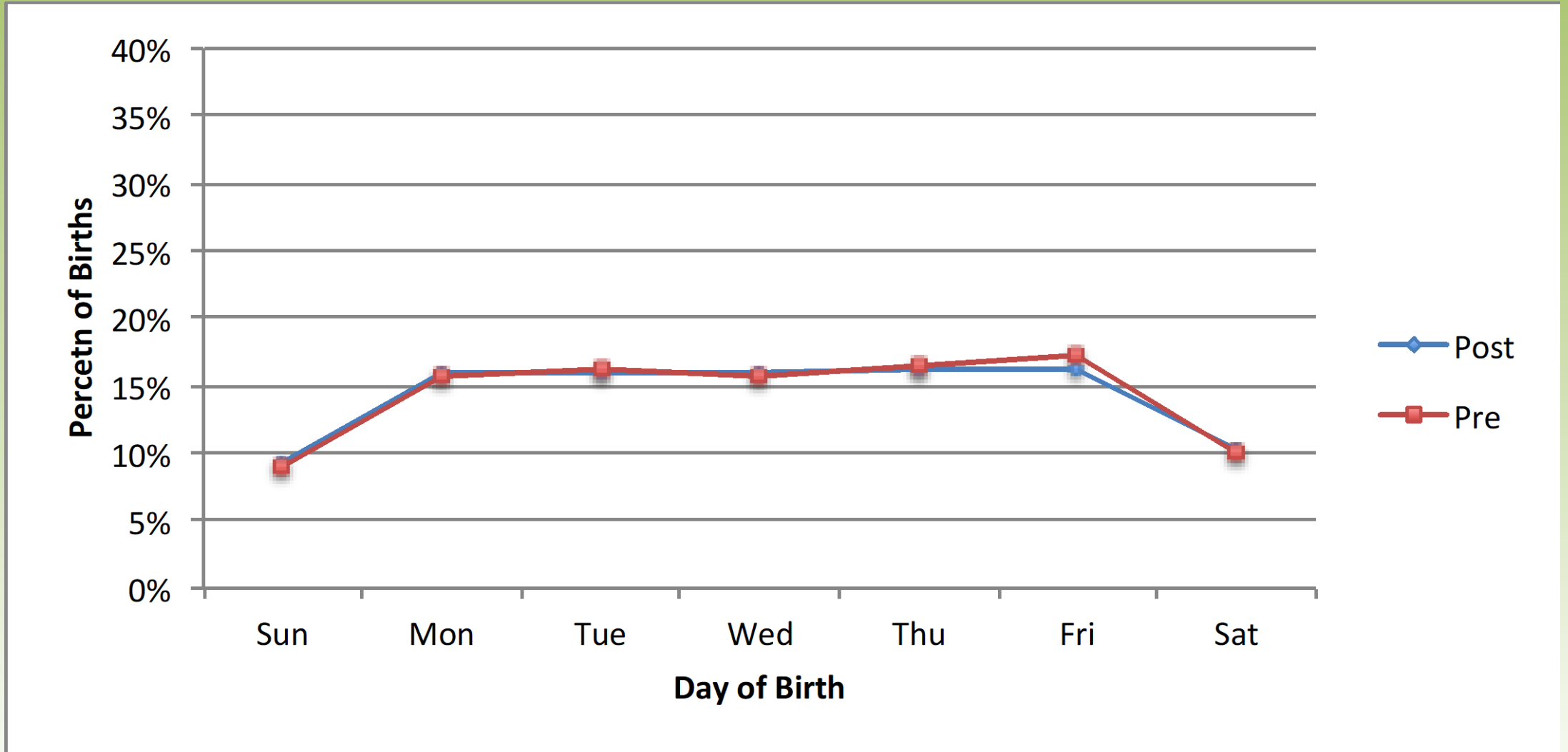
- You need the “**Why?**” -

- We can have great structures in place
- But, unless all participants in the NBS system know about the resources and understand “**the Why?**”, the full potential benefit is not realized.
- It is **NOT enough to TELL** them what to do; **they must understand WHY** what they are doing is critical to the **Outcome**

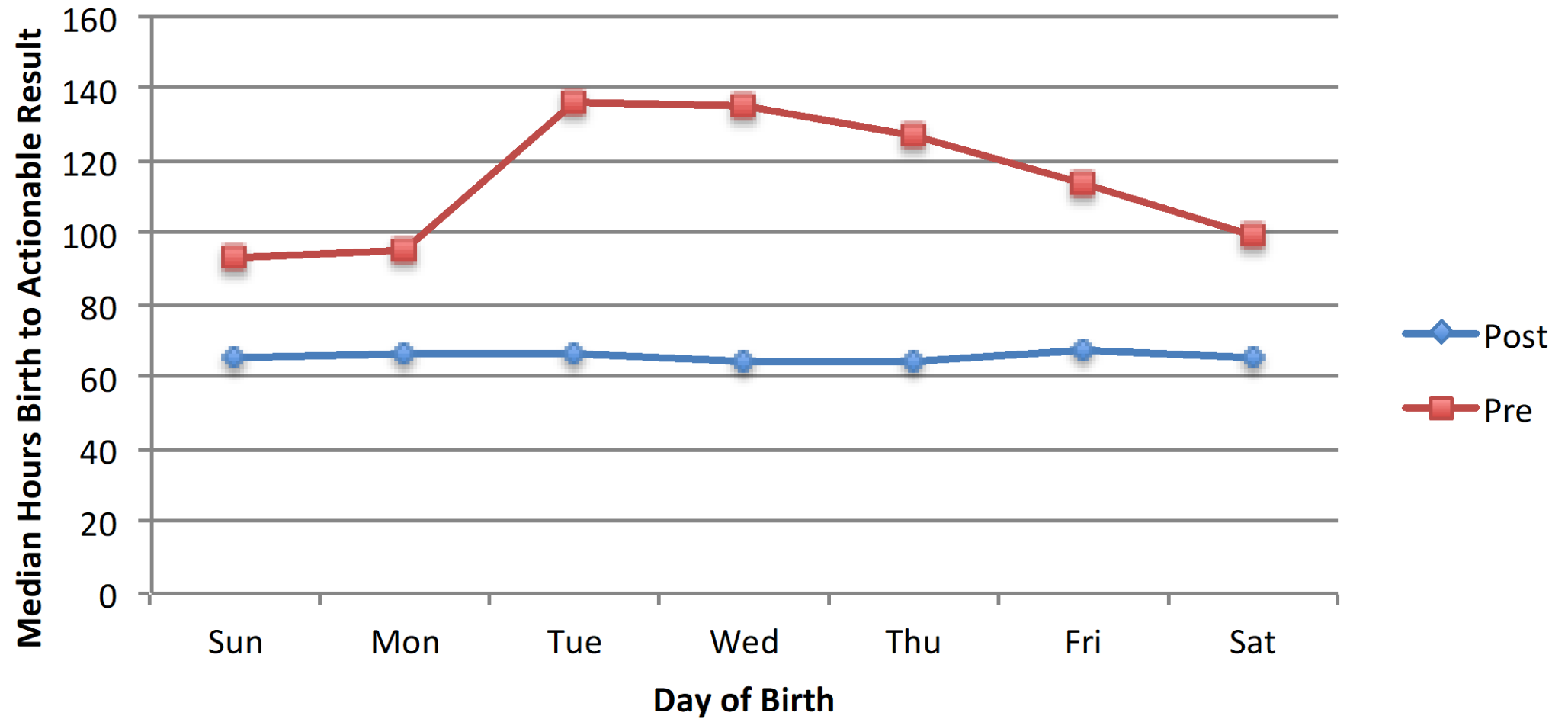
Result

Each baby receives the same opportunity for benefit regardless of the day of the week they were born.

Distribution of Births by Day of Week

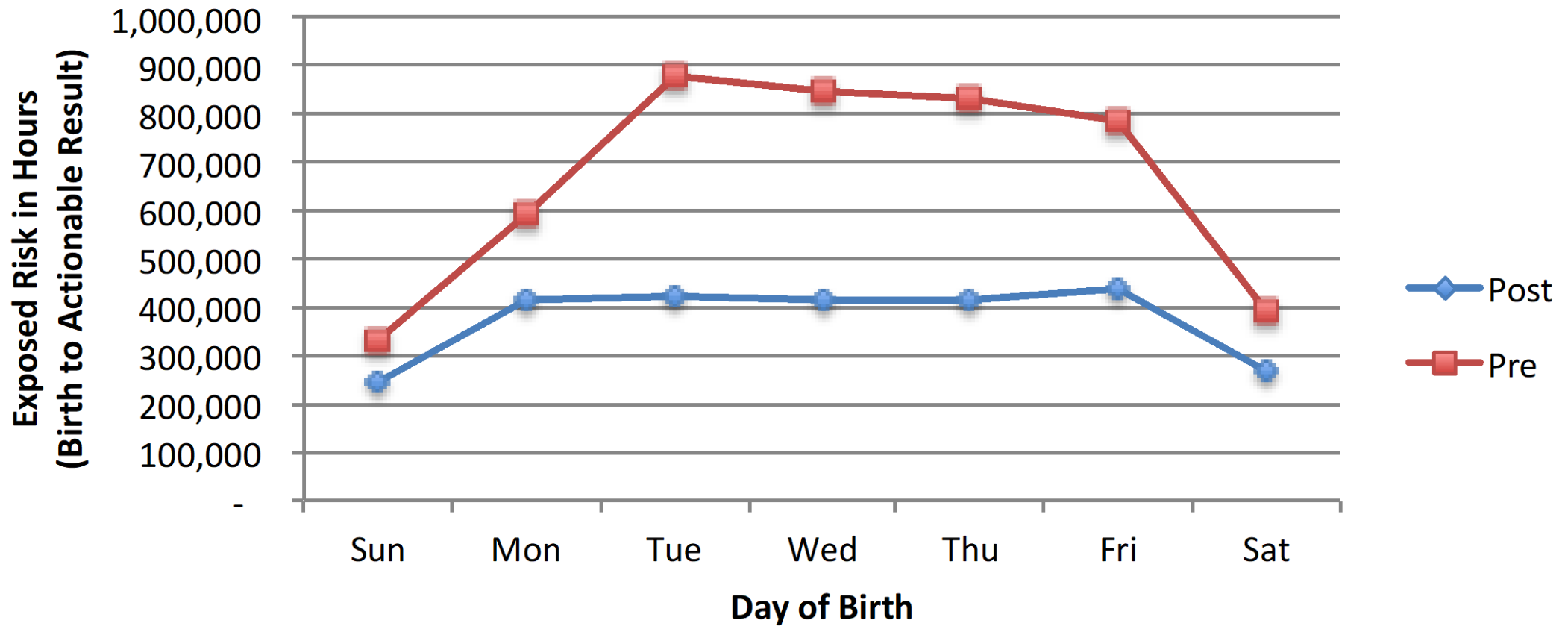


Median Hours: Birth to Actionable Result

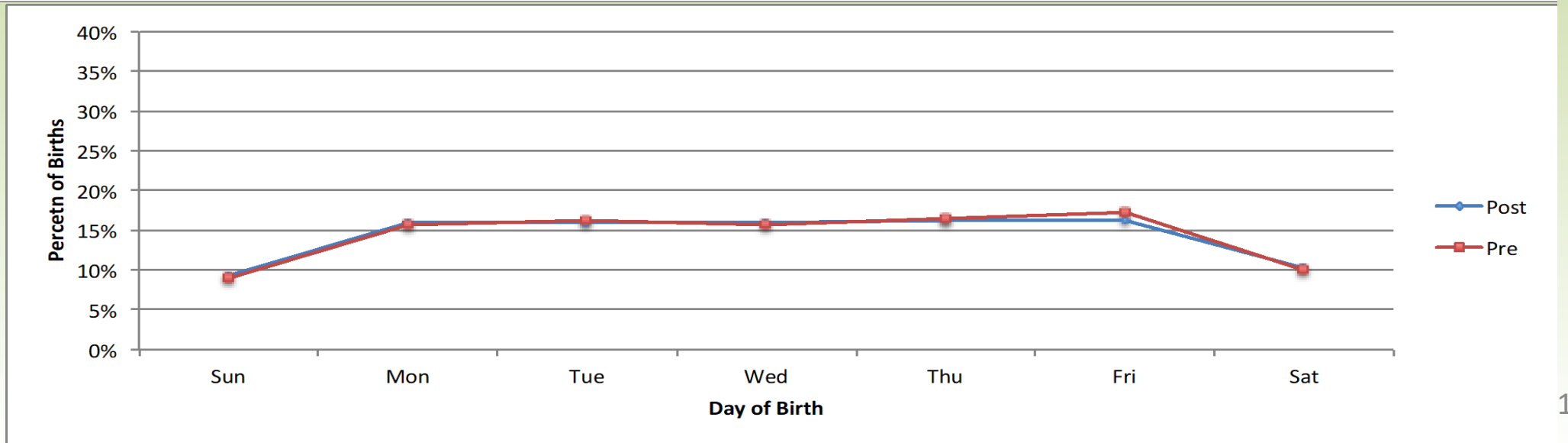
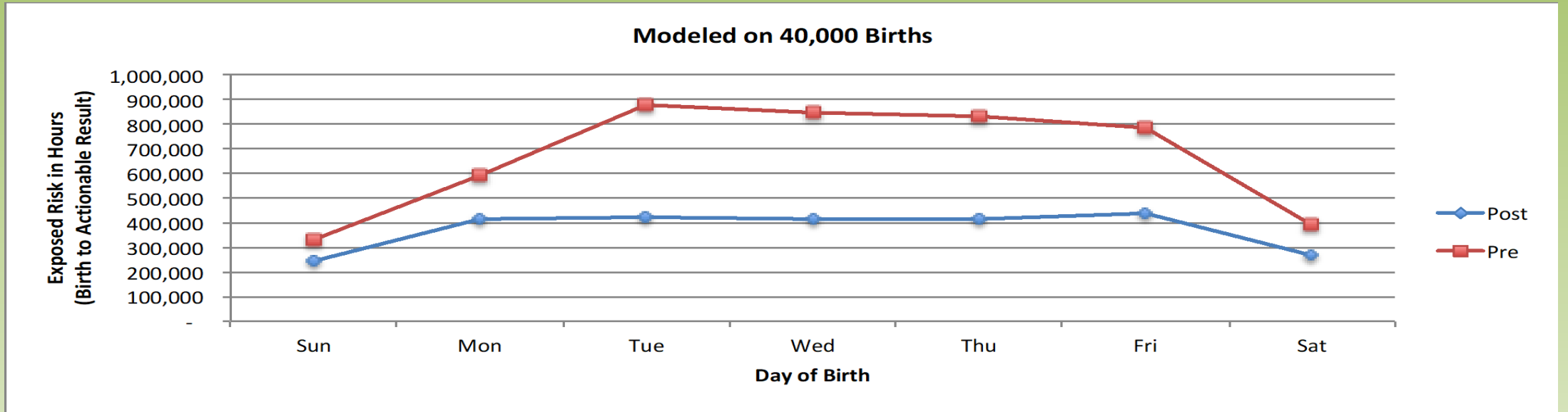


Annual Relative Population Risk

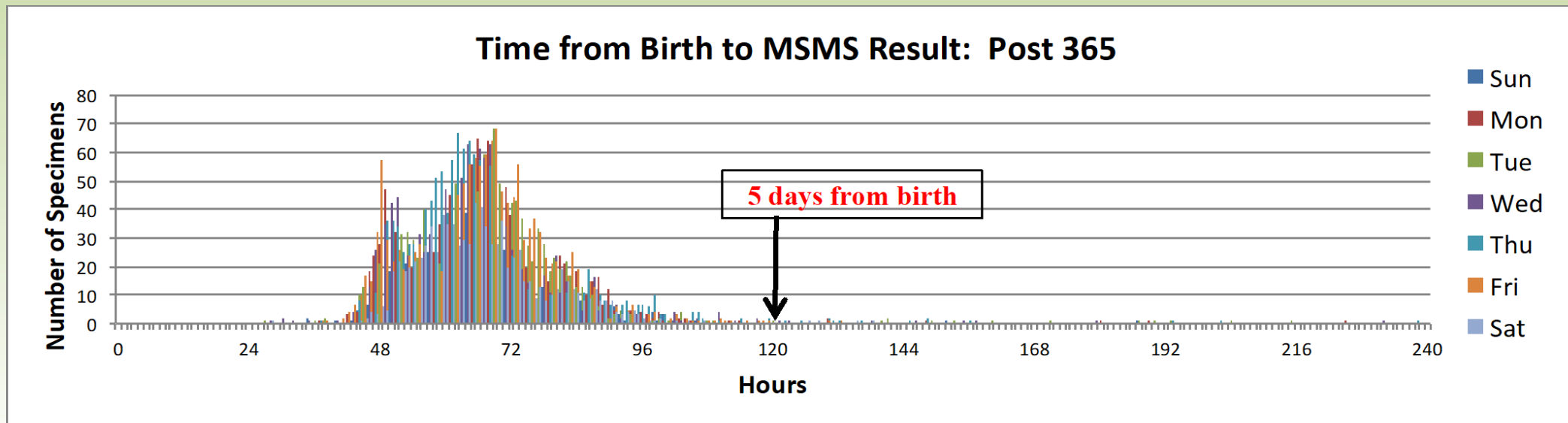
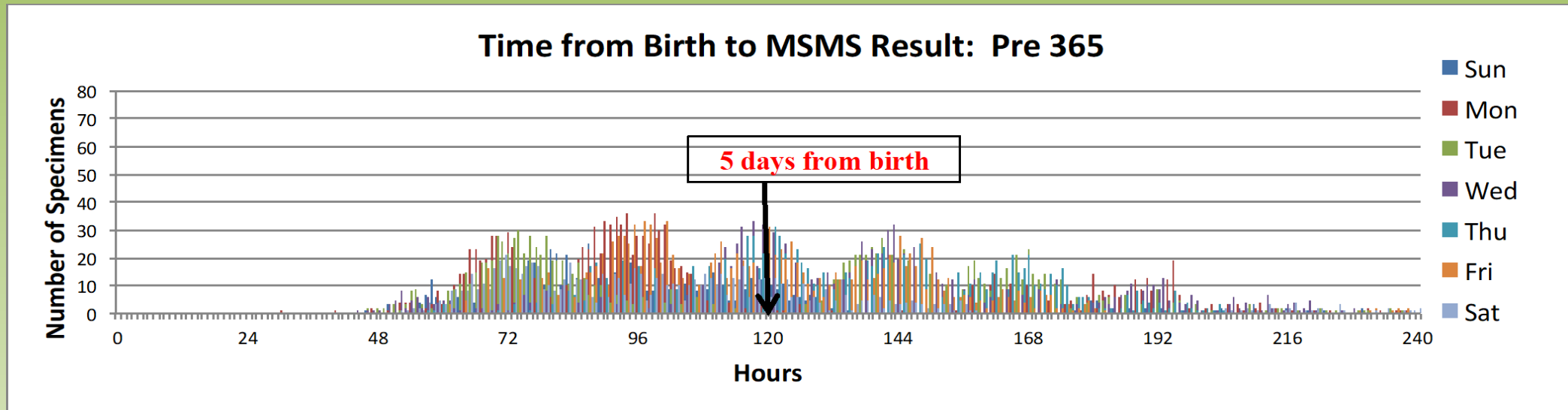
Modeled on 40,000 Births



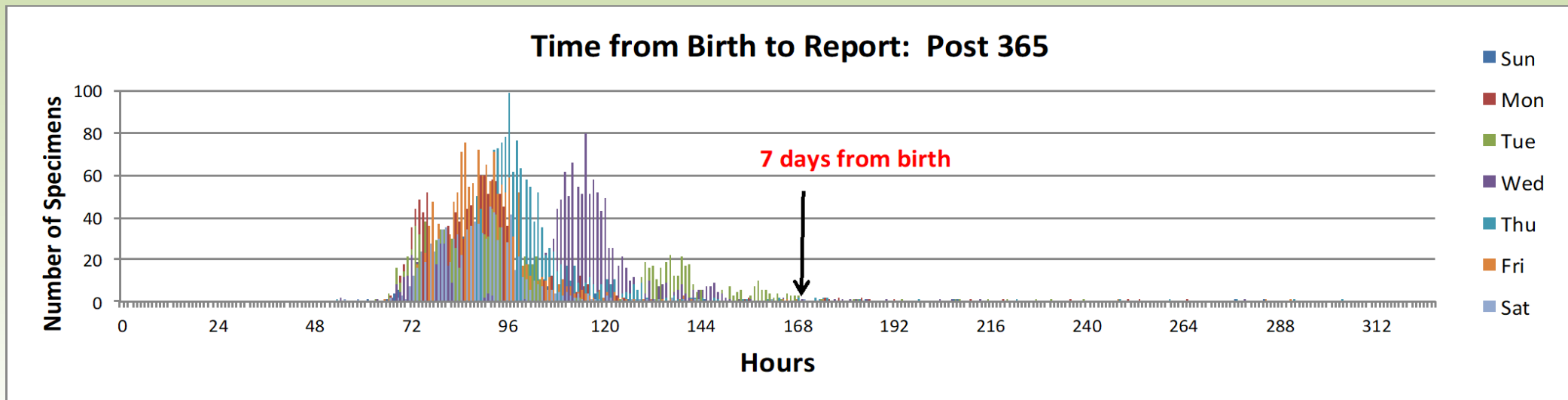
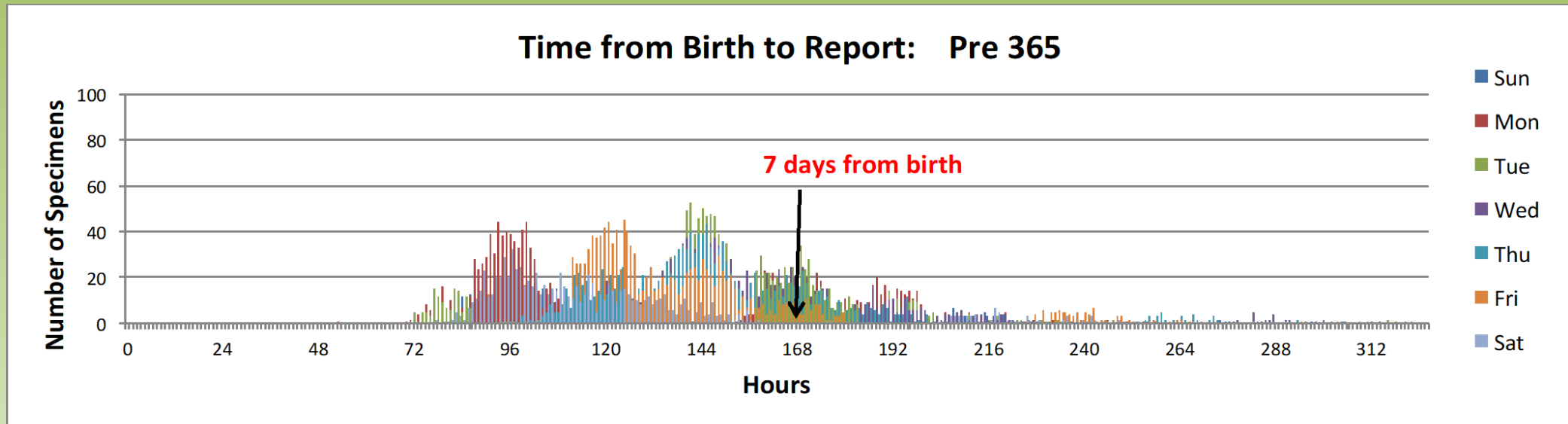
Disparity of Risk Removed



Time Critical Conditions Within 5 Days of Life

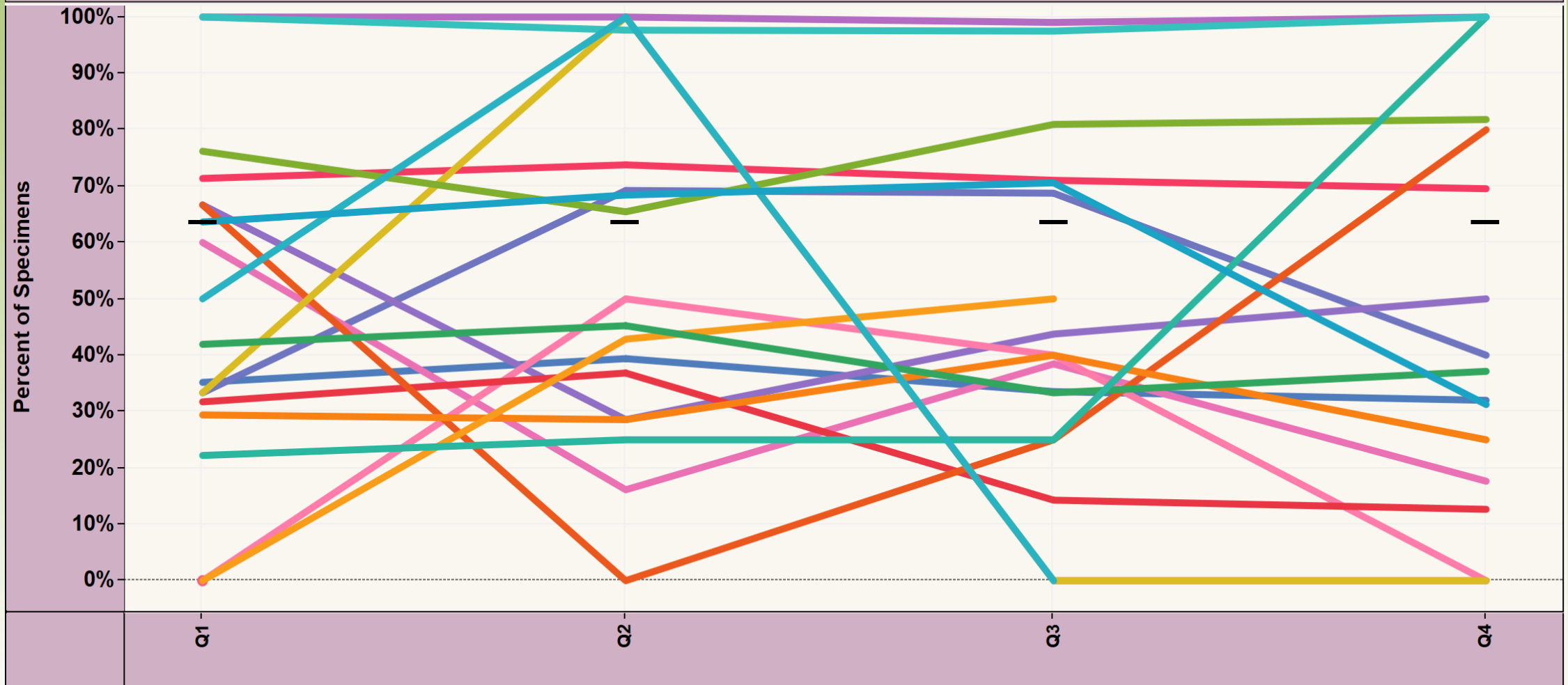


All Results Reported Within 7 Days of Life



2017

NewSTEPS 360 Birth to Reporting Time Critical Results Run Chart
Percent of specimens with time critical results reported on \leq Day 5 after birth



Acknowledgements

- Kimberly Piper, Executive Director, Center for Congenital and Inherited Disorders, Iowa Department of Public Health
- Ron Hardy, Central Delivery Service of Iowa
 - phone: 515-289-9990
 - email: ronh@cdsofiowa.com
- Mike Ramirez, Supervisor NBS lab, State Hygienic Laboratory at The University of Iowa
- Carol Johnson, Supervisor STFU, University of Iowa Hospitals and Clinics



Thank You!

Questions?

Stanton L. Berberich
Program Manager NBS
State Hygienic Laboratory
University of Iowa
phone: 319-335-4500
email: stanton-berberich@uiowa.edu